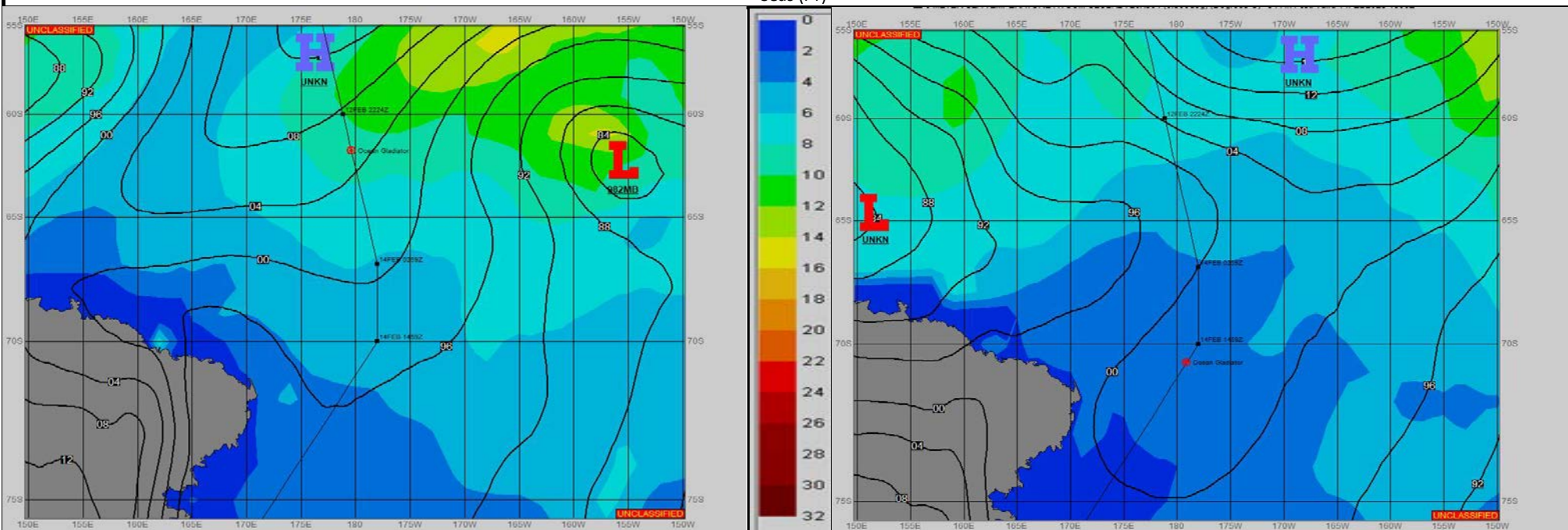


Ref A: MOVREP 07 FEB 2023

Ref B:

SURFACE ANALYSIS 13-Feb-2023 06Z

SURFACE FORECAST 14-Feb-2023 18Z



METSIT 06Z 13-Feb SHIP TRACK ON THE SOUTHWEST END OF TIGHTENED PRESSURE GRADIENT BETWEEN A 1019MB HIGH NEAR 43S 165W, AND A 982MB LOW NEAR 62S 155W. WINDS TO EASE AND SEAS TO FALL AS RIDGE AXIS OFF THE HIGH CENTER MOVES WEST TO EAST ACROSS THE SHIP TRACK.

FORECASTER NOTES

VALID TIME	13-Feb 12Z	13-Feb 18Z	14-Feb 00Z	14-Feb 06Z	14-Feb 12Z	14-Feb 18Z	15-Feb 00Z	15-Feb 06Z
SKY CONDITION	MOSTLY CLOUDY	MOSTLY CLOUDY	MOSTLY CLOUDY	MOSTLY CLOUDY	MOSTLY CLOUDY	PARTLY CLOUDY	PARTLY CLOUDY	PARTLY CLOUDY
WEATHER	NONE	RAIN	NONE	NONE	NONE	NONE	NONE	NONE
VISIBILITY (NM)	UNRESTRICTED	UNRESTRICTED	UNRESTRICTED	UNRESTRICTED	UNRESTRICTED	UNRESTRICTED	UNRESTRICTED	UNRESTRICTED
SFC WINDS (DIR & KTS)	W 15-20	NW 15-20	NW 10-15	N 5	NE 5	VRB 5	NE 10	NW 15-20
SFC MAX/MIN (°C)	2/-1				0/-3			
SST RANGE (°C)	2/0				1/-1			
SEAS (DIR & FT)	SW 6-8	W 5-7	W 4-6	W 3-5	NW 2-4	W 2-4	NW 1-3	NW 2-4
ICE ACCRETION	NIL	NIL	NIL	NIL	LIGHT	LIGHT	LIGHT	LIGHT