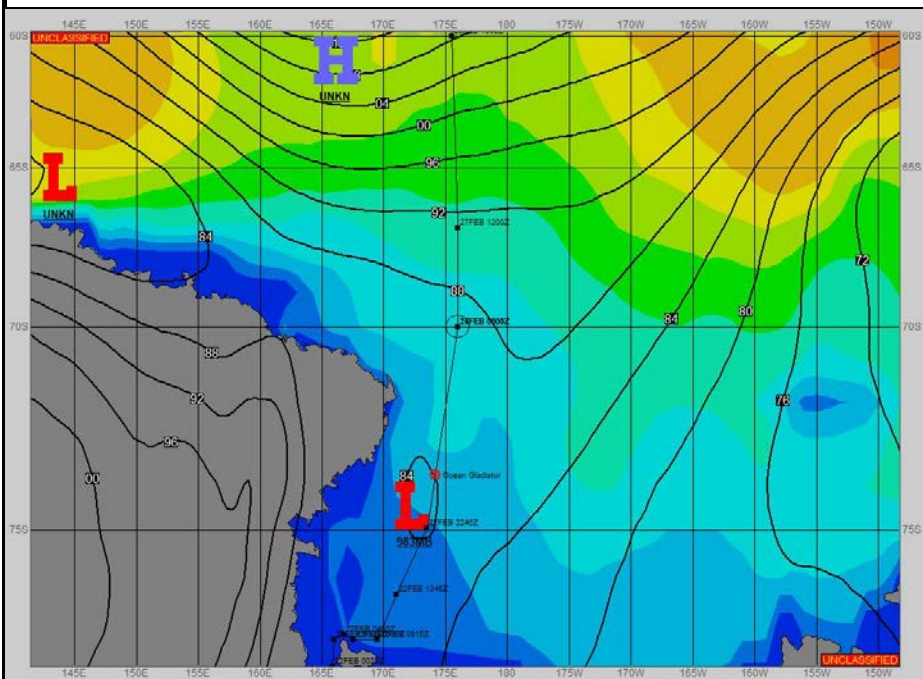
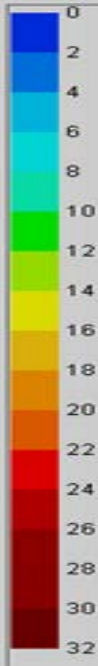


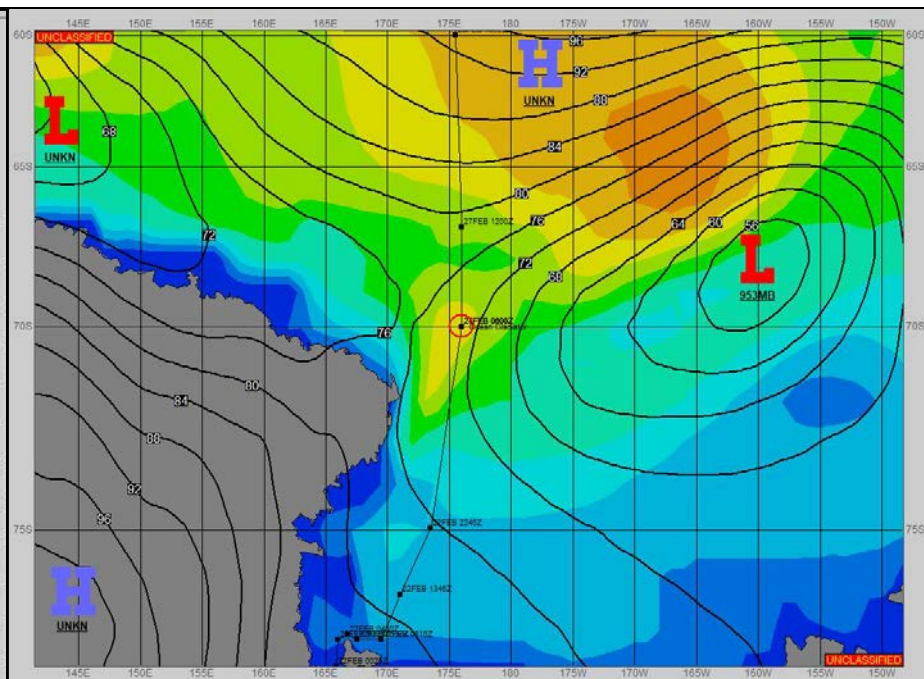
**SURFACE ANALYSIS 23-Feb-2023 06Z**



Seas (FT)



**SURFACE FORECAST 24-Feb-2023 18Z**



**METSIT 06Z 23-Feb** LOW PRESSURE TO MOVE SOUTHEAST ALONG WILKES COAST DEEPENING AND PUSHING WARM FRONTAL WEATHER ACROSS THE SHIP TRACK. BY 24/0000Z, THE LOW WILL HAVE DEEPENED TO 970MB NEAR 70S 175E AND MOVING EAST ALONG 70S. THE LOW WILL CONTINUE TO DEEPEN AS IT MOVES EAST-NORTHEAST. FROM 24/0600Z, THE SHIP POSITION WILL BE ON THE BACK SIDE OF THE LOW WITH INCREASING SOUTHWESTERLY WINDS AND SEAS THROUGH 24/1800Z, DIMINISHING AFTER. EXPECT REDUCED VISIBILITY IN MIXED PRECIPITATION AND FOG AS THE LOW PASSES EAST ACROSS THE SHIP TRACK FROM APPROXIMATELY 23/1800Z THROUGH 24/0900Z.

**FORECASTER NOTES**

VALID TIME	23-Feb 12Z	23-Feb 18Z	24-Feb 00Z	24-Feb 06Z	24-Feb 12Z	24-Feb 18Z	25-Feb 00Z	25-Feb 06Z
SKY CONDITION	CLOUDY	CLOUDY	CLOUDY	CLOUDY	MOSTLY CLOUDY	CLOUDY	CLOUDY	CLOUDY
WEATHER	NONE	MIXED & FOG	MIXED & FOG	MIXED & FOG	NONE	NONE	NONE	NONE
VISIBILITY (NM)	UNRESTRICTED	3 - 5	1 - 3	1 - 3	UNRESTRICTED	UNRESTRICTED	UNRESTRICTED	UNRESTRICTED
SFC WINDS (DIR & KTS)	NW 15-20	N 10	SE 5	S 15-20	SW 30-40	SW 25-30 GUST 40	S 10-15	E 5-10
SFC MAX/MIN (°C)	-1/-4				-1/-3			
SST RANGE (°C)	0/-1				0/-1			
SEAS (DIR & FT)	NNW 4-6	NW 4-6	NW 4-6	NW 5-7	SW 10-13	SW 13-17	SW 10-13	SW 9-12
ICE ACCRETION	LIGHT	LIGHT	LIGHT	LIGHT	LIGHT	LIGHT	LIGHT	LIGHT