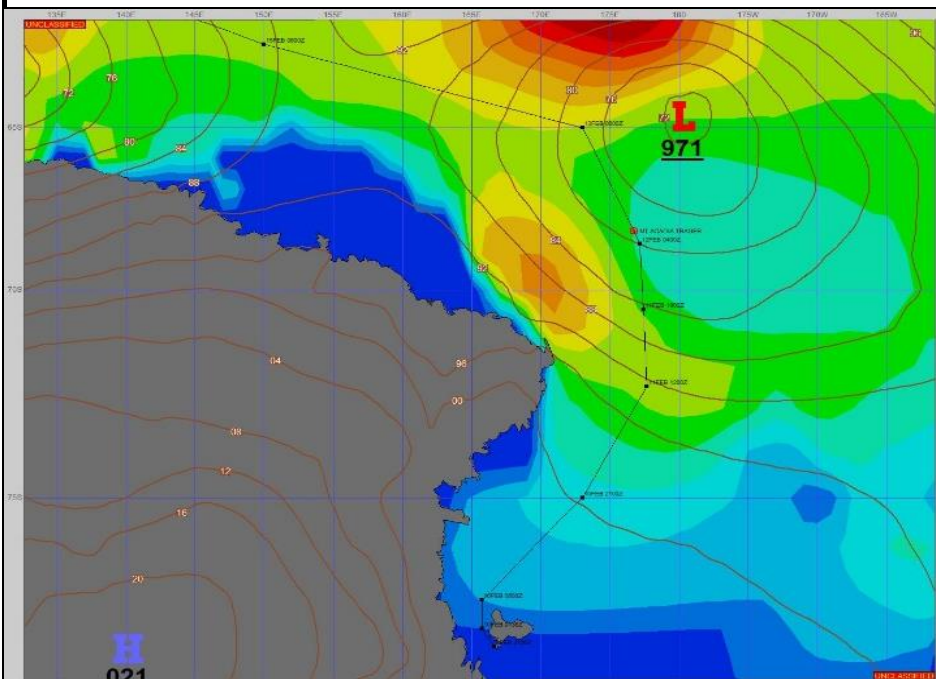


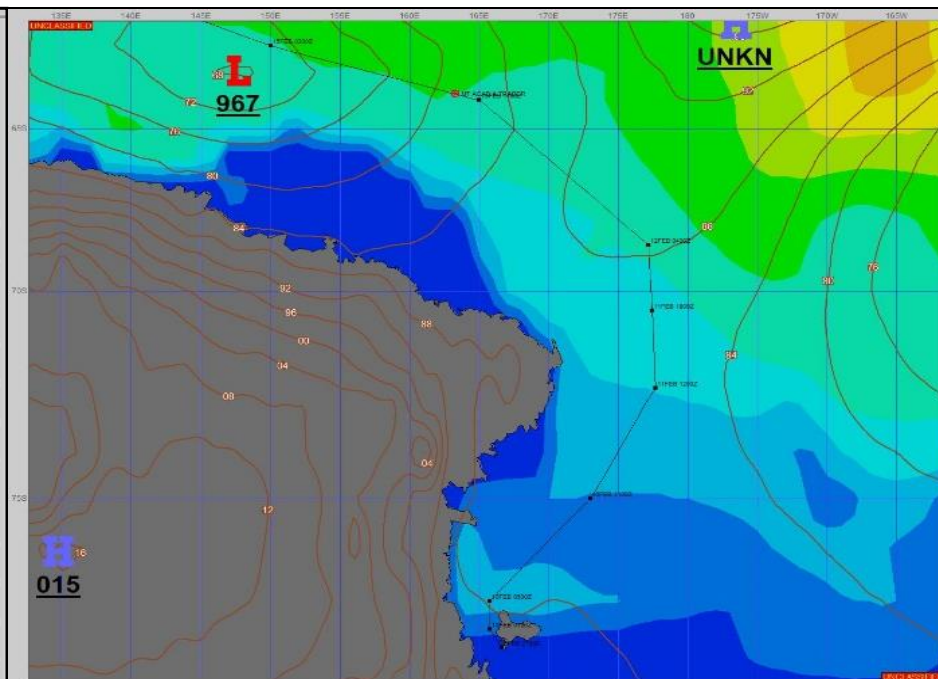
SURFACE ANALYSIS 12-Feb-2024 06Z



Seas (FT)



SURFACE FORECAST 13-Feb-2024 18Z



METSIT 06Z 12-Feb A 971MB LOW OVER THE ROSS SEA NEAR 64°S, 180° IS PRODUCING EXTENSIVE CLOUD COVER AND GUSTY WINDS FOR YOUR POSITION. EXPECT MOSTLY CLOUDY TO CLOUDY SKIES WITH PERIODS OF MIXED PRECIPITATION AND FOG, A FRESH BREEZE AND ROUGH SEAS PEAKING AT 14FT AROUND 12/18Z. THEN BECOMING MODERATE AFTER 13/18Z.

FORECASTER NOTES

VALID TIME	12-Feb 12Z	12-Feb 18z	13-Feb 00Z	13-Feb 06Z	13-Feb 12Z	13-Feb 18Z	14-Feb 00Z	14-Feb 06Z
SKY CONDITION	CLOUDY	CLOUDY	MOSTLY CLOUDY	MOSTLY CLOUDY	MOSTLY CLOUDY	CLOUDY	CLOUDY	CLOUDY
WEATHER	SNOW & FOG	SNOW & FOG	SNOW & FOG	FOG	FOG	FOG	FOG	FOG
VISIBILITY (NM)	<1/2	<1/2	1/2 - 1	1 - 3	1/2 - 1	<1/2	<1/2	<1/2
SFC WINDS (DIR & KTS)	S 10-15 GUST 25	S 15-20 GUST 25	S 10-15 GUST 20	SE 5-10	NE 10-15 GUST 20	N 5-10	NNE 5-10	SSE 10-15
SFC MAX/MIN (°C)	0/-1					1/0		
SST RANGE (°C)	0/-1					1/0		
SEAS (DIR & FT)	S 10-13	S 11-14	SSW 10-13	SSW 9-11	SW 7-10	W 7-10	WNW 7-9	WNW 7-9
ICE ACCRETION	LIGHT	NIL	NIL	NIL	NIL	NIL	NIL	NIL