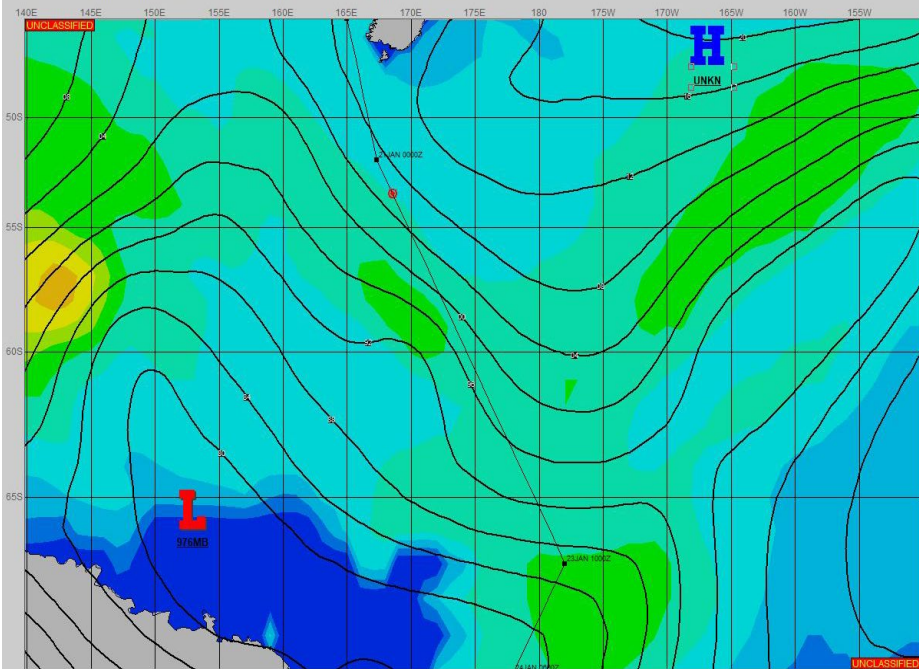


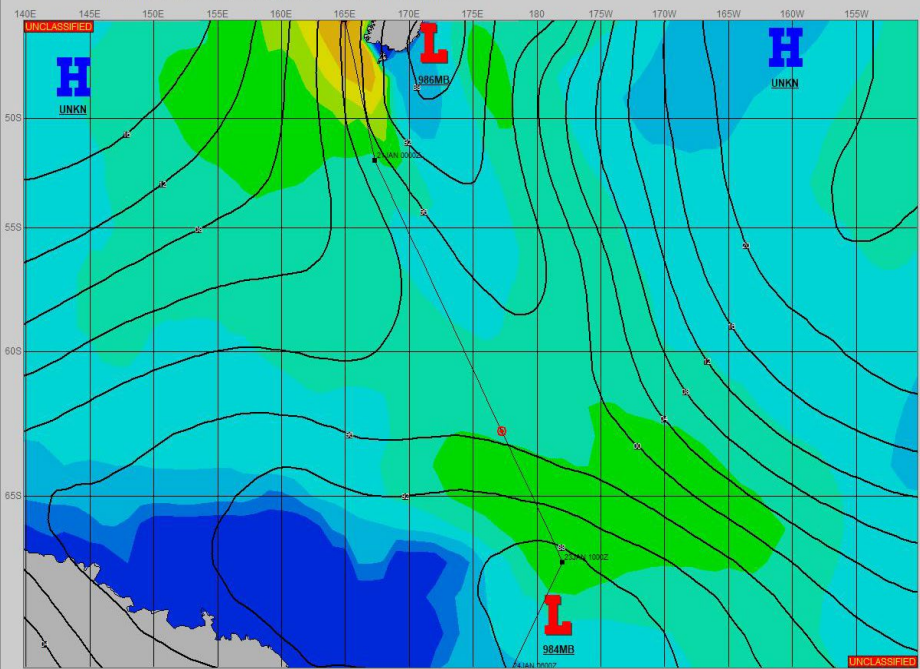
SURFACE ANALYSIS 21-Jan-2024 06Z



Seas (FT)



SURFACE FORECAST 22-Jan-2024 18Z



METSIT 06Z 21-Jan TIGHT PRESSURE GRADIENT BETWEEN HIGH PRESSURE IN THE SOUTH PACIFIC AND 976MB LOW NEAR 66S 154E PRODUCING GALE FORCE FOLLOWING WIND.THE WIND SHOULD EASE FROM 22/0600Z AS A COL AREA DEVELOPS. EXPECT PERIODS OF REDUCED VISIBILITY IN FOG THROUGH 22/1200Z.

FORECASTER NOTES

VALID TIME	21-Jan 12Z	21-Jan 18z	22-Jan 00Z	22-Jan 06Z	22-Jan 12Z	22-Jan 18Z	23-Jan 00Z	23-Jan 06Z
SKY CONDITION	CLOUDY	CLOUDY	CLOUDY	MOSTLY CLOUDY	CLOUDY	CLOUDY	CLOUDY	CLOUDY
WEATHER	FOG	FOG	FOG	FOG	FOG	NONE	NONE	NONE
VISIBILITY (NM)	1 - 3	1 - 3	1 - 3	1 - 3	1 - 3	UNRESTRICTED	UNRESTRICTED	UNRESTRICTED
SFC WINDS (DIR & KTS)	NW 20-25 GUST 35	NW 25-30 GUST 40	NW 20-25 GUST 35	NW 15-20	NW 15-20	W 15-20	W 15-20	W 15-20
SFC MAX/MIN (°C)	9/6				4/0			
SST RANGE (°C)	8/5				4/1			
SEAS (DIR & FT)	NW 9-12	NW 9-12	NW 9-12	NW 9-12	NW 9-12	NW 9-12	NW 9-12	NW 9-12
ICE ACCRETION	NIL	NIL	NIL	NIL	NIL	NIL	NIL	NIL