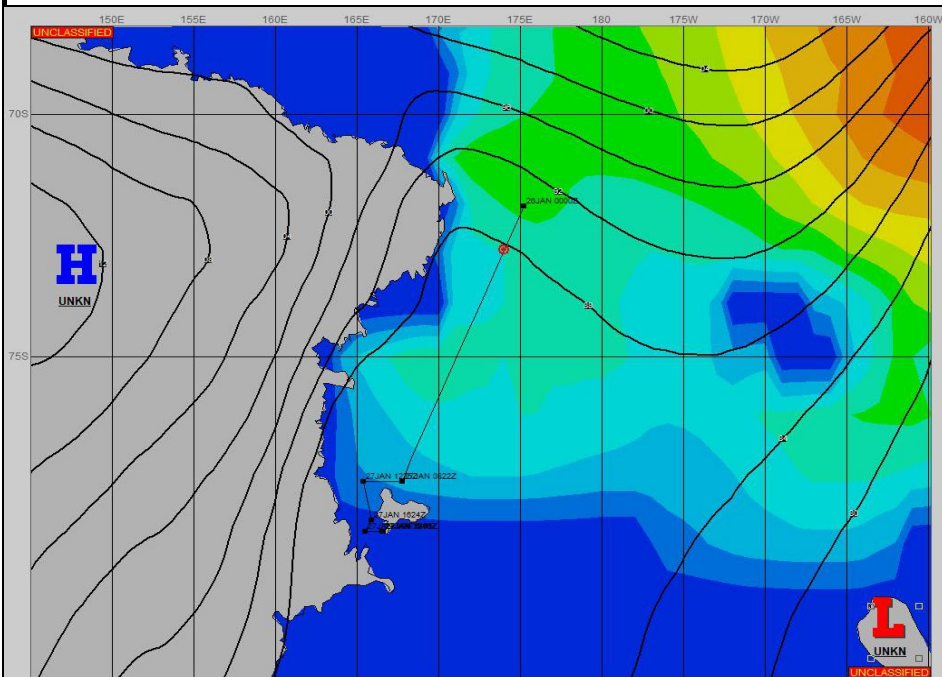
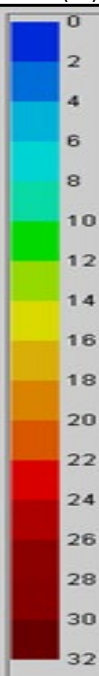


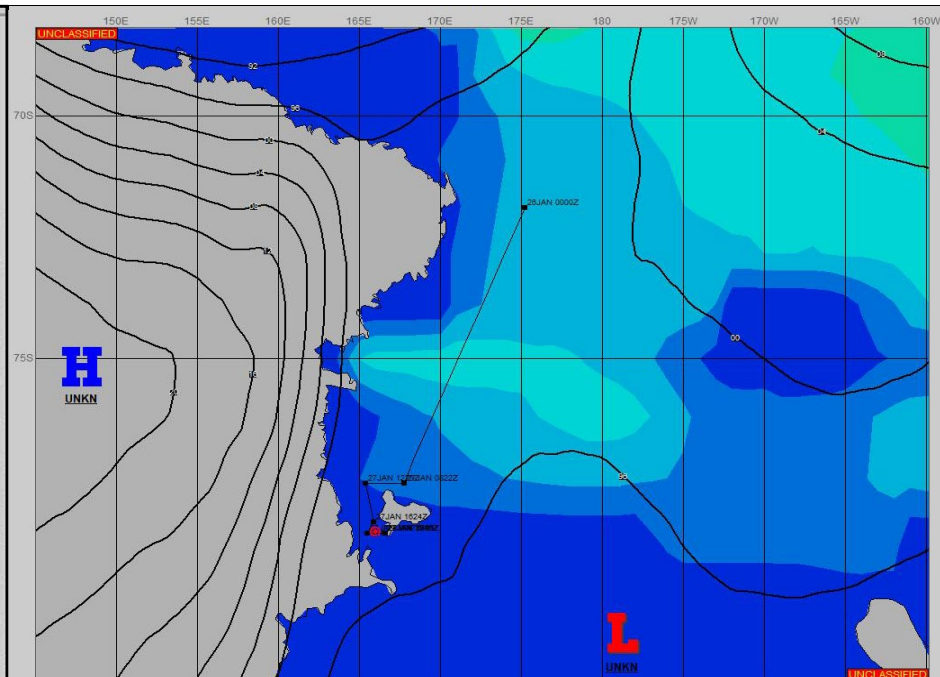
**SURFACE ANALYSIS 26-Jan-2024 06Z**



Seas (FT)



**SURFACE FORECAST 27-Jan-2024 18Z**



**METSIT 06Z 26-Jan** HIGH PRESSURE BUILDING INTO THE EASTERN PLATEAU AND LOW PRESSURE TO THE SOUTHEAST OF ROSS ISLAND CREATING STRONG, DRY OFF-CONTINENT FLOW INTO THE WESTERN ROSS SEA. EXPECT FAIR SKIES WITH UNRESTRICTED VISIBILITY.

**FORECASTER NOTES**

VALID TIME	26-Jan 12Z	26-Jan 18z	27-Jan 00Z	27-Jan 06Z	27-Jan 12Z	27-Jan 18Z	28-Jan 00Z	28-Jan 06Z
SKY CONDITION	CLEAR	CLEAR	PARTLY CLOUDY	PARTLY CLOUDY	PARTLY CLOUDY			
WEATHER	NONE	NONE	NONE	NONE	NONE	MCMURDO CHANNEL	MCMURDO CHANNEL	MCMURDO CHANNEL
VISIBILITY (NM)	UNRESTRICTED	UNRESTRICTED	UNRESTRICTED	UNRESTRICTED	UNRESTRICTED			
SFC WINDS (DIR & KTS)	SE 10	SW 15-20 GUST 25	NW 5-10	W 5	SW 10			
SFC MAX/MIN (°C)	1/0				0/-1			
SST RANGE (°C)	1/0				0/-1			
SEAS (DIR & FT)	E 5-7	N 4-6	N 3-5	NE 1-3	NE 1-3			
ICE ACCRETION	NIL	NIL	NIL	NIL	NIL			