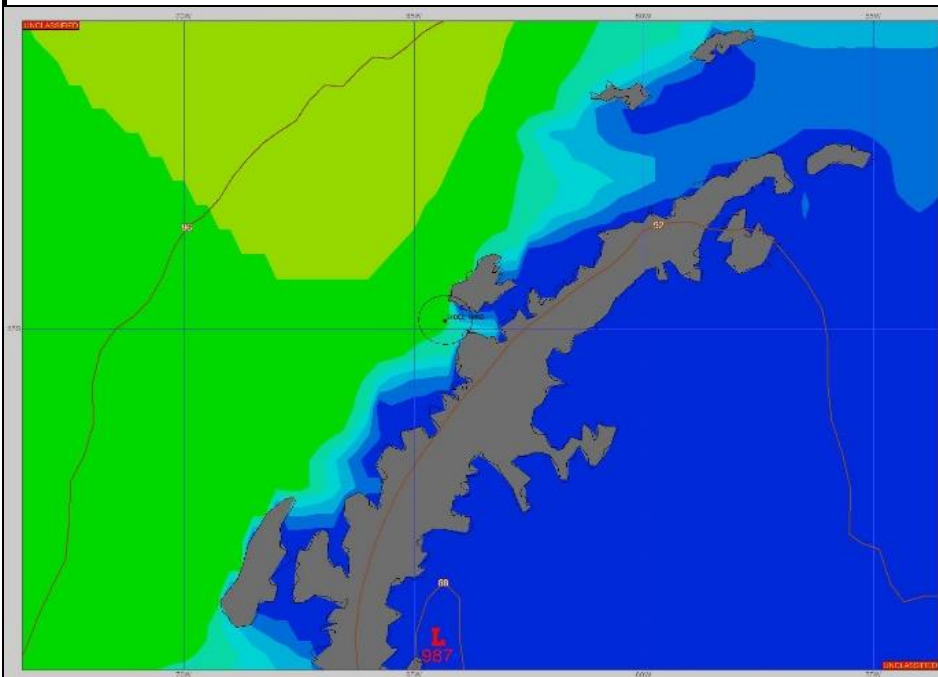


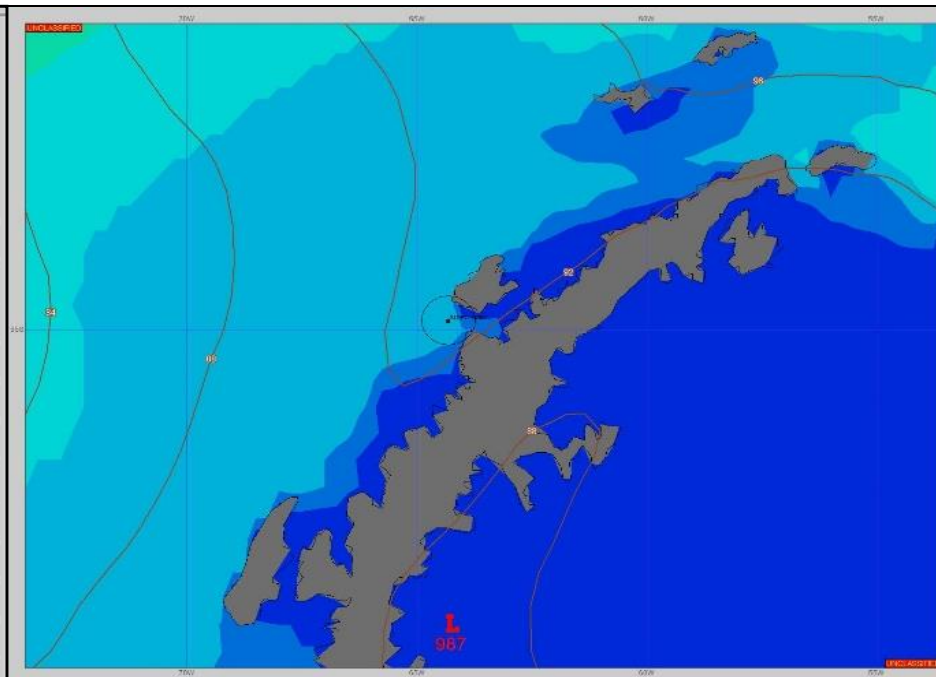
**SURFACE ANALYSIS 1-Jan-2024 06Z**



Seas (FT)



**SURFACE FORECAST 2-Jan-2024 18Z**



**METSIT 06Z 1-Jan** A WEAK FRONTAL BOUNDARY CONTINUES TO LAY ALONG THE ANTARCTIC PENINSULA PRODUCING EXTENSIVE CLOUD COVER OVER ANVERS ISLAND. EXPECT FOG AND INTERMITTENT PERIODS OF LIGHT RAIN THROUGH THE NEXT FEW DAYS.

**FORECASTER NOTES** Winds and seas may differ from those forecast due to vicinity of Anvers Island.

VALID TIME	1-Jan 12Z	1-Jan 18z	2-Jan 00Z	2-Jan 06Z	2-Jan 12Z	2-Jan 18Z	3-Jan 00Z	3-Jan 06Z
SKY CONDITION	MOSTLY CLOUDY	MOSTLY CLOUDY	MOSTLY CLOUDY	PARTLY CLOUDY	PARTLY CLOUDY	CLOUDY	CLOUDY	MOSTLY CLOUDY
WEATHER	FOG	RAIN & FOG	RAIN & FOG	FOG	FOG	RAIN & FOG	RAIN & FOG	RAIN & FOG
VISIBILITY (NM)	1 - 3	1/2 - 1	1/2 - 1	1/2 - 1	1/2 - 1	<1/2	1/2 - 1	1/2 - 1
SFC WINDS (DIR & KTS)	WSW 5-10	WSW 5-10	WSW 5-10	WSW 5-10	VRB 0-5	NE 5-10	NE 10-15	ENE 15-20
SFC MAX/MIN (°C)	2/-1				2/-1			
SST RANGE (°C)	2/0				2/0			
SEAS (DIR & FT)	WNW 7-9	W 6-8	W 5-7	W 4-6	W 3-5	W 2-4	WNW 2-4	NW 2-4
ICE ACCRETION	NIL	NIL	NIL	NIL	NIL	NIL	NIL	NIL