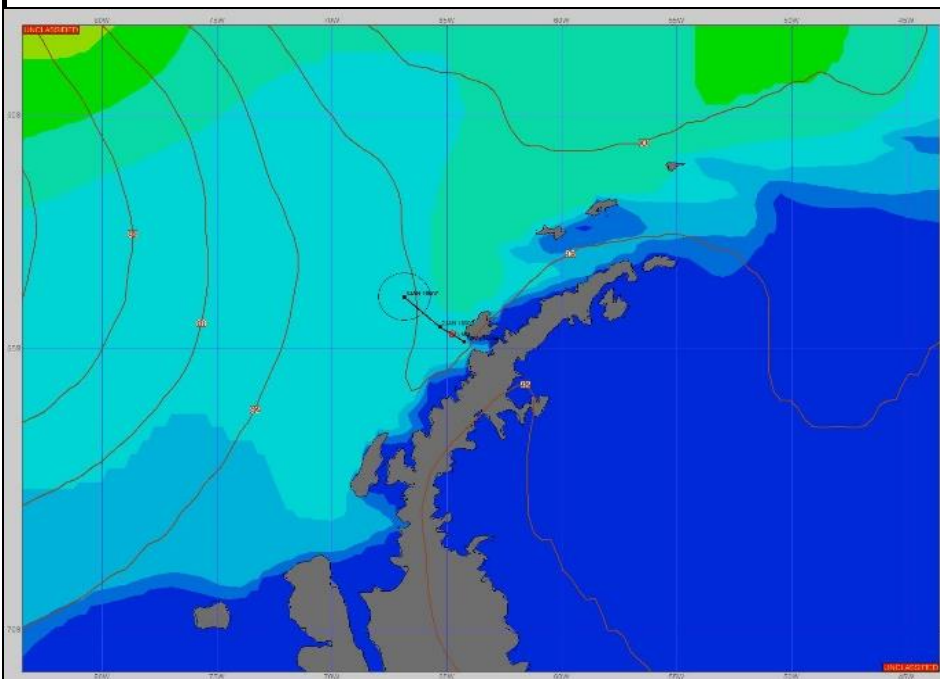


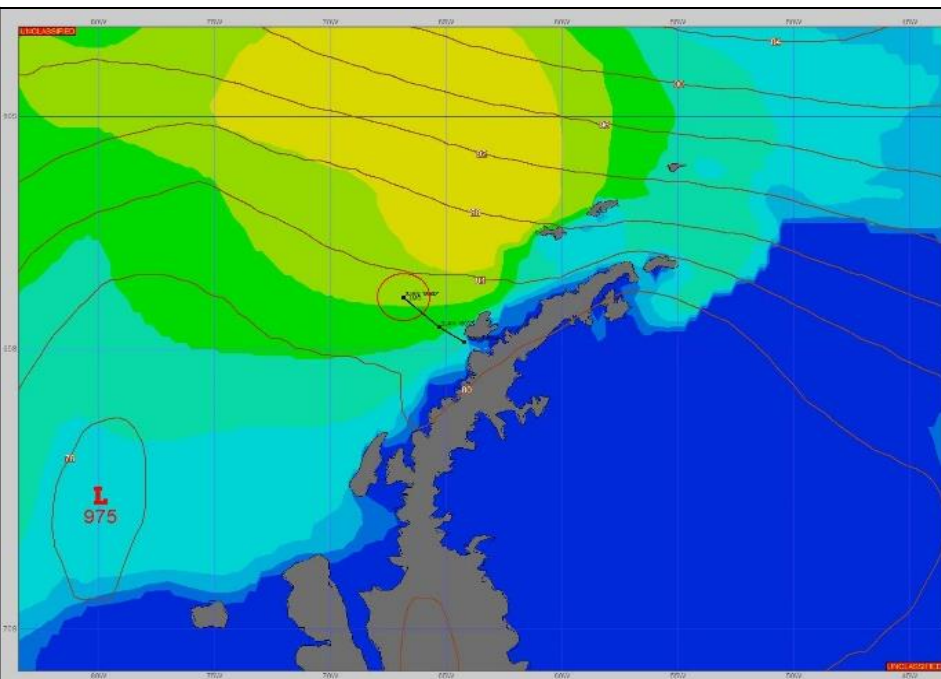
SURFACE ANALYSIS 2-Jan-2024 06Z



Seas (FT)



SURFACE FORECAST 3-Jan-2024 18Z



METSIT 06Z 2-Jan A WEAK RIDGE OF HIGH PRESSURE EXTENDS OVER YOUR TRACK FROM THE NORTH WITH A DEEP (971MB) LOW PRESSURE SYSTEM MIGRATING THROUGH THE BELLINGSHAUSEN SEA TOWARD THE ANTARCTIC PENINSULA. EXPECT FOG WITH INTERMITTENT PERIODS OF LIGHT RAIN, A GENTLE TO MODERATE BREEZE AND MODERATE SEAS BUILDING TO ROUGH THROUGH THE NEXT FEW DAYS.

FORECASTER NOTES

VALID TIME	2-Jan 12Z	2-Jan 18z	3-Jan 00Z	3-Jan 06Z	3-Jan 12Z	3-Jan 18Z	4-Jan 00Z	4-Jan 06Z
SKY CONDITION	CLOUDY	CLOUDY	CLOUDY	MOSTLY CLOUDY	CLOUDY	MOSTLY CLOUDY	MOSTLY CLOUDY	CLOUDY
WEATHER	FOG	FOG	RAIN & FOG	RAIN & FOG	RAIN & FOG	RAIN & FOG	FOG	RAIN & FOG
VISIBILITY (NM)	2 - 4	1/2 - 1	1/2 - 1	<1/2	1/2 - 1	1 - 3	1/2 - 1	<1/2
SFC WINDS (DIR & KTS)	NNE 5-10	NE 10-15 GUST 20	N 10-15	NNW 10-15 GUST 20	W 5-10	WNW 10-15 GUST 20	NW 5-10	NW 5-10
SFC MAX/MIN (°C)	2/0			2/1				
SST RANGE (°C)	1/1			1/1				
SEAS (DIR & FT)	W 4-6	WNW 4-6	WNW 3-5	NW 4-6	NW 7-9	NW 7-10	NW 8-11	WNW 7-10
ICE ACCRETION	NIL	NIL	NIL	NIL	NIL	NIL	NIL	NIL