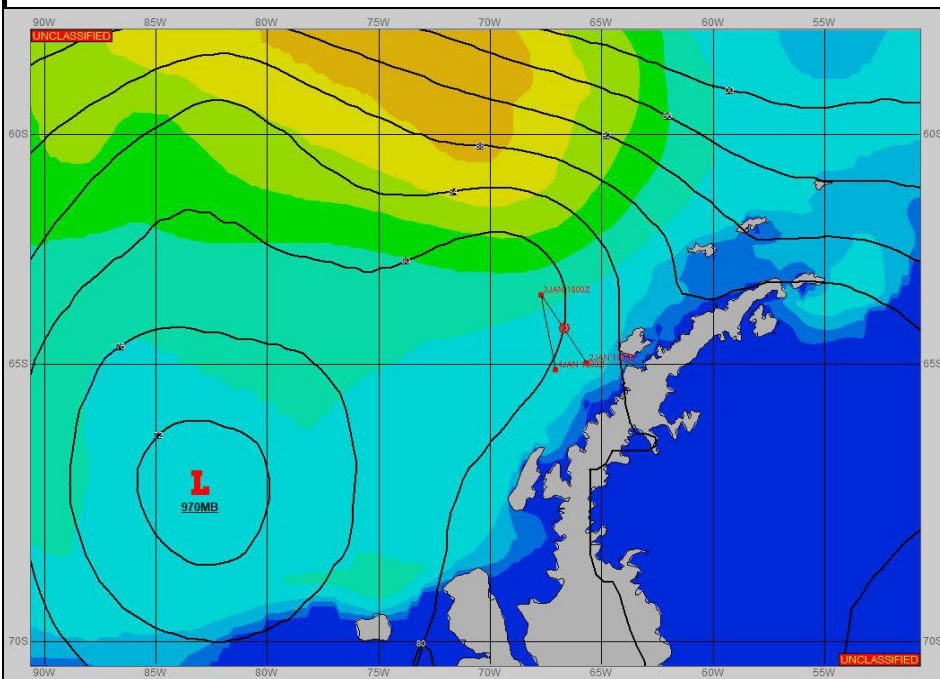
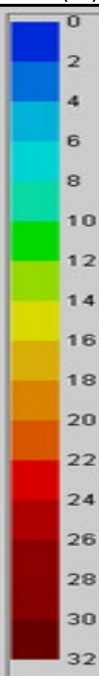


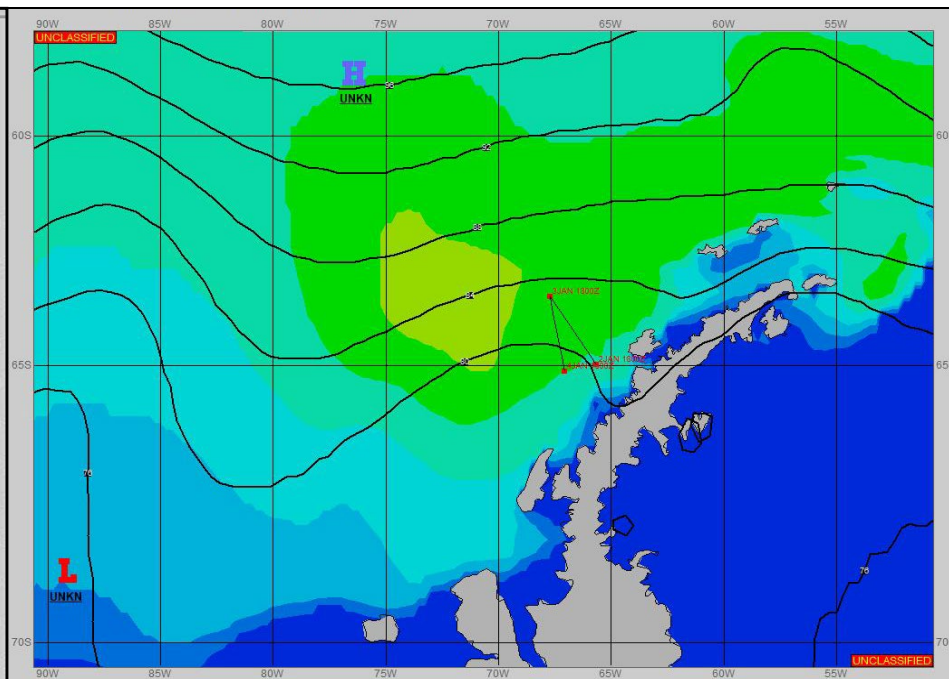
SURFACE ANALYSIS 3-Jan-2024 06Z



Seas (FT)



SURFACE FORECAST 4-Jan-2024 18Z



METSIT 06Z 3-Jan A 970MB LOW NEAR 67S 083W WILL FILL AND MOVE EAST WITH A TRANSIENT RIDGE OF HIGH PRESSURE BUILDING IN FROM THE WEST. EXPECT FRESH TO MODERATE WINDS WITH REDUCED VISIBILITY IN PRECIPITATION AND FOG FOR THE FORECAST PERIOD.

FORECASTER NOTES

VALID TIME	3-Jan 12Z	3-Jan 18z	4-Jan 00Z	4-Jan 06Z	4-Jan 12Z	4-Jan 18Z	5-Jan 00Z	5-Jan 06Z
SKY CONDITION	CLOUDY	CLOUDY	CLOUDY	CLOUDY	CLOUDY	CLOUDY	CLOUDY	CLOUDY
WEATHER	RAIN & FOG	RAIN & FOG	RAIN & FOG	RAIN & FOG	RAIN & FOG	FOG	FOG	FOG
VISIBILITY (NM)	1 - 3	1 - 3	1 - 3	1 - 3	1 - 3	2 - 4	2 - 4	2 - 4
SFC WINDS (DIR & KTS)	NW 20-25 GUST 30	NW 10-15	NW 10-15 GUST 20	NW 20-25 GUST 30	NW 15-20 GUST 25	NW 15-20 GUST 25	W 15-20 GUST 25	W 15-20 GUST 25
SFC MAX/MIN (°C)	3/1				2/0			
SST RANGE (°C)	2/1				2/1			
SEAS (DIR & FT)	NW 8-10	NW 9-12	NW 9-12	NW 9-12	NW 8-10	NW 8-10	NW 9-12	NW 8-10
ICE ACCRETION	NIL	NIL	NIL	NIL	NIL	NIL	NIL	NIL