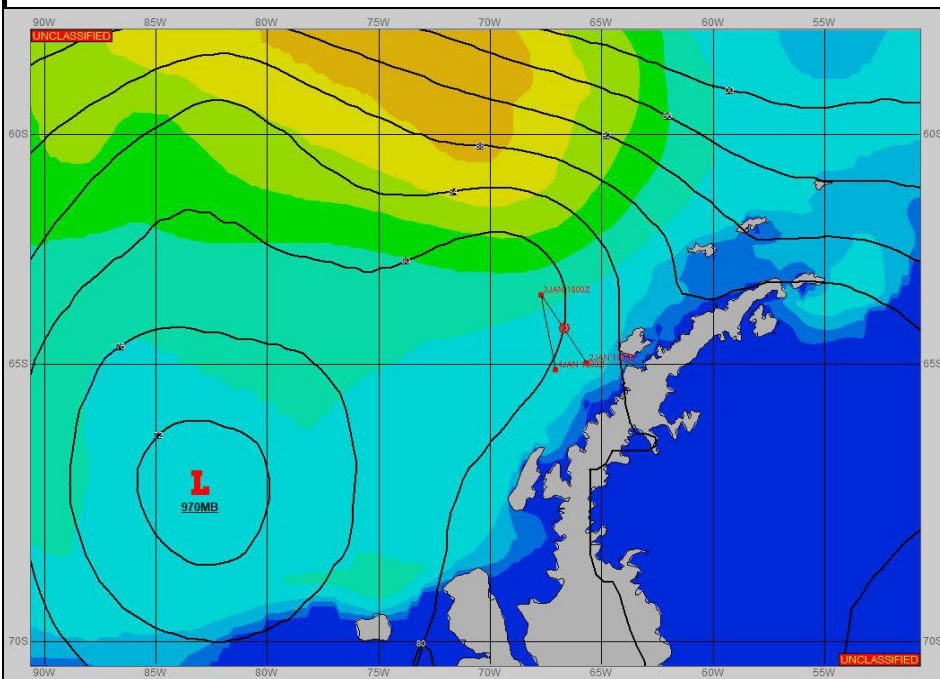
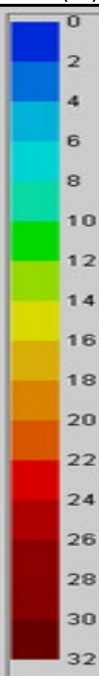


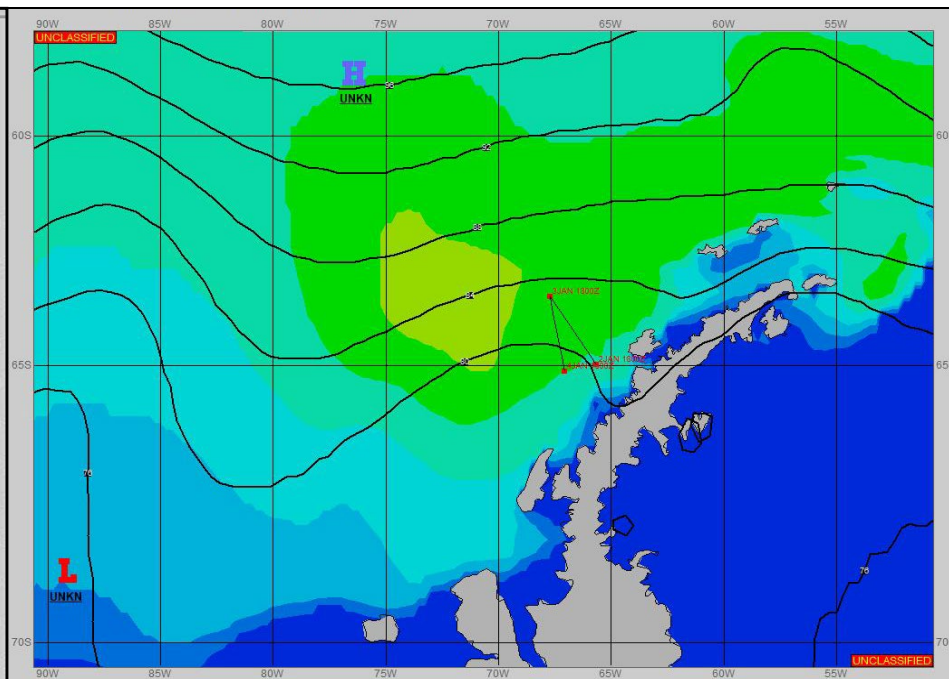
SURFACE ANALYSIS 4-Jan-2024 06Z



Seas (FT)



SURFACE FORECAST 5-Jan-2024 18Z



METSIT 06Z 4-Jan

FILLING 973MB NEAR 62S 075W TO MOVE EAST-SOUTHEAST INTO THE WEDDELL SEA. TRANSIENT RIDGE OF HIGH PRESSURE TO MOVE EAST ACROSS SHIP TRACK FROM APPROXIMATELY 04/2100Z THROUGH 05/0900Z EASING WINDS AND BREAKING THE SKIES. FROM 05/0900Z, FRESH WINDS FROM THE WEST-NORTHWEST WILL SET UP BETWEEN LOW PRESSURE TO THE SOUTHWEST AND HIGH PRESSURE TO THE NORTH. EXPECT VARIABLE VISIBILITY IN FOG AND LIGHT PRECIPITATION FOR THE FORECAST PERIOD.

FORECASTER NOTES

VALID TIME	4-Jan 12Z	4-Jan 18z	5-Jan 00Z	5-Jan 06Z	5-Jan 12Z	5-Jan 18Z	6-Jan 00Z	6-Jan 06Z
SKY CONDITION	CLOUDY	CLOUDY	MOSTLY CLOUDY	CLOUDY	CLOUDY	CLOUDY	CLOUDY	CLOUDY
WEATHER	RAIN & FOG	RAIN & FOG	NONE	RAIN & FOG	FOG	RAIN & FOG	FOG	FOG
VISIBILITY (NM)	1 - 3	1 - 3	UNRESTRICTED	1 - 3	<1/2	1/2 - 1	1 - 3	1 - 3
SFC WINDS (DIR & KTS)	NW 10-15	NE 10-15	SW 5	W 5-10	NW 10-15	NW 10-15	W 15-20	W 15-20
SFC MAX/MIN (°C)	2/0				3/1			
SST RANGE (°C)	1/0				1/0			
SEAS (DIR & FT)	NW 8-10	NW 6-8	NW 7-9	NW 6-8	NW 5-7	NW 5-7	NW 5-7	NW 5-7
ICE ACCRETION	NIL	NIL	NIL	NIL	NIL	NIL	NIL	NIL