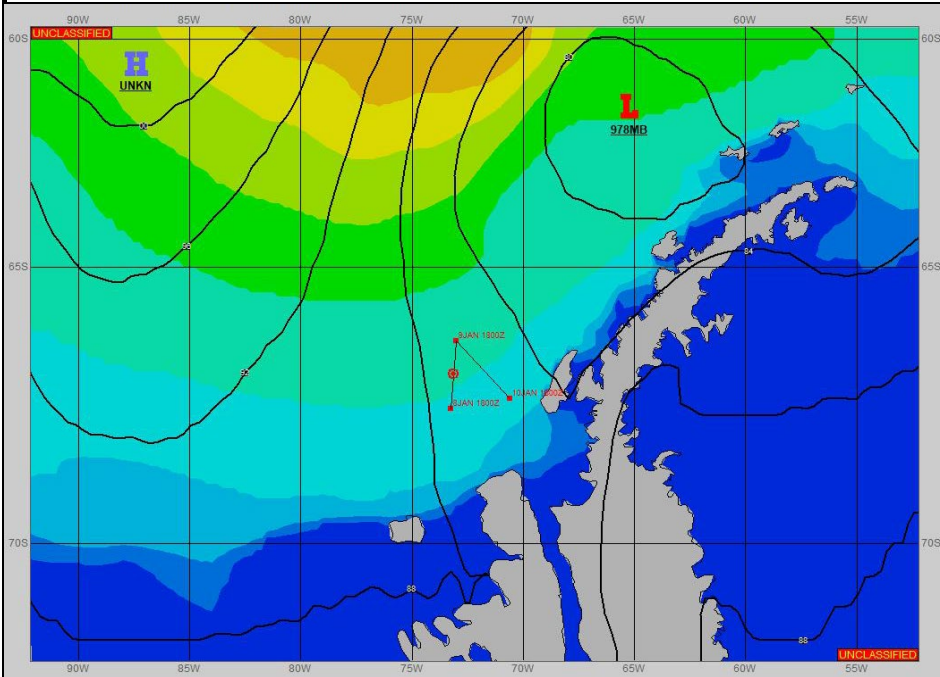
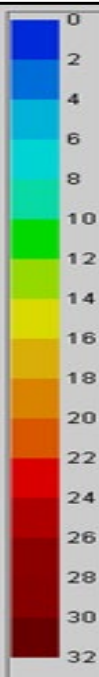


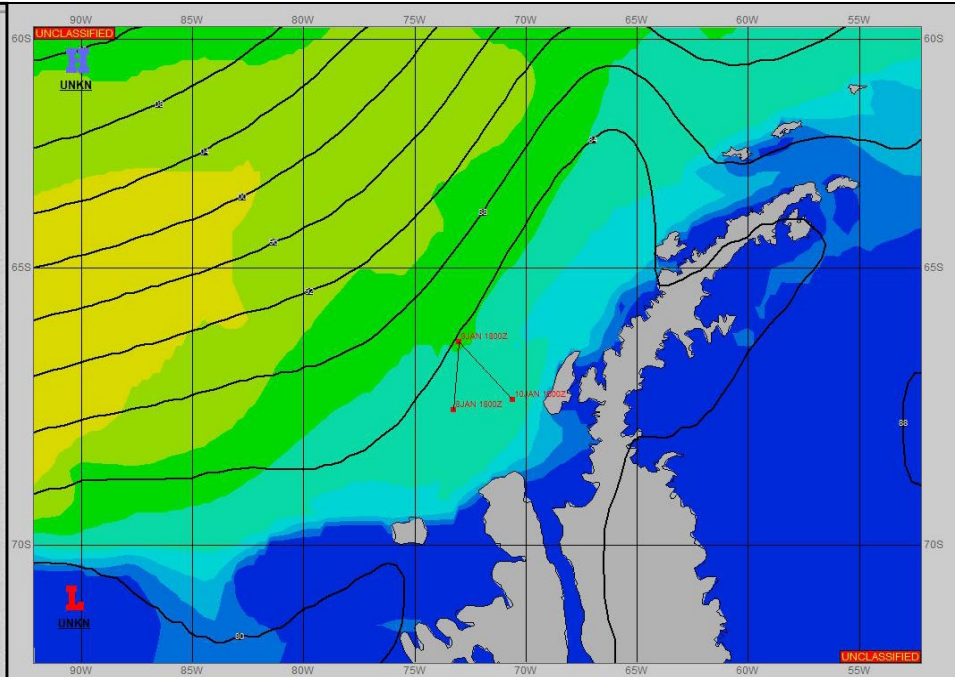
**SURFACE ANALYSIS 9-Jan-2024 06Z**



Seas (FT)



**SURFACE FORECAST 10-Jan-2024 18Z**



**METSIT 06Z 9-Jan** 978MB LOW NEAR 62S 65W MOVES EAST AND A RIDGE OF HIGH PRESSURE MOVES INTO THE OPERATIONS AREA FROM 09/1200Z THROUGH 10/0300Z. A FRONTAL BOUNDARY OFF LOW PRESSURE TO THE SOUTHWEST IN THE BELLINGSHAUSEN SEA WILL BEGIN TO EFFECT THE OPERATIONS AREA FROM 10/0600Z. EXPECT PRECIPITATION TO BEGIN BY 10/0900Z WITH LIKELY GALE FORCE WIND FROM THE NORTHEAST BY 10/1200Z. VISIBILITY MAY BE REDUCED TO NEAR ZERO WITH FRONTAL PASSAGE NEAR 10/1200Z. REMNANTS OF THE FRONTAL BOUNDARY MAY LINGER THROUGH THE END OF THE FORECAST PERIOD WITH INTERMITTENT LIGHT PRECIPITATION.

**FORECASTER NOTES**

VALID TIME	9-Jan 12Z	9-Jan 18z	10-Jan 00Z	10-Jan 06Z	10-Jan 12Z	10-Jan 18Z	11-Jan 00Z	11-Jan 06Z
SKY CONDITION	MOSTLY CLOUDY	CLOUDY	CLOUDY	CLOUDY	CLOUDY	CLOUDY	CLOUDY	MOSTLY CLOUDY
WEATHER	FOG	FOG	FOG	FOG	SNOW & FOG	SNOW & FOG	FOG	FOG
VISIBILITY (NM)	1 - 3	1 - 3	1 - 3	1 - 3	<1/2	1/2 - 1	2 - 4	3 - 5
SFC WINDS (DIR & KTS)	SW 20-25 GUST 30	SW 15-20	W 10-15	NW 15-20 GUST 25	NE 25-30 GUST 40	NE 25-30 GUST 40	SW 20-25	SW 15-20 GUST 25
SFC MAX/MIN (°C)	1/-1			1/-1				
SST RANGE (°C)	1/0			1/0				
SEAS (DIR & FT)	W 7-9	W 7-9	W 5-7	W 4-6	NW 5-7	NW 7-9	W 7-9	W 7-9
ICE ACCRETION	NIL	NIL	NIL	NIL	NIL	NIL	NIL	NIL