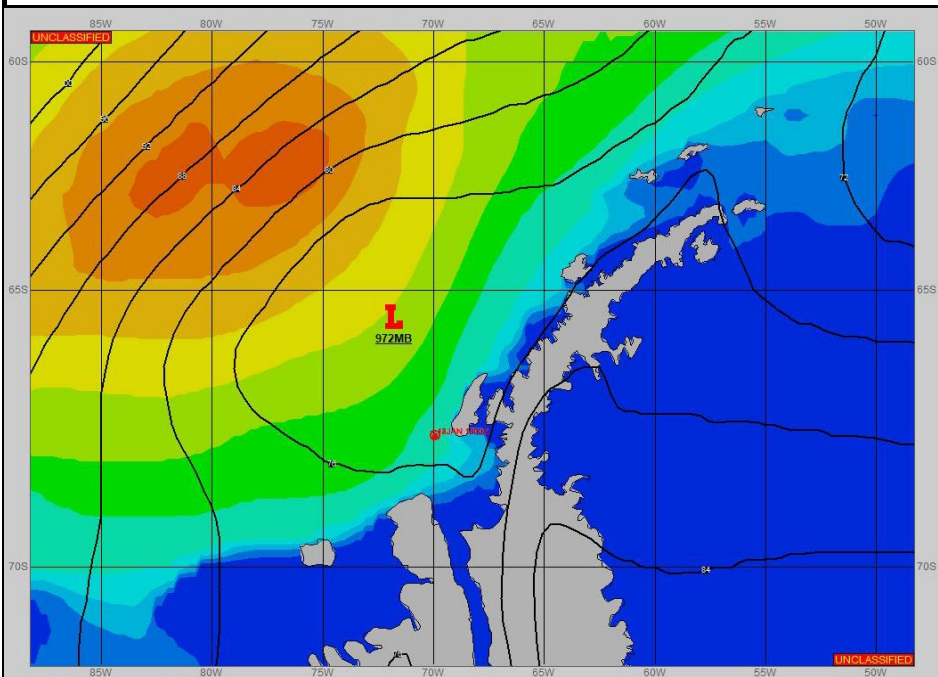
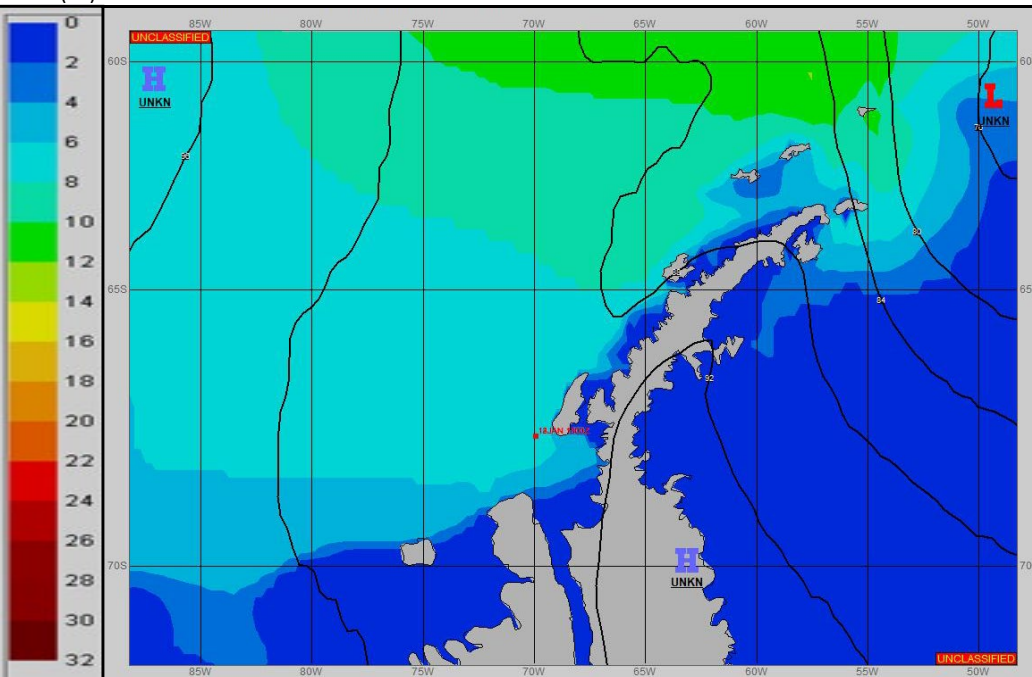


**SURFACE ANALYSIS 13-Jan-2024 06Z**



Seas (FT)

**SURFACE FORECAST 14-Jan-2024 18Z**



**METSIT 06Z 13-Jan** 972MB LOW NEAR 66S 072W IS FILLING AND MOVING NORTHEAST. EXPECT MILD CONDITIONS UNDER VARIABLE CLOUDS, UNRESTRICTED VISIBILITY, AND LIGHT EAST-SOUTHEAST WINDS.

**FORECASTER NOTES** WINDS AND SEAS MAY DIFFER FROM THOSE FORECAST DUE TO FUNNELING/SHELTERING EFFECTS OF ISLANDS.

VALID TIME	13-Jan 12Z	13-Jan 18z	14-Jan 00Z	14-Jan 06Z	14-Jan 12Z	14-Jan 18Z	15-Jan 00Z	15-Jan 06Z
SKY CONDITION	MOSTLY CLOUDY	MOSTLY CLOUDY	PARTLY CLOUDY	CLOUDY	MOSTLY CLOUDY	PARTLY CLOUDY	PARTLY CLOUDY	PARTLY CLOUDY
WEATHER	NONE	NONE	NONE	NONE	NONE	NONE	NONE	NONE
VISIBILITY (NM)	UNRESTRICTED	UNRESTRICTED	UNRESTRICTED	UNRESTRICTED	UNRESTRICTED	UNRESTRICTED	UNRESTRICTED	UNRESTRICTED
SFC WINDS (DIR & KTS)	SE 5-10	E 5-10	SE 5-10	E 5-10	NE 5-10	NE 5-10	SE 5-10	SE 5-10
SFC MAX/MIN (°C)	3/0				2/-1			
SST RANGE (°C)	1/0				1/0			
SEAS (DIR & FT)	W 8-10	W 8-10	W 7-9	W 6-8	W 5-7	W 5-7	W 4-6	W 3-5
ICE ACCRETION	NIL	NIL	NIL	NIL	NIL	NIL	NIL	NIL