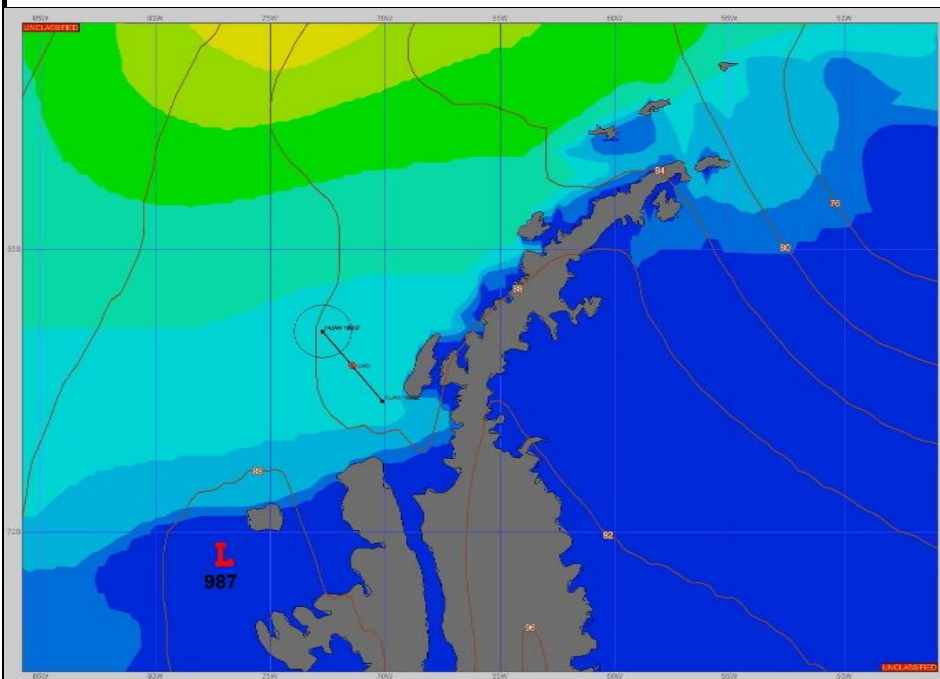


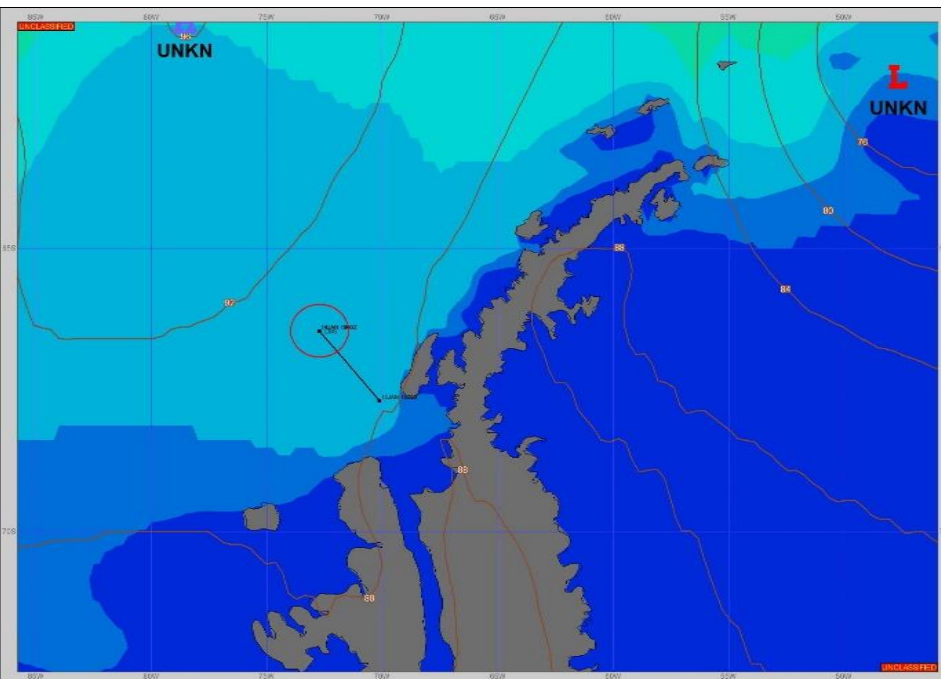
**SURFACE ANALYSIS 14-Jan-2024 06Z**



Seas (FT)



**SURFACE FORECAST 15-Jan-2024 18Z**



**METSIT 06Z 14-Jan** A WEAK 972MB LOW NEAR 70°S 077°W IS PRODUCING EXTENSIVE CLOUD COVER AS IT MOVES NORTHEAST. EXPECT PERIODS OF FOG, A GENTLE BREEZE AND MODERATE SEAS FOR THE NEXT FEW DAYS.

**FORECASTER NOTES**

| VALID TIME            | 14-Jan 12Z    | 14-Jan 18z    | 15-Jan 00Z    | 15-Jan 06Z | 15-Jan 12Z | 15-Jan 18Z | 16-Jan 00Z | 16-Jan 06Z |
|-----------------------|---------------|---------------|---------------|------------|------------|------------|------------|------------|
| SKY CONDITION         | MOSTLY CLOUDY | MOSTLY CLOUDY | MOSTLY CLOUDY | CLOUDY     | CLOUDY     | CLOUDY     | CLOUDY     | CLOUDY     |
| WEATHER               | VCNTY FOG     | FOG           | FOG           | FOG        | FOG        | FOG        | FOG        | VCNTY FOG  |
| VISIBILITY (NM)       | 3 - 5         | 1 - 3         | 1/2 - 1       | <1/2       | <1/2       | <1/2       | 1/2 - 1    | 4 - 6      |
| SFC WINDS (DIR & KTS) | SSW 5-10      | SW 5-10       | SSW 5-10      | S 0-5      | SW 5-10    | SW 5-10    | WSW 5-10   | W 5-10     |
| SFC MAX/MIN (°C)      | 1/-1          |               |               | 1/-1       |            |            |            |            |
| SST RANGE (°C)        | 1/0           |               |               | 1/0        |            |            |            |            |
| SEAS (DIR & FT)       | W 4-6         | W 4-6         | W 3-5         | W 3-5      | W 3-5      | W 2-4      | W 2-4      | W 2-4      |
| ICE ACCRETION         | NIL           | NIL           | NIL           | NIL        | NIL        | NIL        | NIL        | NIL        |