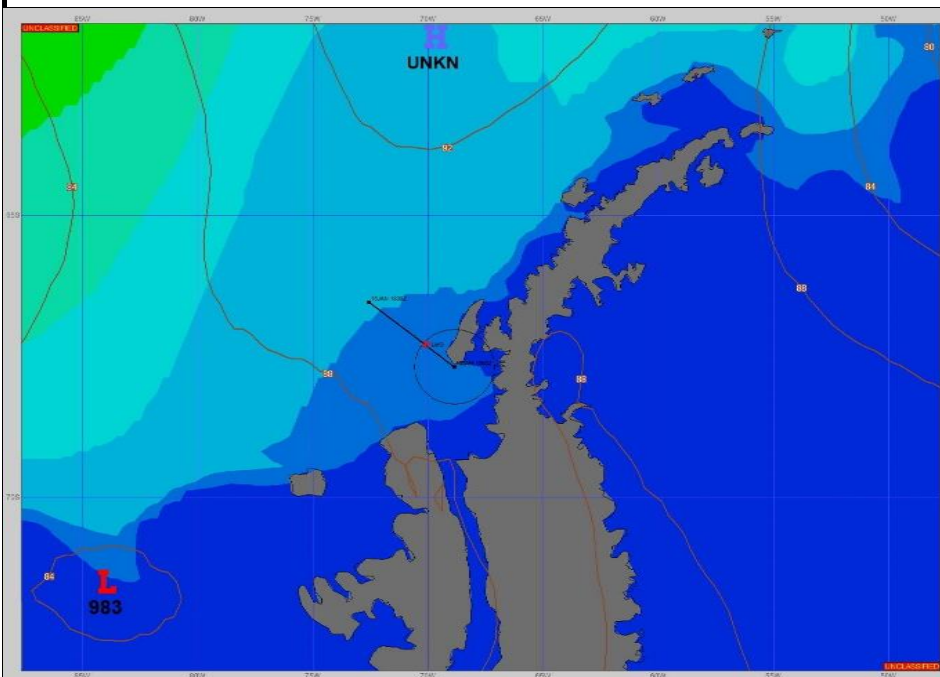


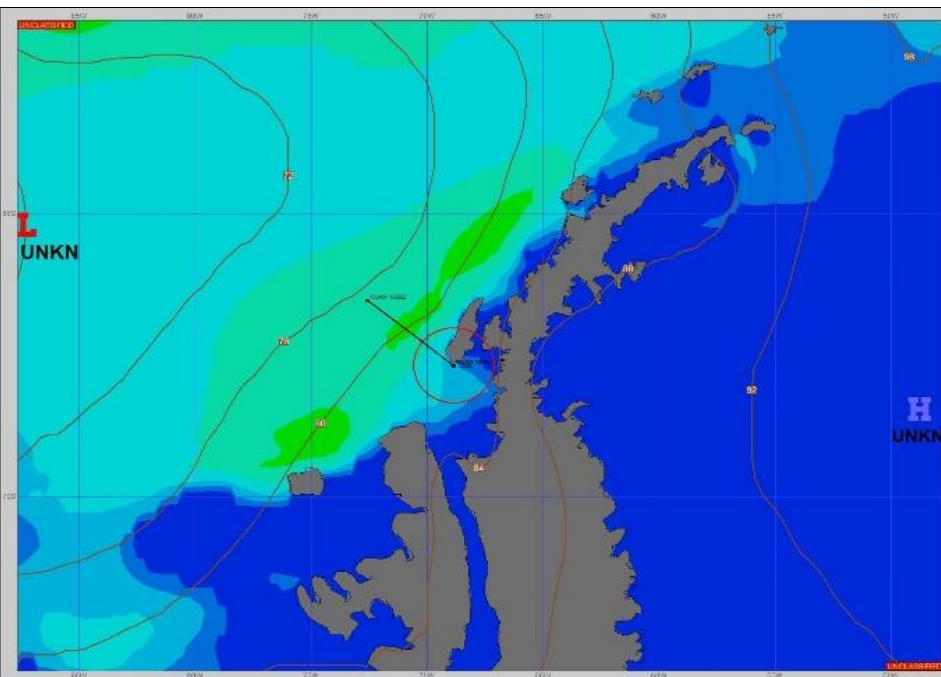
SURFACE ANALYSIS 16-Jan-2024 06Z



Seas (FT)



SURFACE FORECAST 17-Jan-2024 18Z



METSIT 06Z 16-Jan A 983 LOW IN THE BELLINGSHAUSEN SEA IS PRODUCING EXTENSIVE CLOUD COVER FOR THE AREA. EXPECT LIGHT SNOW AND THIN FOG EARLY THIS MORNING CLEARING OUT BY NOON. PARTLY TO MOSTLY CLOUDY SKIES, A GENTLE BREEZE AND SLIGHT SEAS ARE FORECAST FOR THE REMAINDER OF THE PERIOD.

FORECASTER NOTES

VALID TIME	16-Jan 12Z	16-Jan 18z	17-Jan 00Z	17-Jan 06Z	17-Jan 12Z	17-Jan 18Z	18-Jan 00Z	18-Jan 06Z
SKY CONDITION	MOSTLY CLOUDY	MOSTLY CLOUDY	PARTLY CLOUDY	PARTLY CLOUDY	MOSTLY CLOUDY	CLOUDY	MOSTLY CLOUDY	MOSTLY CLOUDY
WEATHER	SNOW & FOG	NONE	NONE	NONE	NONE	NONE	SNOW	SNOW
VISIBILITY (NM)	3 - 5	UNRESTRICTED	UNRESTRICTED	UNRESTRICTED	UNRESTRICTED	UNRESTRICTED	3 - 5	3 - 5
SFC WINDS (DIR & KTS)	SW 2-7	VRB 0-5	W 5-10	NE 5-10	ENE 5-10	E 5-10	ENE 10-15	ENE 10-15
SFC MAX/MIN (°C)	-2/-6				0/-2			
SST RANGE (°C)	2/1				2/1			
SEAS (DIR & FT)	W 1-3	SW 1-3 OW, < 1 IP	SW 1-3 OW, < 1 IP	SW 2-4 OW, < 1 IP	W 2-4	W 2-4	W 2-4	W 2-4
ICE ACCRETION	NIL	NIL	NIL	NIL	NIL	NIL	NIL	NIL