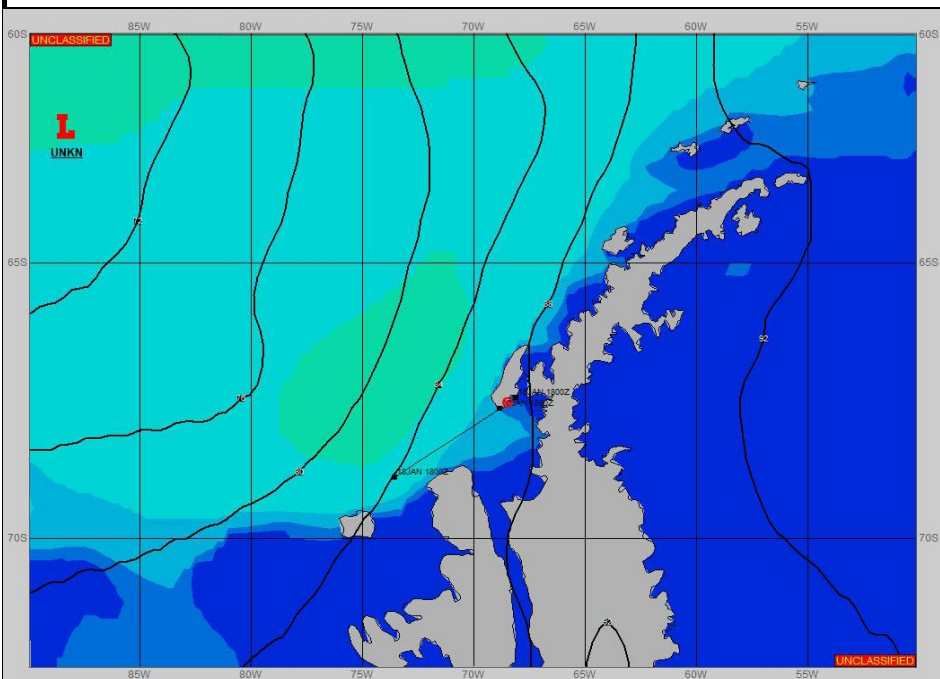
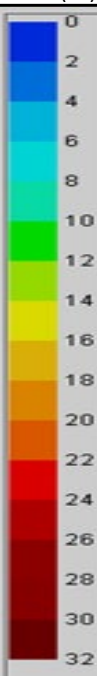


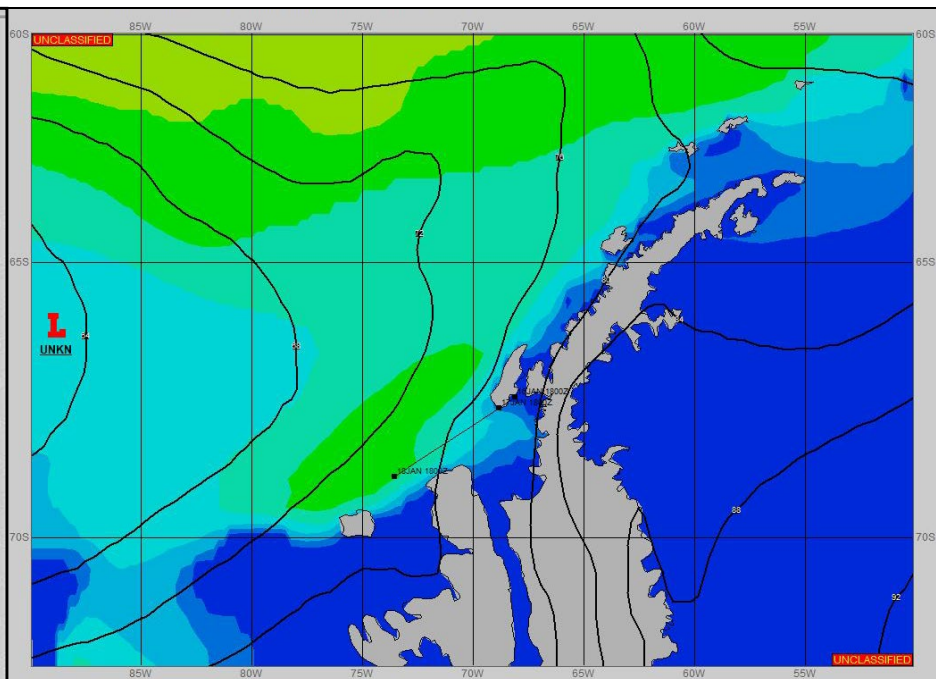
SURFACE ANALYSIS 17-Jan-2024 06Z



Seas (FT)



SURFACE FORECAST 18-Jan-2024 18Z



METSIT 06Z 17-Jan LOW PRESSURE TO THE WEST WILL DEEPEN TO 955MB NEAR 65S 100W BY 18/0600Z. THIS LOW WILL DROP A FRONTAL BOUNDARY ON THE OPERATIONS AREA BY 17/1200Z WITH REDUCTIONS TO VISIBILITY IN SNOW AND FOG. EXPECT IMPROVED VISIBILITY FROM 18/1200Z WITH STRONG GALE TO STORM FORCE WIND FROM EAST-NORTHEAST BY 18/1800Z BEING CHANNLED THROUGH/ABOUT THE COASTAL TERRAIN AND PENINSULA.

FORECASTER NOTES

VALID TIME	17-Jan 12Z	17-Jan 18z	18-Jan 00Z	18-Jan 06Z	18-Jan 12Z	18-Jan 18Z	19-Jan 00Z	19-Jan 06Z
SKY CONDITION	CLOUDY	CLOUDY	CLOUDY	CLOUDY	MOSTLY CLOUDY	CLOUDY	CLOUDY	CLOUDY
WEATHER	SNOW & FOG	SNOW & FOG	SNOW & FOG	SNOW & FOG	NONE	NONE	SNOW	NONE
VISIBILITY (NM)	1/2 - 1	2 - 4	3 - 5	2 - 4	UNRESTRICTED	UNRESTRICTED	2 - 4	UNRESTRICTED
SFC WINDS (DIR & KTS)	NE 15-20	NE 10-15	E 15-20	E 15-20 GUST 30	E 25-30 GUST 35	NE 25-30 GUST 45	NE 30-35 GUST 50	NE 25-30 GUST 45
SFC MAX/MIN (°C)	2/0				2/0			
SST RANGE (°C)	2/1				1/0			
SEAS (DIR & FT)	NW 2-4	NW 2-4	NW 5-7	N 5-7	NE 7-9	NE 8-10	NE 9-11	NE 8-10
ICE ACCRETION	NIL	NIL	NIL	NIL	NIL	NIL	NIL	NIL