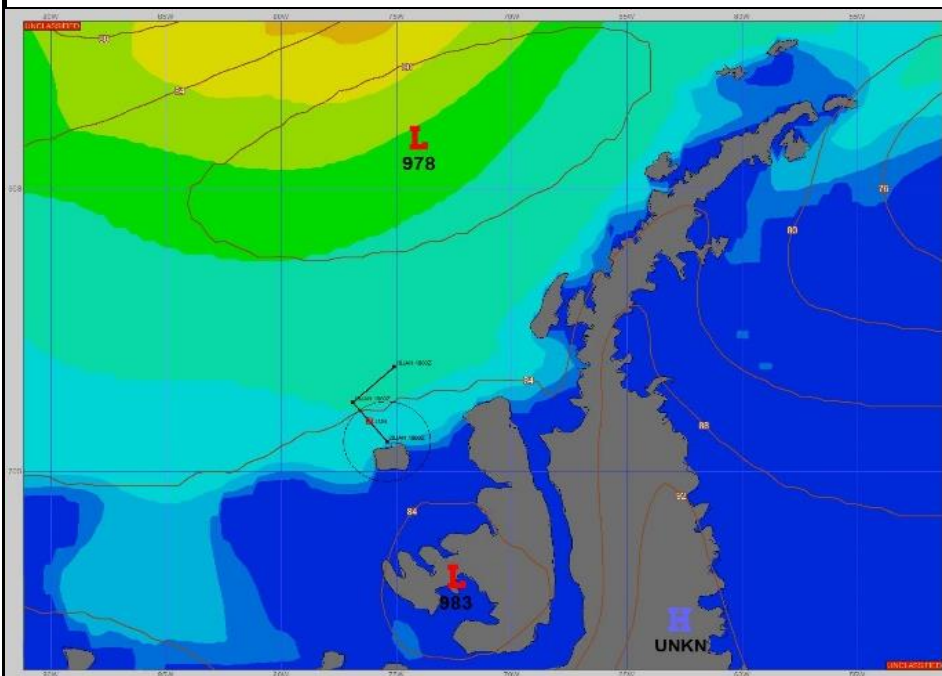


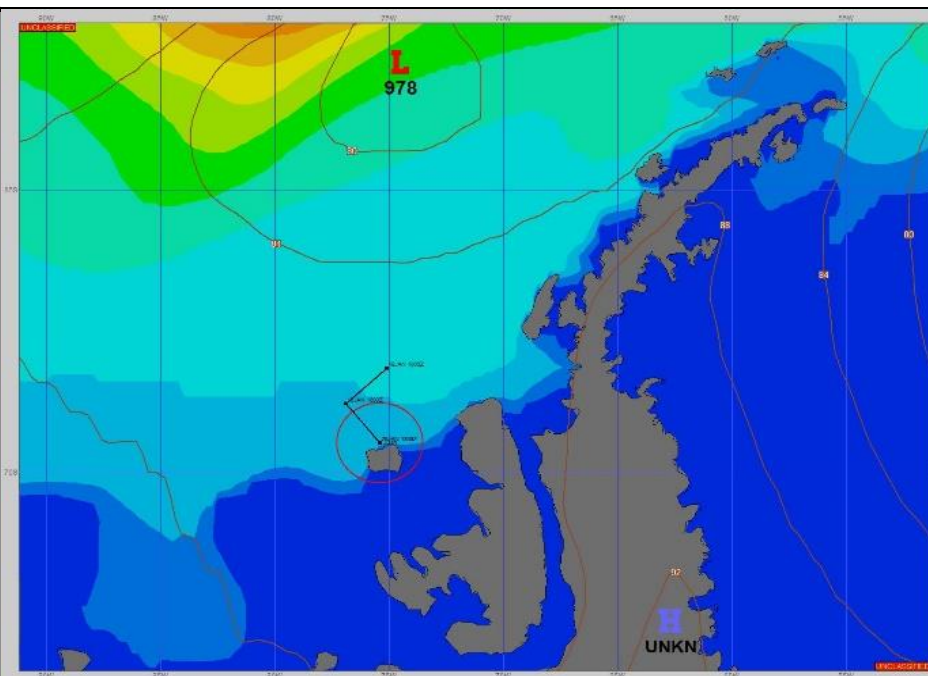
SURFACE ANALYSIS 20-Jan-2024 06Z



Seas (FT)



SURFACE FORECAST 21-Jan-2024 18Z



METSIT 06Z 20-Jan A 978MB LOW IN THE EASTERN BELLINGSHAUSEN SEA IN CONCERT WITH A 983MB LOW ADELAIDE ISLAND IS PRODUCING EXTENSIVE CLOUD COVER OVER YOUR AREA. EXPECT PERIODS OF REDUCED VISIBILITY IN FOG, A LIGHT BREEZE AND SLIGHT TO MODERATE SEAS FOR THIS FORECAST PERIOD.

FORECASTER NOTES Forecast based on ship positions received in 19 JAN SITREP. Winds may differ from those forecast due to vicinity of Charcot Island.

VALID TIME	20-Jan 12Z	20-Jan 18z	21-Jan 00Z	21-Jan 06Z	21-Jan 12Z	21-Jan 18Z	22-Jan 00Z	22-Jan 06Z
SKY CONDITION	MOSTLY CLOUDY	MOSTLY CLOUDY	MOSTLY CLOUDY	CLOUDY	MOSTLY CLOUDY	CLOUDY	MOSTLY CLOUDY	MOSTLY CLOUDY
WEATHER	SNOW & FOG	SNOW & FOG	FOG	FOG	FOG	FOG	FOG	FOG
VISIBILITY (NM)	1/2 - 1	1/2 - 1	1 - 3	1/2 - 1	1/2 - 1	3 - 5	1 - 3	2 - 4
SFC WINDS (DIR & KTS)	ENE 5-10	VRB 0-5	VRB 0-5	VRB 0-5	E 0-5	CALM	CALM	SW 0-5
SFC MAX/MIN (°C)	1/0			0/-2				
SST RANGE (°C)	1/0			1/0				
SEAS (DIR & FT)	NE 3-5	NE 2-4	N 2-4	N 2-4	NW 2-4	NW 1-3	NW 2-4	W 2-4
ICE ACCRETION	NIL	NIL	NIL	NIL	NIL	NIL	NIL	NIL