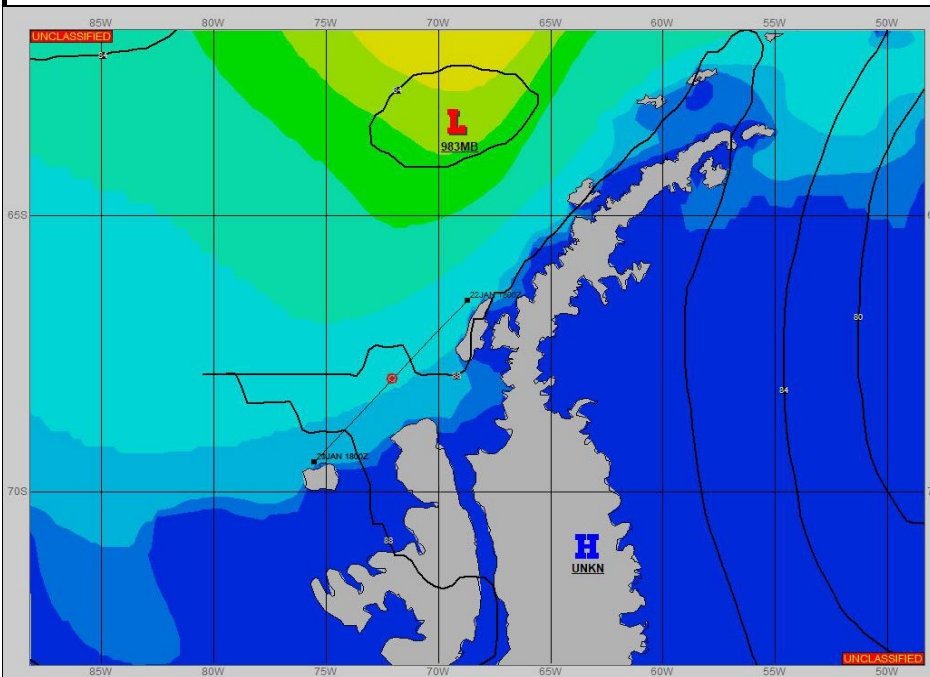
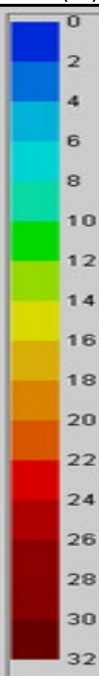


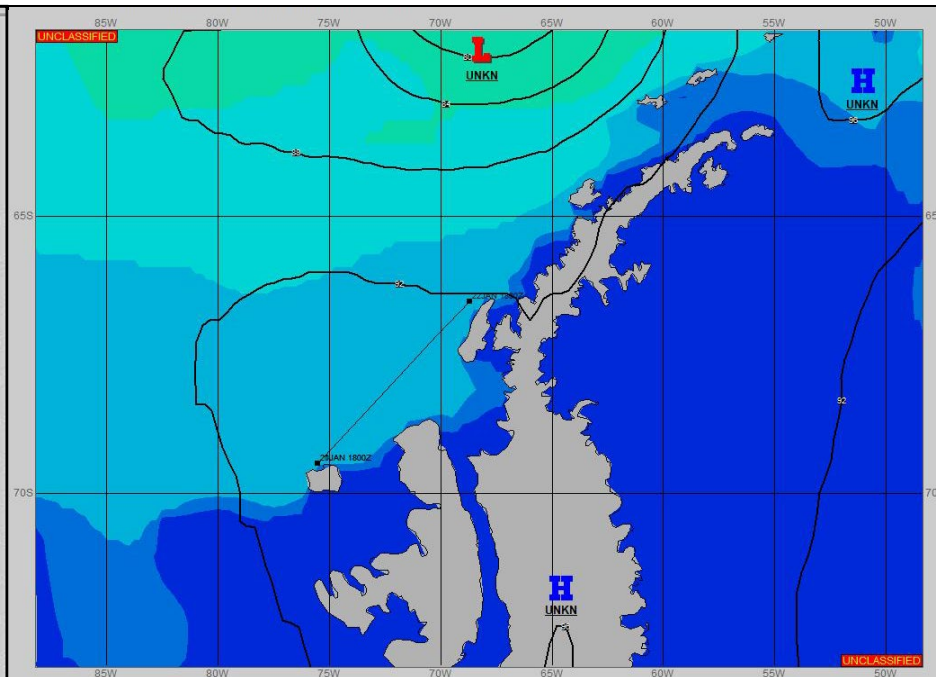
**SURFACE ANALYSIS 22-Jan-2024 06Z**



Seas (FT)



**SURFACE FORECAST 23-Jan-2024 18Z**



**METSIT 06Z 22-Jan** FILLING 983MB LOW NEAR 63S 069W MOVING NORTHEAST. EXPECT MILD WEATHER CONDITIONS FOR THE TRANSIT NORTH UNDER PREDOMINANTLY HIGH PRESSURE.

**FORECASTER NOTES**

VALID TIME	22-Jan 12Z	22-Jan 18z	23-Jan 00Z	23-Jan 06Z	23-Jan 12Z	23-Jan 18Z	24-Jan 00Z	24-Jan 06Z
SKY CONDITION	CLOUDY	MOSTLY CLOUDY	PARTLY CLOUDY	PARTLY CLOUDY	MOSTLY CLOUDY	CLOUDY	CLOUDY	CLOUDY
WEATHER	NONE	NONE	NONE	NONE	FOG	NONE	NONE	NONE
VISIBILITY (NM)	UNRESTRICTED	UNRESTRICTED	UNRESTRICTED	UNRESTRICTED	<1/2	UNRESTRICTED	UNRESTRICTED	UNRESTRICTED
SFC WINDS (DIR & KTS)	NW 5	SW 5	SW 5-10	SE 5	NE 5	E 5	S 5-10	SE 10
SFC MAX/MIN (°C)	1/-3				0/-3			
SST RANGE (°C)	2/1				2/1			
SEAS (DIR & FT)	NW 5-7	NW 5-7	NW 5-7	NW 4-6	NW 3-5	N 0-1	NW 0-1	E 0-1
ICE ACCRETION	NIL	NIL	NIL	NIL	NIL	NIL	NIL	NIL