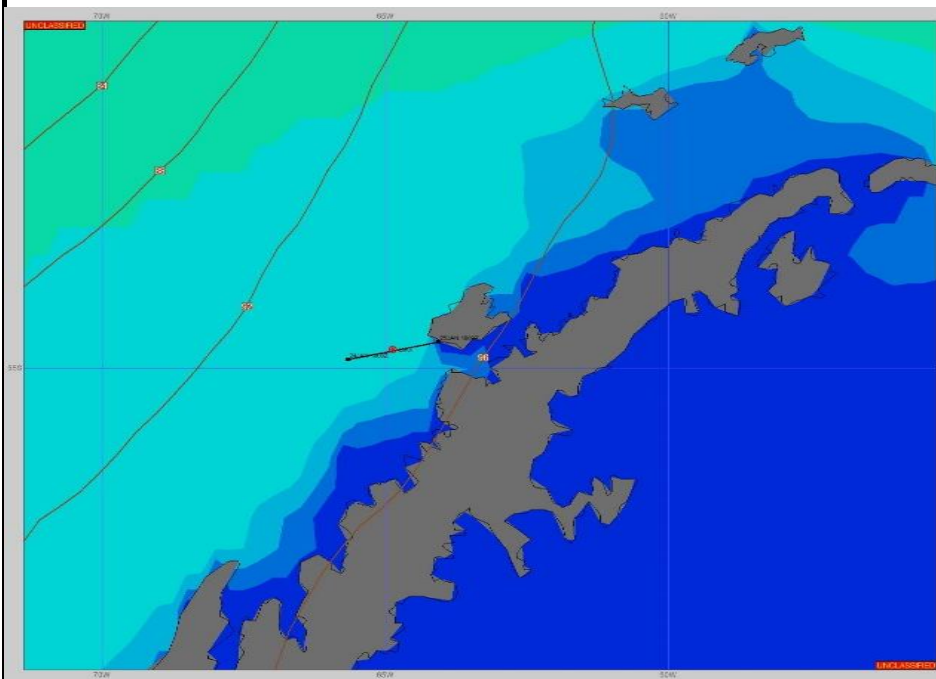


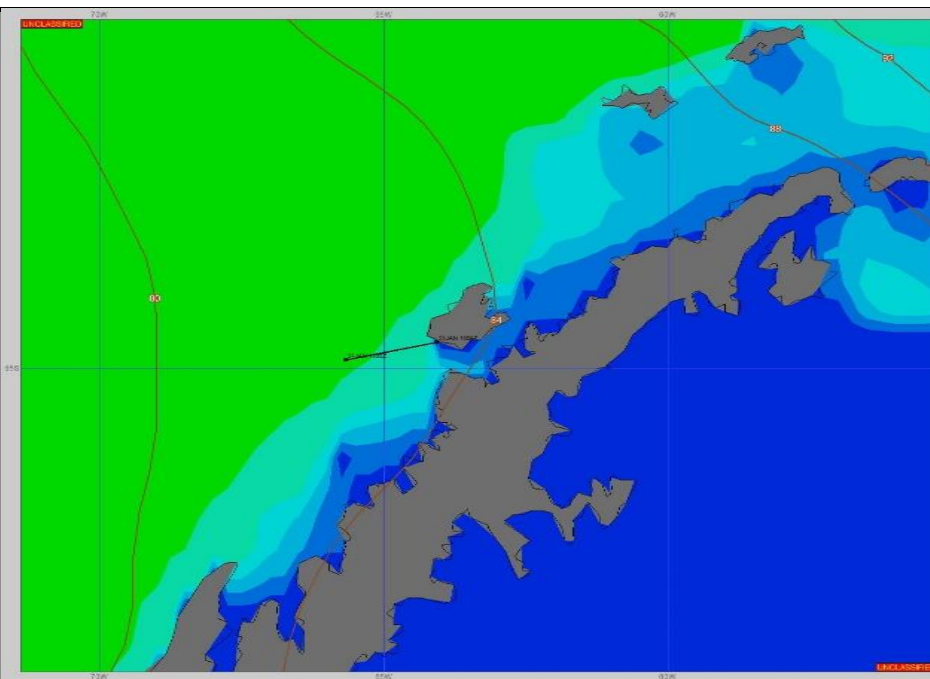
SURFACE ANALYSIS 25-Jan-2024 06Z



Seas (FT)



SURFACE FORECAST 26-Jan-2024 18Z



METSIT 06Z 25-Jan A LOW PRESSURE SYSTEM OVER THE BELLINGSHAUSEN SEA IS MAKING ITS WAY TOWARD THE DRAKE PASSAGE PRODUCING EXTENSIVE CLOUD COVER FOR THE AREA. EXPECT A FRESH BREEZE AND SLIGHT TO MODERAT SEAS SEAS WITH PERIODS OF MIXED SNOW AND AND RAIN FOR THE REMAINDER OF YOUR CRUISE.

FORECASTER NOTES This is my final forecast unless otherwise required. Timely observations received from your ship greatly appreciated. Outlook for arrival at your destination: Please refer to the Palmer Daily Forecast.

VALID TIME	25-Jan 12Z	25-Jan 18z	26-Jan 00Z	26-Jan 06Z	26-Jan 12Z	26-Jan 18Z	27-Jan 00Z	27-Jan 06Z
SKY CONDITION	CLOUDY	CLOUDY	IN PORT	IN PORT	IN PORT	IN PORT	IN PORT	IN PORT
WEATHER	MIXED	MIXED	PALMER STATION	PALMER STATION	PALMER STATION	PALMER STATION	PALMER STATION	PALMER STATION
VISIBILITY (NM)	2 - 4	2 - 4						
SFC WINDS (DIR & KTS)	ENE 15-20	E 20-25						
SFC MAX/MIN (°C)	0/-1							
SST RANGE (°C)	2/1							
SEAS (DIR & FT)	NW 4-6	W 0-2, <1 IP						
ICE ACCRETION	NIL	NIL						