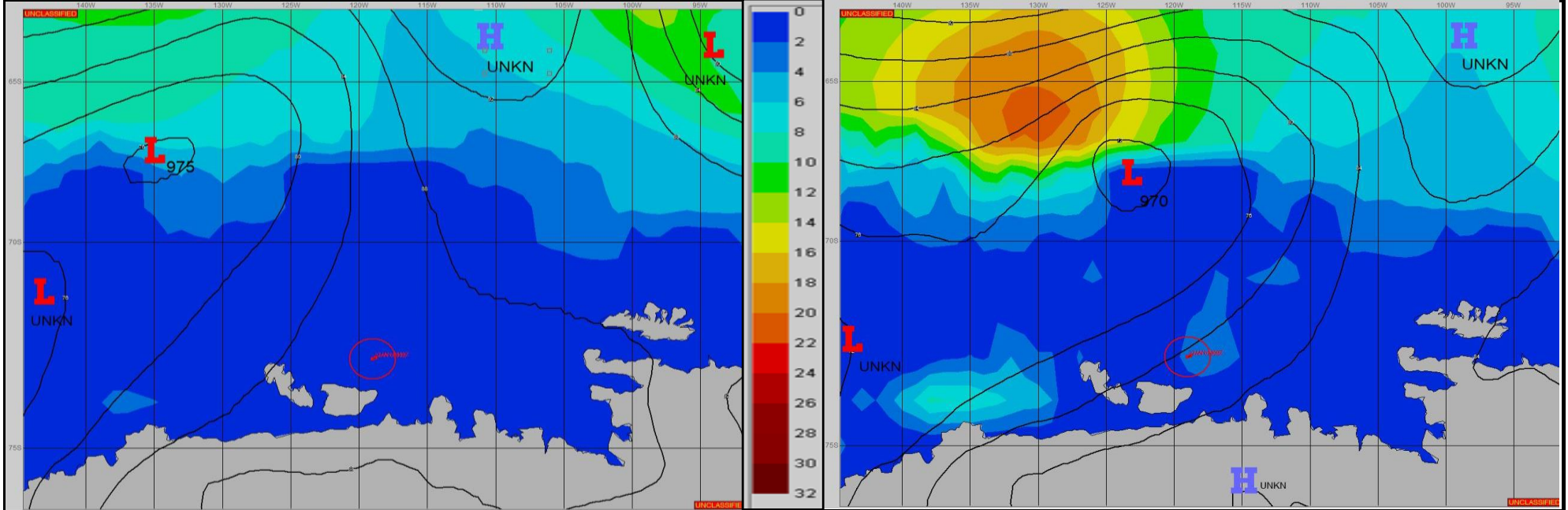


SURFACE ANALYSIS 2-Jan-2024 06Z

Seas (FT)

SURFACE FORECAST 3-Jan-2024 18Z



METSIT 06Z 2-Jan A RIDGE OF HIGH PRESSURE TO THE NORTH OF POSITION MOVES EASTWARD AS A LOW-PRESSURE SYSTEM MOVES IN FROM THE WEST TIGHTENING THE PRESSURE GRADIENT AS CENTRAL PRESSURE OF LOW CENTER DROPS FROM 975MB TO 970MB NEAR 68S 123W. INDICATIONS ARE FOR CLOUDY SKIES AND PERSISTENT FOG WITH LIGHT WINDS UNTIL 03/0000Z. THEN EXPECT INCREASING WINDS TO NEAR GALE FORCE THROUGH THE END OF FORECAST PERIOD WITH PERIODS OF REDUCED VISIBILITY IN PRECIPITATION TO LESS THAN 1/2NM.

FORECASTER NOTES

VALID TIME	2-Jan 12Z	2-Jan 18Z	3-Jan 00Z	3-Jan 06Z	3-Jan 12Z	3-Jan 18Z	4-Jan 00Z	4-Jan 06Z
SKY CONDITION	CLOUDY	CLOUDY	CLOUDY	CLOUDY	CLOUDY	CLOUDY	CLOUDY	CLOUDY
WEATHER	FOG	FOG	FOG	SNOW & FOG	SNOW & FOG	SNOW & FOG	SNOW & FOG	SNOW & FOG
VISIBILITY (NM)	1 - 3	1 - 3	1 - 3	1/2 - 1	1/2 - 1	1/2 - 1	1/2 - 1	<1/2
SFC WINDS (DIR & KTS)	NE 5-10	NE 5-10	NE 5-10	NE 15-20 GUST 25	NE 15-20 GUST 25	ENE 5-20-25 GUST 30	E 20-25 GUST 35	E 20-25 GUST 35
SFC MAX/MIN (°C)	-1/-2				-1/-2			
SST RANGE (°C)	-1.5/-2.0				-1.5/-2.0			
SEAS (DIR & FT)	NE 0-1	NE 0-1	NE 0-1	NNE 1-3	NE 1-3	NE 2-4	ENE 4-6	E 5-7
ICE ACCRETION	LIGHT	LIGHT	LIGHT	LIGHT	LIGHT	LIGHT	LIGHT	LIGHT