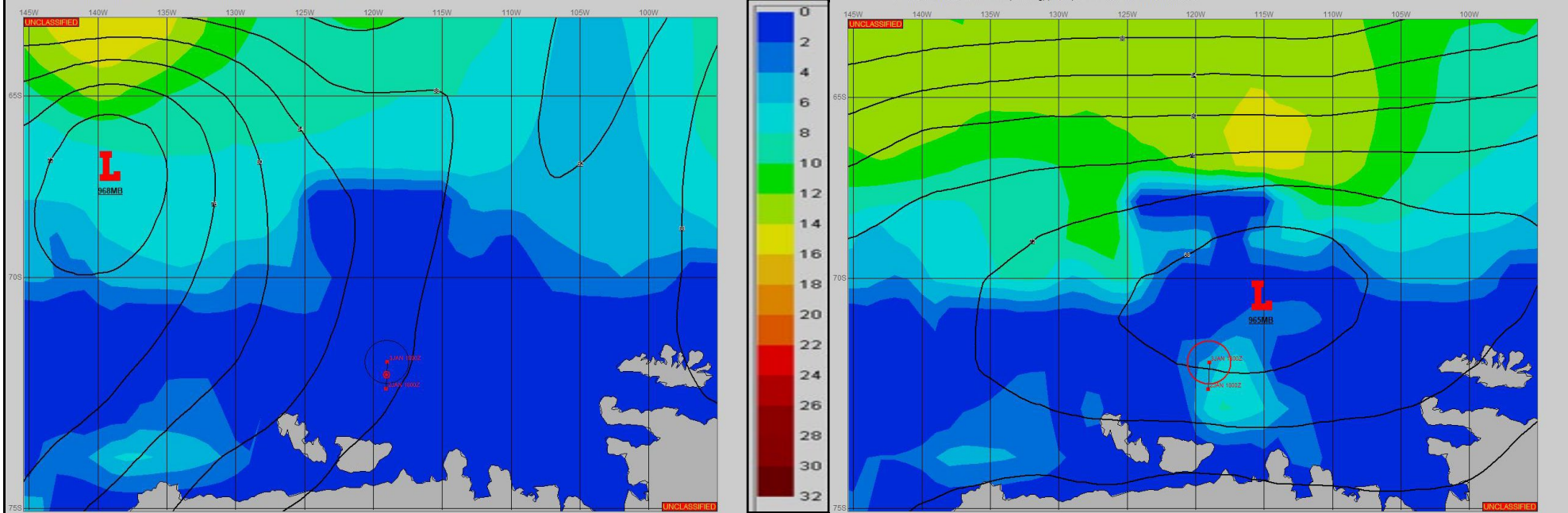


SURFACE ANALYSIS 3-Jan-2024 06Z

Seas (FT)

SURFACE FORECAST 4-Jan-2024 18Z



METSIT 06Z 3-Jan 968MB LOW PRESSURE NEAR 67S 139W WILL DEEPEN TO 963MB NEAR 70S 130W BY 03/1800Z, THEN FILL TO 965MB NEAR 71S 115W BY 04/1800Z. EXPECT DETERIORATING CONDITIONS AS THE LOW PRESSURE DEEPENS MOVING SOUTHEAST TOWARDS THE OPERATING AREA. THE TIGHTENING PRESSURE GRADIENT WILL TAKE WINDS TO GALE STRENGTH FROM APPROXIMATELY 03/1800Z THROUGH 04/1500Z WITH VISIBILITY FREQUENTLY BELOW 1/2 MILE. CONDITIONS WILL IMPROVE FROM 04/1800Z AS THE LOW FILLS AND MOVES EAST.

FORECASTER NOTES

VALID TIME	3-Jan 12Z	3-Jan 18Z	4-Jan 00Z	4-Jan 06Z	4-Jan 12Z	4-Jan 18Z	5-Jan 00Z	5-Jan 06Z
SKY CONDITION	CLOUDY	CLOUDY	CLOUDY	CLOUDY	CLOUDY	CLOUDY	CLOUDY	CLOUDY
WEATHER	FOG	SNOW & FOG	SNOW & FOG	SNOW & FOG	SNOW & FOG	FOG	FOG	NONE
VISIBILITY (NM)	1 - 3	<1/2	<1/2	1/2 - 1	1/2 - 1	1/2 - 1	1 - 3	UNRESTRICTED
SFC WINDS (DIR & KTS)	NE 20-25	NE 25-30 GUST 40	E 30-35 GUST 45	E 30-35 GUST 45	E 25-30 GUST 40	SE 20-25 GUST 35	SE 20-25 GUST 30	SE 15-20 GUST 25
SFC MAX/MIN (°C)	-1/-2				0/-1			
SST RANGE (°C)	-1/-2				-1/-2			
SEAS (DIR & FT)	NE 1-3	NE 3-5	NE 4-6	NE 5-7	E 4-6	SE 3-5	SE 3-5	SE 2-4
ICE ACCRETION	LIGHT	LIGHT	LIGHT	LIGHT	LIGHT	LIGHT	LIGHT	LIGHT