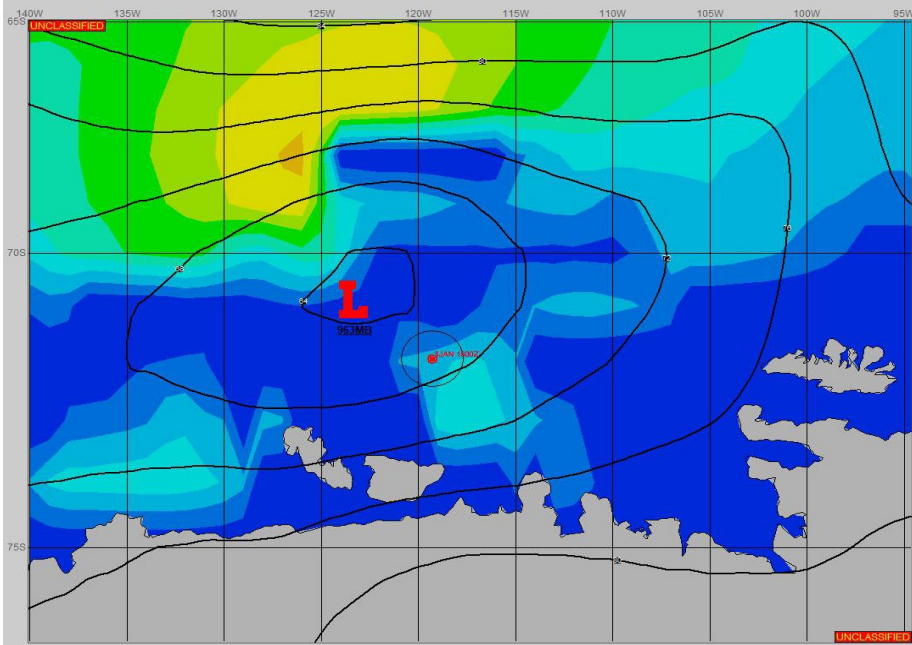


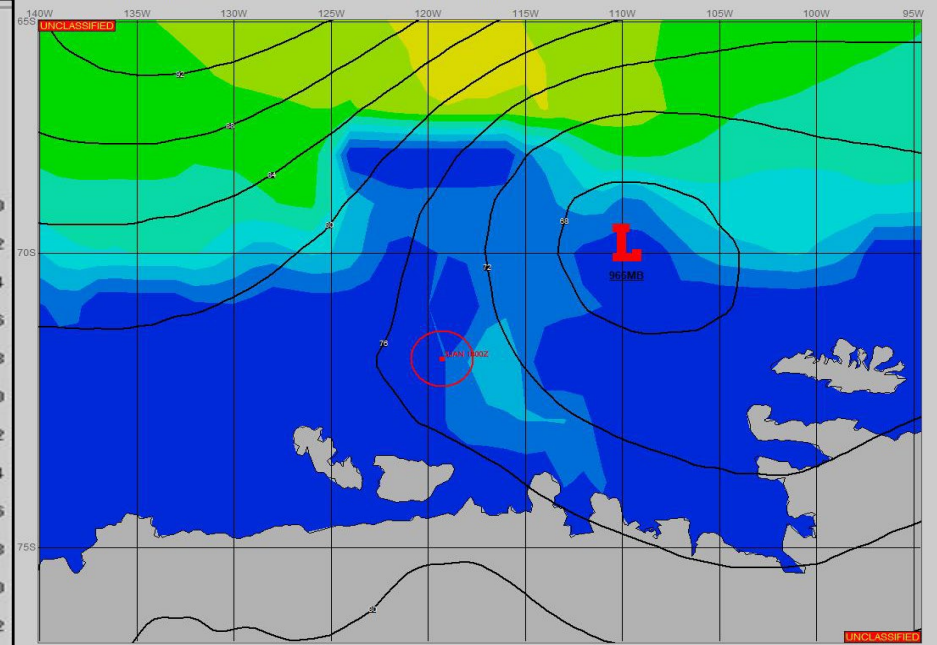
SURFACE ANALYSIS 4-Jan-2024 06Z



Seas (FT)



SURFACE FORECAST 5-Jan-2024 18Z



METSIT 06Z 4-Jan 963MB LOW NEAR 71S 123W TO MOVE EAST- NORTHEAST AND FILL TO 966MB NEAR 70S 110W BY 05/1800Z. EXPECT CONTINUED RESTRICTIONS TO VISIBILITY IN FOG, LIGHT PRECIPITATION AND NEAR GALE WINDS WHILE IN CLOSE PROXIMITY TO THE LOW PRESSURE CENTER THROUGH 05/0600Z. CONDITIONS WILL IMPROVE FROM 05/0900Z AS THE LOW PRESSURE FILLS AND MOVES EAST.

FORECASTER NOTES

VALID TIME	4-Jan 12Z	4-Jan 18Z	5-Jan 00Z	5-Jan 06Z	5-Jan 12Z	5-Jan 18Z	6-Jan 00Z	6-Jan 06Z
SKY CONDITION	CLOUDY	CLOUDY	CLOUDY	CLOUDY	CLOUDY	PARTLY CLOUDY	PARTLY CLOUDY	PARTLY CLOUDY
WEATHER	SNOW & FOG	SNOW & FOG	SNOW & FOG	SNOW & FOG	FOG	NONE	NONE	FOG
VISIBILITY (NM)	<1/2	<1/2	<1/2	1/2 - 1	2 - 4	UNRESTRICTED	UNRESTRICTED	1 - 3
SFC WINDS (DIR & KTS)	E 20-25 GUST 35	SE 20-25 GUST 30	SE 20-25 GUST 30	SE 15-20 GUST 25	SE 15-20 GUST 25	SE 10-15 GUST 20	SW 5-10	W 10-15
SFC MAX/MIN (°C)	-1/-2				0/-2			
SST RANGE (°C)	-1/-2				-1/-2			
SEAS (DIR & FT)	ESE 2-4	SE 2-4	SE 2-4	SE 1-3	SE 1-3	SE 1-3	S 0-2	W 0-2
ICE ACCRETION	LIGHT	LIGHT	LIGHT	LIGHT	LIGHT	LIGHT	LIGHT	LIGHT