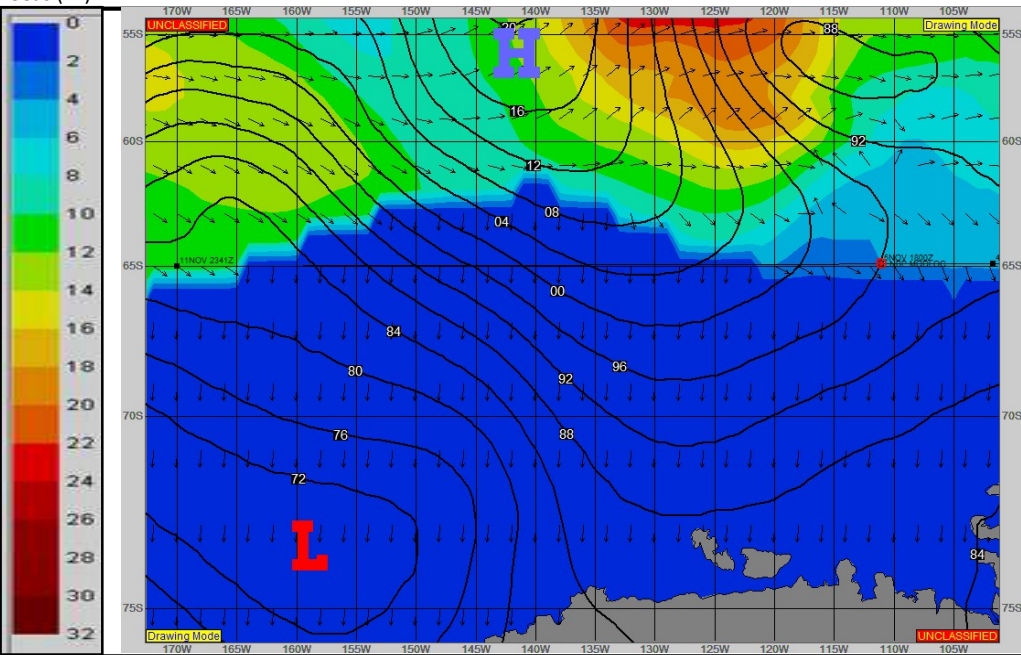
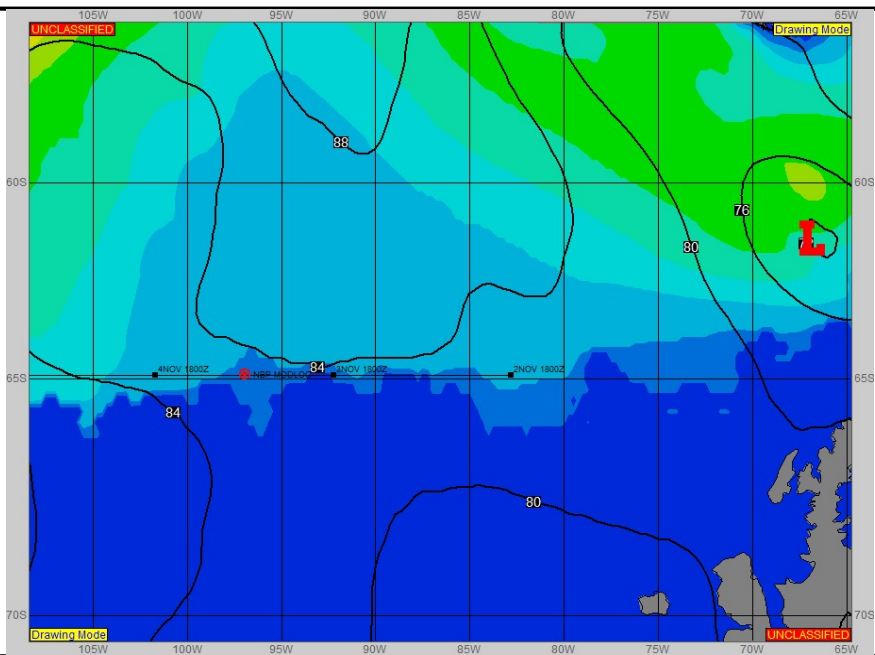


**SURFACE ANALYSIS 4-Nov-2024 06Z**

Seas (FT)

**SURFACE FORECAST 5-Nov-2024 18Z**



**METSIT 06Z 4-Nov** An area of weak low pressure passes along the Southern Ocean on the northern side of NBP's path, causing initial snow along the first portion of the forecast period and supplementing additional lower level moisture along the route. As the low progresses through the Bellingshausen Sea, the subsequent trough passes through followed by a high pressure system. The systems will drive lower cloud decks and periodic fog along the route.

**FORECASTER NOTES**

VALID TIME	4-Nov 12Z	4-Nov 18Z	5-Nov 00Z	5-Nov 06Z	5-Nov 12Z	5-Nov 18Z	6-Nov 00Z	6-Nov 06Z
SKY CONDITION	CLOUDY	CLOUDY	CLOUDY	CLOUDY	MOSTLY CLOUDY	CLOUDY	CLOUDY	CLOUDY
WEATHER	SNOW & FOG	SNOW & FOG	FOG	FOG	FOG	FOG	FOG	FOG
VISIBILITY (NM)	<1/2	1 - 3	1 - 3	1 - 3	1 - 3	1 - 3	1 - 3	1/2 - 1
SFC WINDS (DIR & KTS)	SE 8-12	SE 13-18	S 8-12	SW 5-10	SW 8-12	SW 10-15	SW 10-15 GUST 20	WSW 15-20 GUST 25
SFC MAX/MIN (°C)	-3/-5				-2/-5			
SST RANGE (°C)	0/-2				0/-1			
SEAS (DIR & FT)	WNW 4-7	NW 6-9	NW 4-7	NW 4-7	NW 3-6	NW 3-6	NW 3-6	WNW 6-9
ICE ACCRETION	LIGHT	LIGHT	LIGHT	LIGHT	LIGHT	LIGHT	LIGHT	LIGHT