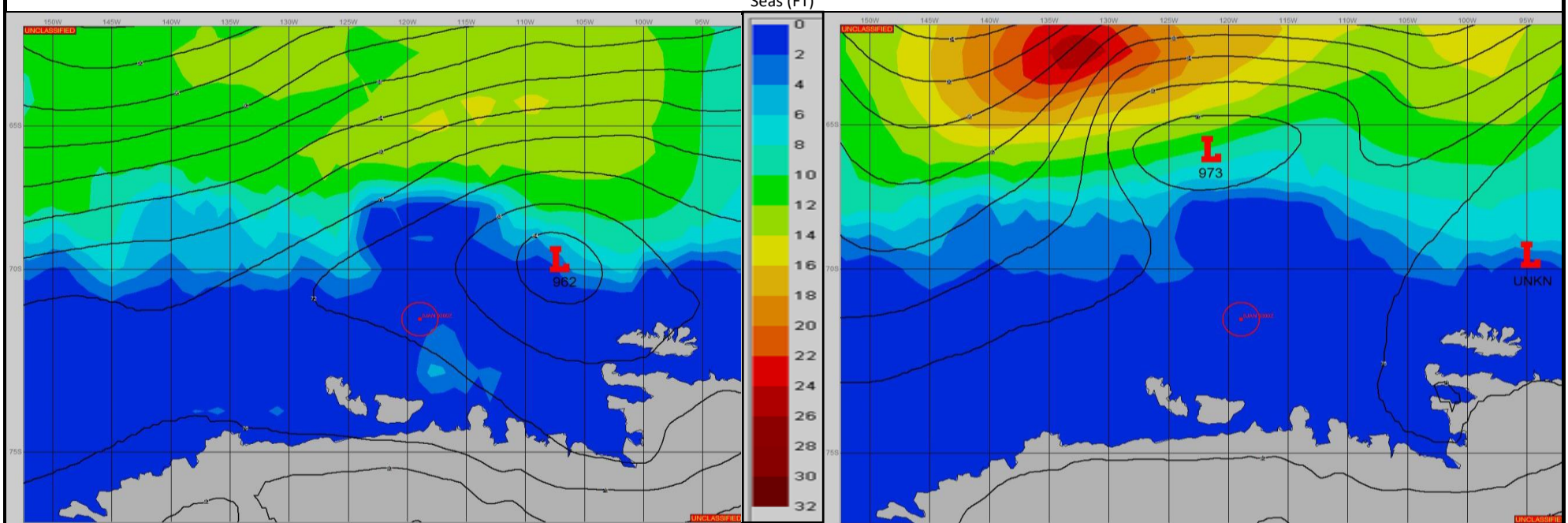


SURFACE ANALYSIS 5-Jan-2024 06Z

SURFACE FORECAST 6-Jan-2024 18Z



METSIT 06Z 5-Jan A 962MB LOW NEAR 70S 107W WILL MOVE EAST-NORTHEAST AS A SECOND LOW WITH CENTRAL PRESSURE 973MB MOVES IN FROM THE NW TO NEAR 66S 121W BY 06/1800Z. EXPECT MOSTLY FAVORABLE CONDITIONS WITH LIGHT WINDS UNTIL 06/00Z, FOLLOWED BY INCREASING REDUCTIONS TO VISIBILITY DUE TO FOG AS A COL AREA FORMS BETWEEN THE 2 LOW CENTERS.

FORECASTER NOTES

VALID TIME	5-Jan 12Z	5-Jan 18Z	6-Jan 00Z	6-Jan 06Z	6-Jan 12Z	6-Jan 18Z	7-Jan 00Z	7-Jan 06Z
SKY CONDITION	MOSTLY CLOUDY	PARTLY CLOUDY	PARTLY CLOUDY	CLOUDY	CLOUDY	CLOUDY	CLOUDY	CLOUDY
WEATHER	FOG	FOG	FOG	FOG	FOG	FOG	FOG	FOG
VISIBILITY (NM)	2 - 4	3 - 5	1 - 3	1/2 - 1	1/2 - 1	1/2 - 1	1/2 - 1	1/2 - 1
SFC WINDS (DIR & KTS)	SE 10-15 GUST 20	S 5-10	SW 10-15 GUST 20	W 5-10	W 5-10	WSW 5-10	WSW 5-10	WSW 10-15
SFC MAX/MIN (°C)	-1/-2				-1/-3			
SST RANGE (°C)	-1/-2				-1/-2			
SEAS (DIR & FT)	E 0-2	E 0-1	E 0-2	E 0-1	E 0-1	E 0-1	E 0-1	SW 0-1
ICE ACCRETION	LIGHT	LIGHT	LIGHT	LIGHT	LIGHT	LIGHT	LIGHT	LIGHT