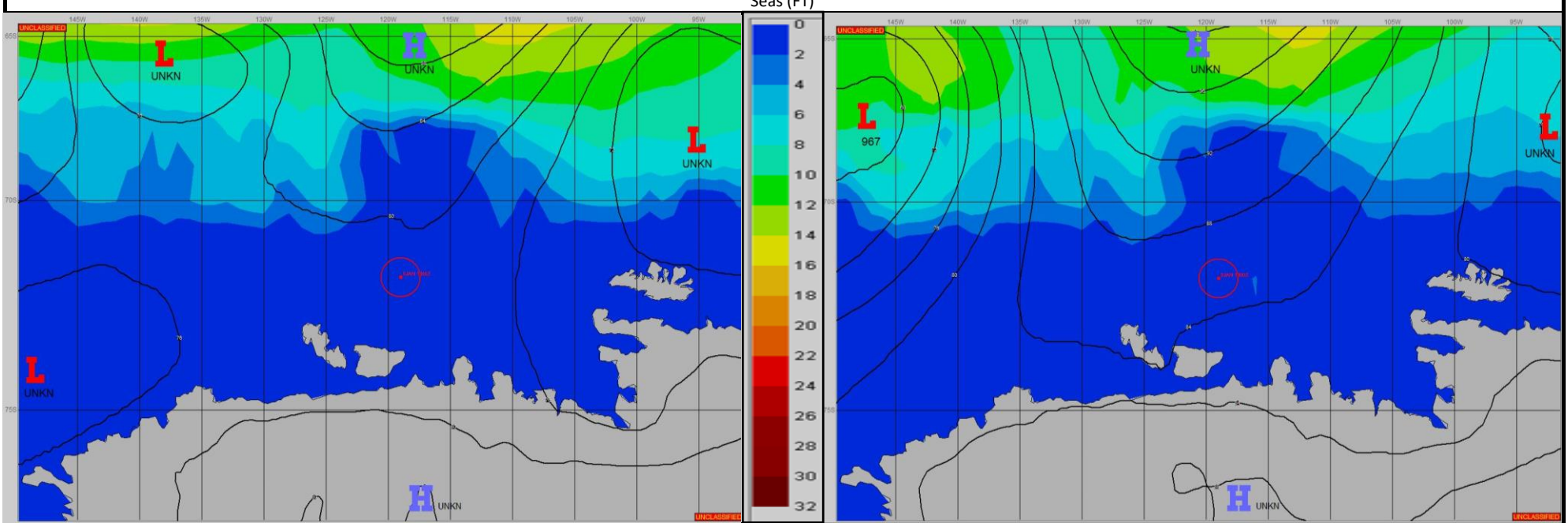


SURFACE ANALYSIS 6-Jan-2024 06Z

SURFACE FORECAST 7-Jan-2024 18Z



METSIT 06Z 6-Jan A COL FORMS BETWEEN AREAS OF LOW PRESSURE TO BEGIN THE PERIOD WITH HIGH PRESSURE TO THE NORTH CAUSING A TIGHTENING OF THE PRESSURE GRADIENT BY 07/18Z. INDICATIONS ARE FOR LIGHT WINDS GRADUALLY INCREASING FROM THE WSW WITH MOSTLY CLOUDY SKIES AND PERIODS OF REDUCED VISIBILITY WITH FOG LESS THAN 1NM. EXPECT WINDS BECOMING NORTHERLY AND GUSTY DUE TO INFLUENCE OF THE HIGH LATE IN THE PERIOD.

FORECASTER NOTES

VALID TIME	6-Jan 12Z	6-Jan 18Z	7-Jan 00Z	7-Jan 06Z	7-Jan 12Z	7-Jan 18Z	8-Jan 00Z	8-Jan 06Z
SKY CONDITION	PARTLY CLOUDY	MOSTLY CLOUDY	MOSTLY CLOUDY	MOSTLY CLOUDY	MOSTLY CLOUDY	MOSTLY CLOUDY	MOSTLY CLOUDY	MOSTLY CLOUDY
WEATHER	FOG	FOG	FOG	FOG	FOG	FOG	FOG	FOG
VISIBILITY (NM)	1 - 3	1 - 3	1 - 3	1 - 3	1/2 - 1	1 - 3	1 - 3	1 - 3
SFC WINDS (DIR & KTS)	NW 5-10	VRB 5	SW 5	SW 5-10	WSW 10-15	WSW 10-15	W 10-15	N 10-15 GUST 20
SFC MAX/MIN (°C)	-3/-4				-1/-3			
SST RANGE (°C)	-1/-2				-1/-2			
SEAS (DIR & FT)	SE 0-1	SE 0-1	SE 0-1	SE 0-1	SW 1-2	SW 1-2	WSW 0-1	S 1-2
ICE ACCRETION	LIGHT	LIGHT	LIGHT	LIGHT	LIGHT	LIGHT	LIGHT	LIGHT