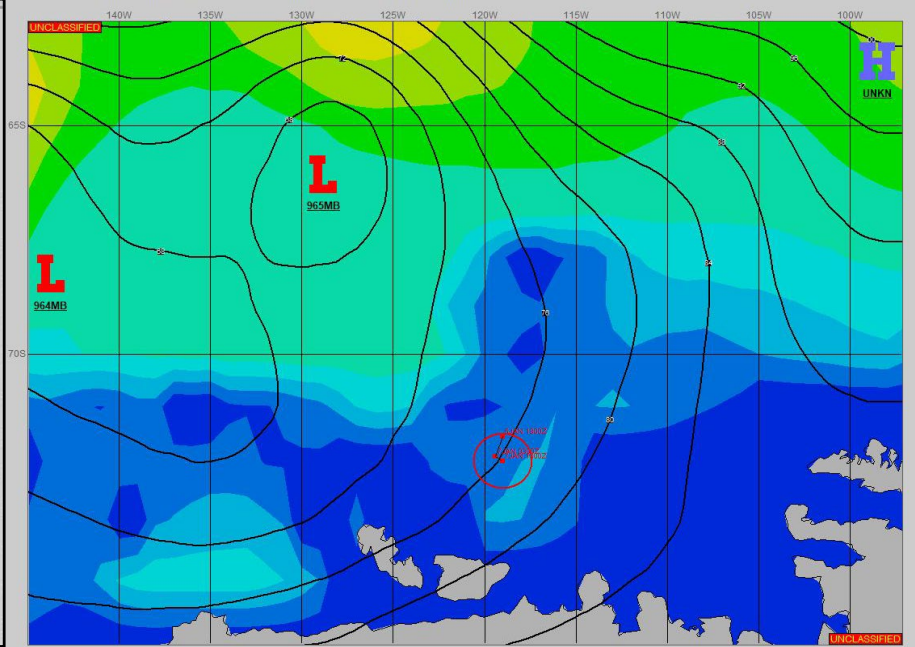
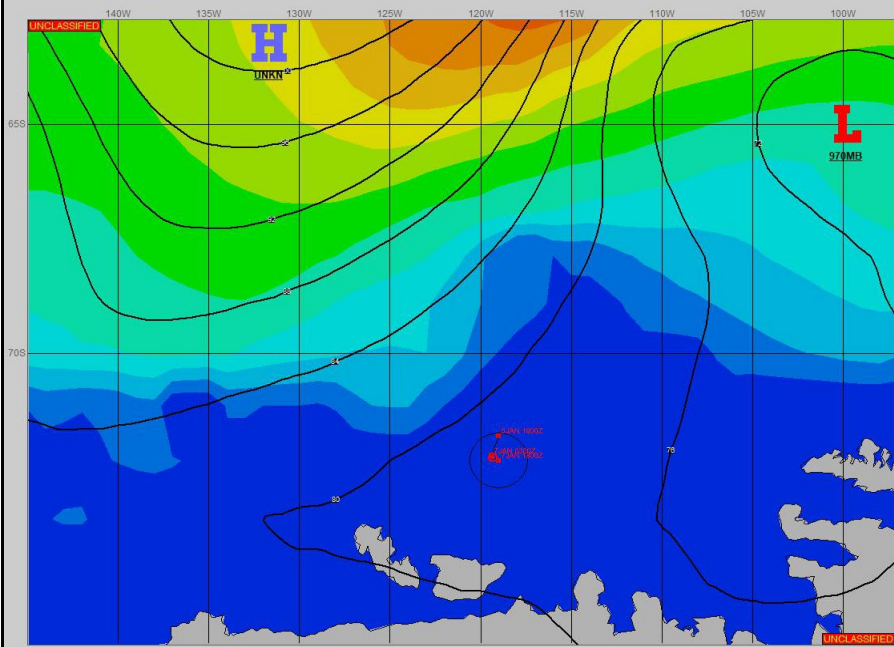


SURFACE ANALYSIS 7-Jan-2024 06Z

Seas (FT)

SURFACE FORECAST 8-Jan-2024 18Z



METSIT 06Z 7-Jan A RIDGE OF HIGH PRESSURE WILL MOVE ACROSS THE OPERATIONS THROUGH 08/0600Z. AS THE HIGHER PRESSURE MOVES EAST, LOW PRESSURE WILL DEEPEN EASTWARD BETWEEN 65S AND 70S AND THE TIGHTENING PRESSURE GRADIENT WILL INCREASE WIND SPEEDS FROM 08/1200Z. A 965MB LOW CENTER WILL CLOSE BY 08/1800Z NEAR 66S 129W AND DEEPEN TO 954MB NEAR 70S 118W BY THE END OF THE PERIOD. THIS DEEPENING LOW WILL FURTHER TIGHTEN THE PRESSURE GRADIENT INCREASING WINDS TO GALE FORCE. EXPECT VISIBILITY DECREASING FREQUENTLY TO LESS THAN 1/2 MILE FOG, PRECIPITATION FROM 08/0600Z.

FORECASTER NOTES

VALID TIME	7-Jan 12Z	7-Jan 18Z	8-Jan 00Z	8-Jan 06Z	8-Jan 12Z	8-Jan 18Z	9-Jan 00Z	9-Jan 06Z
SKY CONDITION	CLOUDY	CLOUDY	CLOUDY	CLOUDY	CLOUDY	CLOUDY	CLOUDY	CLOUDY
WEATHER	FOG	FOG	FOG	SNOW & FOG	SNOW & FOG	SNOW & FOG	SNOW & FOG	SNOW & FOG
VISIBILITY (NM)	1 - 3	1 - 3	1 - 3	1/2 - 1	<1/2	<1/2	<1/2	<1/2
SFC WINDS (DIR & KTS)	SW 10-15	W 10-15	NW 10-15	NW 10-15	NE 20-25 GUST 30	NE 20-25 GUST 30	E 20-25 GUST 30	SE 30-35 GUST 45
SFC MAX/MIN (°C)	1/-1				0/-2			
SST RANGE (°C)	-1/-2				-1/-2			
SEAS (DIR & FT)	SW 0-1	W 0-1	NW 0-2	NW 0-2	NE 1-3	NE 2-4	NE 3-5	E 5-7
ICE ACCRETION	LIGHT	LIGHT	LIGHT	LIGHT	LIGHT	LIGHT	LIGHT	LIGHT