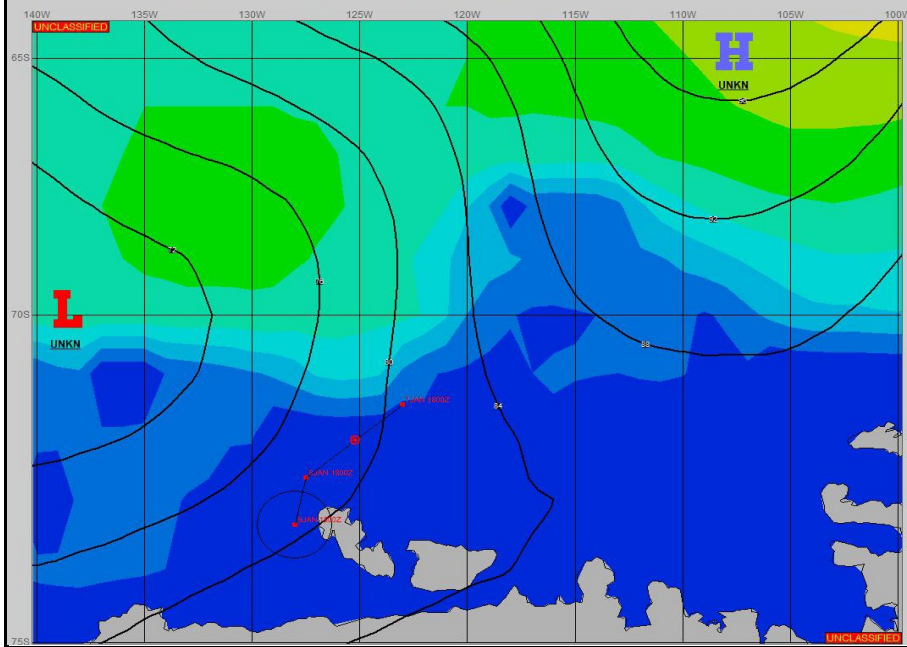
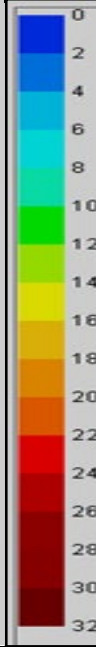


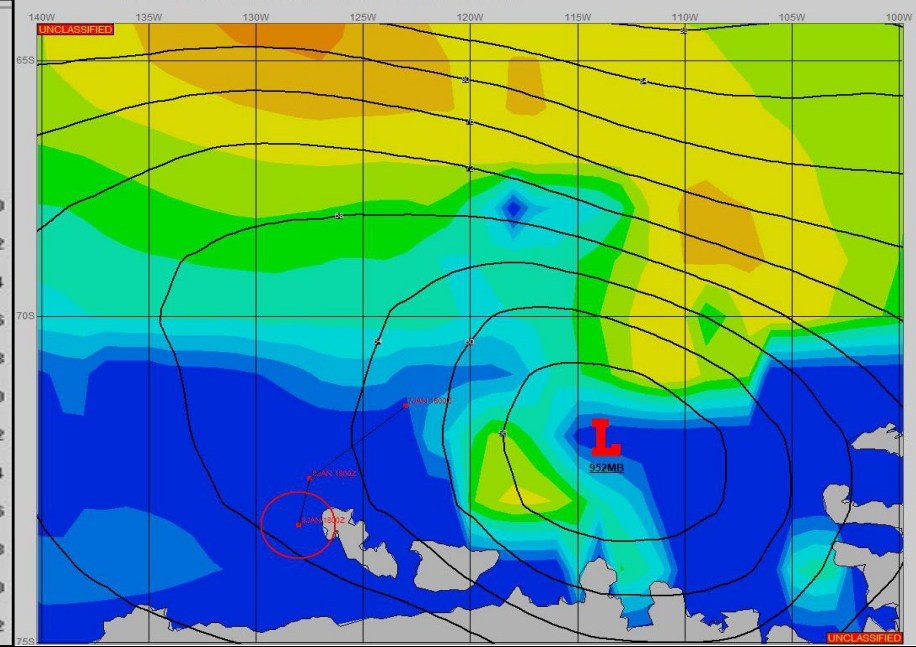
SURFACE ANALYSIS 8-Jan-2024 06Z



Seas (FT)



SURFACE FORECAST 9-Jan-2024 18Z



METSIT 06Z 8-Jan A 971MB LOW DEVELOPS NEAR 65S 135W OFF BROADER LOW PRESSURE TO THE WEST. THE 971MB LOW WILL DEEPEN TO 952MB NEAR 72S 114W BY 09/1800Z, THEN BEGIN TO FILL THROUGH THE END OF THE PERIOD. EXPECT REDUCED VISIBILITY IN FOG AND PRECIPITATION, AND INCREASING WIND SPEEDS AS THE LOW DEEPENS. CONDITIONS WILL IMPROVE FROM APPROXIMATELY 09/1800Z AS THE PRESSURE GRADIENT FLOW FROM THE LOW BECOMES DRIER AND OFF-CONTINENT.

FORECASTER NOTES WINDS MAY DIFFER FROM THOSE FORECAST DUE TO FUNNELING/SHELTERING EFFECTS OF ISLANDS.

VALID TIME	8-Jan 12Z	8-Jan 18Z	9-Jan 00Z	9-Jan 06Z	9-Jan 12Z	9-Jan 18Z	10-Jan 00Z	10-Jan 06Z
SKY CONDITION	CLOUDY	CLOUDY	CLOUDY	CLOUDY	CLOUDY	CLOUDY	MOSTLY CLOUDY	MOSTLY CLOUDY
WEATHER	SNOW & FOG	SNOW & FOG	SNOW & FOG	SNOW & FOG	SNOW & FOG	FOG	NONE	NONE
VISIBILITY (NM)	<1/2	<1/2	1/2 - 1	1/2 - 1	<1/2	1 - 3	UNRESTRICTED	UNRESTRICTED
SFC WINDS (DIR & KTS)	NE 20-25 GUST 30	NE 20-25 GUST 30	NE 15-20 GUST 25	E 25-30 GUST 35	SE 20-25 GUST 30	SW 10-15	SW 15-20 GUST 25	SW 15-20 GUST 25
SFC MAX/MIN (°C)	0/-2				-1/-3			
SST RANGE (°C)	-1/-2				-1/-2			
SEAS (DIR & FT)	N 0-1	N 0-2	N 0-1	N 0-1	N 0-1	N 0-1	N 0-1	N 0-1
ICE ACCRETION	LIGHT	LIGHT	LIGHT	LIGHT	LIGHT	LIGHT	LIGHT	LIGHT