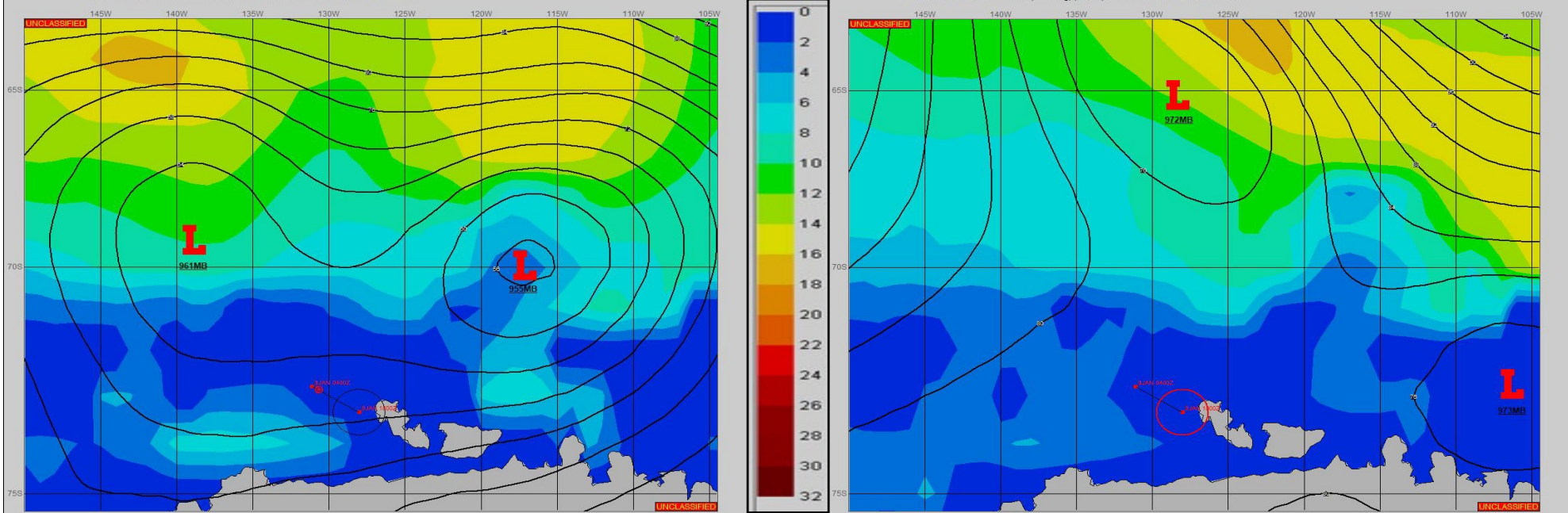


SURFACE ANALYSIS 9-Jan-2024 06Z

Seas (FT)

SURFACE FORECAST 10-Jan-2024 18Z



METSIT 06Z 9-Jan 955MB LOW NEAR 70S 117W TO DEEPEN TO 952MB NEAR 72S 114W BY 09/2100Z, THEN BEGIN TO FILL AND MOVE EAST. THE EARLY DEEPENING MAY BRING NEAR GALE WINDS FROM THE SOUTHEAST UNDER THE INCREASING PRESSURE GRADIENT. WIND SPEEDS WILL EASE BUT REMAIN MODERATE TO FRESH THROUGH APPROXIMATELY 10/1800Z, THEN FURTHER EASE. EXPECT PERIODS OF REDUCED VISIBILITY IN FOG.

FORECASTER NOTES WINDS MAY DIFFER FROM THOSE FORECAST DUE TO FUNNELING/SHELTERING EFFECTS OF ISLANDS.

VALID TIME	9-Jan 12Z	9-Jan 18Z	10-Jan 00Z	10-Jan 06Z	10-Jan 12Z	10-Jan 18Z	11-Jan 00Z	11-Jan 06Z
SKY CONDITION	CLOUDY	CLOUDY	CLOUDY	MOSTLY CLOUDY	CLOUDY	CLOUDY	CLOUDY	CLOUDY
WEATHER	FOG	FOG	NONE	NONE	FOG	FOG	FOG	FOG
VISIBILITY (NM)	<1/2	1 - 3	UNRESTRICTED	UNRESTRICTED	1 - 3	1 - 3	1 - 3	1 - 3
SFC WINDS (DIR & KTS)	SE 20-25 GUST 30	S 10-15	SW 15-20	SW 10-15	SW 15-20	SW 10-15	WSW 5-10	VRB 5
SFC MAX/MIN (°C)	0/-2				-1/-3			
SST RANGE (°C)	-1/-2				-1/-2			
SEAS (DIR & FT)	N 0-1	N 0-1	N 0-1	N 0-1	N 0-1	N 0-1	N 0-1	N 0-1
ICE ACCRETION	LIGHT	LIGHT	LIGHT	LIGHT	LIGHT	LIGHT	LIGHT	LIGHT