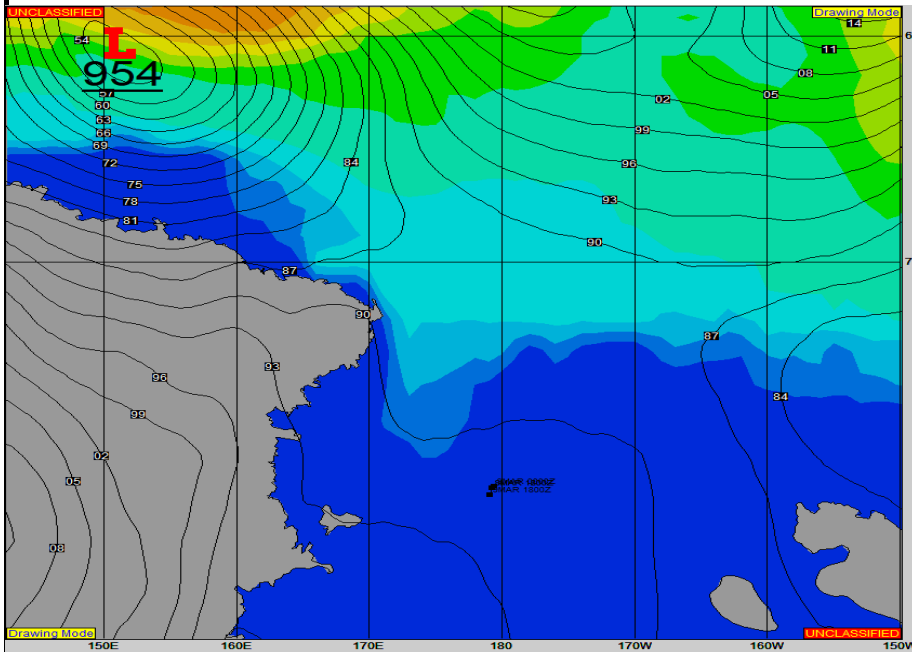


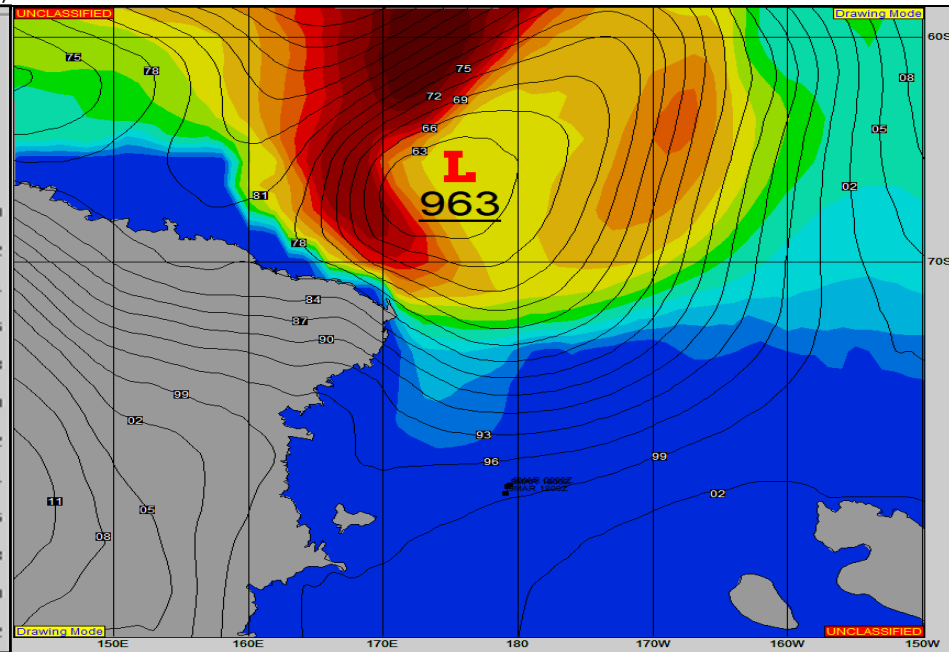
SURFACE ANALYSIS 9-Mar-2024 18Z



Seas (FT)



SURFACE FORECAST 11-Mar-2024 06Z



METSIT 21Z 9-Mar High pressure will dominate the area for the 10th, keeping winds fairly light with no precipitation. A strong low will begin to move in from the north on the 11th. Winds speeds will increase throughout the day on the 11th, reaching severe gusts at the end of the day. Heavy snowfall will begin at the end of the forecast period as the low continues its movement to the south.

FORECASTER NOTES MCMURDO STATION WINTER OPERATIONS ARE IN EFFECT. WEAX SUPPORT WILL BE DONE BY THE MCMURDO STATION WEATHER OFFICE AND ISSUED BY 2100Z. SEE CONTACT INFO BELOW.

VALID TIME	9-Mar 21Z	10-Mar 06Z	10-Mar 12Z	10-Mar 18Z	11-Mar 00Z	11-Mar 06Z	11-Mar 12Z	11-Mar 18Z
SKY CONDITION	MOSTLY CLOUDY	MOSTLY CLOUDY	MOSTLY CLOUDY	PARTLY CLOUDY	CLOUDY	CLOUDY	CLOUDY	CLOUDY
WEATHER	FOG	FOG	FOG	FOG	NONE	NONE	NONE	SNOW
VISIBILITY (NM)	1 - 3	1 - 3	1 - 3	2 - 4	UNRESTRICTED	UNRESTRICTED	UNRESTRICTED	1 - 3
SFC WINDS (DIR & KTS)	S 10-15	S 10-15	S 10-15	S 10-15	SE 10-15 GUST 20	SE 10-15 GUST 20	SE 15-20 GUST 30	SE 15-25 GUST 45
SFC MAX/MIN (°C)	-8/-15				-14/-18			
SST RANGE (°C)	-1/-2				-1/-2			
SEAS (DIR & FT)	N 0-3	N 0-3	N 0-3	N 0-3	N 0-3	N 0-3	N 4-6	N 4-6
ICE ACCRETION	MODERATE	MODERATE	HEAVY	HEAVY	HEAVY	HEAVY	HEAVY	HEAVY