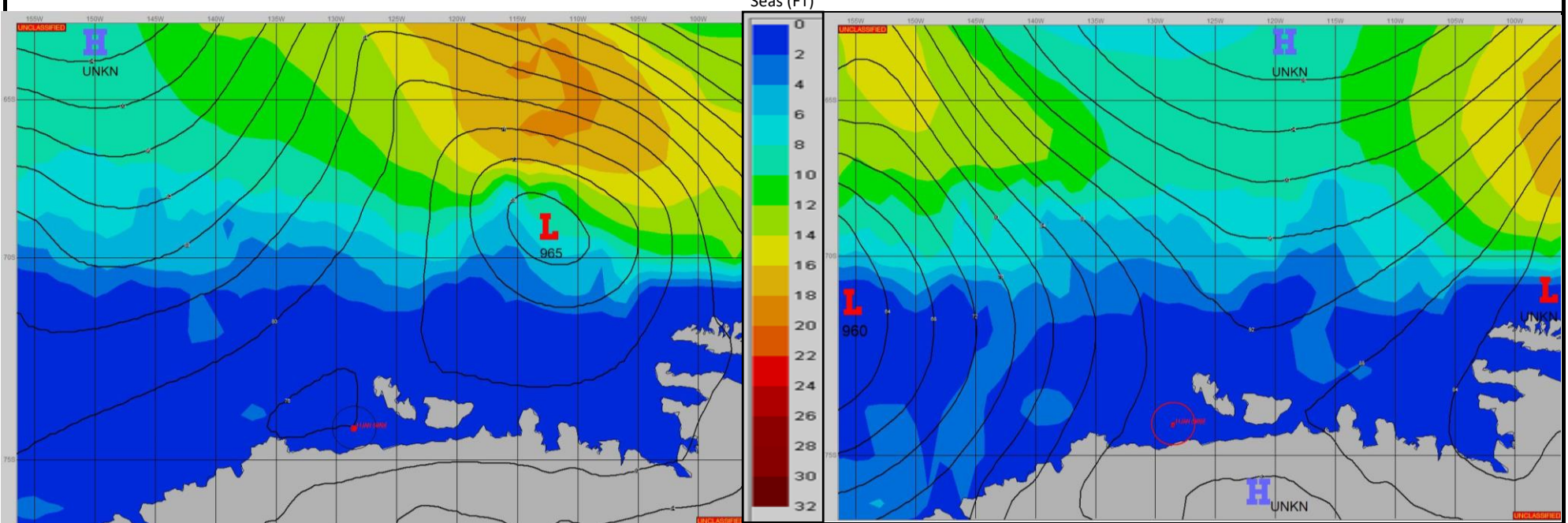


SURFACE ANALYSIS 11-Jan-2024 06Z

SURFACE FORECAST 12-Jan-2024 18Z



METSIT 06Z 11-Jan A 965MB LOW NEAR 69S 108W MOVES EAST AS A RIDGE OF HIGH PRESSURE STRENGTHENS FROM THE NORTH. INDICATIONS ARE FOR LIGHT WINDS WITH A WEAK PRESSURE GRADIENT AND FAVORABLE CONDITONS THROUGH THE FIRST HALF OF THE FORECAST PERIOD. EXPECT A 960MB LOW TO MOVE IN FROM THE WEST DURING THE SECOND HALF OF THE PERIOD CAUSING A TIGHTENING OF THE PRESSURE GRADIENT AND GRADUALLY INCREASING WINDS WITH GUSTS UP TO 30KT AND VISIBILITY REDUCED TO LESS THAN 1NM DUE TO PRECIPIATION AFTER 13/00Z.

FORECASTER NOTES WINDS MAY DIFFER FROM THOSE FORECAST DUE TO FUNNELING/SHELTERING EFFECTS OF ISLANDS.

VALID TIME	11-Jan 12Z	11-Jan 18Z	12-Jan 00Z	12-Jan 06Z	12-Jan 12Z	12-Jan 18Z	13-Jan 00Z	13-Jan 06Z
SKY CONDITION	CLOUDY	CLOUDY	MOSTLY CLOUDY	PARTLY CLOUDY	MOSTLY CLOUDY	CLOUDY	CLOUDY	CLOUDY
WEATHER	FOG	FOG	FOG	FOG	FOG	FOG	SNOW & FOG	SNOW & FOG
VISIBILITY (NM)	1 - 3	1 - 3	2 - 4	3 - 5	1 - 3	2 - 4	1/2 - 1	<1/2
SFC WINDS (DIR & KTS)	ENE 5-10	E 5	VRB 5	W 5-10	W 5	E 5-10	E 10-15 GUST 20	ENE 20-25 GUST 30
SFC MAX/MIN (°C)	-2/-4				-2/-4			
SST RANGE (°C)	-1/-2				-1/-2			
SEAS (DIR & FT)	NE 0-1	NW 0-1	NW 0-1	NW 0-1	NW 0-1	NW 0-1	N 0-1	NNE 1-2
ICE ACCRETION	LIGHT	LIGHT	LIGHT	LIGHT	LIGHT	LIGHT	LIGHT	LIGHT