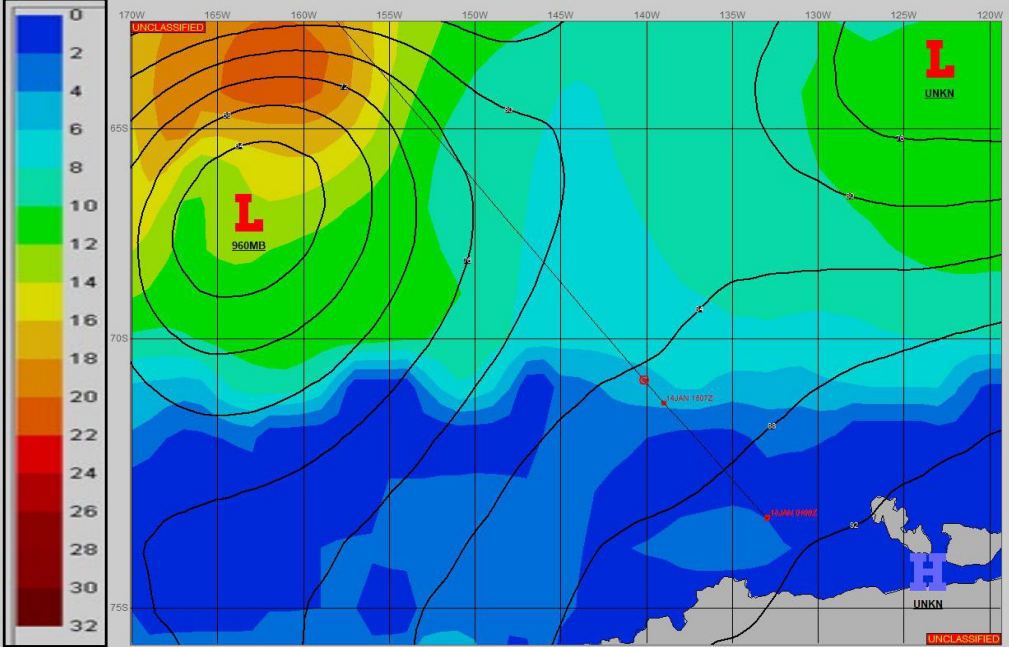
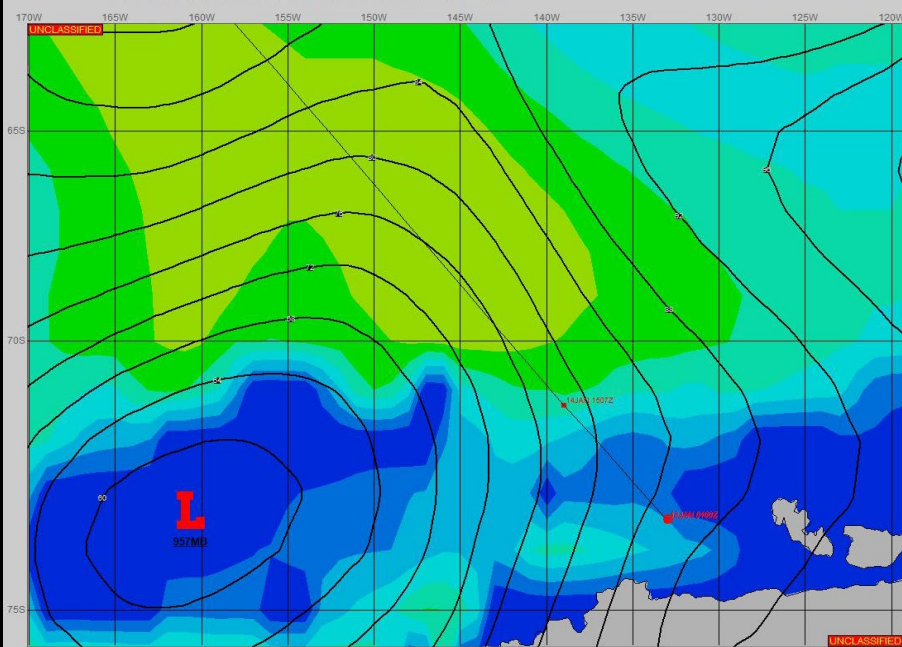


SURFACE ANALYSIS 13-Jan-2024 06Z

Seas (FT)

SURFACE FORECAST 14-Jan-2024 18Z



METSIT 06Z 13-Jan 957MB LOW NEAR 73S 160W MOVING A FRONTAL BOUNDARY ACROSS OPERATIONS AREA EARLY IN THE FORECAST PERIOD. THIS LOW WILL CONTINUE TO FILL AND MOVE SOUTHWEST. VISIBILITY WILL REMAIN POOR THROUGH 13/1800Z IN PRECIPITATION AND FOG. PRECIPITATION SHOULD END BY 13/1800Z. EXPECT VARIED VISIBILITY IN FOG UNDER CLOUDY SKIES AS THE SHIP MOVES NORTHWEST. A 959MB LOW 65S 171W AT 14/0000Z WILL MOVE SOUTHEAST AND FILL TO 960MB NEAR 67S 163W BY 14/1800Z, AND CONTINUE TO FILL MOVING EAST THROUGH THE END OF THE PERIOD.

FORECASTER NOTES

VALID TIME	13-Jan 12Z	13-Jan 18Z	14-Jan 00Z	14-Jan 06Z	14-Jan 12Z	14-Jan 18Z	15-Jan 00Z	15-Jan 06Z
SKY CONDITION	CLOUDY	CLOUDY	CLOUDY	CLOUDY	CLOUDY	CLOUDY	CLOUDY	CLOUDY
WEATHER	SNOW & FOG	SNOW & FOG	FOG	FOG	FOG	FOG	FOG	FOG
VISIBILITY (NM)	<1/2	<1/2	1/2 - 1	1 - 3	1 - 3	1/2 - 1	1/2 - 1	2 - 4
SFC WINDS (DIR & KTS)	NE 15-20 GUST 25	NE 15-20	N 10-15	VRB 5	E 5-10	E 10-15	NE 10-15	NE 10-15
SFC MAX/MIN (°C)	-1/-2				1/-2			
SST RANGE (°C)	-1/-2				0/-2			
SEAS (DIR & FT)	NE 2-4	NE 1-3	N 1-3	N 0-2	NW 1-3	NW 4-6	NW 4-6	NW 5-7
ICE ACCRETION	LIGHT	LIGHT	LIGHT	LIGHT	LIGHT	LIGHT	LIGHT	LIGHT