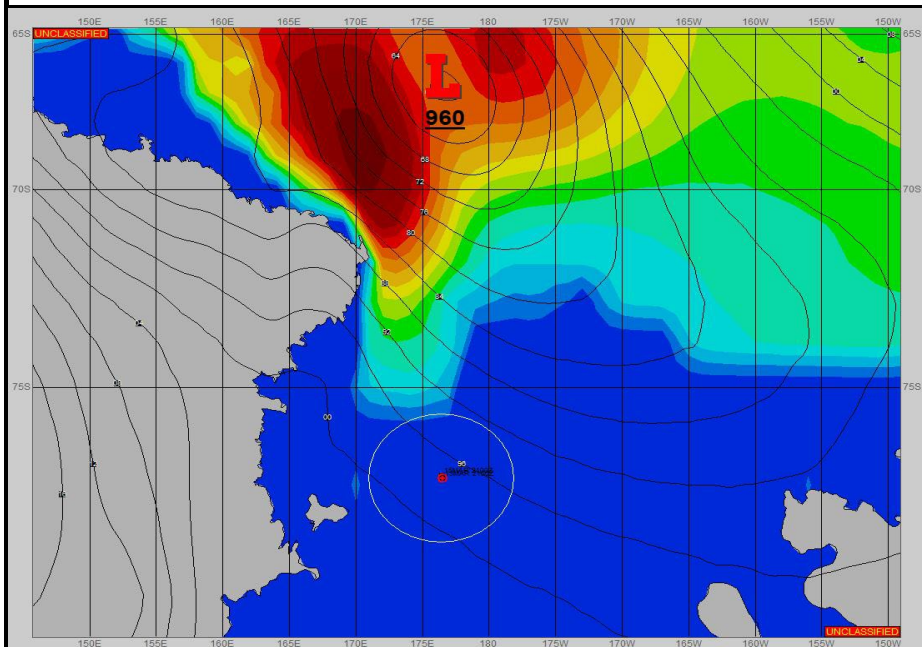
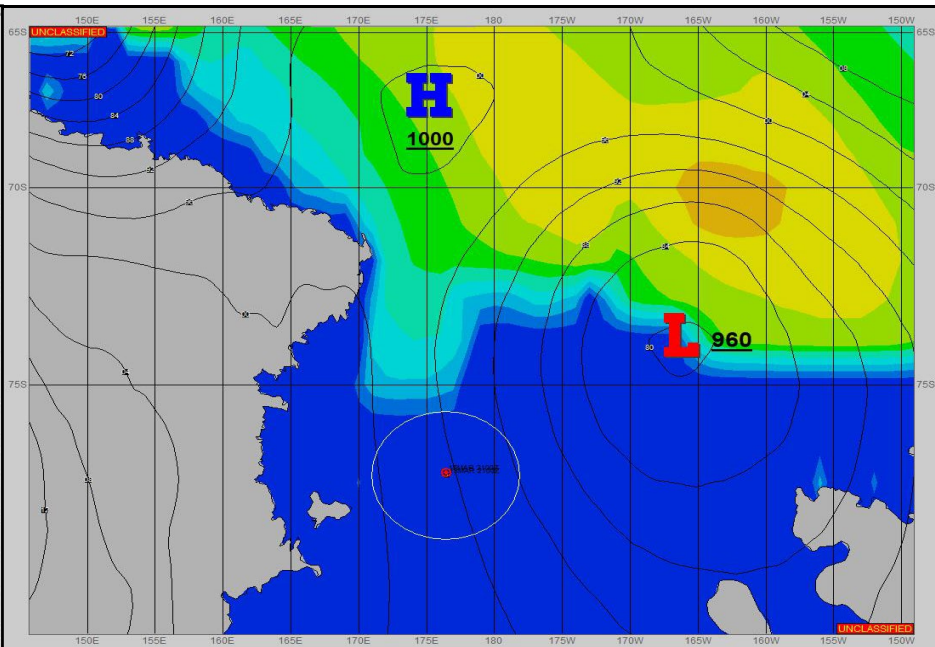


**SURFACE ANALYSIS 13-Mar-2024 18Z**



Seas (FT)

**SURFACE FORECAST 15-Mar-2024 06Z**



**METSIT 21Z 13-Mar** A strong low pressure system is moving in from the north and weakening as it tracks southeastward. This low is forecast to help generate strong winds, snow, and reduced visibility until around 12z tomorrow. Conditions are expected to improve through the remaining portion of the forecast period.

**FORECASTER NOTES**

VALID TIME	13-Mar 21Z	14-Mar 06Z	14-Mar 12Z	14-Mar 18Z	15-Mar 00Z	15-Mar 06Z	15-Mar 12Z	15-Mar 18Z
<b>SKY CONDITION</b>	MOSTLY CLOUDY	MOSTLY CLOUDY	CLOUDY	CLOUDY	CLOUDY	CLOUDY	CLOUDY	PARTLY CLOUDY
<b>WEATHER</b>	NONE	NONE	SNOW & FOG	SNOW & FOG	SNOW & FOG	SNOW & FOG	FOG	NONE
<b>VISIBILITY (NM)</b>	UNRESTRICTED	UNRESTRICTED	2 - 4	2 - 4	1 - 3	1 - 3	2 - 4	4 - 6
<b>SFC WINDS (DIR &amp; KTS)</b>	SE 15-20 GUST 30	S 25-30 GUST 40	S 25-30 GUST 40	S 25-30 GUST 40	S 25-30 GUST 40	S 20-25 GUST 35	S-SW 15-20 GUST 30	SW 10-15 GUST 20
<b>SFC MAX/MIN (°C)</b>	-18/-20				-19/-21			
<b>SST RANGE (°C)</b>	-1/-2				-1/-2			
<b>SEAS (DIR &amp; FT)</b>	N 0-2	N 0-2	N 0-2	N 0-2	N 0-2	N 0-2	N 0-2	N 0-2
<b>ICE ACCRETION</b>	EXTREME	EXTREME	EXTREME	EXTREME	EXTREME	EXTREME	EXTREME	EXTREME