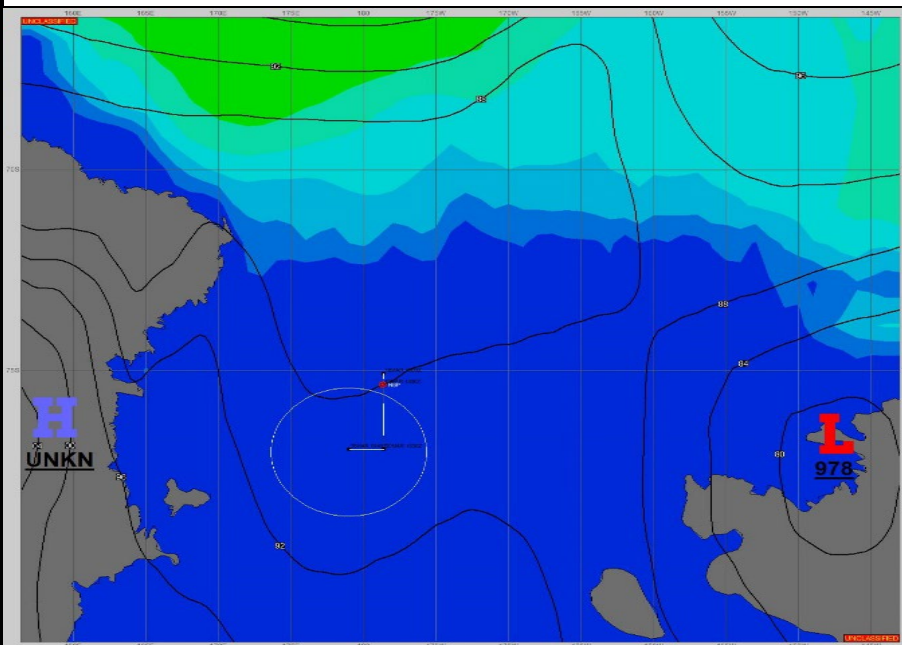
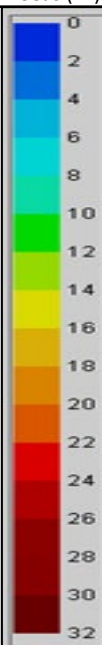


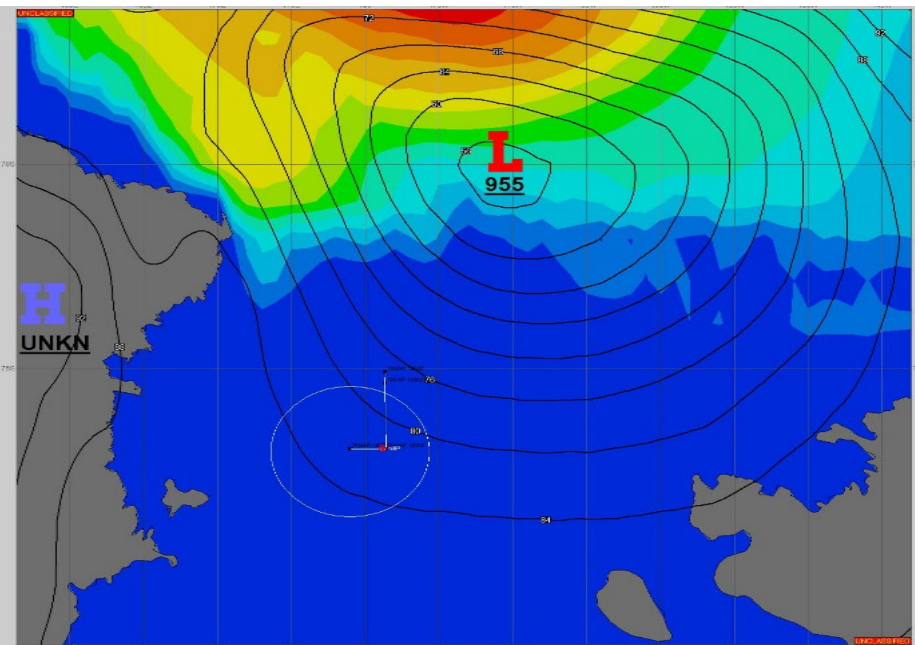
SURFACE ANALYSIS 19-Mar-2024 18Z



Seas (FT)



SURFACE FORECAST 21-Mar-2024 06Z



METSIT 21Z 19-Mar The high pressure sitting in the region causing patchy dense fog and light winds is expected to remain until around 00Z on the 21st. After, an intensifying low pressure system is forecasted to push in causing widespread low visibility and gusty winds through out the remainder of the forecast period.

FORECASTER NOTES

VALID TIME	19-Mar 21Z	20-Mar 06Z	20-Mar 12Z	20-Mar 18Z	21-Mar 00Z	21-Mar 06Z	21-Mar 12Z	21-Mar 18Z
SKY CONDITION	CLOUDY	MOSTLY CLOUDY	PARTLY CLOUDY	MOSTLY CLOUDY	MOSTLY CLOUDY	CLOUDY	CLOUDY	CLOUDY
WEATHER	FOG	NONE	NONE	FOG	FOG	FOG	FOG	FOG
VISIBILITY (NM)	1 - 3	UNRESTRICTED	UNRESTRICTED	3 - 5	1 - 3	1 - 3	1 - 3	1 - 3
SFC WINDS (DIR & KTS)	NE 5-10	NW 5-10	W 5-10	VRB	VRB	SE 10-15 GUST 20	SE 15-20 GUST 25	SE 15-20 GUST 25
SFC MAX/MIN (°C)	-19/-21				-20/-22			
SST RANGE (°C)	-1/-2				-1/-2			
SEAS (DIR & FT)	N 0-2	N 0-2	N 0-2	N 0-2	N 0-2	N 0-2	N 0-2	N 0-2
ICE ACCRETION	HEAVY	HEAVY	HEAVY	MODERATE	HEAVY	EXTREME	EXTREME	EXTREME