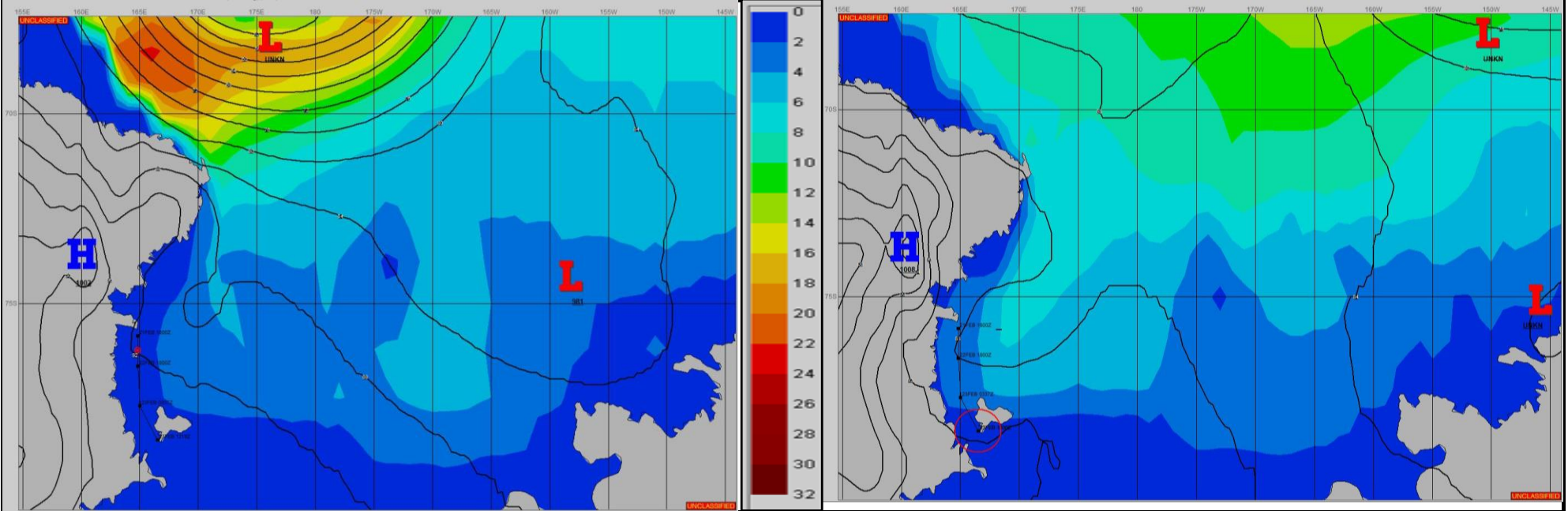


SURFACE ANALYSIS 22-Feb-2024 06Z

Seas (FT)

SURFACE FORECAST 23-Feb-2024 18Z



METSIT 06Z 22-Feb A HIGH PRESSURE CENTER ON THE PLATEAU TO THE NORTHWEST CONTINUES TO STRENGTHEN ALLOWING FOR GLACIER OUTFLOW. A LOW PRESSURE SYSTEM TRACKS TO THE EAST, NORTH OF CAPE ADARE, DRAWING WINDS FROM THE SOUTH AND LEAVING BEHIND A SURFACE TROUGH TO THE NORTH OF ROSS ISLAND THROUGH THE PERIOD. EXPECT INCREASING WINDS WITH CLOUDY SKIES AND LIGHT PRECIPITATION NORTH OF ROSS ISLAND THEN FAVORABLE CONDITIONS WITH COLDER TEMPERATURES UPON ENTERING MCMURDO SOUND AND ARRIVING AT MCMURDO STATION.

FORECASTER NOTES THIS WILL BE THE FINAL WEAX ISSUED FOR THIS LEG OF THE VOYAGE. PLEASE REFER TO THE MCMURDO DAILY FORECAST WHILE IN THE MCMURDO AREA. WE WILL RECOMMENCE SHIP FORECASTS UPON RECEIPT OF A MOVREP. ENJOY YOUR STAY AT MCMURDO STATION!

VALID TIME	22-Feb 12Z	22-Feb 18Z	23-Feb 00Z	23-Feb 06Z	23-Feb 12Z	23-Feb 18Z	24-Feb 00Z	24-Feb 06Z
SKY CONDITION	CLOUDY	CLOUDY	MOSTLY CLOUDY					
WEATHER	SNOW & FOG	SNOW & FOG	NONE	MCMURDO STATION	MCMURDO STATION	MCMURDO STATION	MCMURDO STATION	MCMURDO STATION
VISIBILITY (NM)	1 - 3	2 - 4	UNRESTRICTED					
SFC WINDS (DIR & KTS)	ESE 10-15	E 10-15	SSE 10-15					
SFC MAX/MIN (°C)	-7/-12							
SST RANGE (°C)	-1/-2							
SEAS (DIR & FT)	E 1-2	E 1-2	ENE 0-1					
ICE ACCRETION	MODERATE	MODERATE	MODERATE					