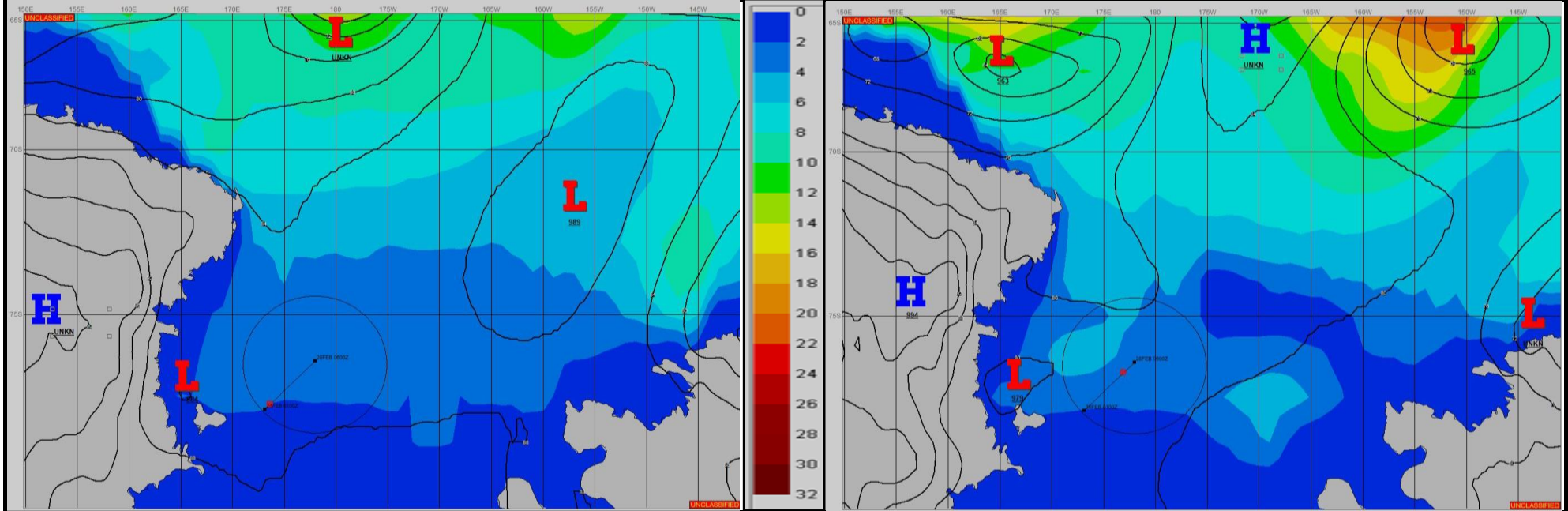


**SURFACE ANALYSIS 26-Feb-2024 06Z**

**SURFACE FORECAST 27-Feb-2024 18Z**



**METSIT 06Z 26-Feb** A 984MB LOW PRESSURE CIRCULATION TO THE NORTH OF ROSS ISLAND REMAINS STATIONARY AND DEEPENS CAUSING PERIODS OF LOW VISIBILITY DUE TO SNOW AND FOG WITH INCREASING WINDS FROM THE SOUTHEAST BY THE END OF THE FORECAST PERIOD. INDICATIONS ARE FOR TEMPERATURES TRENDING COLDER DURING THE FIRST HALF OF THE FORECAST THEN LEVELNG OFF AND GRADUALLY WARMING BY 28/00Z AS LOW CLOUD COVER INCREASES.

**FORECASTER NOTES**

VALID TIME	26-Feb 12Z	26-Feb 18Z	27-Feb 00Z	27-Feb 06Z	27-Feb 12Z	27-Feb 18Z	28-Feb 00Z	28-Feb 06Z
SKY CONDITION	PARTLY CLOUDY	MOSTLY CLOUDY	MOSTLY CLOUDY	CLOUDY	MOSTLY CLOUDY	MOSTLY CLOUDY	CLOUDY	CLOUDY
WEATHER	NONE	SNOW & FOG	SNOW & FOG	SNOW & FOG	SNOW & FOG	SNOW & FOG	SNOW & FOG	SNOW & FOG
VISIBILITY (NM)	UNRESTRICTED	2 - 4	1 - 3	1 - 3	1 - 3	1 - 3	1-3	1/2 - 1
SFC WINDS (DIR & KTS)	NE 10-15	NW 10-15	SW 15-20	SW 15-20	SSW 10-15	S 5-10	SE 5-10	SE 15-20 GUST 25
SFC MAX/MIN (°C)	-6/-12				-08/-11			
SST RANGE (°C)	-1/-2				-1/-2			
SEAS (DIR & FT)	NNW 1-3	N 2-4	N 3-5	N 3-5	N 2-4	N 2-4	NNW 2-4	NNW 3-5
ICE ACCRETION	MODERATE	MODERATE	MODERATE	MODERATE	MODERATE	MODERATE	HEAVY	HEAVY