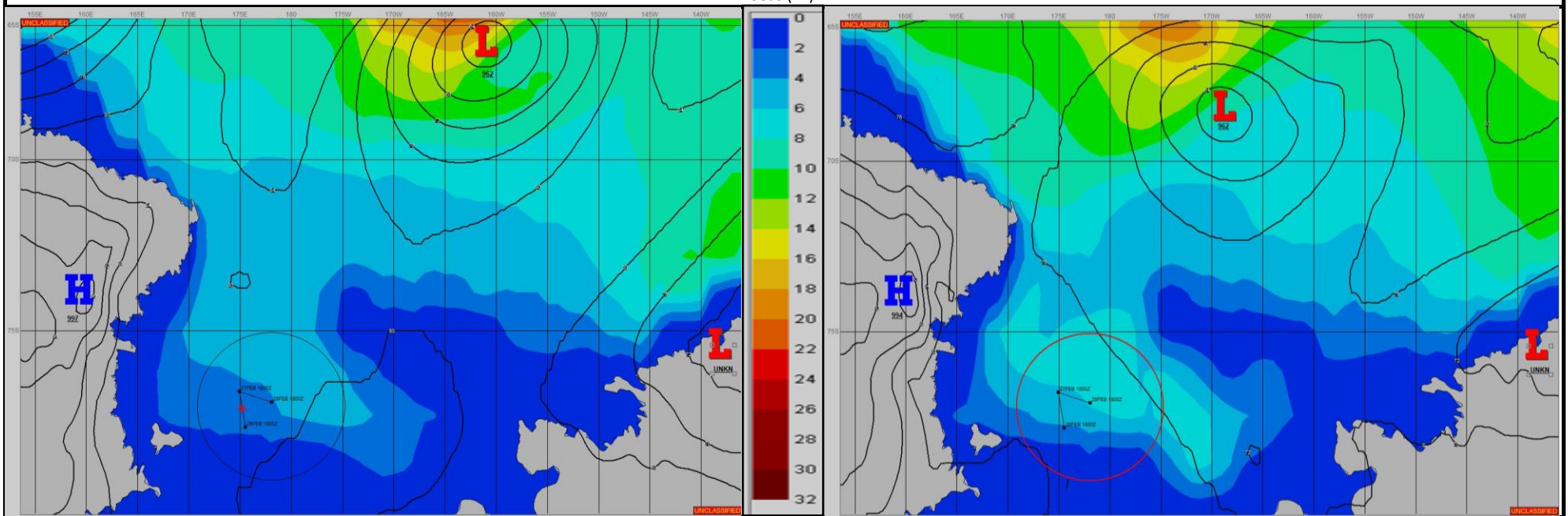


SURFACE ANALYSIS 27-Feb-2024 06Z

SURFACE FORECAST 28-Feb-2024 18Z



METSIT 06Z 27-Feb A 962MB LOW PRESSURE CENTER NEAR 66S 161W MOVES SOUTHWARD INTO THE ROSS SEA WITH A HIGH PRESSURE RIDGE CENTERED OVER THE CONTINENT TO WEST. EXPECT GENERALLY FAVORABLE CONDITIONS TO CONTINUE WITH PERIODS OF LIGHT SNOW AND FOG THROUGH THE FORECAST PERIOD AS WINDS REMAIN STEADY AND PREDOMINANTLY SOUTHEASTERLY.

FORECASTER NOTES

VALID TIME	27-Feb 12Z	27-Feb 18Z	28-Feb 00Z	28-Feb 06Z	28-Feb 12Z	28-Feb 18Z	29-Feb 00Z	29-Feb 06Z
SKY CONDITION	MOSTLY CLOUDY	MOSTLY CLOUDY	MOSTLY CLOUDY	MOSTLY CLOUDY	CLOUDY	CLOUDY	MOSTLY CLOUDY	MOSTLY CLOUDY
WEATHER	SNOW & FOG	SNOW & FOG	SNOW & FOG	SNOW & FOG	SNOW & FOG	SNOW & FOG	SNOW & FOG	SNOW & FOG
VISIBILITY (NM)	2 - 4	3 - 5	3 - 5	2 - 4	3 - 5	1 - 3	2 - 4	3 - 5
SFC WINDS (DIR & KTS)	S 10-15	SE 10-15	SE 10-15	SE 15-20	SE 10-15	SE 15-20	SE 10-15	SE 10-15
SFC MAX/MIN (°C)	-10/-13				-10/-13			
SST RANGE (°C)	-1/-2				-1/-2			
SEAS (DIR & FT)	N 2-4	N 2-4	N 2-4	N 3-5	SE 4-6	SE 4-6	S 3-5	S 3-5
ICE ACCRETION	MODERATE	MODERATE	MODERATE	HEAVY	HEAVY	HEAVY	MODERATE	MODERATE