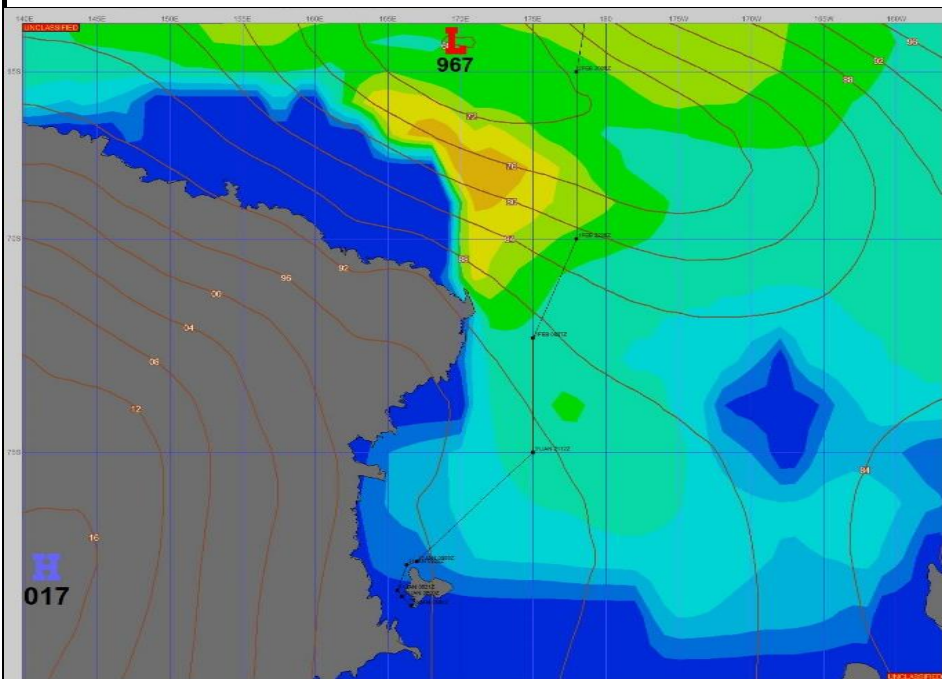


Ref A: MOVREP 29 JAN 2024

Ref B:

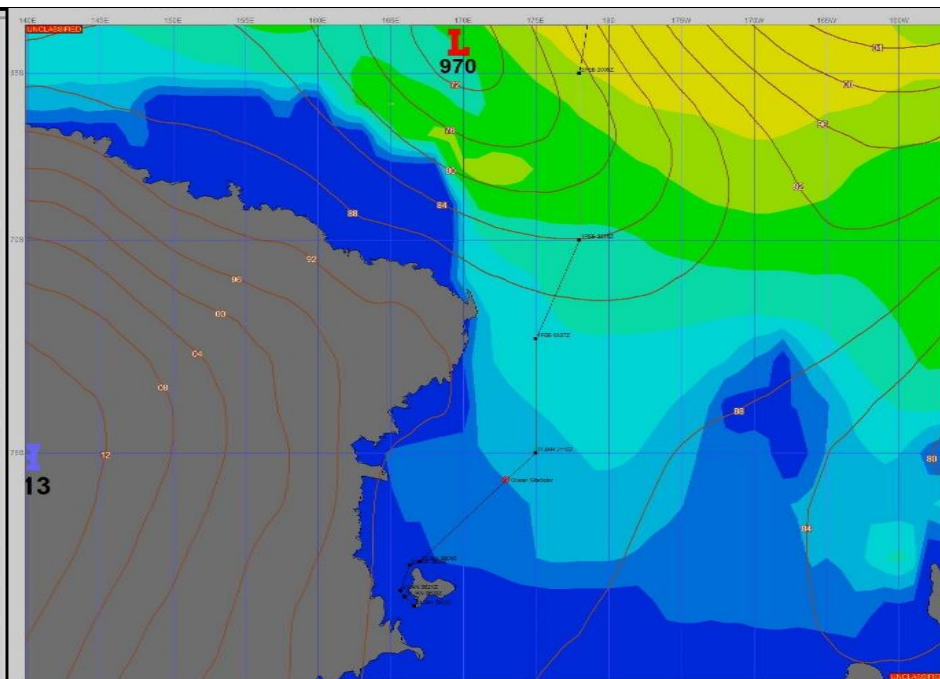
SURFACE ANALYSIS 30-Jan-2024 06Z



Seas (FT)



SURFACE FORECAST 31-Jan-2024 18Z



METSIT 06Z 30-Jan A 967MB MIGRATORY LOW LOCATED 63°S, 170°E TRANSITS EASTWARD OVER THE LOWER SOUTH OCEAN. A 1017MB HIGH OVER EAST ANTARCTICA RIDGES OVER THE ROSS SEA. EXPECT MOSTLY CLOUDY TO CLOUDY SKIES WITH PERIODS OF LIGHT SNOW AND A FRESH TO STRONG BREEZE AS YOUR VESSEL DEPARTS. SKIES SHOULD CLEAR OUT AS YOU SET THE NORTHEAST COURSE WITH A LIGHT TO GENTLE BREEZE AND SLIGHT SEAS.

FORECASTER NOTES

VALID TIME	30-Jan 12Z	30-Jan 18Z	31-Jan 00Z	31-Jan 06Z	31-Jan 12Z	31-Jan 18Z	1-Feb 00Z	1-Feb 06Z
SKY CONDITION			CLOUDY	MOSTLY CLOUDY	PARTLY CLOUDY	PARTLY CLOUDY	PARTLY CLOUDY	CLOUDY
WEATHER	IN PORT	IN PORT	SNOW	SNOW	FOG	FOG	NONE	FOG
VISIBILITY (NM)	MCMURDO	MCMURDO	4 - 6	4 - 6	2 - 4	4 - 6	UNRESTRICTED	1 - 3
SFC WINDS (DIR & KTS)			SE 15-20 GUST 30	SE 10-15	NE 5-10	VRB 0-5	SE 5-10	SE 20-25 GUST 35
SFC MAX/MIN (°C)	-3/-5			5/0				
SST RANGE (°C)	0/-1			0/-1				
SEAS (DIR & FT)			<1 IP, SE 0-2 OW	N 0-2	E 1-3	ESE 2-4	ESE 3-5	SE 5-7
ICE ACCRETION			NIL	LIGHT	LIGHT	LIGHT	LIGHT	LIGHT