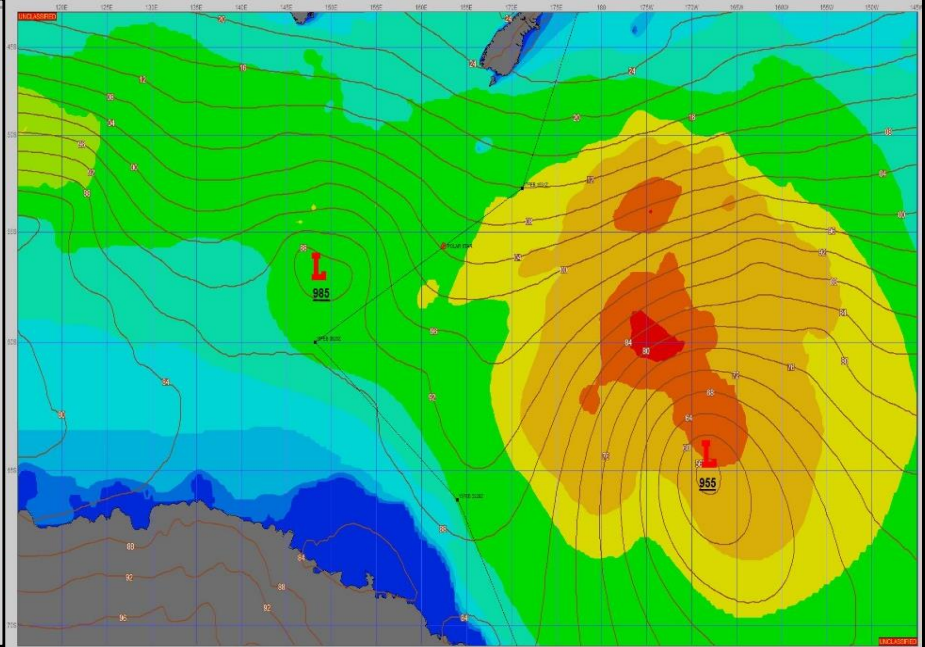
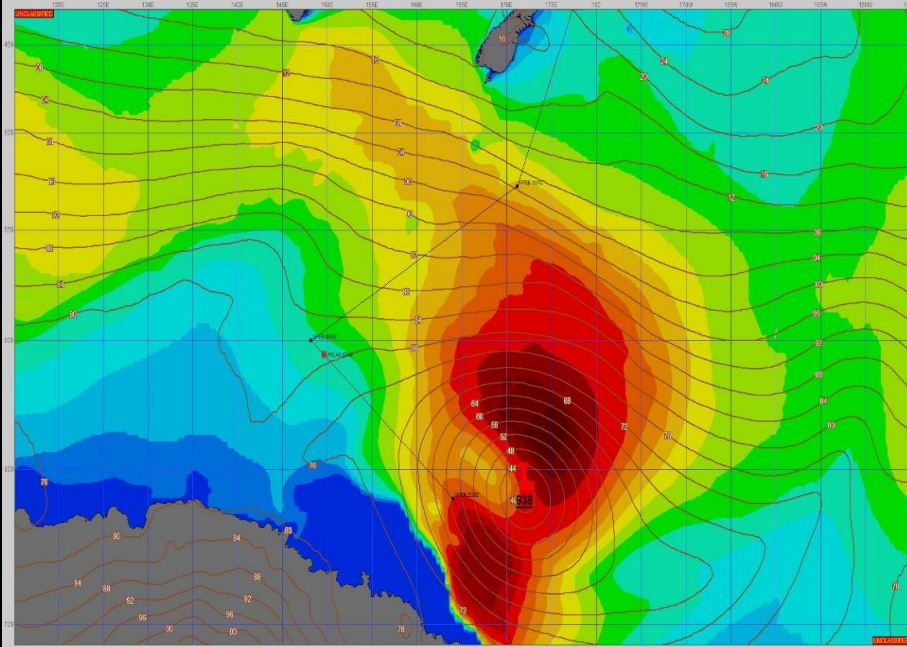


**SURFACE ANALYSIS 15-Feb-2024 06Z**

Seas (FT)

**SURFACE FORECAST 16-Feb-2024 18Z**



**METSIT 06Z 15-Feb**

A LOW AT 955MB IS PRESENT AT 172 E, 65 S TRACKING ESE. AS THIS LOW FILLS OVER THE NEXT 24 HOURS AND TRANSITS AWAY FROM THE ROUTE WAVE HEIGHTS AND WINDS ARE EXPECTED TO SLIGHTLY DECREASE NORTH OF 60S. FAIR WEATHER CONDITIONS ARE EXPECTED OVER THE NEXT 24 HOURS AS SHIP TRAVELS THROUGH AN AREA OF HIGHER PRESSURE. TOMORROW, A TROUGH TO THE WEST OF THE SHIP ROUTE IS EXPECTED TO DEVELOP INTO A WEAK LOW, PROVIDING SUPPORT GUSTY WINDS, SEA FOG, AND SPARSE RAINSHOWERS ALONG ROUTE.

**FORECASTER NOTES**

VALID TIME	15-Feb 12Z	15-Feb 18Z	16-Feb 00Z	16-Feb 06Z	16-Feb 12Z	16-Feb 18Z	17-Feb 00Z	17-Feb 06Z
SKY CONDITION	PARTLY CLOUDY	PARTLY CLOUDY	PARTLY CLOUDY	MOSTLY CLOUDY	PARTLY CLOUDY	MOSTLY CLOUDY	CLOUDY	CLOUDY
WEATHER	NONE	NONE	NONE	VCNTY RAIN	NONE	VCNTY RAIN	RAIN & FOG	RAIN & FOG
VISIBILITY (NM)	UNRESTRICTED	UNRESTRICTED	UNRESTRICTED	UNRESTRICTED	UNRESTRICTED	UNRESTRICTED	1 - 3	2 - 4
SFC WINDS (DIR & KTS)	W 10-20	W 5-10	NW 10-15	W 15-20 GUST 25	W 10-20	NW 10-15	W 10-15 GUST 20	W 15-20 GUST 25
SFC MAX/MIN (°C)	8/4				10/6			
SST RANGE (°C)	6/3				9/6			
SEAS (DIR & FT)	W 8-10	NW 8-10	W 8-10	W 10-12	W 10-12	W 11-13	NW 9-11	W 11-13
ICE ACCRETION	NIL	NIL	NIL	NIL	NIL	NIL	NIL	NIL

---