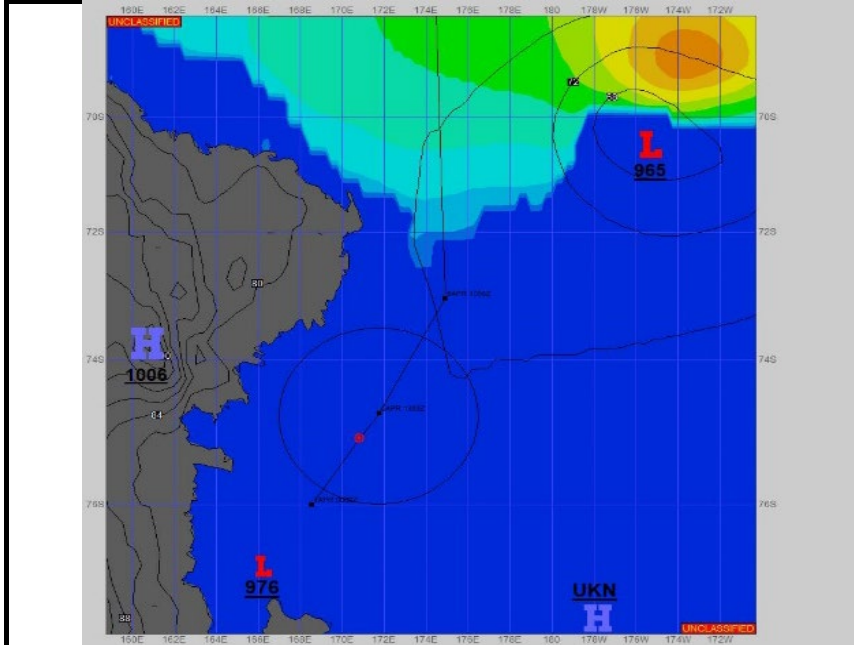


SURFACE ANALYSIS

4-Apr-2025

06Z

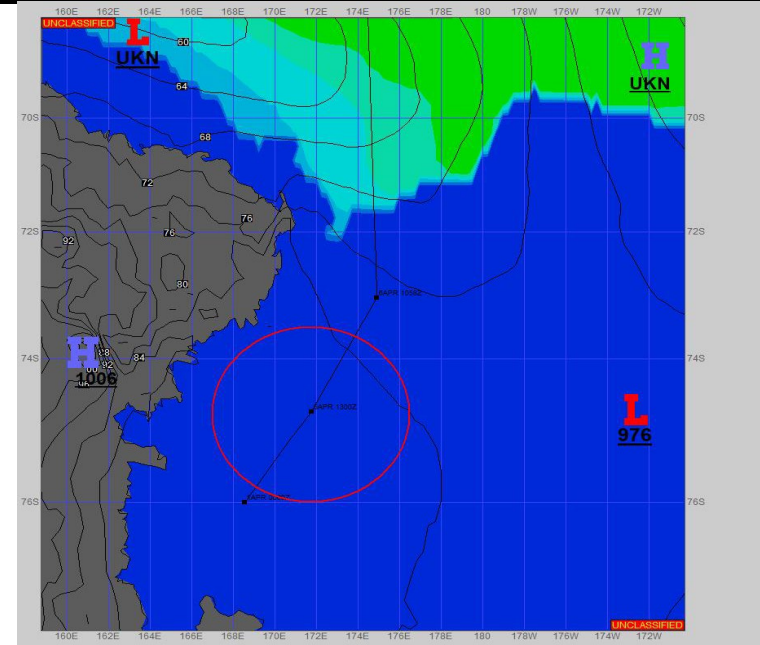
Seas (FT)



SURFACE FORECAST

5-Apr-2025

18Z



METSIT 06Z

4-Apr

High pressure over northern Victoria Land is weakening but will still support fair weather over the western MODLOC. Low pressure troughing into the Ross Sea will deepen, increasing cloudiness and snow over the eastern portion of your OPAREA.

FORECASTER NOTES

Winds may differ from those forecast due to funneling/sheltering effects of islands and katabatic winds off glaciers.

VALID TIME	4-Apr 12Z	4-Apr 18Z	5-Apr 00Z	5-Apr 06Z	5-Apr 12Z	5-Apr 18Z	6-Apr 00Z	6-Apr 06Z
SKY CONDITION	PARTLY CLOUDY	PARTLY CLOUDY	MOSTLY CLOUDY	MOSTLY CLOUDY	CLOUDY	MOSTLY CLOUDY	MOSTLY CLOUDY	MOSTLY CLOUDY
WEATHER	VCNTY FOG	VCNTY FOG	SNOW & FOG	SNOW & FOG	SNOW	SNOW	SNOW	SNOW
VISIBILITY (NM)	4 - 6	4 - 6	4 - 6	3 - 5	1 - 3	2 - 4	2 - 4	1 - 3
SFC WINDS (DIR & KTS)	VRB 7-12	SE 5-10	SW 7-13	SW 7-13	S 7-13	SSW 7-13	S 8-15 GUST 20	SW 10-15 GUST 25
SFC MAX/MIN (°C)	-14 / -23				-18 / -27			
SST RANGE (°C)	-1 / -2				-1 / -2			
SEAS (DIR & FT)	0 (ICE)	0 (ICE)	0 (ICE)	0 (ICE)	0 (ICE)	0 (ICE)	0 (ICE)	0 (ICE)
ICE ACCRETION	LIGHT	LIGHT	LIGHT	LIGHT	LIGHT	LIGHT	LIGHT	LIGHT