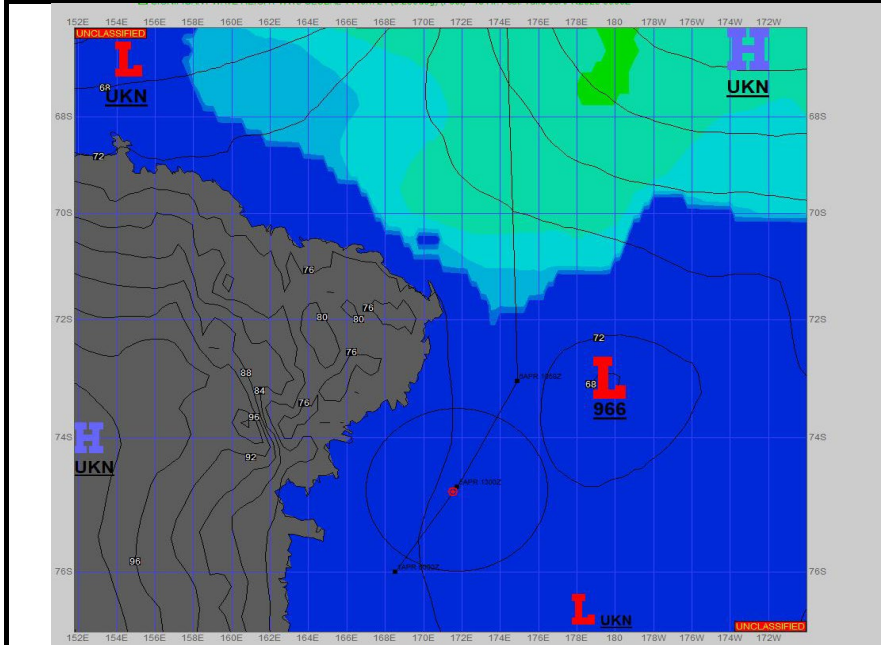


SURFACE ANALYSIS

5-Apr-2025

06Z

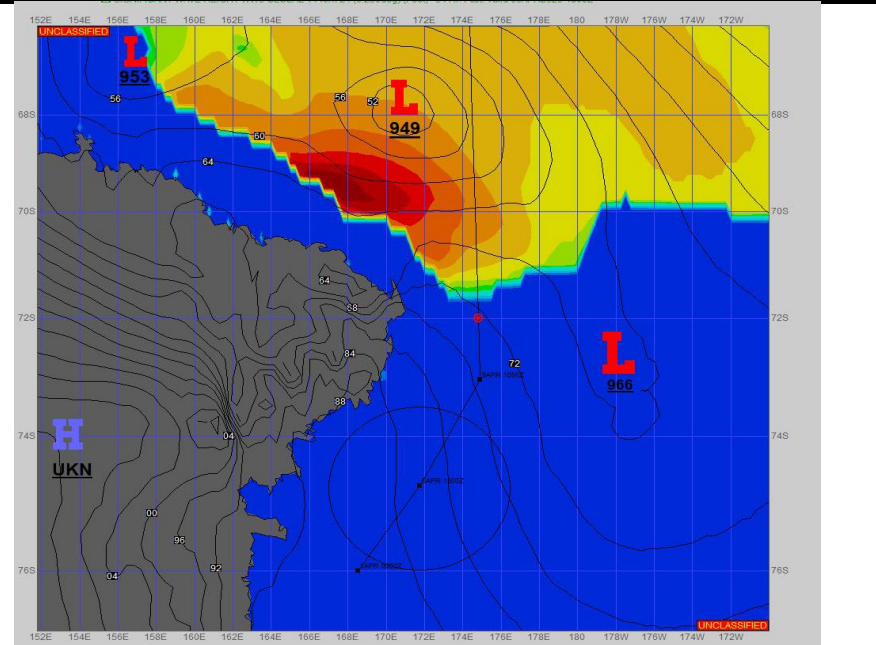
Seas (FT)



SURFACE FORECAST

6-Apr-2025

18Z



METSIT 06Z 5-Apr

High pressure is shifting west into the eastern Antarctic Plateau allowing multiple weak low pressure circulations associated with troughing into the central Ross Sea. In the outlook period, a strong low pressure system and associated fronts along the northern Antarctic coast will turn into the Ross Sea producing blizzard conditions as you begin your transit to the ice edge. Strong southerly winds will open the pack ice producing blowing spray and ice accumulation as you near the ice edge. Winds and seas are forecast to approach or exceed your limits as you enter open waters.

FORECASTER NOTES

Winds may differ from those forecast due to funneling/sheltering effects of islands and katabatic winds off glaciers.

VALID TIME	5-Apr 12Z	5-Apr 18Z	6-Apr 00Z	6-Apr 06Z	6-Apr 12Z	6-Apr 18Z	7-Apr 00Z	7-Apr 06Z
SKY CONDITION	PARTLY CLOUDY	MOSTLY CLOUDY	CLOUDY	CLOUDY	CLOUDY	CLOUDY	CLOUDY	CLOUDY
WEATHER	VCNTY FOG	VCNTY FOG	SNOW & FOG	SNOW	SNOW	SNOW	SNOW	SNOW
VISIBILITY (NM)	UNRESTRICTED	UNRESTRICTED	4 - 6	4 - 6	<1/2	<1/2	<1/2	<1/2
SFC WINDS (DIR & KTS)	SW 8-13 GUST 18	SW 8-13 GUST 18	SW 8-13 GUST 20	SSW 13-20 GUST 25	SSW 20-35 GUST 50	S 30-45 GUST 60	S 30-45 GUST 55	S 25-35 GUST 45
SFC MAX/MIN (°C)	-15 / -26				-9 / -27			
SST RANGE (°C)	-1 / -2				-1 / -2			
SEAS (DIR & FT)	0 (ICE)	0 (ICE)	0 (ICE)	0 (ICE)	2-4 (IN PACK ICE)	3-5 (IN PACK ICE)	S 12-15	S 14-17
ICE ACCRETION	LIGHT	LIGHT	LIGHT	LIGHT	MODERATE	MODERATE	HEAVY	MODERATE