

Ref A: EMAIL MOVREP 6-APR-2025

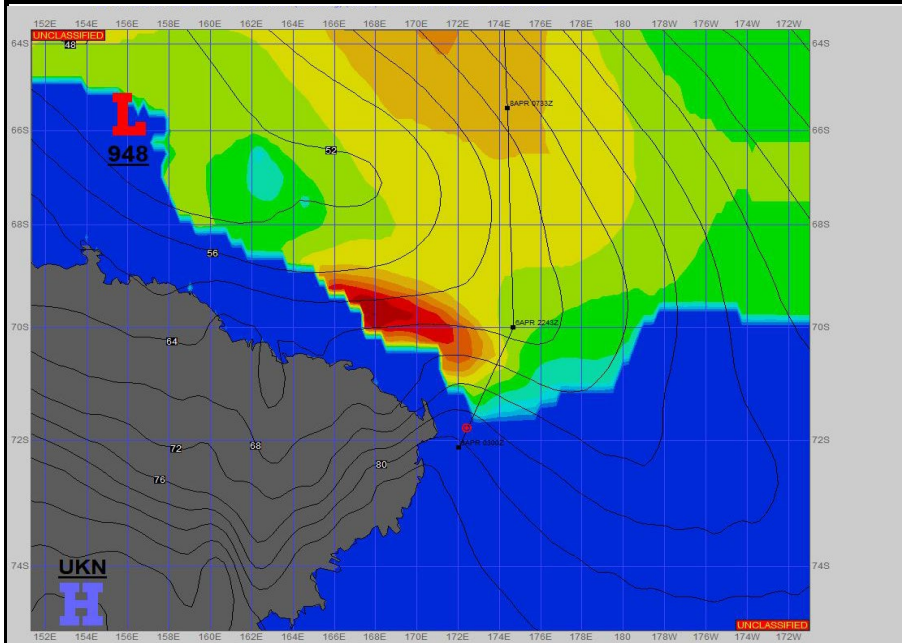
Ref B: SITREP 4 April 2025

SURFACE ANALYSIS

6-Apr-2025

06Z

Seas (FT)

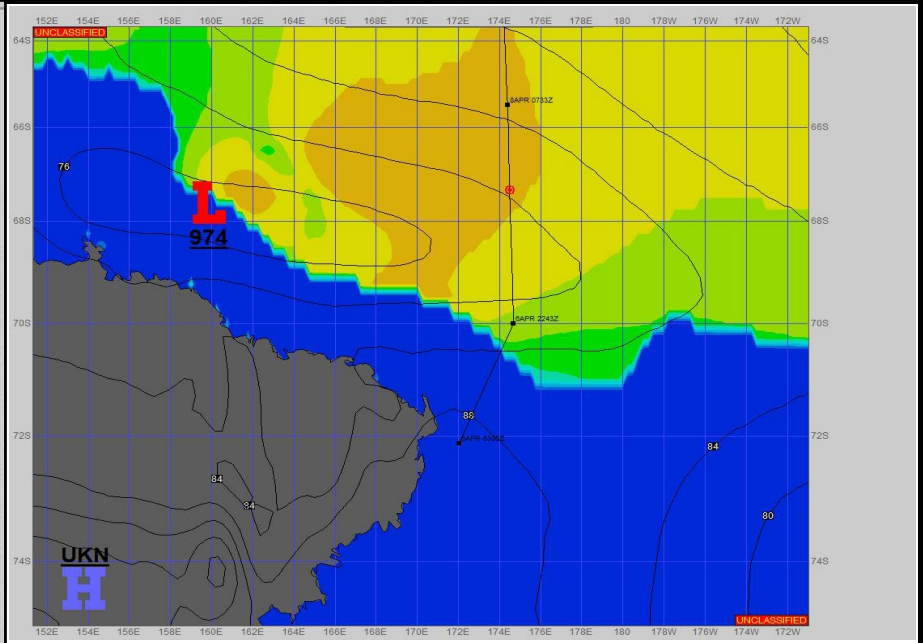


SURFACE FORECAST

7-Apr-2025

18Z

Seas (FT)



METSIT 06Z

6-Apr

A strong low pressure system and associated fronts along the northern Antarctic coast continues to deepen and move East during the forecast period. This system will produce heavy snow with gale force winds and high seas during the early portion of your transit. Conditions will gradually subside late in the forecast period. The outlook period will find you on the backside of the system with significantly lower winds and seas.

FORECASTER NOTES

Winds may differ from those forecast due to funneling/sheltering effects of islands and katabatic winds off glaciers.

VALID TIME	6-Apr 12Z	6-Apr 18Z	7-Apr 00Z	7-Apr 06Z	7-Apr 12Z	7-Apr 18Z	8-Apr 00Z	8-Apr 06Z
SKY CONDITION	CLOUDY	CLOUDY	CLOUDY	CLOUDY	CLOUDY	CLOUDY	MOSTLY CLOUDY	CLOUDY
WEATHER	SNOW	SNOW	SNOW	SNOW	SNOW	SNOW	SNOW	SNOW & FOG
VISIBILITY (NM)	<1/2	<1/2	1/2 - 1	1/2 - 1	1/2 - 1	1/2 - 1	1 - 3	1 - 3
SFC WINDS (DIR & KTS)	SSW 35-45 GUST 70	SSE 35-45 GUST 60	S 30-40 GUST 50	SE 18-25 GUST 30	NW 18-25 GUST 35	NW 18-25 GUST 35	W 15-20 GUST 25	W 10-15 GUST 20
SFC MAX/MIN (°C)	-5 / -15				-1 / -4			
SST RANGE (°C)	-1 / -2				-1 / -2			
SEAS (DIR & FT)	S 14-18	S 16-20	S 16-20	S 14-18	NW 14-18	NW 13-16	N 12-15	N 11-14
ICE ACCRETION	MODERATE	LIGHT	LIGHT	NIL	NIL	NIL	NIL	NIL

MCMURDO WEATHER (MCM)

COMM: 720.568.1019 IRIDIUM: 8816.763.20030

EMAIL: mcmfcstr@usap.gov

FORECASTER: Alan Stratton