

Ref A: POLAR STAR WX OBSERVATION 25 FEB 2020 / 00Z

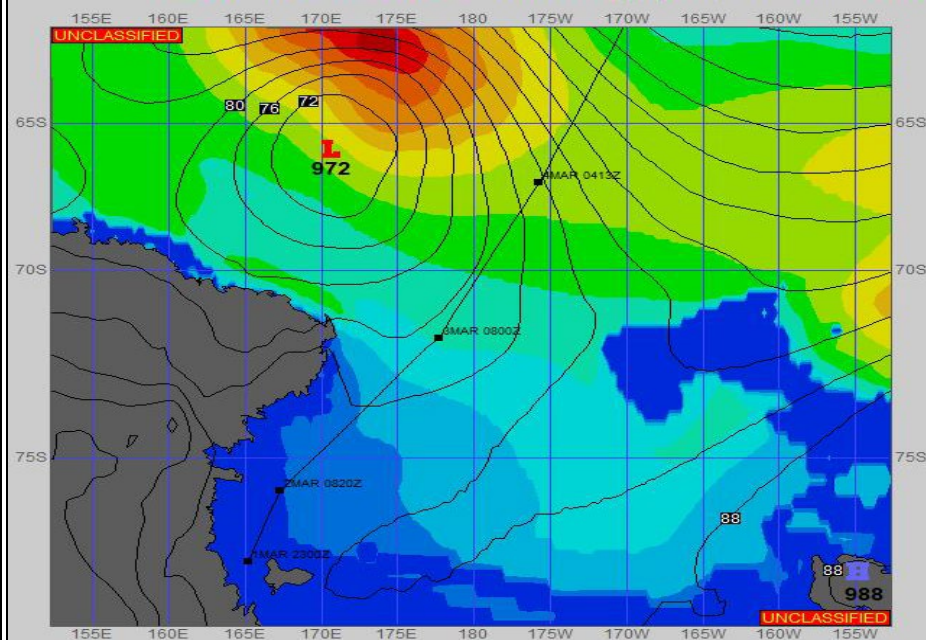
Ref B:

SURFACE ANALYSIS

1-Mar-2025

06Z

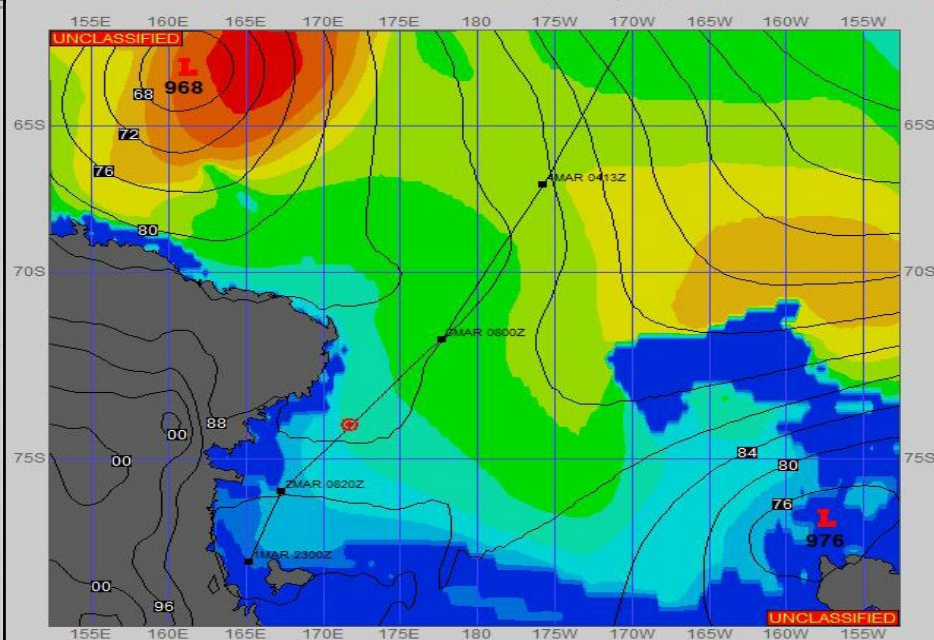
Seas (FT)



SURFACE FORECAST

2-Mar-2025

18Z



METSIT 06Z 1-Mar Expect relatively calm conditions as you depart the McMurdo Sound and into the southern part of the Ross Sea. Cloudy conditions will persist with a slight off continent flow. A low pressure system skirts around Cape Adare and moves southeastward, moving across the northern part of the Ross Sea. As you proceed north, this system will pass east. but conditions will be felt with the winds increasing, as well a snow, reducing visibilities during the heavier snowfall.

FORECASTER NOTES Request 6 hourly weather observation reports IAW international ship weather code.

VALID TIME	1-Mar 12Z	1-Mar 18Z	2-Mar 00Z	2-Mar 06Z	2-Mar 12Z	2-Mar 18Z	3-Mar 00Z	3-Mar 06Z
SKY CONDITION	MOSTLY CLOUDY	MOSTLY CLOUDY	MOSTLY CLOUDY	CLOUDY	CLOUDY	CLOUDY	CLOUDY	MOSTLY CLOUDY
WEATHER	SNOW	NONE	NONE	SNOW & FOG	SNOW & FOG	SNOW & FOG	SNOW & FOG	SNOW
VISIBILITY (NM)	UNRESTRICTED	UNRESTRICTED	UNRESTRICTED	2 - 4	3 - 5	1 - 3	1 - 3	1/2 - 1
SFC WINDS (DIR & KTS)	SW 5-10	SW 5-10	SW 5-10	SW 10-15	W-SW 10-15 GUST 20	NE-SE 10-15 GUST 20	NE-10-15 GUST 20	SW 1-20 GUST 25
SFC MAX/MIN (°C)	-5 / -7				-2 / -5			
SST RANGE (°C)	-1 / -2				-1 / -2			
SEAS (DIR & FT)	SW 0-2	SW 0-2	SW 0-2	SW 2-4	W-SW 4-6	SW 6-8	SW 6-8	S 8-10
ICE ACCRETION	NIL	NIL	NIL	LIGHT	MODERATE	MODERATE	MODERATE	MODERATE

