

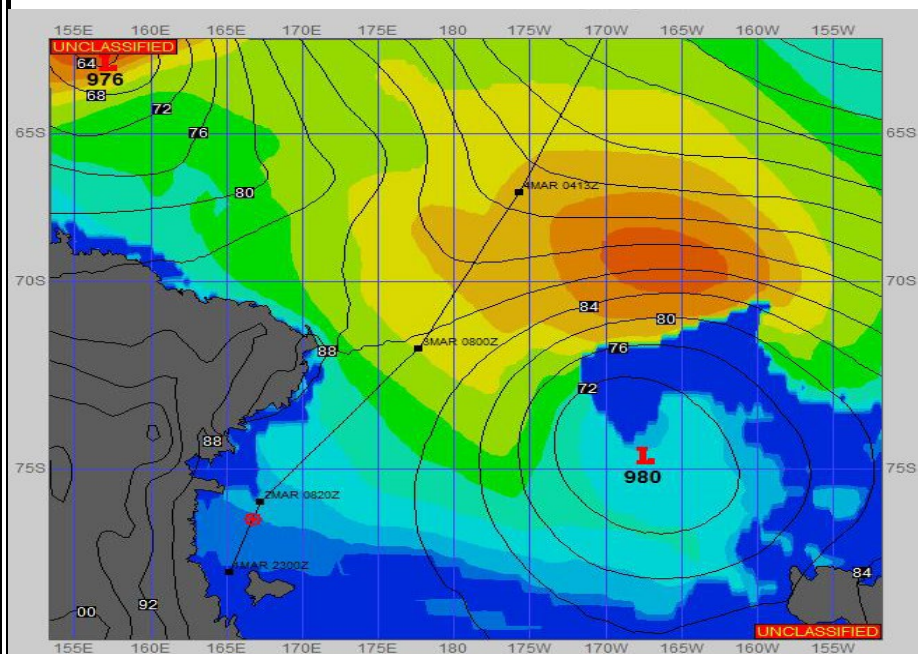
Ref A: POLAR STAR WX OBSERVATION 25 FEB 2020 / 00Z

Ref B:

SURFACE ANALYSIS

2-Mar-2025

06Z

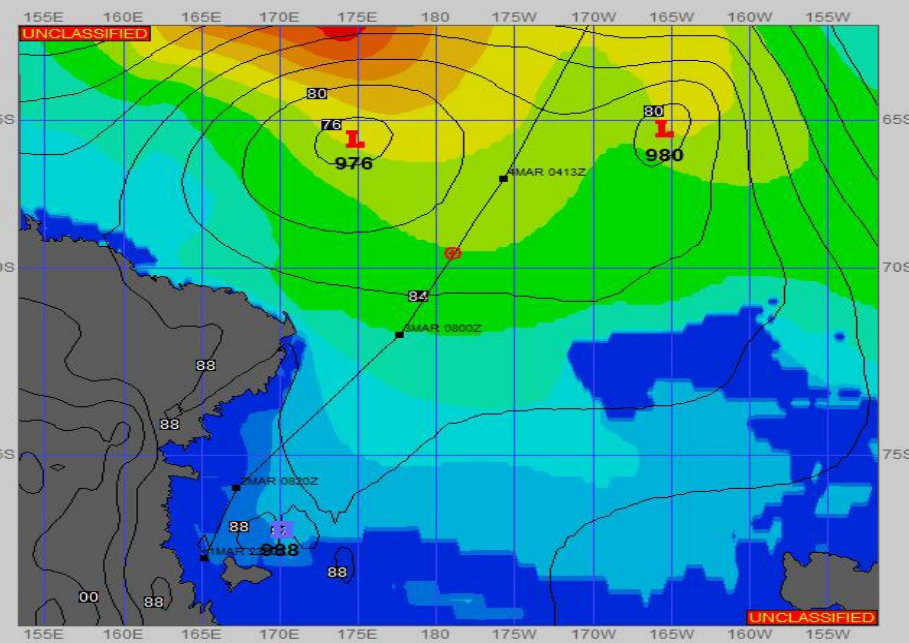


Seas (FT)

SURFACE FORECAST

3-Mar-2025

18Z



METSIT 06Z 2-Mar Expect relatively calm conditions in the McMurdo Sound and into the southern part of the Ross Sea. Cloudy conditions will persist with a slight off continent flow with periods of snow, reducing visibilities during the heavier snowfall. A low pressure system is currently transiting the northern part of the Ross Sea from west to east with a slightly southeastly track. As you proceed north, this system will pass east, but conditions will be felt with the increasing seas as you proceed into the Southern Ocean. The next low pressure system, as seen in the forecast chart, will be moving in from the west.

FORECASTER NOTES

Request 6 hourly weather observation reports IAW international ship weather code.

VALID TIME	2-Mar 12Z	2-Mar 18Z	3-Mar 00Z	3-Mar 06Z	3-Mar 12Z	3-Mar 18Z	4-Mar 00Z	4-Mar 06Z
SKY CONDITION	MOSTLY CLOUDY	MOSTLY CLOUDY	MOSTLY CLOUDY	MOSTLY CLOUDY	MOSTLY CLOUDY	MOSTLY CLOUDY	MOSTLY CLOUDY	MOSTLY CLOUDY
WEATHER	SNOW	NONE	SNOW	SNOW & FOG	SNOW	SNOW & FOG	SNOW & FOG	SNOW & FOG
VISIBILITY (NM)	3 - 5	UNRESTRICTED	4 - 6	2 - 4	3 - 5	2 - 4	1 - 3	1 - 3
SFC WINDS (DIR & KTS)	NW 10-15	NE 10-15 GUST20	NE 10-15 GUST 20	E-SE 10-15	N 5-10	NE-E 5-10	NE-SE 5-10	VRB 5-10
SFC MAX/MIN (°C)	-2 / -6				-1 / 5			
SST RANGE (°C)	-1 / -2				-1 / 0			
SEAS (DIR & FT)	N 4-6	N-NW 6-8	NW 6-8	N 8-10	N 8-10	N 10-12	N 12-14	N 12-14
ICE ACCRETION	LIGHT	LIGHT	LIGHT	LIGHT	MODERATE	MODERATE	MODERATE	MODERATE

