

Ref A: POLAR STAR WX OBSERVATION 25 FEB 2020 / 00Z

Ref B:

SURFACE ANALYSIS

3-Mar-2025

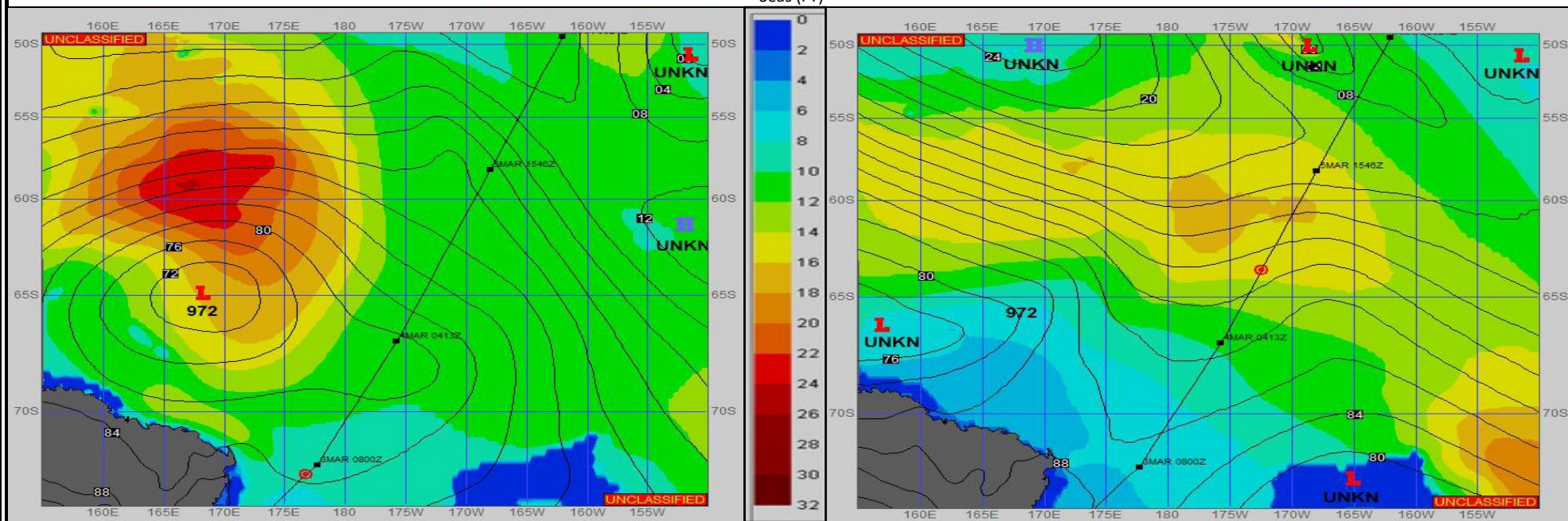
06Z

Seas (FT)

SURFACE FORECAST

4-Mar-2025

18Z



METSIT 06Z 3-Mar List occasional snow showers will persist as the low to the northeast continues to move southeastward while also dissipating. The energy on the low will still increase seas and continue increasing as a deep trough starts to make way from the west. After a brief lull in winds, they increase with gusts from the west, southwest. The precipitation starts as a mix but will turn mostly to rain as the temperatures continue to rise and you continue northward.

FORECASTER NOTES

Request 6 hourly weather observation reports IAW international ship weather code.

VALID TIME	3-Mar 12Z	3-Mar 18Z	4-Mar 00Z	4-Mar 06Z	4-Mar 12Z	4-Mar 18Z	5-Mar 00Z	5-Mar 06Z
SKY CONDITION	CLOUDY	CLOUDY	CLOUDY	MOSTLY CLOUDY	MOSTLY CLOUDY	MOSTLY CLOUDY	CLOUDY	CLOUDY
WEATHER	SNOW	SNOW & FOG	NONE	NONE	NONE	NONE	MIXED & FOG	RAIN & FOG
VISIBILITY (NM)	4 - 6	2 - 4	UNRESTRICTED	UNRESTRICTED	4 - 6	3 - 5	2 - 4	1/2 - 1
SFC WINDS (DIR & KTS)	ESE 5-10	VRB 5-10	VRB 5-10	W-NW 5-10	SW-W 10-15 GUST 20	SW-W 15-20 GUST 30	W 10-15 GUST 25	SW-W 15-20 GUST 35
SFC MAX/MIN (°C)	1 / -1				4 / 2			
SST RANGE (°C)	0 / -1				1 / 5			
SEAS (DIR & FT)	NW 10-12	NW 10-12	NW 10-12	NW 12-14	WNW 13-15	W 14-16	W 15-17	W 16-18
ICE ACCRETION	LIGHT	LIGHT	NIL	NIL	LIGHT	MODERATE	MODERATE	LIGHT

