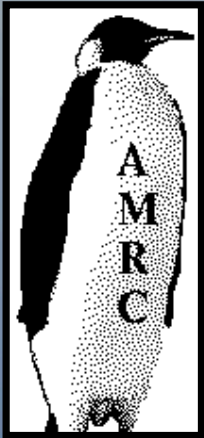


Calving & Tracking of a Recent Tabular Iceberg in the Ross Ice Shelf Coastal Region of Antarctica



Dr. Matthew Lazzara

Antarctic Meteorological Research Center (AMRC)
Space Science and Engineering Center (SSEC)
University of Wisconsin-Madison, Madison, WI



Ashley Brickl

Sauk Prairie Middle School
Sauk City, WI



Lee Welhouse

Antarctic Meteorological Research Center (AMRC)
Space Science and Engineering Center (SSEC)
University of Wisconsin-Madison, Madison, WI



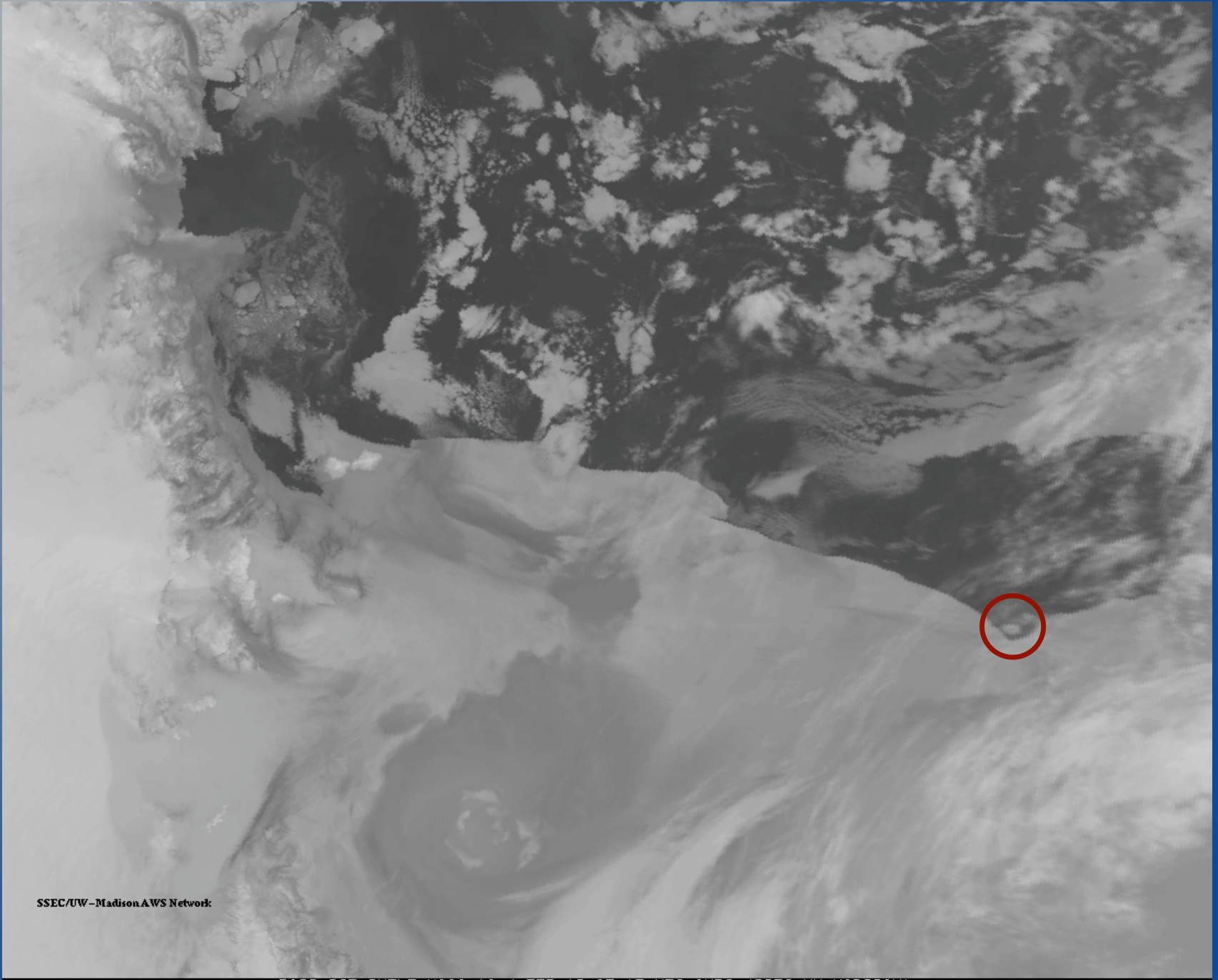
Date: 5 May 2012

Synopsis

On 17 April 2012, Kay Lawson of University of Alaska reported to the AMRC that an iceberg was seen on the AMRC iceberg monitoring web pages.

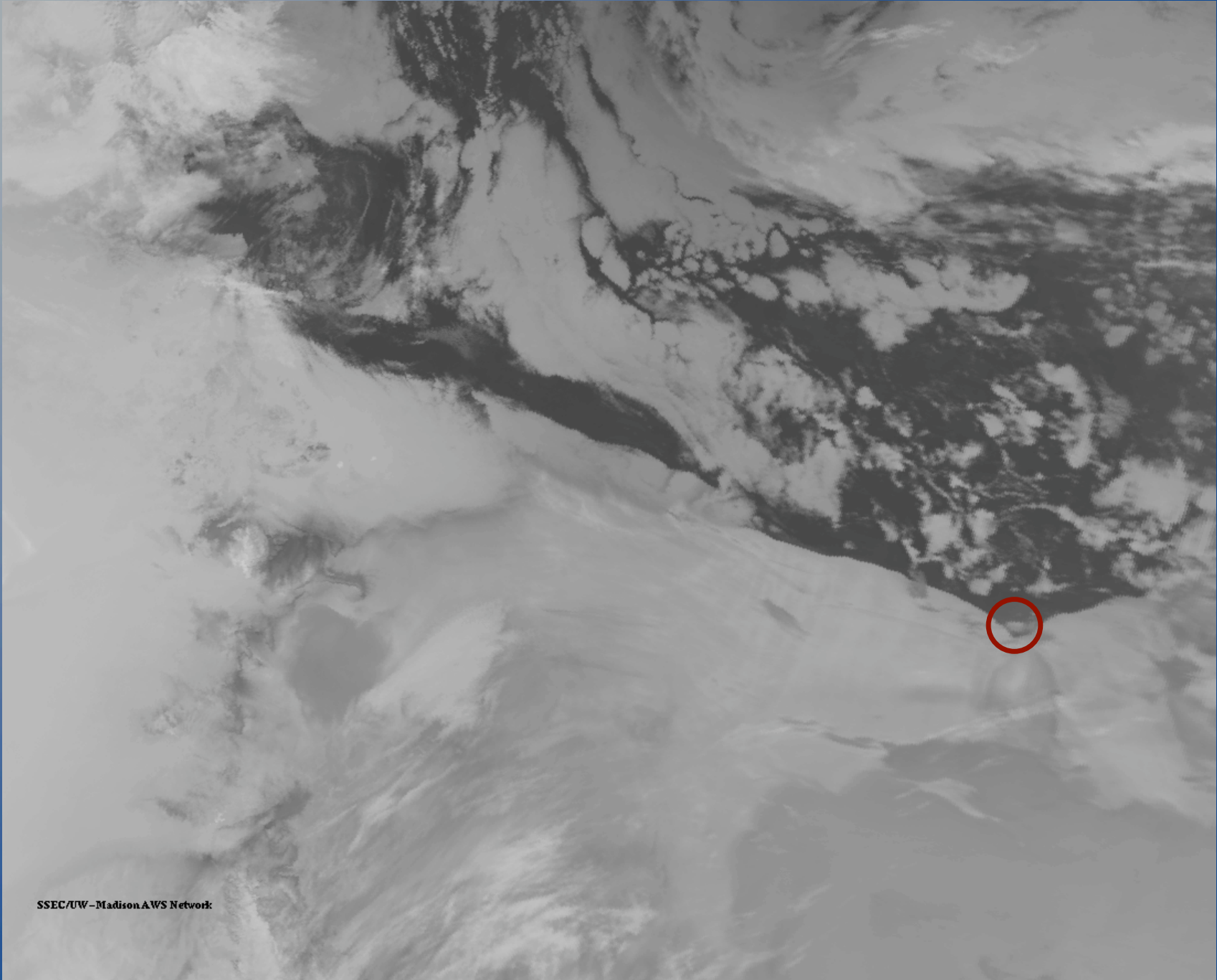
Investigative effort by Ashley Brickl of Sauk Prairie Middle School (AMRC visitor) and Matthew Lazzara of the AMRC found the following imagery of the iceberg that appears to have calved from the Bay of Whales, near Little America, Antarctica between 31 January and 4 February 2012.

Lee Welhouse and Matthew Lazzara of the AMRC highlighted the imagery presented here.



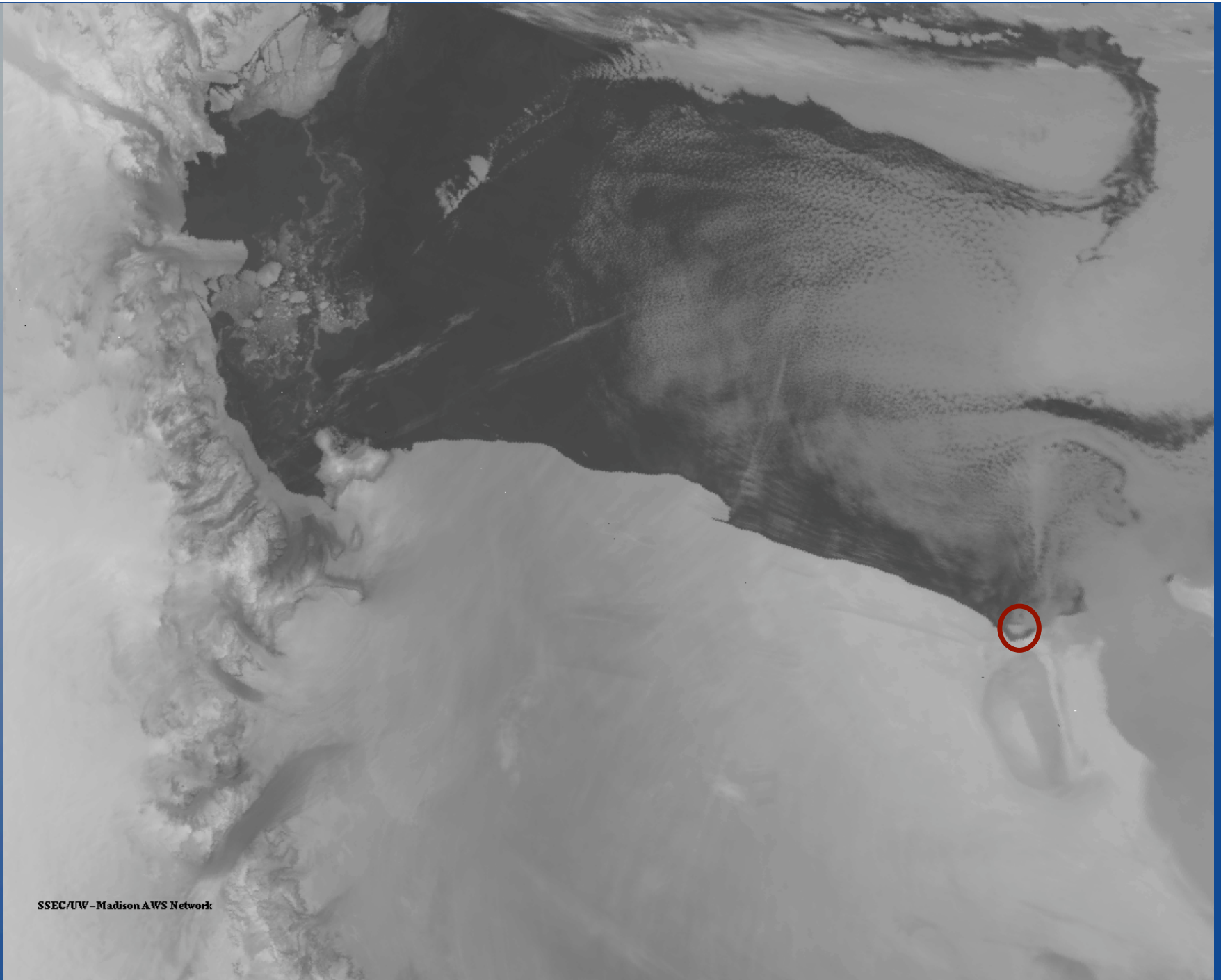
SSEC/UW-Madison AWS Network

ROSS ICE SHELF NOAA-18 4 FEB 12 AT 13 UTC AMRC: (SSEC:UW-MADISON)



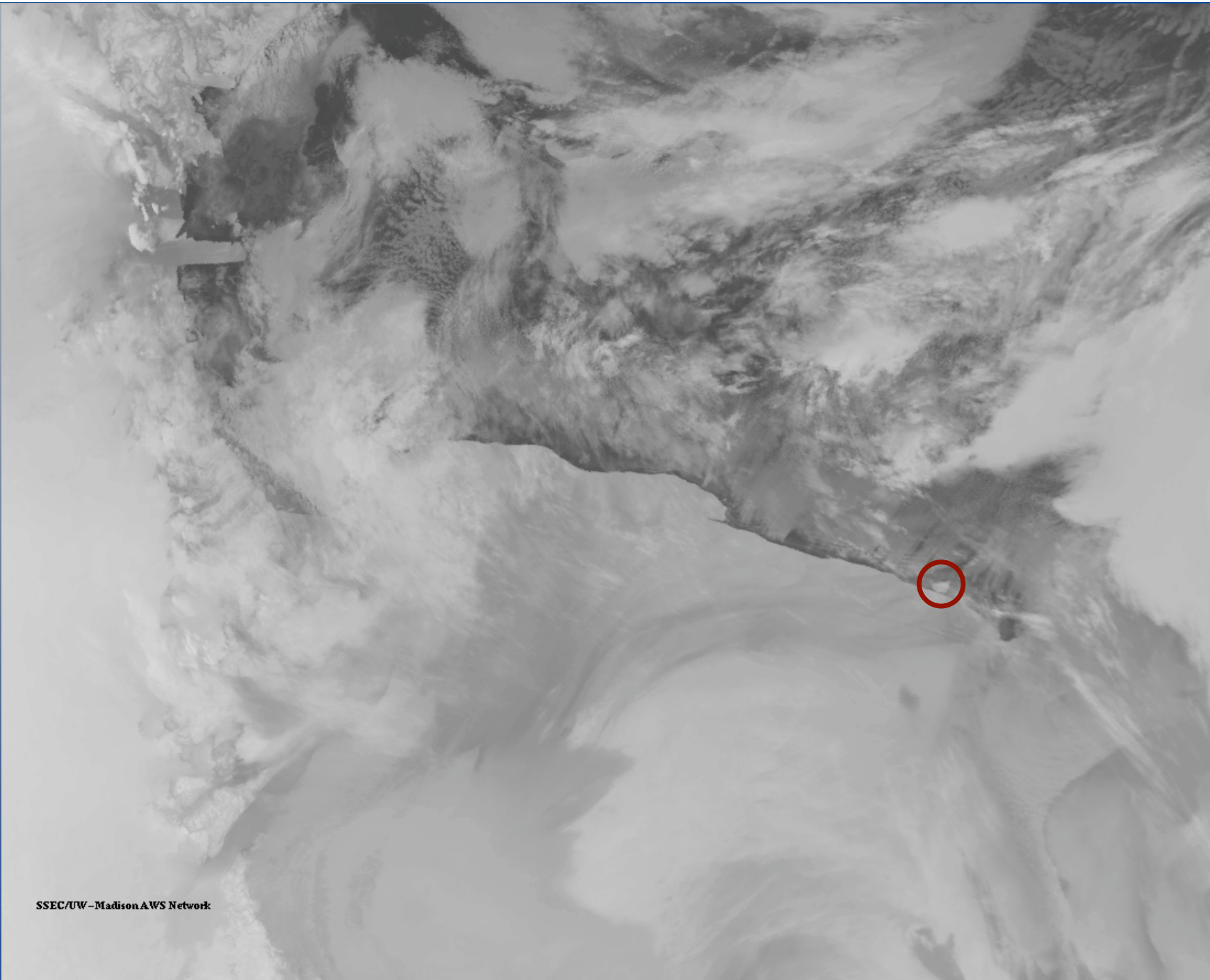
SSEC/UW-Madison AWS Network

ROSS ICE SHELF NOAA-18 5 FEB 12 AT 13 UTC AMRC: (SSEC:UW-MADISON)



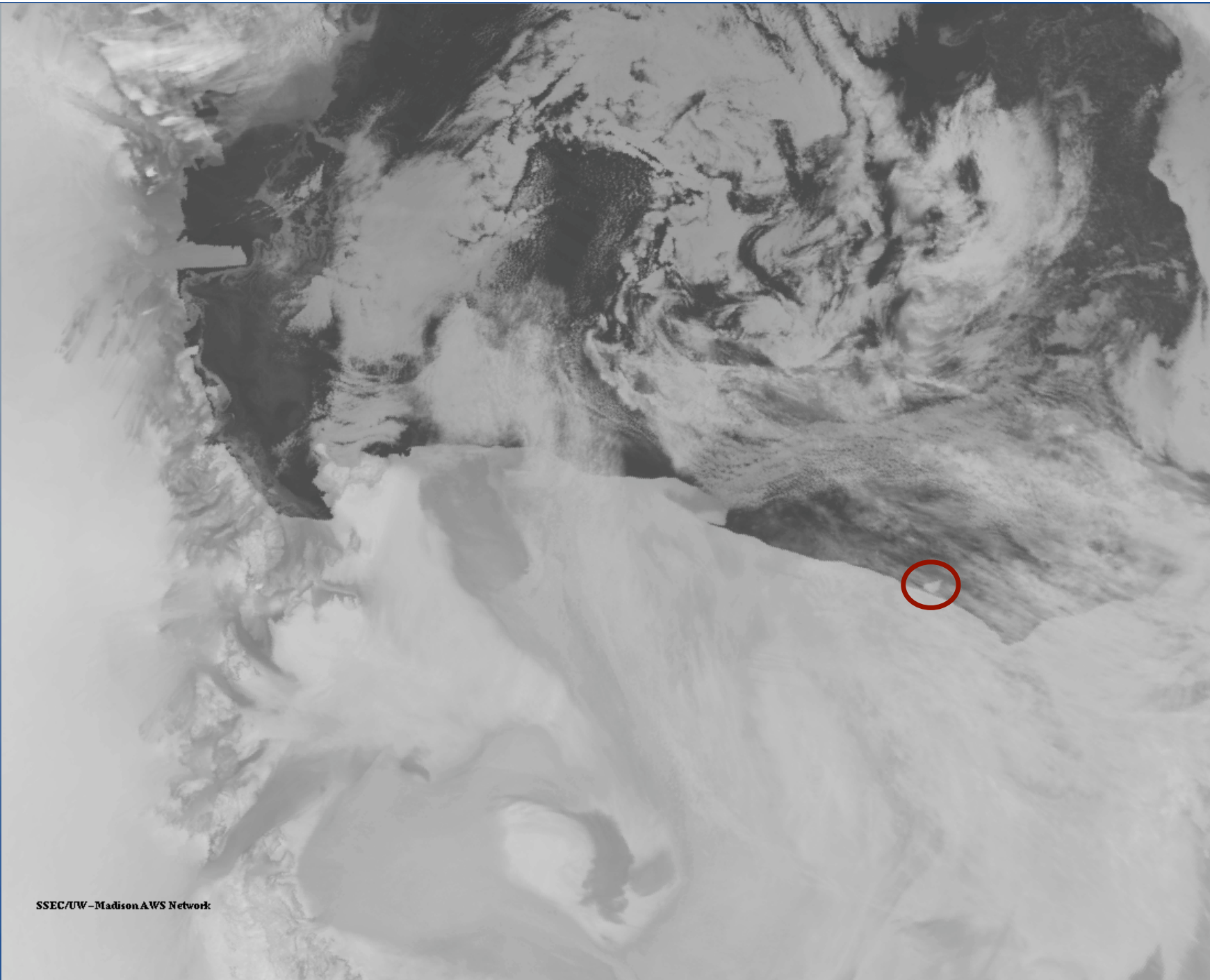
SSEC/UW-Madison AWS Network

ROSS ICE SHELF NOAA-18 7 FEB 12 AT 13 UTC AMRC: (SSEC:UW-MADISON)



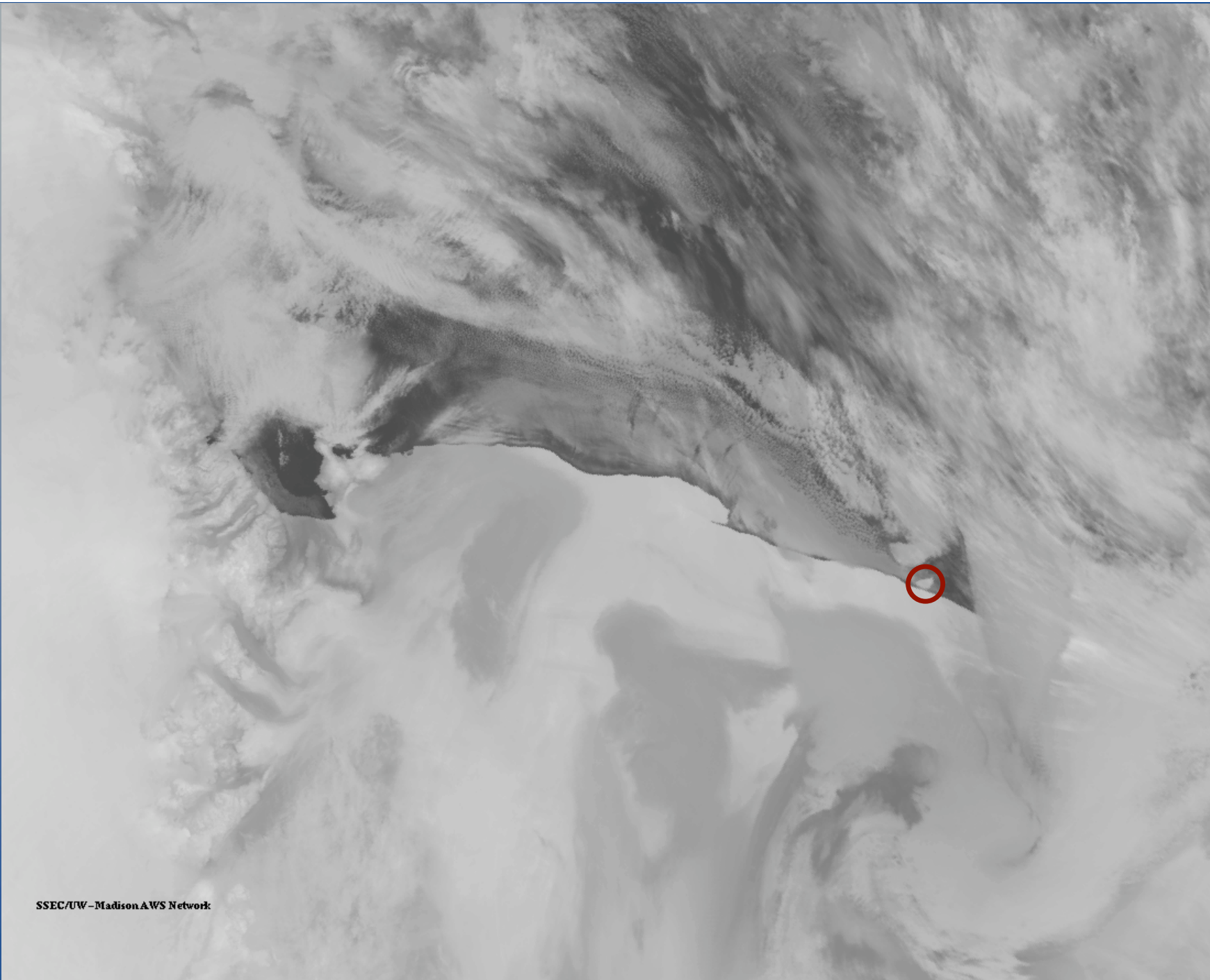
SSEC/UW-Madison AWS Network

ROSS ICE SHELF NOAA-18 28 FEB 12 AT 12 UTC AMRC:(SSEC:UW-MADISON)



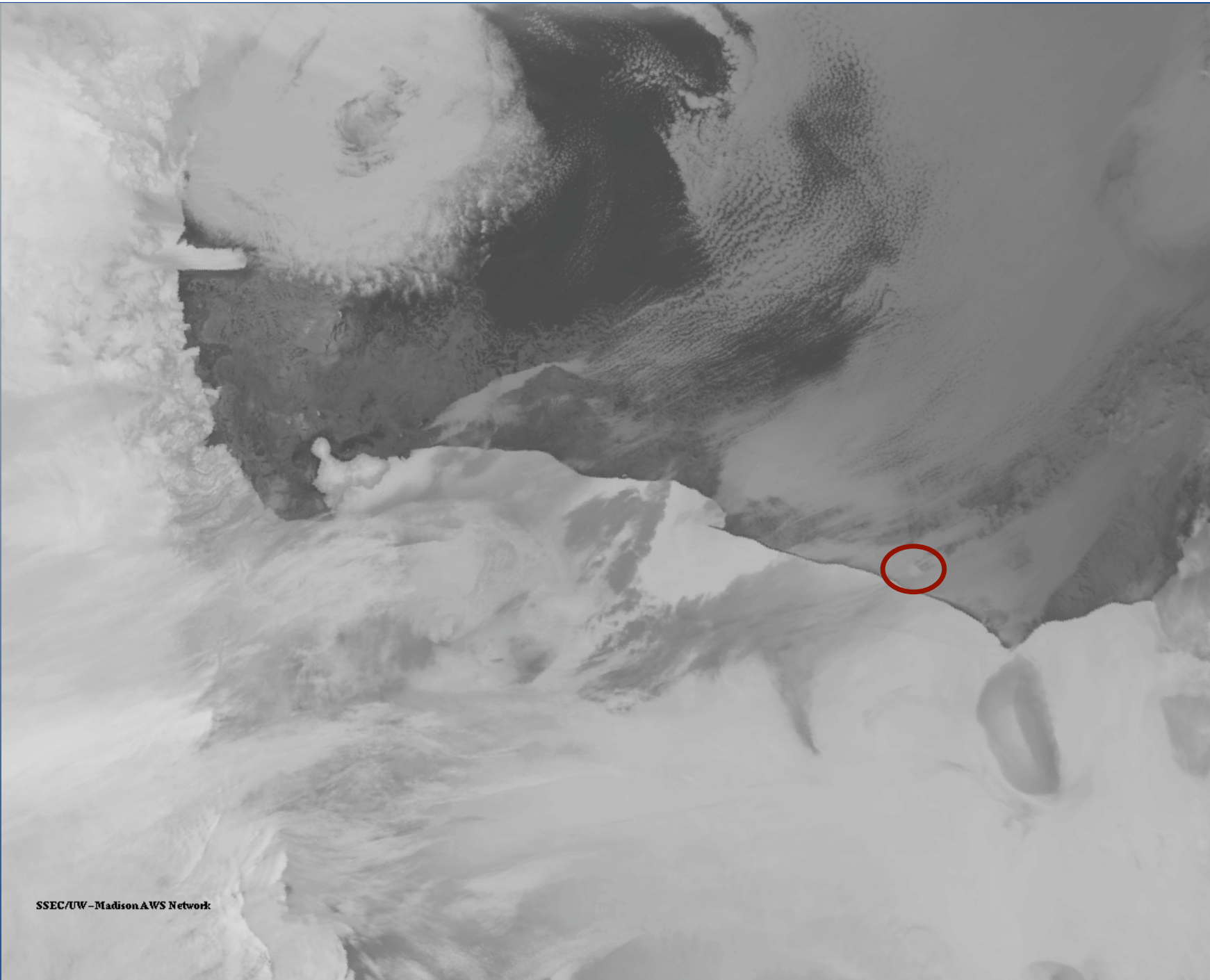
SSEC/UW-Madison AWS Network

ROSS ICE SHELF NOAA-18 29 FEB 12 AT 12 UTC AMRC:(SSEC:UW-MADISON)



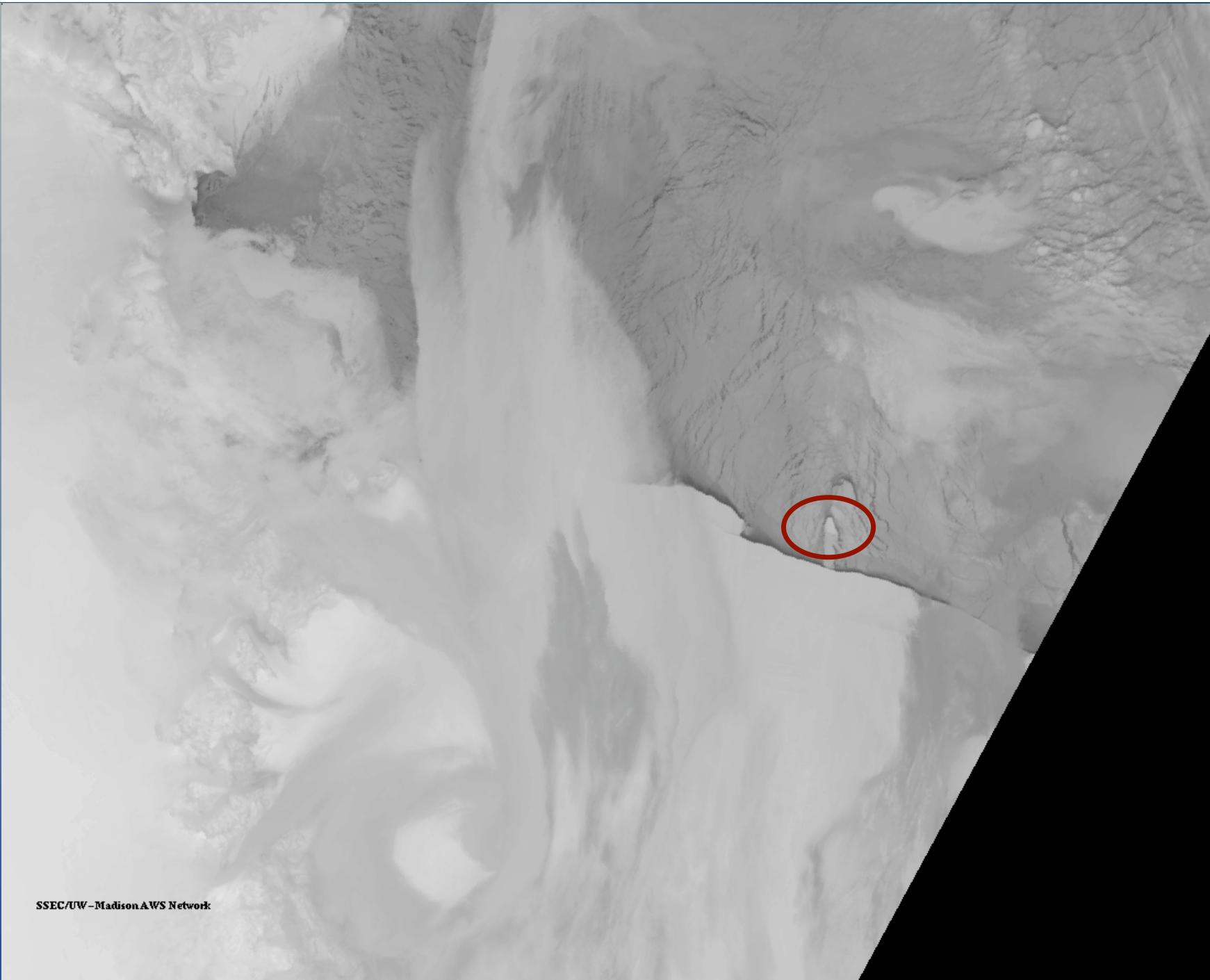
SSEC/UW-Madison AWS Network

ROSS ICE SHELF NOAA-18 2 MAR 12 AT 12 UTC AMRC: (SSEC:UW-MADISON)



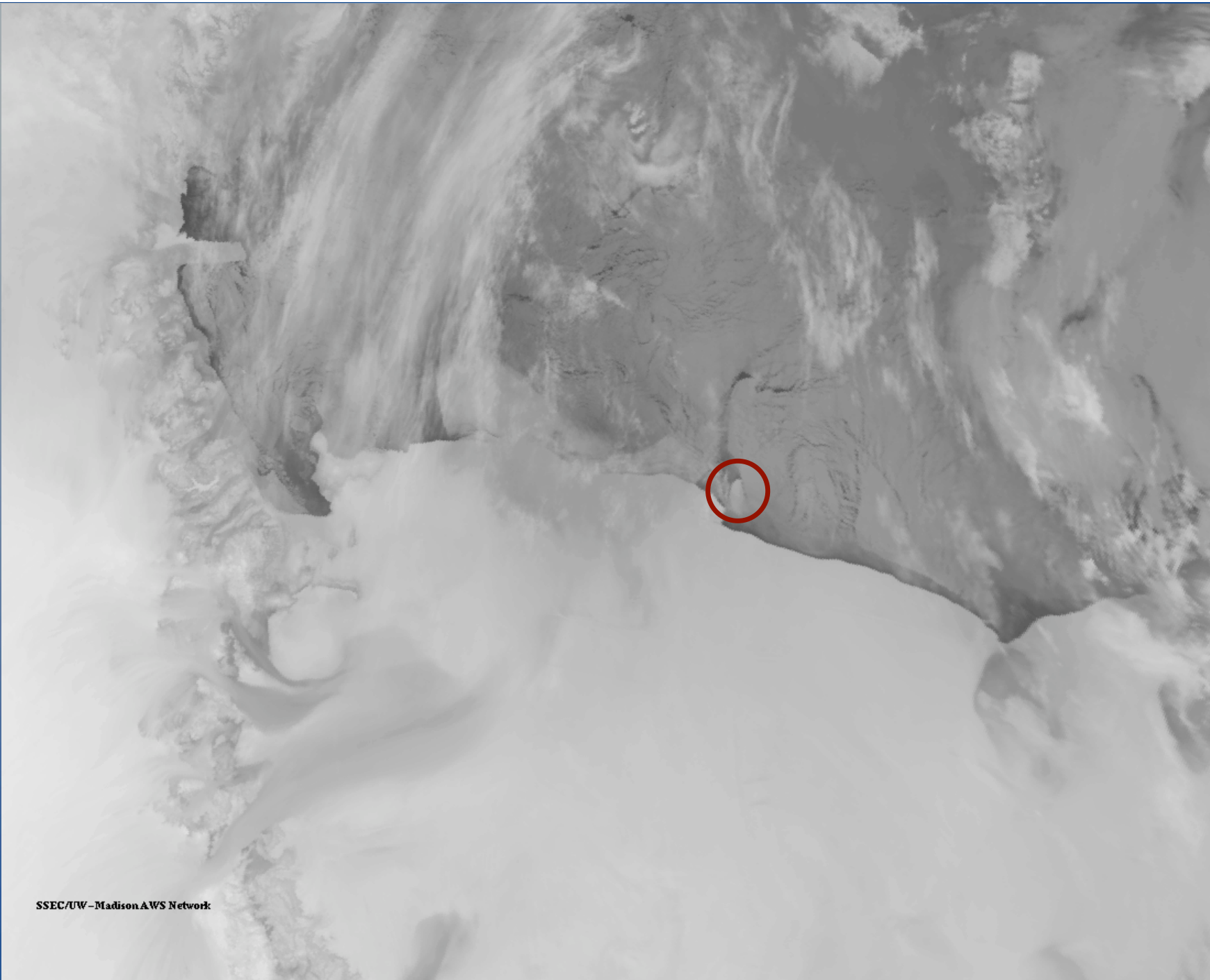
SSEC/UW-Madison AWS Network

ROSS ICE SHELF NOAA-18 10 MAR 12 AT 12 UTC AMRC:(SSEC:UW-MADISON)



SSEC/UW-Madison AWS Network

ROSS ICE SHELF NOAA-19 6 APR 12 AT 05 UTC AMRC: (SSEC:UW-MADISON)



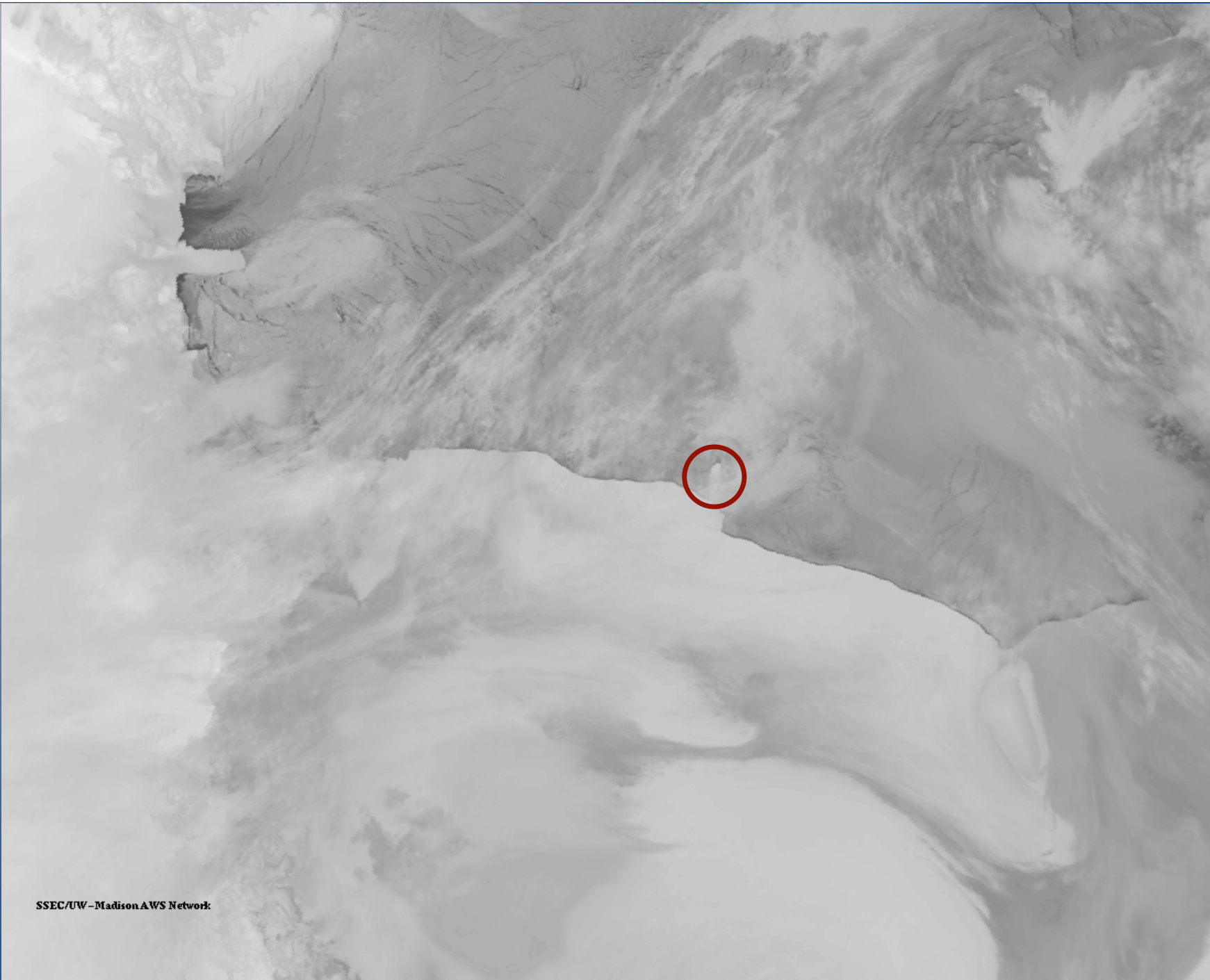
SSEC/UW-Madison AWS Network

ROSS ICE SHELF NOAA-18 12 APR 12 AT 13 UTC AMRC:(SSEC:UW-MADISON)



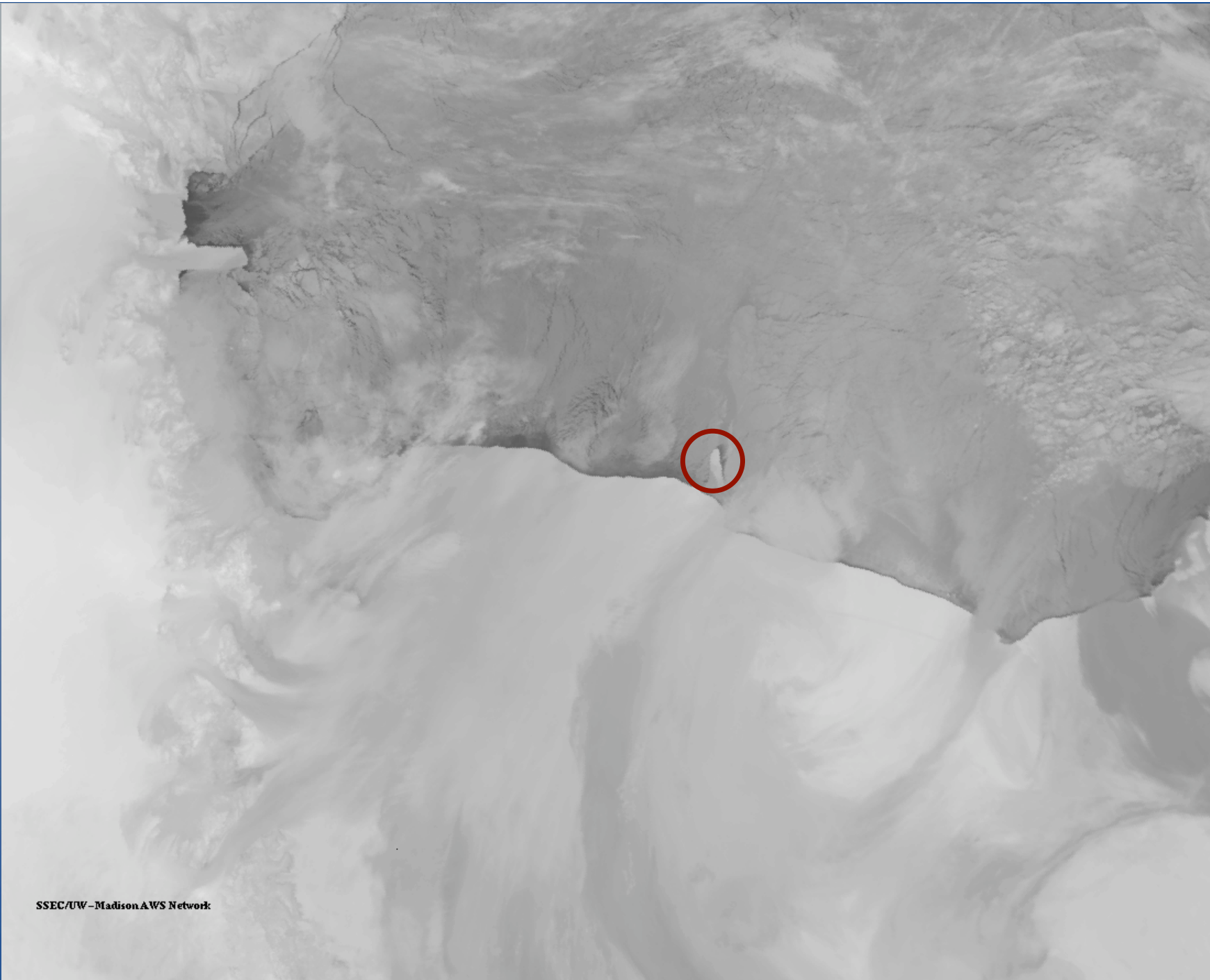
SSEC/UW-Madison AWS Network

ROSS ICE SHELF NOAA-18 13 APR 12 AT 13 UTC AMRC:(SSEC:UW-MADISON)



SSEC/UW-Madison AWS Network

ROSS ICE SHELF NOAA-18 15 APR 12 AT 12 UTC AMRC:(SSEC:UW-MADISON)



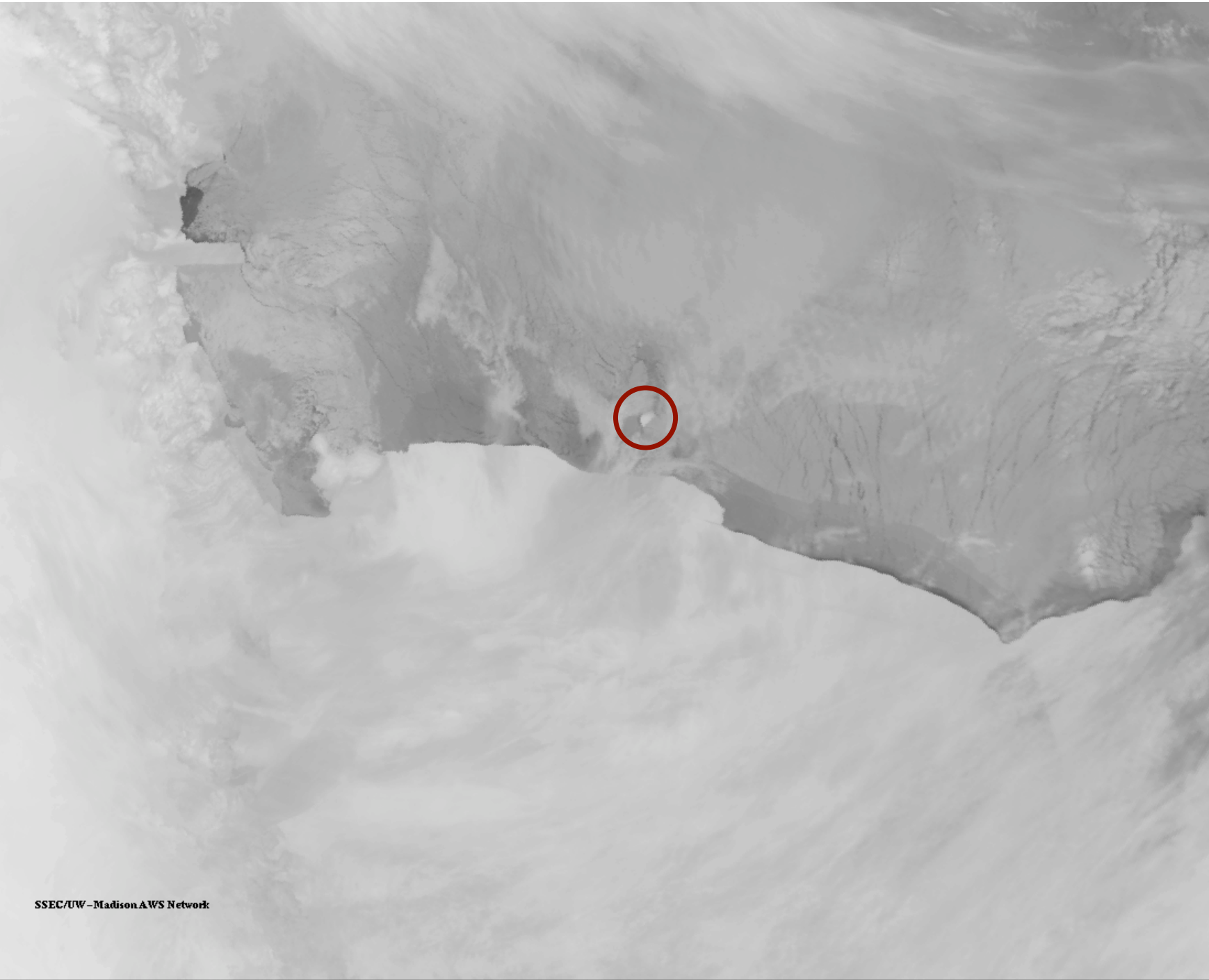
SSEC/UW-Madison AWS Network

ROSS ICE SHELF NOAA-18 16 APR 12 AT 12 UTC AMRC: (SSEC:UW-MADISON)



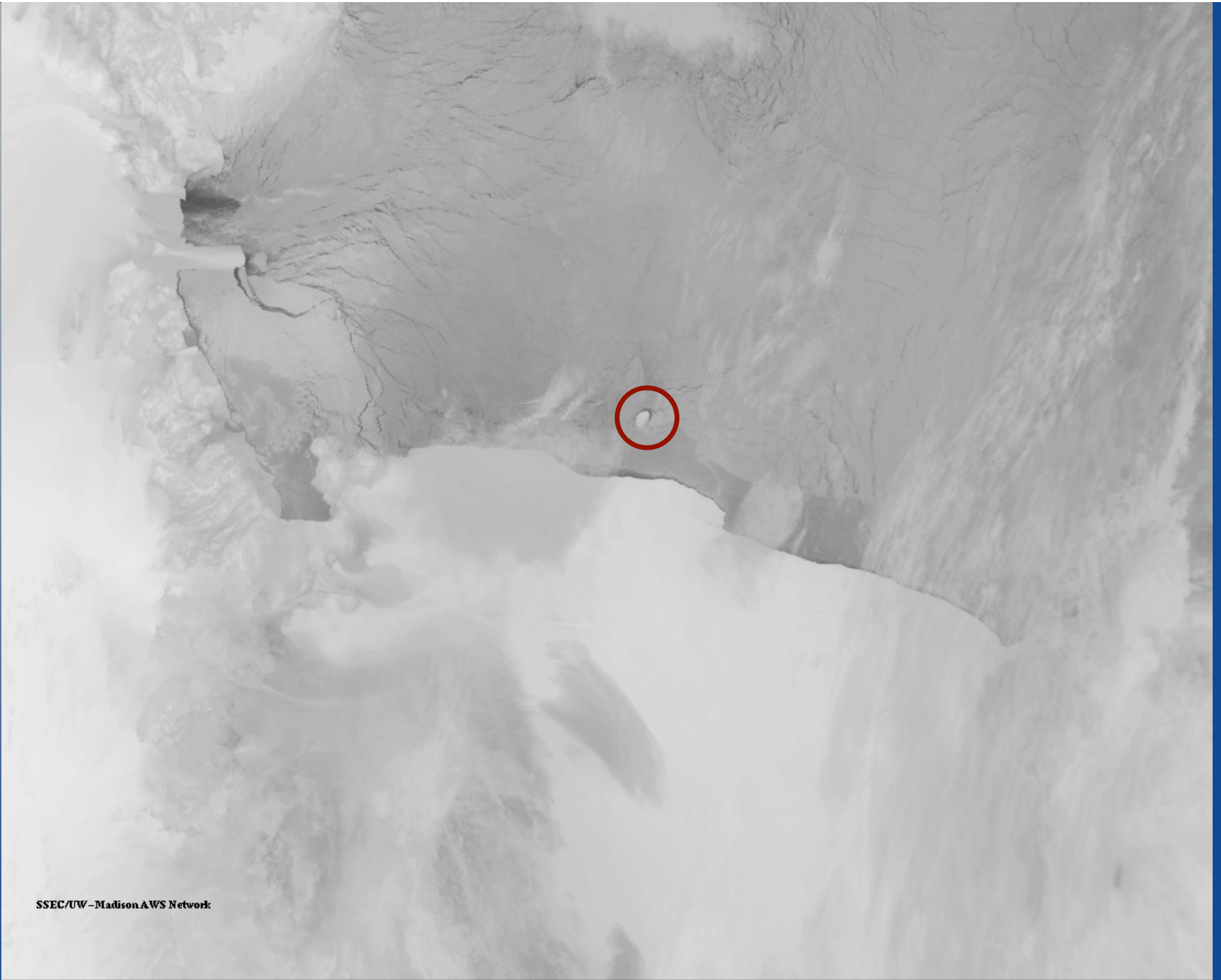
SSEC/UW-Madison AWS Network

ROSS ICE SHELF NOAA-18 29 APR 12 AT 13 UTC AMRC: (SSEC:UW-MADISON)



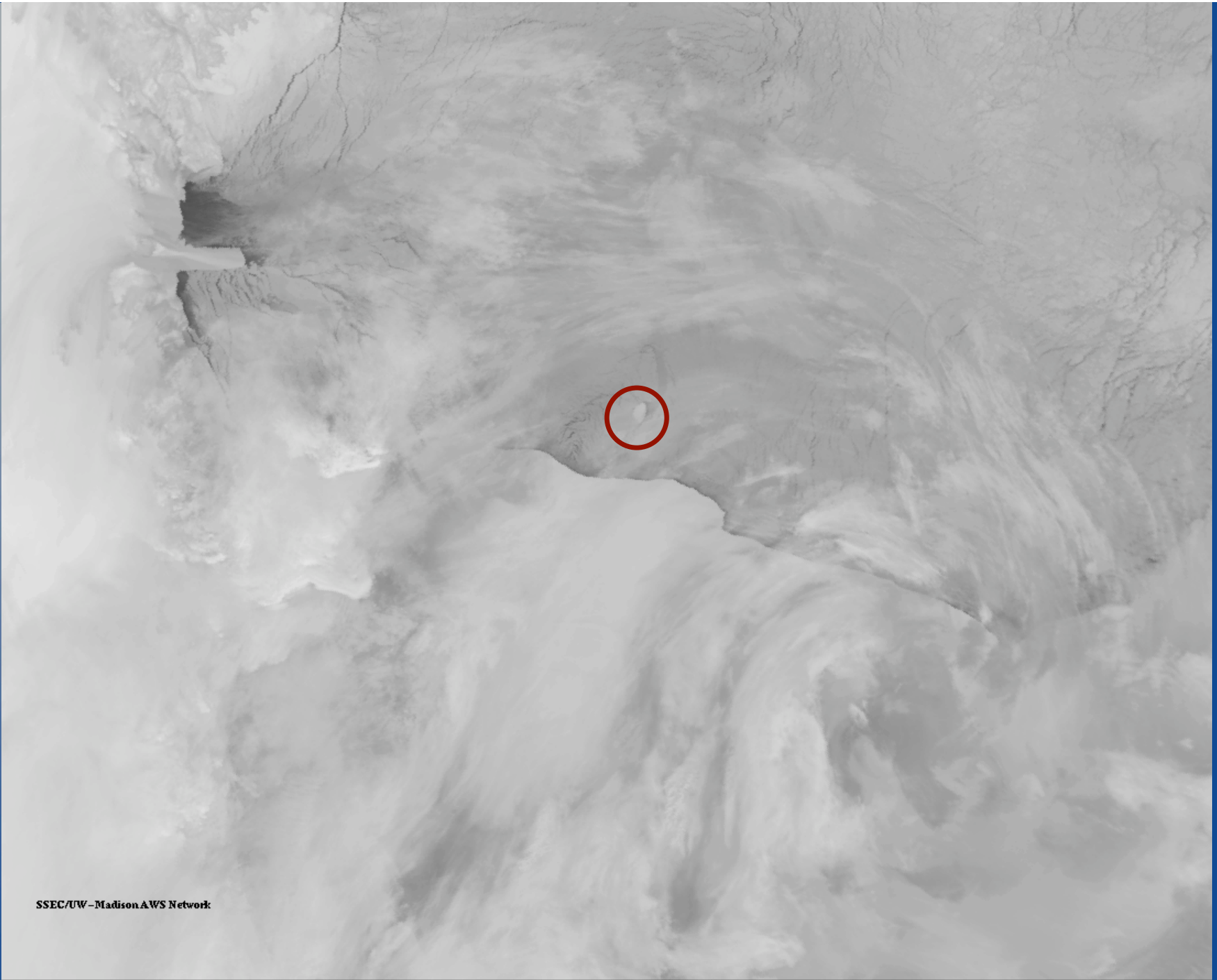
SSEC/UW-Madison AWS Network

ROSS ICE SHELF NOAA-18 2 MAY 12 AT 12 UTC AMRC: (SSEC:UW-MADISON)



SSEC/UW-Madison AWS Network

ROSS ICE SHELF NOAA-18 3 MAY 12 AT 12 UTC AMRC: (SSEC:UW-MADISON)



SSEC/UW-Madison AWS Network

ROSS ICE SHELF NOAA-18 4 MAY 12 AT 12 UTC AMRC: (SSEC:UW-MADISON)

Future Work

- Notification of this iceberg calving has been passed on to the National Ice Center - the agency that tracks and monitors Antarctic tabular icebergs
- Tracking will continue as polar orbiting satellite optical imagery from the SSEC Data Center and AMRC Antarctic Data Server(s) allows within the AMRC Ross Ice Shelf – Ross Sea monitoring region (via McIDAS-X)
 - Updates will be provide as they are available and can be arranged.

AMRC Iceberg updates:

<http://amrc.ssec.wisc.edu/data/iceberg.html>

<http://amrc.ssec.wisc.edu/iceberg.php>

Credit and acknowledgement:

AMRC, SSEC, UW-Madison

NSF grant number ANT-0838834

<http://amrc.ssec.wisc.edu/acknowledgments.html>