

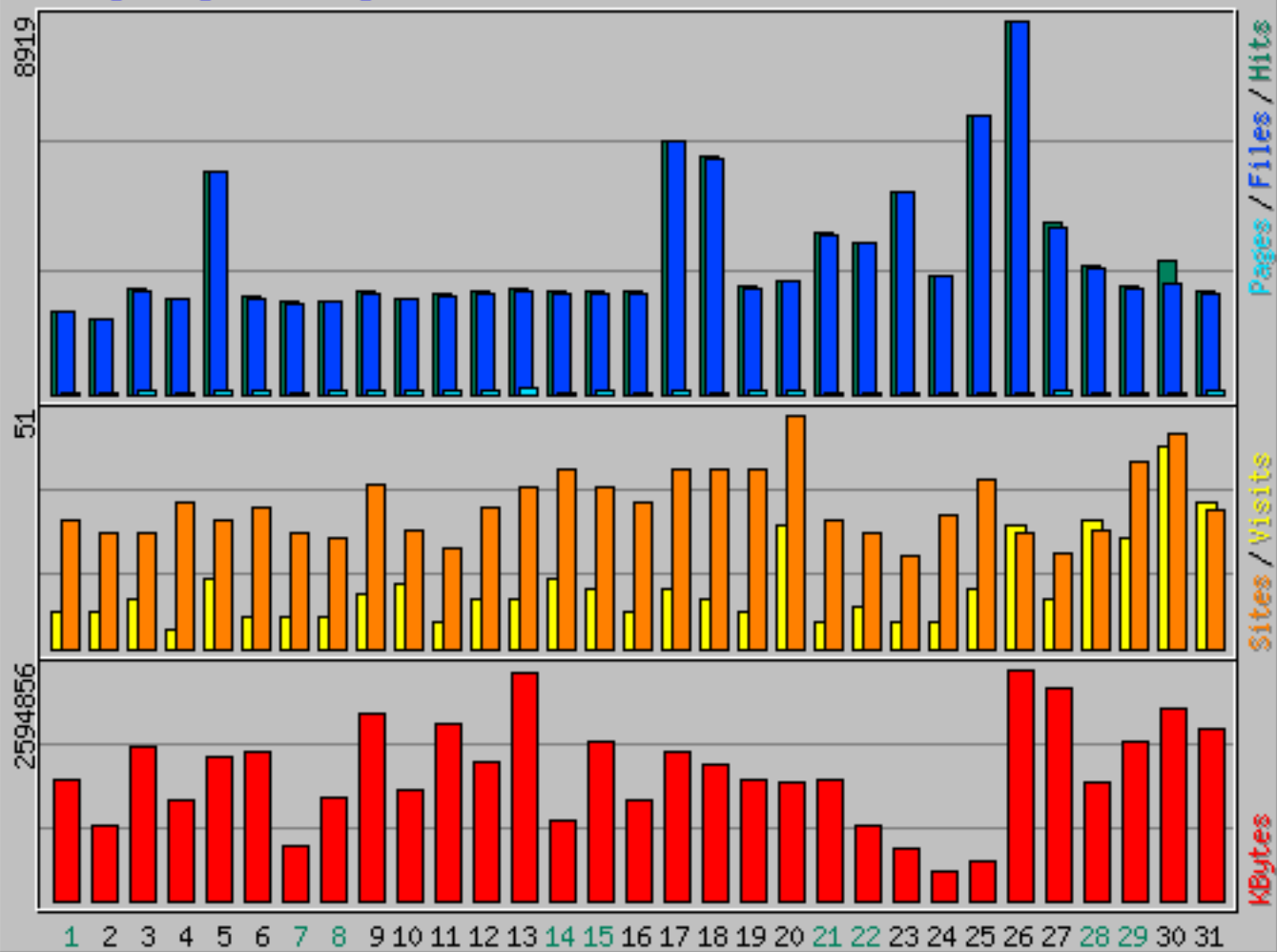
Usage Statistics for amrc.ssec.wisc.edu

Summary Period: May 2016
Generated 01-Jun-2016 01:01 UTC

[\[Daily Statistics\]](#) [\[Hourly Statistics\]](#) [\[URLs\]](#) [\[Sites\]](#) [\[Users\]](#) [\[Countries\]](#)

Monthly Statistics for May 2016		
Total Hits	103216	
Total Files	101565	
Total Pages	1991	
Total Visits	422	
Total KBytes	44914055	
Total Unique Sites	344	
Total Unique URLs	35490	
Total Unique Usernames	19	
	Avg	Max
Hits per Hour	138	3264
Hits per Day	3329	8919
Files per Day	3276	8879
Pages per Day	64	124
Sites per Day	11	51
Visits per Day	13	44
KBytes per Day	1448840	2594856
Hits by Response Code		
Code 200 - OK	98.40%	101565
Code 206 - Partial Content	1.60%	1651

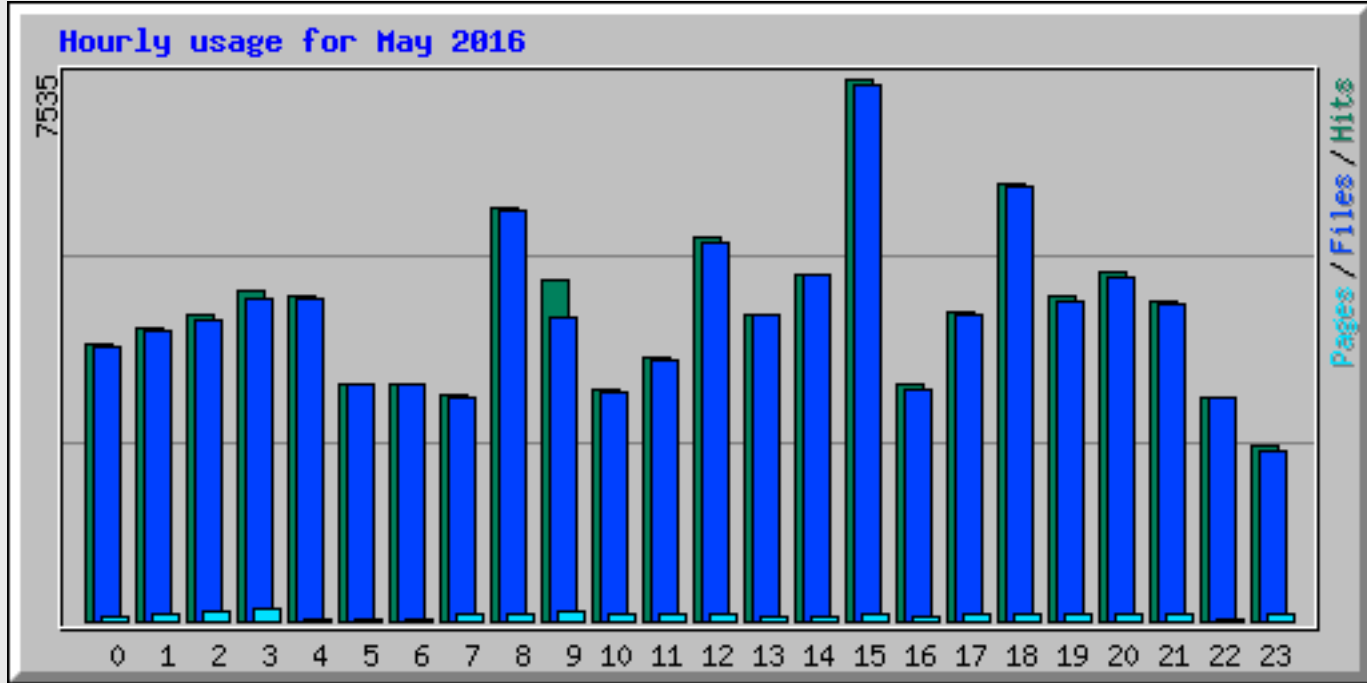
Daily usage for May 2016



Daily Statistics for May 2016

Day	Hits		Files		Pages		Visits		Sites		KBytes	
1	1977	1.92%	1949	1.92%	60	3.01%	8	1.90%	28	8.14%	1347072	3.00%
2	1818	1.76%	1801	1.77%	49	2.46%	8	1.90%	25	7.27%	841999	1.87%
3	2541	2.46%	2480	2.44%	71	3.57%	11	2.61%	25	7.27%	1718046	3.83%
4	2271	2.20%	2253	2.22%	56	2.81%	4	0.95%	32	9.30%	1125279	2.51%
5	5331	5.16%	5305	5.22%	67	3.37%	15	3.55%	28	8.14%	1623191	3.61%
6	2336	2.26%	2292	2.26%	114	5.73%	7	1.66%	31	9.01%	1656189	3.69%
7	2190	2.12%	2171	2.14%	47	2.36%	7	1.66%	25	7.27%	619304	1.38%
8	2233	2.16%	2204	2.17%	66	3.31%	7	1.66%	24	6.98%	1166782	2.60%
9	2447	2.37%	2377	2.34%	88	4.42%	12	2.84%	36	10.47%	2105049	4.69%
10	2300	2.23%	2270	2.24%	62	3.11%	14	3.32%	26	7.56%	1239137	2.76%
11	2377	2.30%	2318	2.28%	106	5.32%	6	1.42%	22	6.40%	1982345	4.41%
12	2439	2.36%	2408	2.37%	100	5.02%	11	2.61%	31	9.01%	1547031	3.44%
13	2519	2.44%	2436	2.40%	124	6.23%	11	2.61%	35	10.17%	2546277	5.67%
14	2453	2.38%	2425	2.39%	32	1.61%	15	3.55%	39	11.34%	888341	1.98%
15	2449	2.37%	2408	2.37%	97	4.87%	13	3.08%	35	10.17%	1783190	3.97%
16	2438	2.36%	2421	2.38%	48	2.41%	8	1.90%	32	9.30%	1124372	2.50%
17	6058	5.87%	6011	5.92%	94	4.72%	13	3.08%	39	11.34%	1680630	3.74%
18	5673	5.50%	5624	5.54%	60	3.01%	11	2.61%	39	11.34%	1533731	3.41%
19	2572	2.49%	2547	2.51%	73	3.67%	8	1.90%	39	11.34%	1360231	3.03%
20	2729	2.64%	2686	2.64%	79	3.97%	27	6.40%	51	14.83%	1315701	2.93%
21	3847	3.73%	3807	3.75%	43	2.16%	6	1.42%	28	8.14%	1361482	3.03%
22	3629	3.52%	3614	3.56%	9	0.45%	9	2.13%	25	7.27%	849914	1.89%

23	4846	4.70%	4843	4.77%	10	0.50%	6	1.42%	20	5.81%	595848	1.33%
24	2825	2.74%	2824	2.78%	10	0.50%	6	1.42%	29	8.43%	313899	0.70%
25	6651	6.44%	6647	6.54%	26	1.31%	13	3.08%	37	10.76%	439984	0.98%
26	8919	8.64%	8879	8.74%	49	2.46%	27	6.40%	25	7.27%	2594856	5.78%
27	4068	3.94%	3992	3.93%	109	5.47%	11	2.61%	21	6.10%	2383128	5.31%
28	3055	2.96%	3013	2.97%	49	2.46%	28	6.64%	26	7.56%	1318109	2.93%
29	2607	2.53%	2538	2.50%	57	2.86%	24	5.69%	41	11.92%	1768851	3.94%
30	3158	3.06%	2631	2.59%	53	2.66%	44	10.43%	47	13.66%	2162764	4.82%
31	2460	2.38%	2391	2.35%	83	4.17%	32	7.58%	30	8.72%	1921320	4.28%



Hourly Statistics for May 2016												
Hour	Hits			Files			Pages			KBytes		
	Avg	Total		Avg	Total		Avg	Total		Avg	Total	
0	124	3853	3.73%	122	3803	3.74%	2	74	3.72%	64547	2000946	4.46%
1	131	4064	3.94%	129	4014	3.95%	2	80	4.02%	67106	2080272	4.63%
2	136	4236	4.10%	134	4176	4.11%	3	113	5.68%	81480	2525873	5.62%
3	147	4581	4.44%	144	4471	4.40%	5	178	8.94%	116246	3603613	8.02%
4	145	4504	4.36%	144	4476	4.41%	0	20	1.00%	41631	1290575	2.87%
5	106	3302	3.20%	105	3282	3.23%	0	27	1.36%	22133	686109	1.53%
6	106	3291	3.19%	105	3278	3.23%	0	18	0.90%	30135	934173	2.08%
7	101	3143	3.05%	99	3094	3.05%	3	101	5.07%	56928	1764764	3.93%
8	185	5748	5.57%	183	5683	5.60%	3	107	5.37%	74618	2313163	5.15%
9	152	4732	4.58%	136	4230	4.16%	3	112	5.63%	74094	2296923	5.11%
10	103	3220	3.12%	102	3165	3.12%	3	97	4.87%	73069	2265143	5.04%
11	117	3655	3.54%	116	3612	3.56%	2	84	4.22%	48438	1501584	3.34%
12	171	5328	5.16%	169	5252	5.17%	3	107	5.37%	78825	2443574	5.44%
13	137	4263	4.13%	136	4244	4.18%	1	59	2.96%	34183	1059684	2.36%
14	155	4823	4.67%	154	4792	4.72%	1	60	3.01%	48626	1507411	3.36%
15	243	7535	7.30%	240	7448	7.33%	3	100	5.02%	82210	2548512	5.67%
16	105	3274	3.17%	104	3226	3.18%	2	72	3.62%	60074	1862289	4.15%
17	138	4293	4.16%	137	4251	4.19%	3	106	5.32%	56626	1755402	3.91%

18	195	6075	5.89%	194	6038	5.94%	3	103	5.17%	54873	1701075	3.79%
19	144	4492	4.35%	142	4427	4.36%	3	100	5.02%	66316	2055809	4.58%
20	156	4848	4.70%	154	4781	4.71%	3	99	4.97%	70470	2184568	4.86%
21	142	4429	4.29%	141	4381	4.31%	2	80	4.02%	50807	1575025	3.51%
22	100	3101	3.00%	99	3087	3.04%	0	16	0.80%	26566	823553	1.83%
23	78	2426	2.35%	75	2354	2.32%	2	78	3.92%	68839	2134014	4.75%

Top 30 of 35490 Total URLs												
#	Hits		KBytes		URL							
1	1489	1.44%	11	0.00%	/data2/ftp/pub/aws/realtime/hex/gilmore/8926.2.hex.txt							
2	1488	1.44%	279	0.00%	/data2/ftp/pub/aws/realtime/hex/gilmore/9116.1.hex.txt							
3	1488	1.44%	356	0.00%	/data2/ftp/pub/aws/realtime/hex/gilmore/9116.2.hex.txt							
4	1488	1.44%	343	0.00%	/data2/ftp/pub/aws/realtime/hex/gilmore/9116.3.hex.txt							
5	1488	1.44%	357	0.00%	/data2/ftp/pub/aws/realtime/hex/gilmore/9116.4.hex.txt							
6	1488	1.44%	337	0.00%	/data2/ftp/pub/aws/realtime/hex/gilmore/9116.5.hex.txt							
7	1488	1.44%	304	0.00%	/data2/ftp/pub/aws/realtime/hex/wallops/9116.1.hex.txt							
8	1488	1.44%	353	0.00%	/data2/ftp/pub/aws/realtime/hex/wallops/9116.2.hex.txt							
9	1488	1.44%	333	0.00%	/data2/ftp/pub/aws/realtime/hex/wallops/9116.3.hex.txt							
10	1488	1.44%	323	0.00%	/data2/ftp/pub/aws/realtime/hex/wallops/9116.4.hex.txt							
11	1488	1.44%	264	0.00%	/data2/ftp/pub/aws/realtime/hex/wallops/9116.5.hex.txt							
12	1487	1.44%	4	0.00%	/data2/ftp/pub/aws/realtime/hex/gilmore/8926.1.hex.txt							
13	1487	1.44%	7	0.00%	/data2/ftp/pub/aws/realtime/hex/gilmore/8926.3.hex.txt							
14	1487	1.44%	11	0.00%	/data2/ftp/pub/aws/realtime/hex/gilmore/8926.4.hex.txt							
15	1487	1.44%	10	0.00%	/data2/ftp/pub/aws/realtime/hex/gilmore/8926.5.hex.txt							
16	1487	1.44%	5	0.00%	/data2/ftp/pub/aws/realtime/hex/mcmurdo/8926.1.hex.txt							
17	1487	1.44%	6	0.00%	/data2/ftp/pub/aws/realtime/hex/mcmurdo/8926.2.hex.txt							
18	1487	1.44%	4	0.00%	/data2/ftp/pub/aws/realtime/hex/mcmurdo/8926.3.hex.txt							
19	1487	1.44%	4	0.00%	/data2/ftp/pub/aws/realtime/hex/mcmurdo/8926.4.hex.txt							
20	1487	1.44%	8	0.00%	/data2/ftp/pub/aws/realtime/hex/mcmurdo/8926.5.hex.txt							
21	1487	1.44%	9	0.00%	/data2/ftp/pub/aws/realtime/hex/wallops/8926.1.hex.txt							
22	1487	1.44%	3	0.00%	/data2/ftp/pub/aws/realtime/hex/wallops/8926.2.hex.txt							
23	1487	1.44%	6	0.00%	/data2/ftp/pub/aws/realtime/hex/wallops/8926.3.hex.txt							
24	1487	1.44%	1	0.00%	/data2/ftp/pub/aws/realtime/hex/wallops/8926.4.hex.txt							
25	1487	1.44%	7	0.00%	/data2/ftp/pub/aws/realtime/hex/wallops/8926.5.hex.txt							
26	142	0.14%	1405	0.00%	/data2/ftp/pub/aws/iridium/GerlacheStrait/2016/05/GerlacheStrait.20160516.txt							
27	142	0.14%	1364	0.00%	/data2/ftp/pub/aws/iridium/GerlacheStrait/2016/05/GerlacheStrait.20160517.txt							
28	142	0.14%	1298	0.00%	/data2/ftp/pub/aws/iridium/GerlacheStrait/2016/05/GerlacheStrait.20160523.txt							
29	141	0.14%	1330	0.00%	/data2/ftp/pub/aws/iridium/GerlacheStrait/2016/05/GerlacheStrait.20160503.txt							
30	141	0.14%	1339	0.00%	/data2/ftp/pub/aws/iridium/GerlacheStrait/2016/05/GerlacheStrait.20160505.txt							

[View All URLs](#)

Top 10 of 35490 Total URLs By KBytes												
#	Hits		KBytes		URL							

1	3	0.00%	112714	0.25%	/data2/ftp/pub/mcmurdo/NCDC/surface/NCDC_Tape2.xls
2	2	0.00%	88388	0.20%	/data2/ftp/archive/movies/Iceberg_Movies/684X694/ICEBERG684X694_MODIS07_2fps.mov
3	2	0.00%	66610	0.15%	/data2/ftp/archive/movies/Iceberg_Movies/684X694/ICEBERG684X694_MODIS07_6fps.mov
4	1	0.00%	56920	0.13%	/data2/ftp/pub/southpole/NCDC/surface/NCDC_Tape7b.xls
5	2	0.00%	52281	0.12%	/data2/ftp/archive/2010/10287/Arctic.Composite.5km.WaterVapor.2010.10.14.00Z.nc.gz
6	1	0.00%	48048	0.11%	/data2/ftp/archive/movies/Iceberg_Movies/600X800/ICEBERG600X800_MODIS04_2fps.mov
7	1	0.00%	47424	0.11%	/data2/ftp/pub/CompProj/1024/CompIR_stand.mov
8	1	0.00%	47200	0.11%	/data2/ftp/archive/movies/Iceberg_Movies/600X800/ICEBERG600X800_MODIS07_6fps.mov
9	1	0.00%	45376	0.10%	/data2/ftp/archive/movies/Iceberg_Movies/600X800/ICEBERG600X800_MODIS04_6fps.mov
10	2	0.00%	36720	0.08%	/data2/ftp/archive/2006/06184/Antarctic.Composite.5km.Visible.2006.07.03.14Z.nc.gz

Top 30 of 344 Total Sites									
#	Hits		Files		KBytes		Visits		Hostname
1	57398	55.61%	57398	56.51%	1057928	2.36%	0	0.00%	bslscene.nerc-bas.ac.uk
2	11342	10.99%	11342	11.17%	1448403	3.22%	10	2.37%	default-rdns.callplus.co.nz
3	8382	8.12%	8382	8.25%	6811	0.02%	0	0.00%	::ffff:144.3.100.97
4	5643	5.47%	5643	5.56%	9745018	21.70%	43	10.19%	crawl-66-249-75-194.googlebot.com
5	2040	1.98%	2040	2.01%	3111047	6.93%	0	0.00%	::ffff:101.231.140.172
6	1841	1.78%	1841	1.81%	5571826	12.41%	28	6.64%	crawl-66-249-69-67.googlebot.com
7	1652	1.60%	1652	1.63%	2457184	5.47%	39	9.24%	crawl-66-249-75-157.googlebot.com
8	811	0.79%	811	0.80%	412384	0.92%	14	3.32%	crawl-66-249-75-202.googlebot.com
9	806	0.78%	806	0.79%	1527229	3.40%	25	5.92%	crawl-66-249-69-30.googlebot.com
10	726	0.70%	726	0.71%	474468	1.06%	17	4.03%	crawl-66-249-75-210.googlebot.com
11	697	0.68%	697	0.69%	452342	1.01%	10	2.37%	crawl-66-249-75-165.googlebot.com
12	679	0.66%	679	0.67%	50498	0.11%	0	0.00%	cpe-66-66-188-19.rochester.res.rr.com
13	679	0.66%	679	0.67%	2880330	6.41%	17	4.03%	crawl-66-249-66-118.googlebot.com
14	604	0.59%	604	0.59%	57152	0.13%	1	0.24%	nat-76-1.casaccia.enea.it
15	559	0.54%	559	0.55%	443844	0.99%	13	3.08%	crawl-66-249-75-173.googlebot.com
16	536	0.52%	536	0.53%	13484	0.03%	1	0.24%	eld-imac.sfos.uaf.edu
17	372	0.36%	372	0.37%	88432	0.20%	12	2.84%	75.77.22.66.nw.nuvox.net
18	324	0.31%	324	0.32%	697569	1.55%	1	0.24%	crawl-66-249-75-244.googlebot.com
19	298	0.29%	298	0.29%	314969	0.70%	7	1.66%	crawl-66-249-65-66.googlebot.com
20	283	0.27%	283	0.28%	11468	0.03%	0	0.00%	::ffff:203.250.179.193
21	274	0.27%	274	0.27%	999645	2.23%	10	2.37%	crawl-66-249-66-62.googlebot.com
22	273	0.26%	273	0.27%	147419	0.33%	6	1.42%	crawl-66-249-69-75.googlebot.com
23	271	0.26%	271	0.27%	30979	0.07%	2	0.47%	sundowner.colorado.edu
24	241	0.23%	241	0.24%	649494	1.45%	5	1.18%	crawl-66-249-65-3.googlebot.com
25	198	0.19%	198	0.19%	66375	0.15%	1	0.24%	crawl-66-249-69-83.googlebot.com
26	192	0.19%	192	0.19%	878848	1.96%	3	0.71%	crawl-66-249-79-173.googlebot.com
27	184	0.18%	184	0.18%	691309	1.54%	10	2.37%	crawl-66-249-79-84.googlebot.com
28	167	0.16%	167	0.16%	564953	1.26%	2	0.47%	crawl-66-249-64-3.googlebot.com
29	154	0.15%	154	0.15%	4103	0.01%	0	0.00%	manini.soest.hawaii.edu
30	153	0.15%	153	0.15%	78440	0.17%	9	2.13%	crawl-66-249-69-38.googlebot.com

[View All Sites](#)

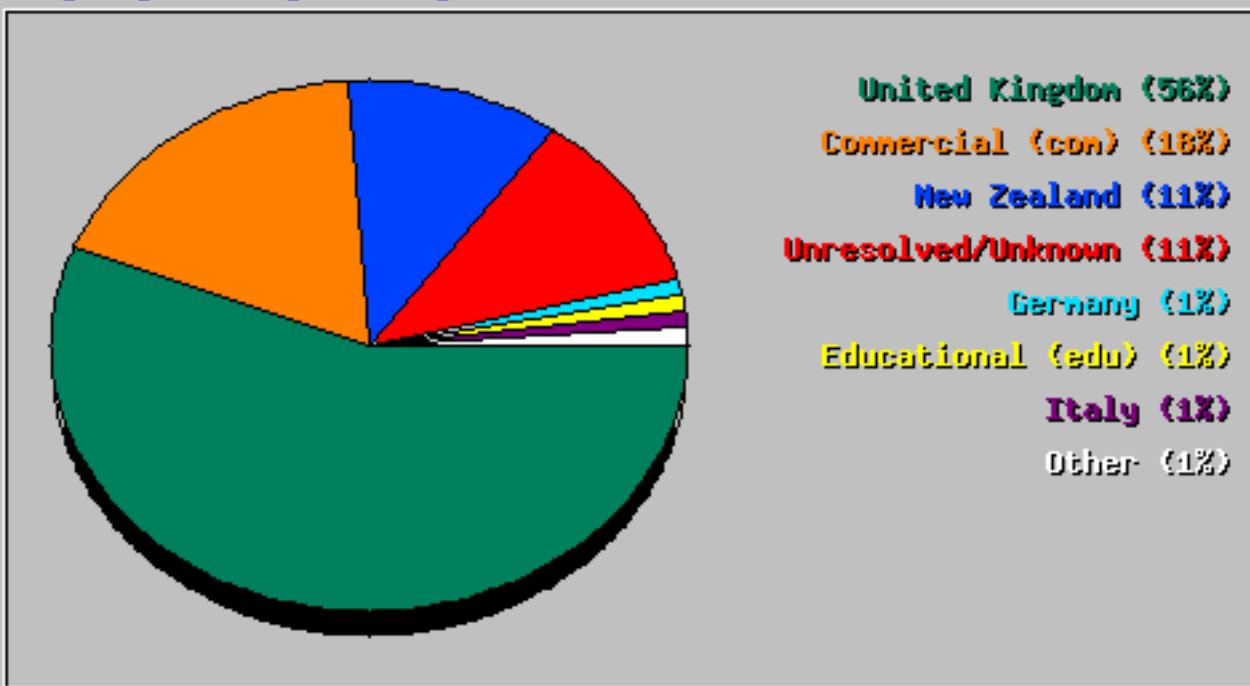
Top 10 of 344 Total Sites By KBytes

#	Hits		Files		KBytes		Visits		Hostname
1	5643	5.47%	5643	5.56%	9745018	21.70%	43	10.19%	crawl-66-249-75-194.googlebot.com
2	1841	1.78%	1841	1.81%	5571826	12.41%	28	6.64%	crawl-66-249-69-67.googlebot.com
3	2040	1.98%	2040	2.01%	3111047	6.93%	0	0.00%	::ffff:101.231.140.172
4	679	0.66%	679	0.67%	2880330	6.41%	17	4.03%	crawl-66-249-66-118.googlebot.com
5	1652	1.60%	1652	1.63%	2457184	5.47%	39	9.24%	crawl-66-249-75-157.googlebot.com
6	806	0.78%	806	0.79%	1527229	3.40%	25	5.92%	crawl-66-249-69-30.googlebot.com
7	11342	10.99%	11342	11.17%	1448403	3.22%	10	2.37%	default-rdns.callplus.co.nz
8	57398	55.61%	57398	56.51%	1057928	2.36%	0	0.00%	bslscene.nerc-bas.ac.uk
9	274	0.27%	274	0.27%	999645	2.23%	10	2.37%	crawl-66-249-66-62.googlebot.com
10	89	0.09%	89	0.09%	946585	2.11%	0	0.00%	crawl-66-249-69-192.googlebot.com

Top 19 of 19 Total Usernames

#	Hits		Files		KBytes		Visits		Username
1	18991	18.40%	18991	18.70%	694897	1.55%	1	0.24%	src@bas.ac.uk
2	18064	17.50%	18064	17.79%	35789366	79.68%	176	41.71%	googlebot@google.com
3	9996	9.68%	9996	9.84%	1434703	3.19%	10	2.37%	IEUser@
4	3183	3.08%	3183	3.13%	2381383	5.30%	5	1.18%	User@
5	1557	1.51%	1557	1.53%	515196	1.15%	30	7.11%	mozilla@example.com
6	1222	1.18%	1222	1.20%	359686	0.80%	1	0.24%	src@
7	670	0.65%	670	0.66%	64454	0.14%	1	0.24%	anon@localhost
8	528	0.51%	528	0.52%	11672	0.03%	2	0.47%	eldobbins@alaska.edu
9	484	0.47%	484	0.48%	285472	0.64%	13	3.08%	chrome@example.com
10	120	0.12%	120	0.12%	14039	0.03%	1	0.24%	palmer
11	109	0.11%	109	0.11%	10060	0.02%	7	1.66%	Squid@
12	76	0.07%	76	0.07%	153434	0.34%	2	0.47%	cfnetwork@apple.com
13	14	0.01%	14	0.01%	146	0.00%	1	0.24%	fireftp@example.com
14	9	0.01%	9	0.01%	13504	0.03%	1	0.24%	southpole
15	5	0.00%	5	0.00%	180	0.00%	1	0.24%	proxy@
16	2	0.00%	2	0.00%	167	0.00%	1	0.24%	ftp@example.com
17	1	0.00%	1	0.00%	3	0.00%	1	0.24%	Websense@
18	1	0.00%	1	0.00%	108	0.00%	1	0.24%	anonymous
19	1	0.00%	1	0.00%	1	0.00%	1	0.24%	itd-proxy@ml.itg.hitachi.co.jp

Usage by Country for May 2016



Top 25 of 25 Total Countries

#	Hits		Files		KBytes		Country
1	57447	55.66%	57447	56.56%	1089499	2.43%	United Kingdom
2	18855	18.27%	18855	18.56%	35843610	79.80%	Commercial (com)
3	11344	10.99%	11344	11.17%	1448445	3.22%	New Zealand
4	11171	10.82%	11171	11.00%	3526079	7.85%	Unresolved/Unknown
5	1485	1.44%	1485	1.46%	2352835	5.24%	Germany
6	1369	1.33%	1369	1.35%	407114	0.91%	Educational (edu)
7	614	0.59%	614	0.60%	57293	0.13%	Italy
8	436	0.42%	436	0.43%	96775	0.22%	Network (net)
9	224	0.22%	224	0.22%	39065	0.09%	France
10	129	0.12%	129	0.13%	27542	0.06%	US Government (gov)
11	83	0.08%	83	0.08%	839	0.00%	Austria
12	17	0.02%	17	0.02%	4392	0.01%	Non-Profit (org)
13	10	0.01%	10	0.01%	9278	0.02%	Brazil
14	6	0.01%	6	0.01%	274	0.00%	Russian Federation
15	5	0.00%	5	0.00%	9488	0.02%	Argentina
16	5	0.00%	5	0.00%	694	0.00%	India
17	4	0.00%	4	0.00%	200	0.00%	Japan
18	3	0.00%	3	0.00%	434	0.00%	International (int)
19	3	0.00%	3	0.00%	3	0.00%	US Military (mil)
20	1	0.00%	1	0.00%	26	0.00%	Colombia
21	1	0.00%	1	0.00%	141	0.00%	Spain
22	1	0.00%	1	0.00%	6	0.00%	Mexico
23	1	0.00%	1	0.00%	3	0.00%	Peru
24	1	0.00%	1	0.00%	4	0.00%	Serbia
25	1	0.00%	1	0.00%	15	0.00%	Turkey

