

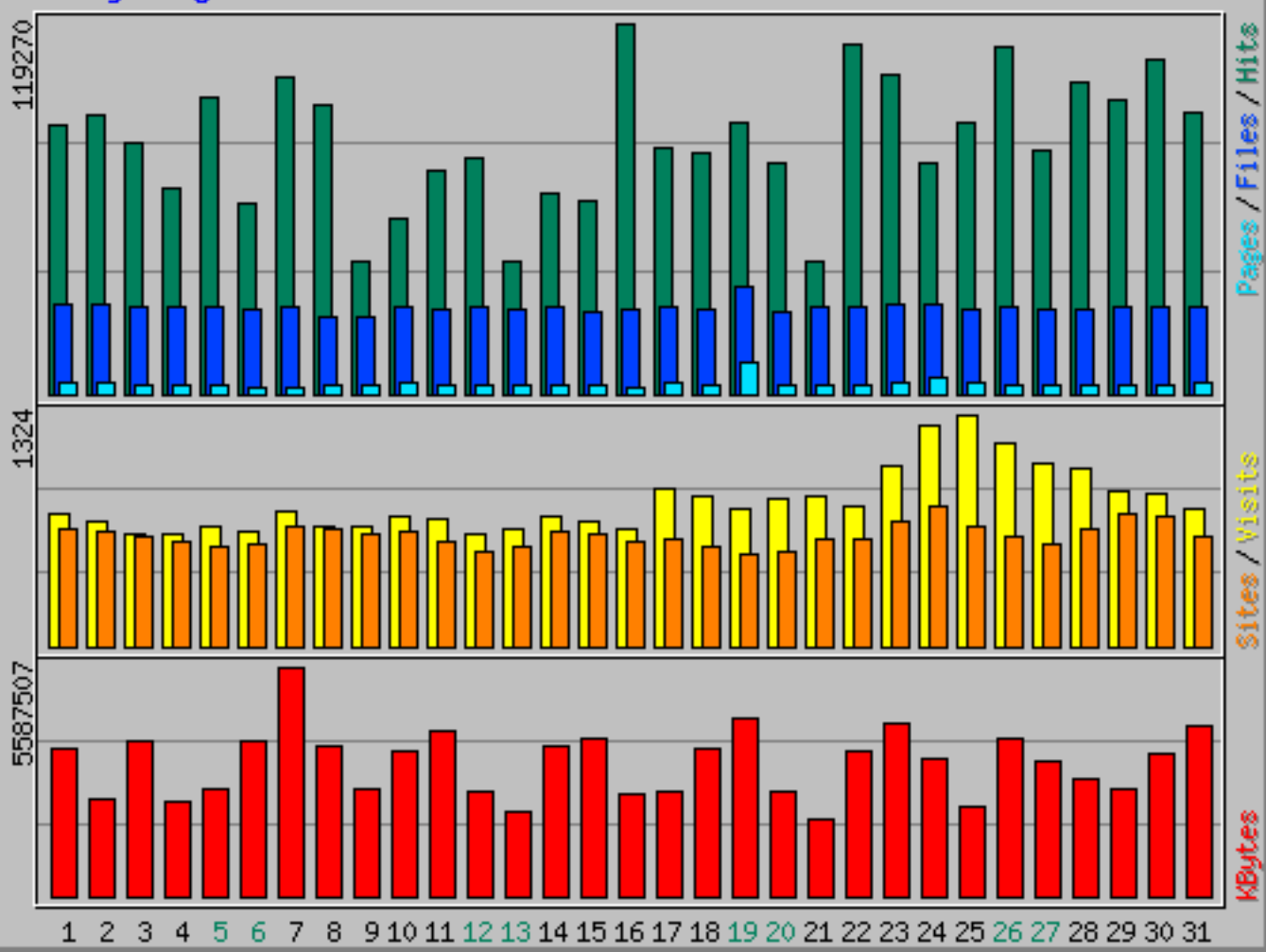
Usage Statistics for amrc.ssec.wisc.edu

Summary Period: December 2015
Generated 01-Jan-2016 01:02 UTC

[\[Daily Statistics\]](#) [\[Hourly Statistics\]](#) [\[URLs\]](#) [\[Entry\]](#) [\[Exit\]](#) [\[Sites\]](#) [\[Referrers\]](#) [\[Search\]](#) [\[Agents\]](#) [\[Countries\]](#)

Monthly Statistics for December 2015		
Total Hits	2527834	
Total Files	863563	
Total Pages	100819	
Total Visits	25403	
Total KBytes	100819813	
Total Unique Sites	10400	
Total Unique URLs	29270	
Total Unique Referrers	1206	
Total Unique User Agents	482	
	Avg	Max
Hits per Hour	3397	23438
Hits per Day	81543	119270
Files per Day	27856	34135
Pages per Day	3252	9769
Sites per Day	335	798
Visits per Day	819	1324
KBytes per Day	3252252	5587507
Hits by Response Code		
Code 200 - OK	34.16%	863563
Code 206 - Partial Content	0.40%	10135
Code 301 - Moved Permanently	0.09%	2260
Code 302 - Found	0.02%	440
Code 304 - Not Modified	0.73%	18445
Code 400 - Bad Request	0.01%	131
Code 401 - Unauthorized	0.00%	19
Code 403 - Forbidden	0.01%	349
Code 404 - Not Found	64.58%	1632409
Code 405 - Method Not Allowed	0.00%	17
Code 500 - Internal Server Error	0.00%	56
Code 501 - Not Implemented	0.00%	10

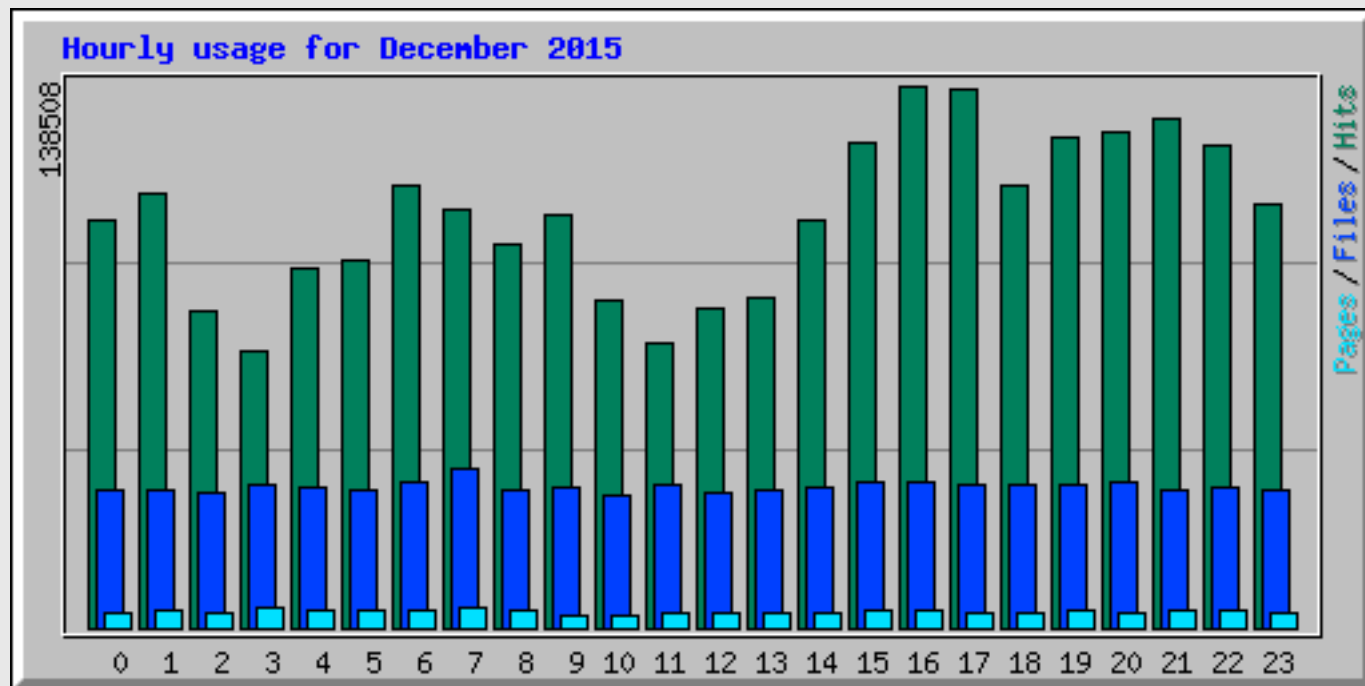
Daily usage for December 2015



Daily Statistics for December 2015

Day	Hits		Files		Pages		Visits		Sites		KBytes	
1	86149	3.41%	28815	3.34%	3726	3.70%	752	2.96%	675	6.49%	3616301	3.59%
2	89447	3.54%	28976	3.36%	3413	3.39%	714	2.81%	661	6.36%	2369904	2.35%
3	80502	3.18%	27919	3.23%	2486	2.47%	647	2.55%	633	6.09%	3780485	3.75%
4	65805	2.60%	28204	3.27%	2779	2.76%	645	2.54%	596	5.73%	2272747	2.25%
5	95643	3.78%	28339	3.28%	3217	3.19%	689	2.71%	575	5.53%	2593140	2.57%
6	61279	2.42%	27453	3.18%	2006	1.99%	648	2.55%	583	5.61%	3792399	3.76%
7	101445	4.01%	27808	3.22%	2363	2.34%	764	3.01%	688	6.62%	5587507	5.54%
8	92825	3.67%	24944	2.89%	2834	2.81%	685	2.70%	671	6.45%	3646029	3.62%
9	42559	1.68%	25099	2.91%	2720	2.70%	689	2.71%	642	6.17%	2593605	2.57%
10	56103	2.22%	28094	3.25%	3363	3.34%	742	2.92%	648	6.23%	3536386	3.51%
11	71487	2.83%	27537	3.19%	2872	2.85%	725	2.85%	601	5.78%	4013930	3.98%
12	75553	2.99%	27635	3.20%	2476	2.46%	635	2.50%	543	5.22%	2553411	2.53%
13	42617	1.69%	27342	3.17%	2774	2.75%	671	2.64%	574	5.52%	2050678	2.03%
14	64159	2.54%	28167	3.26%	2728	2.71%	735	2.89%	658	6.33%	3645218	3.62%
15	61742	2.44%	26764	3.10%	2750	2.73%	712	2.80%	646	6.21%	3846674	3.82%
16	119270	4.72%	26776	3.10%	2250	2.23%	676	2.66%	599	5.76%	2460057	2.44%
17	79166	3.13%	28134	3.26%	3619	3.59%	895	3.52%	617	5.93%	2578636	2.56%
18	77453	3.06%	27268	3.16%	2957	2.93%	850	3.35%	572	5.50%	3620639	3.59%
19	87572	3.46%	34135	3.95%	9769	9.69%	789	3.11%	531	5.11%	4353045	4.32%
20	74050	2.93%	26578	3.08%	2805	2.78%	843	3.32%	535	5.14%	2521342	2.50%
21	42939	1.70%	27953	3.24%	2884	2.86%	860	3.39%	615	5.91%	1889059	1.87%
22	112267	4.44%	27662	3.20%	2892	2.87%	805	3.17%	609	5.86%	3548916	3.52%
23	102684	4.06%	28534	3.30%	3487	3.46%	1026	4.04%	715	6.88%	4221956	4.19%

24	74323	2.94%	29146	3.38%	5444	5.40%	1262	4.97%	798	7.67%	3341754	3.31%
25	87557	3.46%	27549	3.19%	3913	3.88%	1324	5.21%	689	6.62%	2175305	2.16%
26	111650	4.42%	28150	3.26%	3160	3.13%	1160	4.57%	631	6.07%	3842531	3.81%
27	78356	3.10%	27162	3.15%	3063	3.04%	1043	4.11%	585	5.62%	3267205	3.24%
28	99931	3.95%	27191	3.15%	2841	2.82%	1015	4.00%	668	6.42%	2839400	2.82%
29	94677	3.75%	27924	3.23%	2887	2.86%	886	3.49%	759	7.30%	2629868	2.61%
30	107766	4.26%	28372	3.29%	2818	2.80%	869	3.42%	748	7.19%	3498629	3.47%
31	90858	3.59%	27933	3.23%	3523	3.49%	785	3.09%	632	6.08%	4133054	4.10%



Hourly Statistics for December 2015

Hour	Hits			Files			Pages			KBytes		
	Avg	Total		Avg	Total		Avg	Total		Avg	Total	
0	3367	104386	4.13%	1142	35416	4.10%	128	3998	3.97%	133055	4124713	4.09%
1	3580	110982	4.39%	1127	34955	4.05%	132	4115	4.08%	139526	4325305	4.29%
2	2598	80539	3.19%	1110	34425	3.99%	122	3807	3.78%	98246	3045619	3.02%
3	2287	70920	2.81%	1168	36233	4.20%	169	5251	5.21%	114874	3561102	3.53%
4	2964	91902	3.64%	1147	35573	4.12%	148	4602	4.56%	114607	3552816	3.52%
5	3036	94136	3.72%	1144	35471	4.11%	154	4774	4.74%	93948	2912402	2.89%
6	3640	112841	4.46%	1205	37382	4.33%	149	4649	4.61%	126483	3920965	3.89%
7	3438	106583	4.22%	1299	40284	4.66%	172	5340	5.30%	135585	4203132	4.17%
8	3157	97877	3.87%	1128	34972	4.05%	136	4229	4.19%	99513	3084897	3.06%
9	3394	105221	4.16%	1155	35816	4.15%	106	3314	3.29%	85730	2657641	2.64%
10	2702	83773	3.31%	1092	33873	3.92%	105	3278	3.25%	88038	2729191	2.71%
11	2343	72638	2.87%	1166	36169	4.19%	120	3745	3.71%	98991	3068723	3.04%
12	2627	81451	3.22%	1121	34775	4.03%	116	3597	3.57%	102652	3182197	3.16%
13	2708	83973	3.32%	1135	35205	4.08%	117	3636	3.61%	86088	2668713	2.65%
14	3357	104083	4.12%	1148	35602	4.12%	127	3962	3.93%	121814	3776236	3.75%
15	4002	124062	4.91%	1200	37222	4.31%	151	4687	4.65%	195918	6073452	6.02%
16	4468	138508	5.48%	1201	37239	4.31%	145	4514	4.48%	219369	6800442	6.75%
17	4436	137530	5.44%	1175	36440	4.22%	128	3990	3.96%	206392	6398147	6.35%
18	3652	113219	4.48%	1170	36300	4.20%	128	3982	3.95%	186115	5769553	5.72%
19	4039	125231	4.95%	1166	36172	4.19%	139	4313	4.28%	173106	5366275	5.32%
			5.02%			4.33%			3.97%			5.81%

20	4093	126893		1205	37366		129	3999		188844	5854150	
21	4189	129889	5.14%	1144	35464	4.11%	137	4247	4.21%	173372	5374533	5.33%
22	3970	123078	4.87%	1162	36039	4.17%	153	4751	4.71%	149787	4643408	4.61%
23	3487	108119	4.28%	1134	35170	4.07%	130	4039	4.01%	120200	3726200	3.70%

Top 30 of 29270 Total URLs												
#	Hits		KBytes		URL							
1	30934	1.22%	386588	0.38%	/aws/							
2	16308	0.65%	129464	0.13%	/data/view-data.php							
3	14953	0.59%	102234	0.10%	/data/surface/awstext/8903.txt							
4	14920	0.59%	36150	0.04%	/data/surface/awstext/8921.txt							
5	14216	0.56%	97498	0.10%	/data/surface/awstext/8905.txt							
6	14214	0.56%	83082	0.08%	/data/surface/awstext/8913.txt							
7	14212	0.56%	66759	0.07%	/data/surface/awstext/8916.txt							
8	14211	0.56%	94527	0.09%	/data/surface/awstext/8911.txt							
9	14210	0.56%	95559	0.09%	/data/surface/awstext/8906.txt							
10	14209	0.56%	65416	0.06%	/data/surface/awstext/8912.txt							
11	14209	0.56%	74324	0.07%	/data/surface/awstext/8914.txt							
12	14208	0.56%	100662	0.10%	/data/surface/awstext/8904.txt							
13	14207	0.56%	16619	0.02%	/data/surface/awstext/8900.txt							
14	14179	0.56%	19683	0.02%	/data/surface/awstext/21358.txt							
15	14175	0.56%	111570	0.11%	/data/surface/awstext/8985.txt							
16	14174	0.56%	105899	0.11%	/data/surface/awstext/8924.txt							
17	14174	0.56%	103700	0.10%	/data/surface/awstext/8927.txt							
18	14174	0.56%	97114	0.10%	/data/surface/awstext/8947.txt							
19	14174	0.56%	2436	0.00%	/data/surface/awstext/8981.txt							
20	14173	0.56%	93663	0.09%	/data/surface/awstext/8988.txt							
21	14172	0.56%	103087	0.10%	/data/surface/awstext/30393.txt							
22	14172	0.56%	64311	0.06%	/data/surface/awstext/8918.txt							
23	14171	0.56%	108782	0.11%	/data/surface/awstext/21361.txt							
24	14171	0.56%	95918	0.10%	/data/surface/awstext/8934.txt							
25	14170	0.56%	107201	0.11%	/data/surface/awstext/21357.txt							
26	14170	0.56%	82576	0.08%	/data/surface/awstext/8928.txt							
27	14169	0.56%	79652	0.08%	/data/surface/awstext/8984.txt							
28	14169	0.56%	88285	0.09%	/data/surface/awstext/8989.txt							
29	14167	0.56%	49742	0.05%	/data/surface/awstext/9116.txt							
30	14078	0.56%	157024	0.16%	/data/surface/awstext/PegasusNorth.txt							
View All URLs												

Top 10 of 29270 Total URLs By KBytes												
#	Hits		KBytes		URL							
1	14	0.00%	2156179	2.14%	/data/satellite/composite/ant.ir.anim.kmz							
2	3	0.00%	1769766	1.76%	/data/internal/mattl/Penguins2007.dv							
3	9	0.00%	1234647	1.22%	/meetings/meeting_05/talks/archer.ppt							
4	9	0.00%	1172114	1.16%	/usap/byrd/1957-1972.txt							

5	1576	0.06%	1138785	1.13%	/aws/documents/fieldreports/aws_fldrpt0607.pdf
6	14	0.00%	1112176	1.10%	/aws/documents/fieldreports/aws_fldrpt1011.pdf
7	10	0.00%	1082204	1.07%	/presentations/Lazzara-PastAWSFieldSeason-AMOMFW2011.pdf
8	14	0.00%	1067543	1.06%	/meetings/meeting2015/presentations/AMOMF-Day1/AMOMFW2015_stationtalk.pdf
9	9	0.00%	1044697	1.04%	/meetings/meeting2015/presentations/AMOMF-Day1/AMOMFW-2015-AWS-Future.pdf
10	21	0.00%	913717	0.91%	/aws/documents/fieldreports/aws_fldrpt0809.pdf

Top 10 of 357 Total Entry Pages					
#	Hits		Visits		URL
1	30934	1.22%	5645	26.50%	/aws/
2	7386	0.29%	5514	25.89%	/
3	16308	0.65%	3595	16.88%	/data/view-data.php
4	1046	0.04%	1002	4.70%	/blog/feed/
5	1456	0.06%	694	3.26%	/data/
6	3381	0.13%	652	3.06%	/aws/map.php
7	788	0.03%	445	2.09%	/blog/
8	3235	0.13%	384	1.80%	/news/
9	380	0.02%	298	1.40%	/repository/user/login
10	215	0.01%	191	0.90%	/blog/wp-cron.php

Top 10 of 377 Total Exit Pages					
#	Hits		Visits		URL
1	30934	1.22%	5615	25.29%	/aws/
2	7386	0.29%	4922	22.17%	/
3	16308	0.65%	3957	17.82%	/data/view-data.php
4	1046	0.04%	999	4.50%	/blog/feed/
5	754	0.03%	741	3.34%	/data/surface/awstext/
6	3381	0.13%	668	3.01%	/aws/map.php
7	1456	0.06%	521	2.35%	/data/
8	3235	0.13%	431	1.94%	/news/
9	788	0.03%	376	1.69%	/blog/
10	505	0.02%	330	1.49%	/news/2010-May-01.html

Top 100 of 10400 Total Sites									
#	Hits		Files		KBytes		Visits		Hostname
1	599887	23.73%	583263	67.54%	3541967	3.51%	0	0.00%	bslcene.nerc-bas.ac.uk
2	91800	3.63%	0	0.00%	422692	0.42%	0	0.00%	tropopause.aos.wisc.edu
3	63705	2.52%	0	0.00%	293329	0.29%	0	0.00%	60.13.132.38
4	61116	2.42%	0	0.00%	281408	0.28%	0	0.00%	123.57.235.37
5	55727	2.20%	54933	6.36%	286585	0.28%	740	2.91%	wahoo.mmm.ucar.edu
6	44624	1.77%	0	0.00%	205471	0.20%	0	0.00%	123.57.71.159
7	34917	1.38%	0	0.00%	160775	0.16%	0	0.00%	182.92.130.232
8	28752	1.14%	0	0.00%	132388	0.13%	0	0.00%	120.25.67.33

9	26228	1.04%	0	0.00%	120767	0.12%	0	0.00%	123.57.175.199
10	26008	1.03%	0	0.00%	119754	0.12%	0	0.00%	123.57.93.56
11	26006	1.03%	0	0.00%	119744	0.12%	0	0.00%	101.200.127.203
12	24579	0.97%	0	0.00%	113174	0.11%	0	0.00%	139.129.97.186
13	23394	0.93%	0	0.00%	107717	0.11%	0	0.00%	114.215.87.57
14	22646	0.90%	0	0.00%	104273	0.10%	0	0.00%	123.57.249.178
15	21749	0.86%	0	0.00%	100143	0.10%	0	0.00%	101.200.204.17
16	21014	0.83%	0	0.00%	96759	0.10%	0	0.00%	120.26.227.63
17	20571	0.81%	0	0.00%	94719	0.09%	0	0.00%	221.4.169.197
18	18646	0.74%	0	0.00%	85855	0.09%	0	0.00%	123.56.162.231
19	17521	0.69%	0	0.00%	80675	0.08%	0	0.00%	123.57.153.215
20	17483	0.69%	0	0.00%	80500	0.08%	0	0.00%	101.200.128.222
21	17482	0.69%	0	0.00%	80496	0.08%	0	0.00%	123.57.212.97
22	17475	0.69%	0	0.00%	80464	0.08%	0	0.00%	182.92.157.120
23	17469	0.69%	0	0.00%	80436	0.08%	0	0.00%	101.201.143.194
24	17379	0.69%	0	0.00%	80021	0.08%	0	0.00%	101.201.221.21
25	17358	0.69%	0	0.00%	79925	0.08%	0	0.00%	123.56.226.14
26	17294	0.68%	0	0.00%	79630	0.08%	0	0.00%	101.200.127.50
27	17248	0.68%	0	0.00%	79418	0.08%	0	0.00%	123.56.130.80
28	17241	0.68%	0	0.00%	79386	0.08%	0	0.00%	222.89.179.103
29	17213	0.68%	0	0.00%	79257	0.08%	0	0.00%	123.56.97.81
30	17028	0.67%	0	0.00%	78405	0.08%	0	0.00%	120.27.194.125
31	17027	0.67%	0	0.00%	78401	0.08%	0	0.00%	112.74.211.85
32	17023	0.67%	0	0.00%	78382	0.08%	0	0.00%	113.108.189.40
33	16967	0.67%	0	0.00%	78124	0.08%	0	0.00%	222.42.146.225
34	16833	0.67%	0	0.00%	77507	0.08%	0	0.00%	182.92.81.213
35	15103	0.60%	0	0.00%	69542	0.07%	0	0.00%	121.42.197.75
36	14161	0.56%	0	0.00%	65204	0.06%	0	0.00%	120.24.51.125
37	13684	0.54%	0	0.00%	63008	0.06%	0	0.00%	123.56.176.17
38	13570	0.54%	0	0.00%	62483	0.06%	0	0.00%	139.196.52.214
39	13329	0.53%	0	0.00%	61373	0.06%	0	0.00%	121.43.104.78
40	13221	0.52%	0	0.00%	60876	0.06%	0	0.00%	123.57.141.93
41	13023	0.52%	0	0.00%	59964	0.06%	0	0.00%	120.25.240.195
42	12940	0.51%	0	0.00%	59582	0.06%	0	0.00%	123.56.234.139
43	11904	0.47%	0	0.00%	0	0.00%	744	2.93%	birch.ssec.wisc.edu
44	11875	0.47%	0	0.00%	54678	0.05%	0	0.00%	120.26.221.37
45	11784	0.47%	10430	1.21%	4265306	4.23%	88	0.35%	b115325.yse.yahoo.net
46	10747	0.43%	0	0.00%	49484	0.05%	0	0.00%	123.56.232.213
47	10678	0.42%	0	0.00%	49167	0.05%	0	0.00%	120.27.163.186
48	10056	0.40%	0	0.00%	46303	0.05%	0	0.00%	139.196.36.6
49	9564	0.38%	0	0.00%	44037	0.04%	0	0.00%	139.196.5.236
50	9037	0.36%	0	0.00%	41611	0.04%	0	0.00%	183.24.141.132
51	8875	0.35%	0	0.00%	40865	0.04%	0	0.00%	60.13.214.247
52	8770	0.35%	0	0.00%	40381	0.04%	0	0.00%	115.29.200.55
53	8762	0.35%	0	0.00%	40345	0.04%	0	0.00%	139.196.4.19
54	8748	0.35%	0	0.00%	40280	0.04%	0	0.00%	123.56.178.51
55	8748	0.35%	0	0.00%	40280	0.04%	0	0.00%	139.196.49.165

56	8747	0.35%	0	0.00%	40275	0.04%	0	0.00%	112.74.133.46
57	8746	0.35%	0	0.00%	40271	0.04%	0	0.00%	120.27.29.133
58	8746	0.35%	0	0.00%	40271	0.04%	0	0.00%	120.55.241.189
59	8734	0.35%	0	0.00%	40216	0.04%	0	0.00%	46.1.17.218.broad.sz.gd.dynamic.163data.com.cn
60	8730	0.35%	0	0.00%	40197	0.04%	0	0.00%	182.92.223.90
61	8729	0.35%	0	0.00%	40193	0.04%	0	0.00%	101.200.206.154
62	8727	0.35%	0	0.00%	40183	0.04%	0	0.00%	101.200.195.115
63	8727	0.35%	0	0.00%	40183	0.04%	0	0.00%	123.57.23.24
64	8725	0.35%	0	0.00%	40174	0.04%	0	0.00%	101.200.125.88
65	8725	0.35%	0	0.00%	40174	0.04%	0	0.00%	182.92.188.122
66	8724	0.35%	0	0.00%	40170	0.04%	0	0.00%	223.100.204.65
67	8721	0.34%	0	0.00%	40156	0.04%	0	0.00%	123.56.131.139
68	8721	0.34%	0	0.00%	40156	0.04%	0	0.00%	123.57.164.221
69	8677	0.34%	0	0.00%	39953	0.04%	0	0.00%	139.196.188.209
70	8663	0.34%	0	0.00%	39889	0.04%	0	0.00%	120.27.145.84
71	8645	0.34%	0	0.00%	39806	0.04%	0	0.00%	115.28.220.254
72	8635	0.34%	0	0.00%	39760	0.04%	0	0.00%	120.24.160.23
73	8635	0.34%	0	0.00%	39760	0.04%	0	0.00%	123.56.97.248
74	8614	0.34%	0	0.00%	39663	0.04%	0	0.00%	91.121.232.209
75	8570	0.34%	0	0.00%	39460	0.04%	0	0.00%	114.215.204.128
76	8561	0.34%	0	0.00%	39419	0.04%	0	0.00%	112.74.23.61
77	8545	0.34%	0	0.00%	39345	0.04%	0	0.00%	101.201.148.13
78	8545	0.34%	0	0.00%	39345	0.04%	0	0.00%	121.26.227.252
79	8524	0.34%	0	0.00%	39249	0.04%	0	0.00%	121.40.93.195
80	8507	0.34%	0	0.00%	39170	0.04%	0	0.00%	116.216.30.7
81	8506	0.34%	0	0.00%	39166	0.04%	0	0.00%	123.56.225.165
82	8495	0.34%	0	0.00%	39115	0.04%	0	0.00%	123.56.121.53
83	8494	0.34%	0	0.00%	39111	0.04%	0	0.00%	58.30.248.217
84	8493	0.34%	0	0.00%	39106	0.04%	0	0.00%	202.subnet118-97-108.astinet.telkom.net.id
85	8491	0.34%	0	0.00%	39097	0.04%	0	0.00%	112.74.209.175
86	8477	0.34%	0	0.00%	39032	0.04%	0	0.00%	220.165.41.114
87	8473	0.34%	0	0.00%	2449	0.00%	0	0.00%	151.80.185.205
88	8442	0.33%	0	0.00%	38871	0.04%	0	0.00%	112.74.210.191
89	8397	0.33%	0	0.00%	38664	0.04%	0	0.00%	120.25.67.185
90	8226	0.33%	0	0.00%	37877	0.04%	0	0.00%	120.24.255.70
91	8079	0.32%	0	0.00%	37200	0.04%	0	0.00%	121.17.120.98
92	8079	0.32%	0	0.00%	37200	0.04%	0	0.00%	139.196.188.60
93	7866	0.31%	0	0.00%	36219	0.04%	0	0.00%	125.93.83.102
94	7860	0.31%	0	0.00%	36191	0.04%	0	0.00%	117.169.1.125
95	7816	0.31%	0	0.00%	35989	0.04%	0	0.00%	115.29.44.244
96	7731	0.31%	0	0.00%	35597	0.04%	0	0.00%	101.200.191.128
97	7515	0.30%	0	0.00%	34603	0.03%	0	0.00%	61.146.235.122
98	7451	0.29%	7450	0.86%	2303578	2.28%	1	0.00%	polarmet17.mps.ohio-state.edu
99	7311	0.29%	0	0.00%	33663	0.03%	0	0.00%	123.56.70.110
100	7241	0.29%	0	0.00%	33341	0.03%	0	0.00%	121.42.10.133

[View All Sites](#)

Top 10 of 10400 Total Sites By KBytes

#	Hits		Files		KBytes		Visits		Hostname
1	3531	0.14%	3387	0.39%	4453218	4.42%	256	1.01%	spider-199-21-99-212.yandex.com
2	11784	0.47%	10430	1.21%	4265306	4.23%	88	0.35%	b115325.yse.yahoo.net
3	599887	23.73%	583263	67.54%	3541967	3.51%	0	0.00%	bslcene.nerc-bas.ac.uk
4	7451	0.29%	7450	0.86%	2303578	2.28%	1	0.00%	polarmet17.mps.ohio-state.edu
5	283	0.01%	262	0.03%	1779305	1.76%	5	0.02%	f-mkimball-msn-1.msn-coloc.binc.net
6	3955	0.16%	3955	0.46%	1677998	1.66%	0	0.00%	rajja.pair.com
7	848	0.03%	834	0.10%	1005396	1.00%	106	0.42%	baiduspider-180-76-15-24.crawl.baidu.com
8	805	0.03%	797	0.09%	885797	0.88%	103	0.41%	baiduspider-180-76-15-8.crawl.baidu.com
9	776	0.03%	770	0.09%	882747	0.88%	110	0.43%	baiduspider-180-76-15-161.crawl.baidu.com
10	861	0.03%	852	0.10%	880474	0.87%	114	0.45%	baiduspider-180-76-15-12.crawl.baidu.com

Top 30 of 1206 Total Referrers

#	Hits		Referrer
1	2319269	91.75%	- (Direct Request)
2	91800	3.63%	http://sysadm.aos.wisc.edu/~poker/owl-1443/loop.html
3	20442	0.81%	http://amrc.ssec.wisc.edu/data/view-data.php
4	10466	0.41%	http://amrc.ssec.wisc.edu/data/
5	5208	0.21%	nt
6	4912	0.19%	http://arctic.ssec.wisc.edu/data/view-data.php
7	4885	0.19%	https://amrc.ssec.wisc.edu/data/view-data.php
8	4475	0.18%	http://amrc.ssec.wisc.edu/blog/
9	3253	0.13%	http://www.eldoradocountyweather.com/satellite/ssec/antarctica-composite-ir.html
10	3183	0.13%	http://amrc.ssec.wisc.edu/aws/index.php
11	2232	0.09%	http://amrc.ssec.wisc.edu/
12	1625	0.06%	https://amrc.ssec.wisc.edu/
13	1475	0.06%	https://www.google.com
14	1161	0.05%	http://uwamrc.ssec.wisc.edu/data/view-data.php
15	1124	0.04%	https://amrc.ssec.wisc.edu/blog/wp-admin/post.php
16	1083	0.04%	http://uwamrc.ssec.wisc.edu
17	1003	0.04%	https://www.google.com/
18	934	0.04%	http://amrc.ssec.wisc.edu/style.css
19	903	0.04%	http://www.persicetometeo.com/public/artico_monitoring.htm
20	881	0.03%	https://amrc.ssec.wisc.edu/data/
21	838	0.03%	http://www.astroflesz.pl/aktualnosci/newsy/306-jak-dlugo-trwa-lot-na-ksiezyc
22	816	0.03%	http://arctic.ssec.wisc.edu/data/noaa/IR-loop-L/
23	744	0.03%	http://amrc.ssec.wisc.edu/aws/
24	704	0.03%	http://ice.ssec.wisc.edu/data/view-data.php
25	684	0.03%	http://www.adventure-antarctica.de/
26	681	0.03%	http://amrc.ssec.wisc.edu/data/satellite/composite/IRHOURLY-1024/
27	617	0.02%	http://amrc.ssec.wisc.edu/blog/2011/12/28/preliminary-report-record-temperatures-at-south-pole-and-nearby-aws-sites/
28	568	0.02%	http://uwamrc.ssec.wisc.edu/data/
29	553	0.02%	https://amrc.ssec.wisc.edu/repository
30	545	0.02%	http://www.persicetometeo.com/public/antartico_monitoring.htm

Top 16 of 16 Total Search Strings

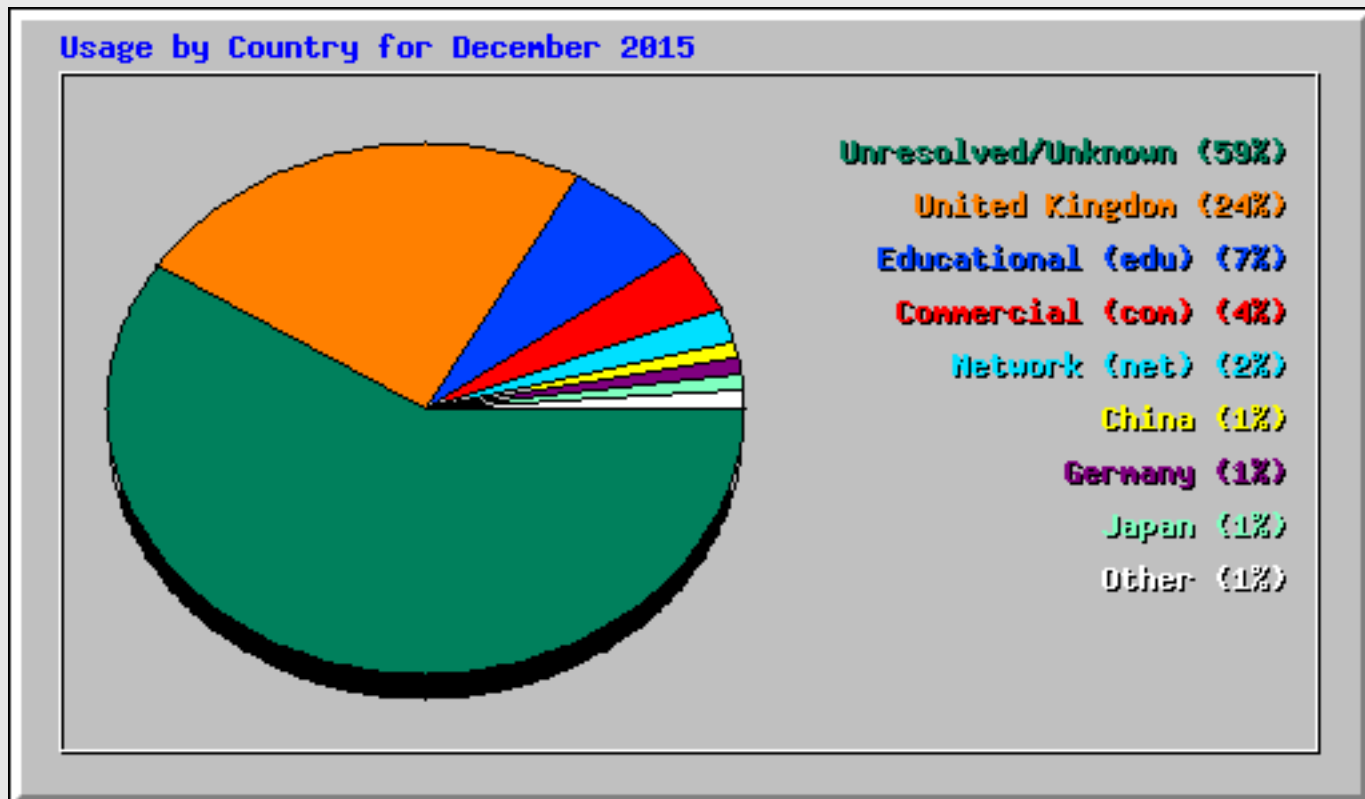
#	Hits		Search String
1	193	91.04%	how to
2	2	0.94%	antarctic weather stations
3	2	0.94%	jessica hamill
4	2	0.94%	open field of snow
5	2	0.94%	santa claus island
6	1	0.47%	64.15 s 60.95 w
7	1	0.47%	amrc satellite
8	1	0.47%	amrc wisconsin
9	1	0.47%	antarctic
10	1	0.47%	antarctic meterology
11	1	0.47%	aws dome c
12	1	0.47%	current weather for university of wisconsin weather station antarctica
13	1	0.47%	diagram of a meteorological station
14	1	0.47%	free proxy checker
15	1	0.47%	linda keller
16	1	0.47%	matthew lazzara

Top 50 of 482 Total User Agents

#	Hits		User Agent
1	1489039	58.91%	MSIE 6
2	599887	23.73%	Wget/1.11.4 Red Hat modified
3	194037	7.68%	Mozilla/5
4	55399	2.19%	Python-urllib/2.6
5	49478	1.96%	Baiduspider/2
6	17968	0.71%	Yahoo! Slurp
7	11904	0.47%	Wget/1.14 (linux-gnu)
8	11618	0.46%	bingbot/2
9	7435	0.29%	Wget/1.16.3 (linux-gnu)
10	6950	0.27%	MegaIndex
11	6635	0.26%	Googlebot/2
12	5418	0.21%	Java/1.8.0_45
13	5208	0.21%	curl/7.19.7 (x86_64-redhat-linux-gnu) libcurl/7.19.7 NSS/3.16.2.3 Basic ECC zlib/1.2.8 libidn/1.18 libssh2/1.4.2
14	3955	0.16%	Wget/1.12 (freebsd8.1)
15	3639	0.14%	MSIE 8
16	3450	0.14%	tbot-nutch/Nutch-1.10
17	2944	0.12%	YandexBot/3
18	1733	0.07%	MSIE 10
19	1450	0.06%	Googlebot-Image/1.0
20	1387	0.05%	Mozilla/4.0 (compatible;)
21	1285	0.05%	SputnikBot/2
22	1154	0.05%	MSIE 9

23	1039	0.04%	YandexImages/3
24	1001	0.04%	spbot/4
25	946	0.04%	facebookexternalhit/1.1 (+http://www.facebook.com/externalhit_uatext.php)
26	924	0.04%	Opera 9
27	830	0.03%	Java/1.7.0_71
28	684	0.03%	Safari/10600.1.25.1 CFNetwork/720.1.1 Darwin/14.0.0 (x86_64)
29	550	0.02%	MSIE 7
30	519	0.02%	WBSearchBot/1
31	488	0.02%	vebidoobot
32	393	0.02%	Sogou web spider/4.0(+http://www.sogou.com/docs/help/webmasters.htm#07)
33	310	0.01%	Mozilla"
34	306	0.01%	Apache/2.2.15 (CentOS) (internal dummy connection)
35	296	0.01%	UniversalFeedParser/5.1.5b +https://code.google.com/p/feedparser/
36	247	0.01%	Feedly/1.0 (+http://www.feedly.com/fetcher.html; like FeedFetcher-Google)
37	232	0.01%	Opera 8
38	227	0.01%	sqlmap/1.0-dev-nongit-20151204 (http://sqlmap.org)
39	204	0.01%	Exabot/3
40	199	0.01%	Opera 10
41	182	0.01%	AhrefsBot/5
42	163	0.01%	DeuSu/5
43	149	0.01%	YisouSpider
44	142	0.01%	Googlebot-M
45	142	0.01%	SputnikImageBot/2
46	132	0.01%	msnbot-media/1.1 (+http://search.msn.com/msnbot.htm)
47	129	0.01%	Twitterbot/1.0
48	129	0.01%	visionutils/0.2
49	126	0.00%	WordPress/4.4; http://amrc.ssec.wisc.edu/blog
50	124	0.00%	Googlebot/2.1 (+http://www.google.com/bot.html)

[View All User Agents](#)



Top 30 of 102 Total Countries

#	Hits		Files		KBytes		Country
1	1485049	58.75%	29812	3.45%	12982478	12.88%	Unresolved/Unknown
2	600671	23.76%	583731	67.60%	3625466	3.60%	United Kingdom
3	174114	6.89%	67693	7.84%	4076831	4.04%	Educational (edu)
4	106501	4.21%	93939	10.88%	54619869	54.18%	Commercial (com)
5	43652	1.73%	38687	4.48%	12253061	12.15%	Network (net)
6	23613	0.93%	184	0.02%	129989	0.13%	China
7	19123	0.76%	18039	2.09%	1686253	1.67%	Germany
8	13326	0.53%	7381	0.85%	3017177	2.99%	Japan
9	10636	0.42%	26	0.00%	49399	0.05%	Indonesia
10	6932	0.27%	100	0.01%	50029	0.05%	Turkey
11	6643	0.26%	6409	0.74%	2224103	2.21%	Italy
12	5239	0.21%	5226	0.61%	2205	0.00%	Generic TLD (info)
13	4135	0.16%	3322	0.38%	550560	0.55%	Argentina
14	3736	0.15%	731	0.08%	118972	0.12%	New Zealand
15	3132	0.12%	1929	0.22%	1348583	1.34%	Russian Federation
16	2896	0.11%	2024	0.23%	823058	0.82%	US Government (gov)
17	2030	0.08%	1687	0.20%	20836	0.02%	European Union
18	1784	0.07%	970	0.11%	482168	0.48%	US Military (mil)
19	1508	0.06%	494	0.06%	76713	0.08%	Poland
20	1258	0.05%	1164	0.13%	186749	0.19%	France
21	1254	0.05%	1210	0.14%	264208	0.26%	Belgium
22	1229	0.05%	1034	0.12%	53435	0.05%	Brazil
23	1063	0.04%	871	0.10%	89407	0.09%	Australia
24	991	0.04%	661	0.08%	126729	0.13%	Non-Profit (org)
25	930	0.04%	860	0.10%	247676	0.25%	Netherlands
26	873	0.03%	845	0.10%	177584	0.18%	Canada
27	641	0.03%	606	0.07%	333888	0.33%	Latvia
28	314	0.01%	256	0.03%	11220	0.01%	Sweden
29	275	0.01%	216	0.03%	35830	0.04%	Mexico
30	271	0.01%	180	0.02%	34249	0.03%	Ukraine