

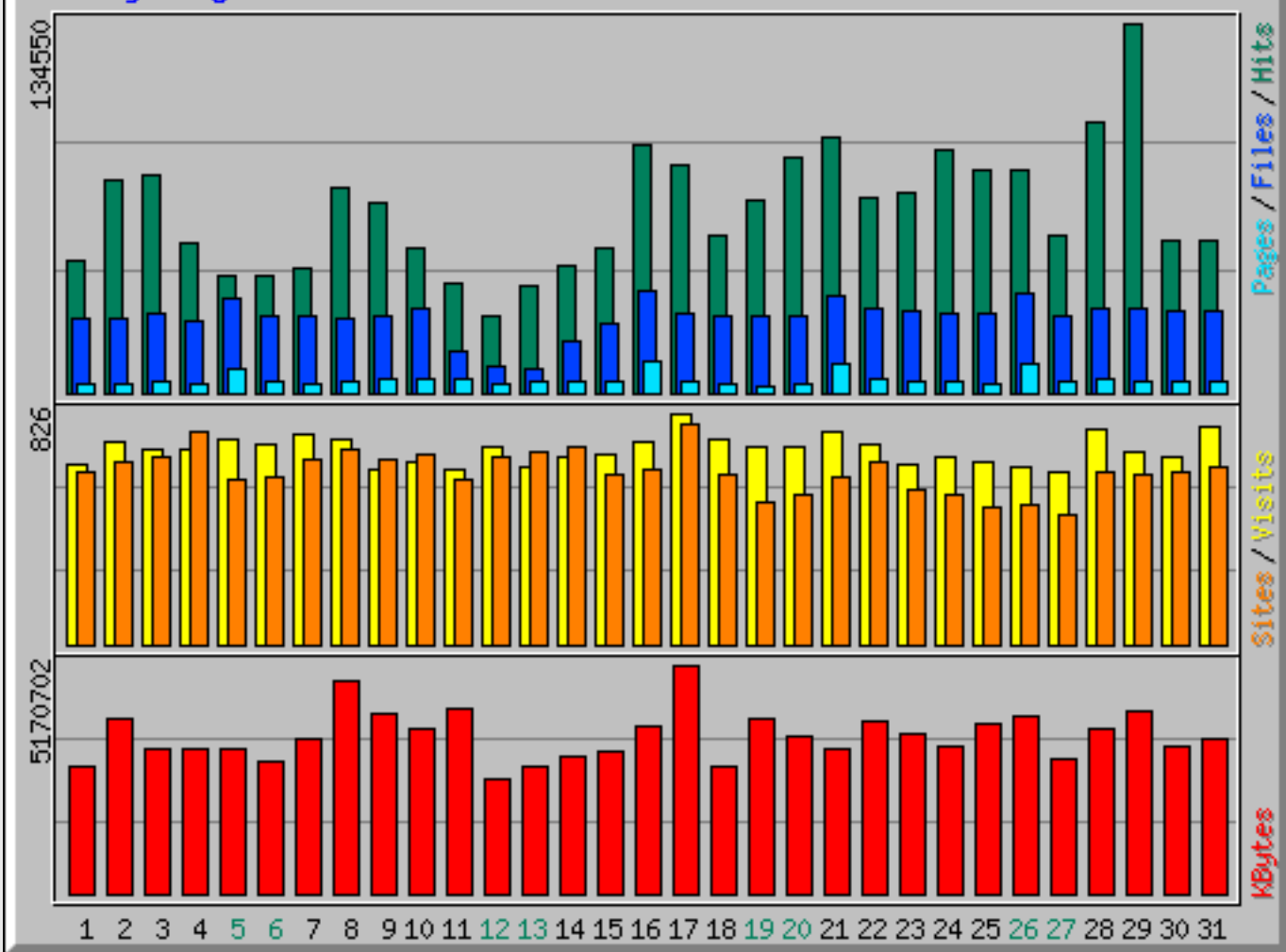
Usage Statistics for amrc.ssec.wisc.edu

Summary Period: March 2016
Generated 01-Apr-2016 01:01 UTC

[\[Daily Statistics\]](#) [\[Hourly Statistics\]](#) [\[URLs\]](#) [\[Entry\]](#) [\[Exit\]](#) [\[Sites\]](#) [\[Referrers\]](#) [\[Search\]](#) [\[Agents\]](#) [\[Countries\]](#)

Monthly Statistics for March 2016		
Total Hits	2065180	
Total Files	850596	
Total Pages	147084	
Total Visits	21400	
Total KBytes	110582241	
Total Unique Sites	10343	
Total Unique URLs	18295	
Total Unique Referrers	1304	
Total Unique User Agents	380	
	Avg	Max
Hits per Hour	2775	20775
Hits per Day	66618	134550
Files per Day	27438	36820
Pages per Day	4744	11214
Sites per Day	333	788
Visits per Day	690	826
KBytes per Day	3567169	5170702
Hits by Response Code		
Code 200 - OK	41.19%	850596
Code 206 - Partial Content	0.75%	15410
Code 301 - Moved Permanently	0.11%	2238
Code 302 - Found	0.02%	311
Code 304 - Not Modified	1.86%	38380
Code 400 - Bad Request	0.00%	91
Code 401 - Unauthorized	0.00%	14
Code 403 - Forbidden	0.02%	428
Code 404 - Not Found	56.05%	1157610
Code 405 - Method Not Allowed	0.00%	23
Code 416 - Requested Range Not Satisfiable	0.00%	1
Code 500 - Internal Server Error	0.00%	66
Code 501 - Not Implemented	0.00%	12

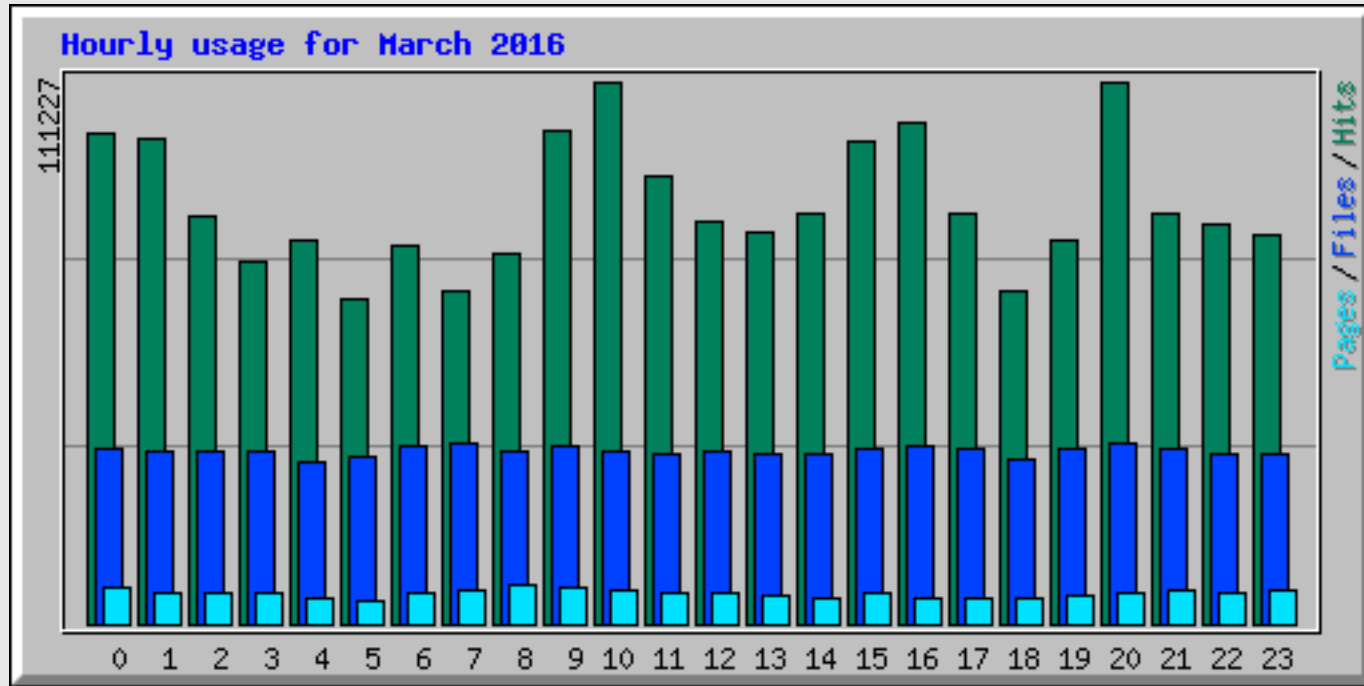
Daily usage for March 2016



Daily Statistics for March 2016

Day	Hits		Files		Pages		Visits		Sites		KBytes	
1	48379	2.34%	27323	3.21%	2799	1.90%	643	3.00%	611	5.91%	2896064	2.62%
2	77183	3.74%	26938	3.17%	3294	2.24%	722	3.37%	648	6.27%	3963492	3.58%
3	78897	3.82%	29013	3.41%	4033	2.74%	698	3.26%	671	6.49%	3254567	2.94%
4	54873	2.66%	26435	3.11%	3099	2.11%	695	3.25%	763	7.38%	3290574	2.98%
5	42840	2.07%	34283	4.03%	9145	6.22%	734	3.43%	585	5.66%	3274899	2.96%
6	42319	2.05%	27954	3.29%	3874	2.63%	713	3.33%	597	5.77%	2964621	2.68%
7	45399	2.20%	27693	3.26%	3011	2.05%	746	3.49%	656	6.34%	3510208	3.17%
8	74645	3.61%	27167	3.19%	4171	2.84%	728	3.40%	700	6.77%	4796193	4.34%
9	69004	3.34%	27698	3.26%	5487	3.73%	621	2.90%	657	6.35%	4072157	3.68%
10	52828	2.56%	30532	3.59%	4767	3.24%	649	3.03%	682	6.59%	3697948	3.34%
11	39608	1.92%	15012	1.76%	4732	3.22%	627	2.93%	586	5.67%	4183212	3.78%
12	27839	1.35%	9628	1.13%	3647	2.48%	708	3.31%	672	6.50%	2610586	2.36%
13	38915	1.88%	8534	1.00%	3702	2.52%	637	2.98%	689	6.66%	2890566	2.61%
14	45790	2.22%	19054	2.24%	4089	2.78%	673	3.14%	702	6.79%	3068853	2.78%
15	52415	2.54%	25335	2.98%	4085	2.78%	679	3.17%	605	5.85%	3216784	2.91%
16	89951	4.36%	36820	4.33%	11214	7.62%	722	3.37%	628	6.07%	3775756	3.41%
17	82944	4.02%	29274	3.44%	3997	2.72%	826	3.86%	788	7.62%	5170702	4.68%
18	57297	2.77%	28319	3.33%	3338	2.27%	734	3.43%	606	5.86%	2881864	2.61%
19	69582	3.37%	27938	3.28%	2703	1.84%	705	3.29%	508	4.91%	3948570	3.57%
20	85706	4.15%	28334	3.33%	2971	2.02%	702	3.28%	537	5.19%	3552916	3.21%
21	93026	4.50%	35031	4.12%	10531	7.16%	762	3.56%	601	5.81%	3253287	2.94%
22	70508	3.41%	30935	3.64%	5036	3.42%	711	3.32%	649	6.27%	3869174	3.50%

23	72635	3.52%	29407	3.46%	3972	2.70%	642	3.00%	550	5.32%	3603076	3.26%
24	88756	4.30%	29024	3.41%	4250	2.89%	665	3.11%	531	5.13%	3329773	3.01%
25	80977	3.92%	28533	3.35%	3569	2.43%	650	3.04%	486	4.70%	3809450	3.44%
26	81327	3.94%	36332	4.27%	10898	7.41%	635	2.97%	502	4.85%	3985452	3.60%
27	57200	2.77%	28135	3.31%	4016	2.73%	615	2.87%	459	4.44%	3038798	2.75%
28	98832	4.79%	30237	3.55%	4715	3.21%	766	3.58%	614	5.94%	3727244	3.37%
29	134550	6.52%	30339	3.57%	4130	2.81%	689	3.22%	604	5.84%	4133789	3.74%
30	55568	2.69%	29307	3.45%	3696	2.51%	670	3.13%	617	5.97%	3316823	3.00%
31	55387	2.68%	30032	3.53%	4113	2.80%	774	3.62%	634	6.13%	3494845	3.16%



Hourly Statistics for March 2016												
Hour	Hits			Files			Pages			KBytes		
	Avg	Total		Avg	Total		Avg	Total		Avg	Total	
0	3239	100411	4.86%	1163	36058	4.24%	247	7666	5.21%	122619	3801174	3.44%
1	3208	99460	4.82%	1134	35165	4.13%	198	6161	4.19%	132931	4120863	3.73%
2	2692	83459	4.04%	1142	35409	4.16%	204	6330	4.30%	139708	4330954	3.92%
3	2399	74374	3.60%	1132	35114	4.13%	205	6360	4.32%	96312	2985669	2.70%
4	2528	78383	3.80%	1072	33259	3.91%	161	4997	3.40%	99102	3072174	2.78%
5	2151	66706	3.23%	1110	34410	4.05%	156	4849	3.30%	132084	4094601	3.70%
6	2504	77636	3.76%	1171	36311	4.27%	203	6298	4.28%	134584	4172108	3.77%
7	2209	68483	3.32%	1191	36921	4.34%	218	6761	4.60%	143329	4443205	4.02%
8	2450	75969	3.68%	1139	35316	4.15%	251	7783	5.29%	133653	4143237	3.75%
9	3257	100994	4.89%	1176	36479	4.29%	230	7134	4.85%	113646	3523034	3.19%
10	3587	111227	5.39%	1148	35596	4.18%	212	6588	4.48%	120301	3729316	3.37%
11	2960	91776	4.44%	1129	35016	4.12%	200	6224	4.23%	139711	4331039	3.92%
12	2653	82255	3.98%	1140	35350	4.16%	198	6138	4.17%	112146	3476518	3.14%
13	2587	80210	3.88%	1118	34658	4.07%	186	5775	3.93%	123801	3837820	3.47%
14	2716	84198	4.08%	1126	34914	4.10%	164	5100	3.47%	158357	4909070	4.44%
15	3187	98820	4.79%	1162	36025	4.24%	195	6061	4.12%	262020	8122615	7.35%
16	3321	102959	4.99%	1170	36279	4.27%	164	5111	3.47%	241615	7490060	6.77%
17	2709	83998	4.07%	1150	35670	4.19%	166	5164	3.51%	200370	6211457	5.62%

18	2192	67954	3.29%	1094	33935	3.99%	163	5058	3.44%	162978	5052313	4.57%
19	2533	78534	3.80%	1151	35710	4.20%	187	5807	3.95%	169735	5261789	4.76%
20	3586	111172	5.38%	1194	37020	4.35%	199	6184	4.20%	212179	6577537	5.95%
21	2714	84146	4.07%	1161	36002	4.23%	218	6775	4.61%	159142	4933405	4.46%
22	2650	82178	3.98%	1127	34938	4.11%	196	6090	4.14%	139795	4333631	3.92%
23	2576	79878	3.87%	1130	35041	4.12%	215	6670	4.53%	117053	3628653	3.28%

Top 30 of 18295 Total URLs												
#	Hits		KBytes		URL							
1	64189	3.11%	840633	0.76%	/aws/							
2	16331	0.79%	134552	0.12%	/data/view-data.php							
3	15334	0.74%	101759	0.09%	/							
4	13434	0.65%	34838	0.03%	/data/surface/awstext/8921.txt							
5	13425	0.65%	98104	0.09%	/data/surface/awstext/8903.txt							
6	12695	0.61%	92887	0.08%	/data/surface/awstext/8985.txt							
7	12689	0.61%	89716	0.08%	/data/surface/awstext/21358.txt							
8	12684	0.61%	69927	0.06%	/data/surface/awstext/8984.txt							
9	12682	0.61%	85729	0.08%	/data/surface/awstext/8913.txt							
10	12682	0.61%	100068	0.09%	/data/surface/awstext/8927.txt							
11	12682	0.61%	85165	0.08%	/data/surface/awstext/8934.txt							
12	12681	0.61%	58390	0.05%	/data/surface/awstext/8912.txt							
13	12681	0.61%	97206	0.09%	/data/surface/awstext/8924.txt							
14	12681	0.61%	89624	0.08%	/data/surface/awstext/8947.txt							
15	12681	0.61%	2179	0.00%	/data/surface/awstext/8981.txt							
16	12681	0.61%	45858	0.04%	/data/surface/awstext/9116.txt							
17	12680	0.61%	96459	0.09%	/data/surface/awstext/30393.txt							
18	12680	0.61%	85399	0.08%	/data/surface/awstext/8904.txt							
19	12680	0.61%	63070	0.06%	/data/surface/awstext/8914.txt							
20	12680	0.61%	70772	0.06%	/data/surface/awstext/8916.txt							
21	12679	0.61%	89601	0.08%	/data/surface/awstext/8905.txt							
22	12679	0.61%	76163	0.07%	/data/surface/awstext/8911.txt							
23	12679	0.61%	56358	0.05%	/data/surface/awstext/8918.txt							
24	12679	0.61%	84091	0.08%	/data/surface/awstext/8988.txt							
25	12679	0.61%	76428	0.07%	/data/surface/awstext/8989.txt							
26	12678	0.61%	79476	0.07%	/data/surface/awstext/8900.txt							
27	12678	0.61%	86732	0.08%	/data/surface/awstext/8906.txt							
28	12677	0.61%	95350	0.09%	/data/surface/awstext/21357.txt							
29	12677	0.61%	96932	0.09%	/data/surface/awstext/21361.txt							
30	12677	0.61%	88214	0.08%	/data/surface/awstext/8928.txt							
View All URLs												

Top 10 of 18295 Total URLs By KBytes												
#	Hits		KBytes		URL							

1	13	0.00%	1990319	1.80%	/data/satellite/composite/ant.ir.anim.kmz
2	996	0.05%	1850309	1.67%	/meetings/meeting2015/presentations/AMOMF-Day1/AMOMFW2015_stationtalk.pdf
3	92	0.00%	1606906	1.45%	/aws/documents/fieldreports/aws_fldrpt1112.pdf
4	20	0.00%	1588683	1.44%	/aws/documents/fieldreports/aws_fldrpt1011.pdf
5	23	0.00%	1480628	1.34%	/aws/documents/fieldreports/aws_fldrpt0607.pdf
6	258	0.01%	1459148	1.32%	/aws/documents/fieldreports/aws_fldrpt0809.pdf
7	733	0.04%	1435326	1.30%	/aws/documents/fieldreports/aws_fldrpt0001.pdf
8	16	0.00%	1300198	1.18%	/usap/hallett/1957-1973.txt
9	19	0.00%	1280015	1.16%	/aws/documents/fieldreports/aws_fldrpt0506.pdf
10	10	0.00%	1172114	1.06%	/usap/byrd/1957-1972.txt

Top 10 of 359 Total Entry Pages					
#	Hits		Visits		URL
1	15334	0.74%	5257	30.02%	/
2	64189	3.11%	2894	16.53%	/aws/
3	16331	0.79%	2805	16.02%	/data/view-data.php
4	1182	0.06%	1124	6.42%	/blog/feed/
5	3583	0.17%	691	3.95%	/news/
6	1341	0.06%	651	3.72%	/data/
7	1250	0.06%	254	1.45%	/aws/station_list.php
8	396	0.02%	245	1.40%	/blog/
9	224	0.01%	174	0.99%	/blog/xmlrpc.php
10	145	0.01%	134	0.77%	/blog/wp-cron.php

Top 10 of 371 Total Exit Pages					
#	Hits		Visits		URL
1	15334	0.74%	4788	25.98%	/
2	16331	0.79%	3118	16.92%	/data/view-data.php
3	64189	3.11%	2994	16.25%	/aws/
4	1182	0.06%	1125	6.10%	/blog/feed/
5	3583	0.17%	768	4.17%	/news/
6	750	0.04%	737	4.00%	/data/surface/awstext/
7	1341	0.06%	455	2.47%	/data/
8	1250	0.06%	230	1.25%	/aws/station_list.php
9	396	0.02%	227	1.23%	/blog/
10	7560	0.37%	193	1.05%	/aws/map.php

Top 100 of 10343 Total Sites									
#	Hits		Files		KBytes		Visits		Hostname
1	531673	25.74%	519093	61.03%	3418080	3.09%	0	0.00%	bslscene.nerc-bas.ac.uk
2	101625	4.92%	0	0.00%	467932	0.42%	0	0.00%	thermocline.aos.wisc.edu
3	93702	4.54%	0	0.00%	431450	0.39%	0	0.00%	tropopause.aos.wisc.edu

4	58955	2.85%	58199	6.84%	348467	0.32%	744	3.48%	wahoo.mmm.ucar.edu
5	41999	2.03%	0	0.00%	155236	0.14%	0	0.00%	120.24.223.174
6	35344	1.71%	0	0.00%	162741	0.15%	0	0.00%	120.55.161.201
7	35053	1.70%	0	0.00%	123227	0.11%	0	0.00%	121.41.26.92
8	28406	1.38%	0	0.00%	130795	0.12%	0	0.00%	164.161.126.124.broad.bjtelecom.net
9	26222	1.27%	0	0.00%	120739	0.11%	0	0.00%	120.25.78.199
10	26011	1.26%	0	0.00%	119767	0.11%	0	0.00%	120.27.163.186
11	23632	1.14%	0	0.00%	108813	0.10%	0	0.00%	123.57.212.97
12	22609	1.09%	22548	2.65%	788902	0.71%	3	0.01%	static.227.58.9.176.clients.your-server.de
13	21392	1.04%	0	0.00%	98499	0.09%	0	0.00%	218.77.80.131
14	19492	0.94%	0	0.00%	89751	0.08%	0	0.00%	120.25.240.195
15	19337	0.94%	0	0.00%	89037	0.08%	0	0.00%	reserve.cableplus.com.cn
16	17580	0.85%	0	0.00%	80947	0.07%	0	0.00%	121.40.174.149
17	17431	0.84%	0	0.00%	80261	0.07%	0	0.00%	114.55.25.148
18	17394	0.84%	0	0.00%	80091	0.07%	0	0.00%	112.5.54.100
19	17394	0.84%	6	0.00%	80105	0.07%	2	0.01%	123.56.237.128
20	17378	0.84%	0	0.00%	42723	0.04%	0	0.00%	139.196.204.37
21	17273	0.84%	0	0.00%	79533	0.07%	0	0.00%	120.26.204.181
22	16966	0.82%	3	0.00%	41640	0.04%	1	0.00%	114.55.0.10
23	16488	0.80%	0	0.00%	75919	0.07%	0	0.00%	58.96.169.102
24	15189	0.74%	0	0.00%	69877	0.06%	0	0.00%	60.13.181.180
25	15113	0.73%	0	0.00%	69588	0.06%	0	0.00%	101.201.153.162
26	15075	0.73%	0	0.00%	69413	0.06%	0	0.00%	139.196.40.210
27	14564	0.71%	0	0.00%	67060	0.06%	0	0.00%	123.57.249.157
28	13743	0.67%	0	0.00%	63280	0.06%	0	0.00%	120.24.233.117
29	11904	0.58%	0	0.00%	0	0.00%	744	3.48%	birch.ssec.wisc.edu
30	11616	0.56%	0	0.00%	53486	0.05%	0	0.00%	180.175.204.109
31	10042	0.49%	1244	0.15%	424922	0.38%	10	0.05%	97-83-135-6.dhcp.eucl.wi.charter.com
32	8844	0.43%	3	0.00%	40729	0.04%	1	0.00%	121.41.75.18
33	8842	0.43%	0	0.00%	40713	0.04%	0	0.00%	114.215.119.102
34	8841	0.43%	0	0.00%	40708	0.04%	0	0.00%	121.40.181.209
35	8838	0.43%	0	0.00%	40695	0.04%	0	0.00%	113.109.26.81
36	8838	0.43%	0	0.00%	40695	0.04%	0	0.00%	123.56.193.162
37	8838	0.43%	0	0.00%	40695	0.04%	0	0.00%	123.56.72.4
38	8837	0.43%	0	0.00%	40690	0.04%	0	0.00%	123.56.204.106
39	8836	0.43%	0	0.00%	40685	0.04%	0	0.00%	123.56.129.74
40	8833	0.43%	0	0.00%	40671	0.04%	0	0.00%	120.27.106.70
41	8830	0.43%	0	0.00%	40658	0.04%	0	0.00%	120.24.187.25
42	8827	0.43%	0	0.00%	40644	0.04%	0	0.00%	139.196.148.57
43	8802	0.43%	0	0.00%	40529	0.04%	0	0.00%	120.25.164.224
44	8757	0.42%	0	0.00%	40322	0.04%	0	0.00%	120.55.165.0
45	8750	0.42%	0	0.00%	40289	0.04%	0	0.00%	49-213-10-79.static.hdcdatacentre.com
46	8736	0.42%	0	0.00%	40225	0.04%	0	0.00%	120.26.243.122
47	8719	0.42%	0	0.00%	40147	0.04%	0	0.00%	116.216.30.3
48	8717	0.42%	0	0.00%	40137	0.04%	0	0.00%	112.124.27.173
49	8674	0.42%	0	0.00%	39896	0.04%	0	0.00%	123.126.109.207

95	3863	0.19%	2084	0.25%	1063830	0.96%	50	0.23%	permafrost.ssec.wisc.edu
96	3748	0.18%	0	0.00%	17258	0.02%	0	0.00%	113.108.189.54
97	3606	0.17%	2915	0.34%	1274777	1.15%	66	0.31%	snares.ssec.wisc.edu
98	3559	0.17%	0	0.00%	16387	0.01%	0	0.00%	123.57.240.1
99	3509	0.17%	0	0.00%	16157	0.01%	0	0.00%	219.141.76.24
100	3455	0.17%	3328	0.39%	2078031	1.88%	17	0.08%	b115419.yse.yahoo.net
View All Sites									

Top 10 of 10343 Total Sites By KBytes									
#	Hits		Files		KBytes		Visits		Hostname
1	4638	0.22%	4224	0.50%	4672304	4.23%	210	0.98%	spider-199-21-99-212.yandex.com
2	531673	25.74%	519093	61.03%	3418080	3.09%	0	0.00%	bslcene.nerc-bas.ac.uk
3	4917	0.24%	4311	0.51%	2927481	2.65%	19	0.09%	b115325.yse.yahoo.net
4	3455	0.17%	3328	0.39%	2078031	1.88%	17	0.08%	b115419.yse.yahoo.net
5	3968	0.19%	3968	0.47%	1731313	1.57%	0	0.00%	rajja.pair.com
6	2861	0.14%	2767	0.33%	1692308	1.53%	32	0.15%	b110355.yse.yahoo.net
7	487	0.02%	474	0.06%	1341922	1.21%	4	0.02%	ec2-54-201-139-221.us-west-2.compute.amazonaws.com
8	3606	0.17%	2915	0.34%	1274777	1.15%	66	0.31%	snares.ssec.wisc.edu
9	3863	0.19%	2084	0.25%	1063830	0.96%	50	0.23%	permafrost.ssec.wisc.edu
10	585	0.03%	388	0.05%	1062449	0.96%	6	0.03%	katabatic.ssec.wisc.edu

Top 30 of 1304 Total Referrers			
#	Hits		Referrer
1	1728740	83.71%	- (Direct Request)
2	195327	9.46%	http://sysadm.aos.wisc.edu/~poker/owl-1443/loop.html
3	26240	1.27%	http://arctic.ssec.wisc.edu/data/view-data.php
4	23233	1.12%	http://amrc.ssec.wisc.edu/data/view-data.php
5	8232	0.40%	http://amrc.ssec.wisc.edu/data/
6	5877	0.28%	http://amrc.ssec.wisc.edu/aws/index.php
7	5208	0.25%	nt
8	3720	0.18%	http://amrc.ssec.wisc.edu/blog/
9	2592	0.13%	http://amrc.ssec.wisc.edu/
10	2559	0.12%	https://amrc.ssec.wisc.edu/data/view-data.php
11	1970	0.10%	http://amrc.ssec.wisc.edu/meetings/meeting2015/program.shtml
12	1392	0.07%	http://www.eltiempodelosaficionados.com/SITUACIONACTUAL.html
13	1387	0.07%	https://amrc.ssec.wisc.edu/
14	1369	0.07%	https://amrc.ssec.wisc.edu/db_admin/index.php
15	1197	0.06%	https://www.google.com/
16	1157	0.06%	http://www.eldoradocountyweather.com/satellite/ssec/antarctica-composite-ir.html
17	895	0.04%	http://amrc.ssec.wisc.edu
18	891	0.04%	http://amrc.ssec.wisc.edu/aws/station_list.php
19	876	0.04%	http://arctic.ssec.wisc.edu/data/noaa/IR-loop-L/
20	866	0.04%	http://amrc.ssec.wisc.edu/data/satellite/composite/IRHOURLY-1024/

21	853	0.04%	https://www.google.com
22	815	0.04%	http://amrc.ssec.wisc.edu/style.css
23	779	0.04%	https://amrc.ssec.wisc.edu/repository
24	772	0.04%	http://wattsupwiththat.com/2009/02/04/snow-job-in-antarctica-digging-out-the-data-source/
25	753	0.04%	http://amrc.ssec.wisc.edu/aws/documents/fieldreports/index.html
26	719	0.03%	https://amrc.ssec.wisc.edu/data/
27	677	0.03%	http://www.astroflesz.pl/aktualnosci/newsy/306-jak-dlugo-trwa-lot-na-ksiezyc
28	647	0.03%	http://www.adventure-antarctica.de/
29	607	0.03%	http://ice.ssec.wisc.edu/data/view-data.php
30	590	0.03%	http://uwamrc.ssec.wisc.edu/search.html

[View All Referrers](#)

Top 6 of 6 Total Search Strings

#	Hits		Search String
1	234	97.91%	how to
2	1	0.42%	antarctic meteorological research
3	1	0.42%	components of metereological station
4	1	0.42%	matthew lazzara wisconsin
5	1	0.42%	mgs home page
6	1	0.42%	start of part

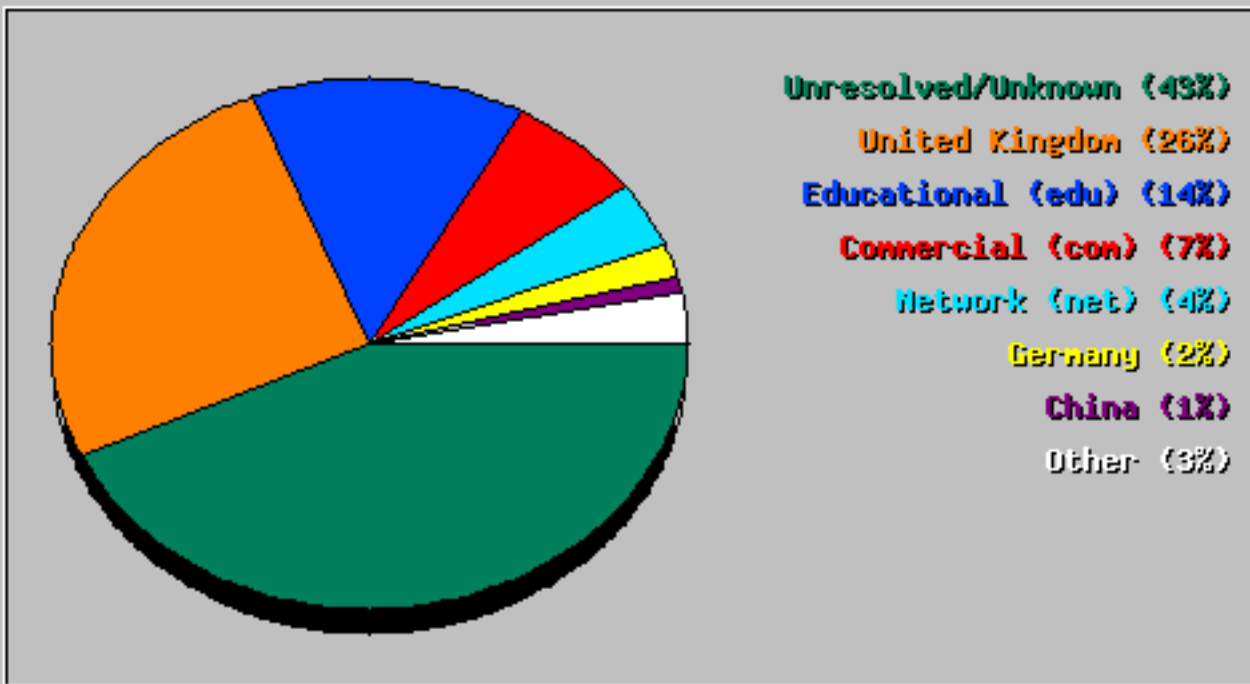
Top 50 of 380 Total User Agents

#	Hits		User Agent
1	913891	44.25%	MSIE 6
2	531673	25.74%	Wget/1.11.4 Red Hat modified
3	326473	15.81%	Mozilla/5
4	58780	2.85%	Python-urllib/2.6
5	51627	2.50%	Baiduspider/2
6	29911	1.45%	MegaIndex
7	19789	0.96%	Yahoo! Slurp
8	16271	0.79%	bingbot/2
9	15503	0.75%	TurnitinBot (https://turnitin.com/robot/crawlerinfo.html)
10	11904	0.58%	Wget/1.14 (linux-gnu)
11	8305	0.40%	Googlebot/2
12	8148	0.39%	check_http/v2.1.1 (monitoring-plugins 2.1.1)
13	5280	0.26%	Java/1.8.0_45
14	5208	0.25%	curl/7.19.7 (x86_64-redhat-linux-gnu) libcurl/7.19.7 NSS/3.16.2.3 Basic ECC zlib/1.2.8 libidn/1.18 libssh2/1.4.2
15	3531	0.17%	Wget/1.12 (freebsd8.1)
16	3370	0.16%	YandexBot/3
17	2372	0.11%	MSIE 8
18	1666	0.08%	Googlebot-Image/1.0
19	1596	0.08%	YandexImages/3
20	1515	0.07%	Linux x86_64

21	1277	0.06%	Googlebot/2.1 (+http://www.google.com/bot.html)
22	1274	0.06%	MSIE 9
23	1193	0.06%	Wget/1.16.3 (linux-gnu)
24	1038	0.05%	WSearchBot/1
25	734	0.04%	Safari/10600.1.25.1 CFNetwork/720.1.1 Darwin/14.0.0 (x86_64)
26	575	0.03%	vebidoobot
27	551	0.03%	Wotbox/2.01 (+http://www.wotbox.com/bot/)
28	541	0.03%	istellabot-nutch/Nutch-1.10
29	513	0.02%	facebookexternalhit/1.1 (+http://www.facebook.com/externalhit_uatext.php)
30	479	0.02%	SemanticScholarBot/1.0 (+http://s2.allenai.org/bot.html)
31	448	0.02%	Apache/2.2.15 (CentOS) (internal dummy connection)
32	437	0.02%	Wget/1.17.1 (freebsd8.2)
33	428	0.02%	Sogou web spider/4.0(+http://www.sogou.com/docs/help/webmasters.htm#07)
34	406	0.02%	SputnikImageBot/2
35	401	0.02%	MSIE 10
36	344	0.02%	archive
37	336	0.02%	SputnikBot/2
38	316	0.02%	UniversalFeedParser/5.1.5b +https://code.google.com/p/feedparser/
39	312	0.02%	Mozilla"
40	308	0.01%	Mozilla/4.0 (compatible;)
41	263	0.01%	AhrefsBot/5
42	246	0.01%	Feedly/1.0 (+http://www.feedly.com/fetcher.html; like FeedFetcher-Google)
43	245	0.01%	istellabot/Nutch-1.10
44	231	0.01%	Exabot/3
45	222	0.01%	Ultraseek
46	210	0.01%	MSIE 7
47	205	0.01%	Googlebot-M
48	200	0.01%	curl/7.19.7 (x86_64-redhat-linux-gnu) libcurl/7.19.7 NSS/3.19.1 Basic ECC zlib/1.2.3 libidn/1.18 libssh2/1.4.2
49	191	0.01%	Opera 9
50	185	0.01%	Java/1.7.0_95

[View All User Agents](#)

Usage by Country for March 2016



Top 30 of 104 Total Countries

#	Hits		Files		KBytes		Country
1	896955	43.43%	32080	3.77%	12778280	11.56%	Unresolved/Unknown
2	533838	25.85%	521176	61.27%	3951095	3.57%	United Kingdom
3	294526	14.26%	79218	9.31%	7477500	6.76%	Educational (edu)
4	144780	7.01%	114269	13.43%	59107113	53.45%	Commercial (com)
5	77603	3.76%	44361	5.22%	14353457	12.98%	Network (net)
6	41437	2.01%	40786	4.79%	2659292	2.40%	Germany
7	28377	1.37%	299	0.04%	146074	0.13%	China
8	9656	0.47%	4582	0.54%	1326056	1.20%	Japan
9	5209	0.25%	5209	0.61%	1959	0.00%	Generic TLD (info)
10	3997	0.19%	1005	0.12%	231215	0.21%	New Zealand
11	3125	0.15%	2956	0.35%	628457	0.57%	Italy
12	3065	0.15%	2275	0.27%	3836779	3.47%	Russian Federation
13	2270	0.11%	1535	0.18%	166266	0.15%	Argentina
14	1904	0.09%	1358	0.16%	73337	0.07%	Brazil
15	1595	0.08%	707	0.08%	355777	0.32%	Poland
16	1414	0.07%	1371	0.16%	600814	0.54%	France
17	1247	0.06%	1177	0.14%	215432	0.19%	Netherlands
18	1233	0.06%	305	0.04%	32978	0.03%	United States
19	1150	0.06%	1060	0.12%	256666	0.23%	Australia
20	1147	0.06%	1027	0.12%	72210	0.07%	Austria
21	1010	0.05%	919	0.11%	59564	0.05%	Norway
22	969	0.05%	949	0.11%	122025	0.11%	Hungary
23	968	0.05%	821	0.10%	63232	0.06%	Non-Profit (org)
24	892	0.04%	782	0.09%	182986	0.17%	US Government (gov)
25	761	0.04%	614	0.07%	55812	0.05%	European Union
26	549	0.03%	463	0.05%	285147	0.26%	US Military (mil)
27	372	0.02%	285	0.03%	574141	0.52%	British Indian Ocean Territory

28	365	0.02%	352	0.04%	156225	0.14%	Spain
29	339	0.02%	330	0.04%	18326	0.02%	Chile
30	333	0.02%	320	0.04%	89745	0.08%	Canada