

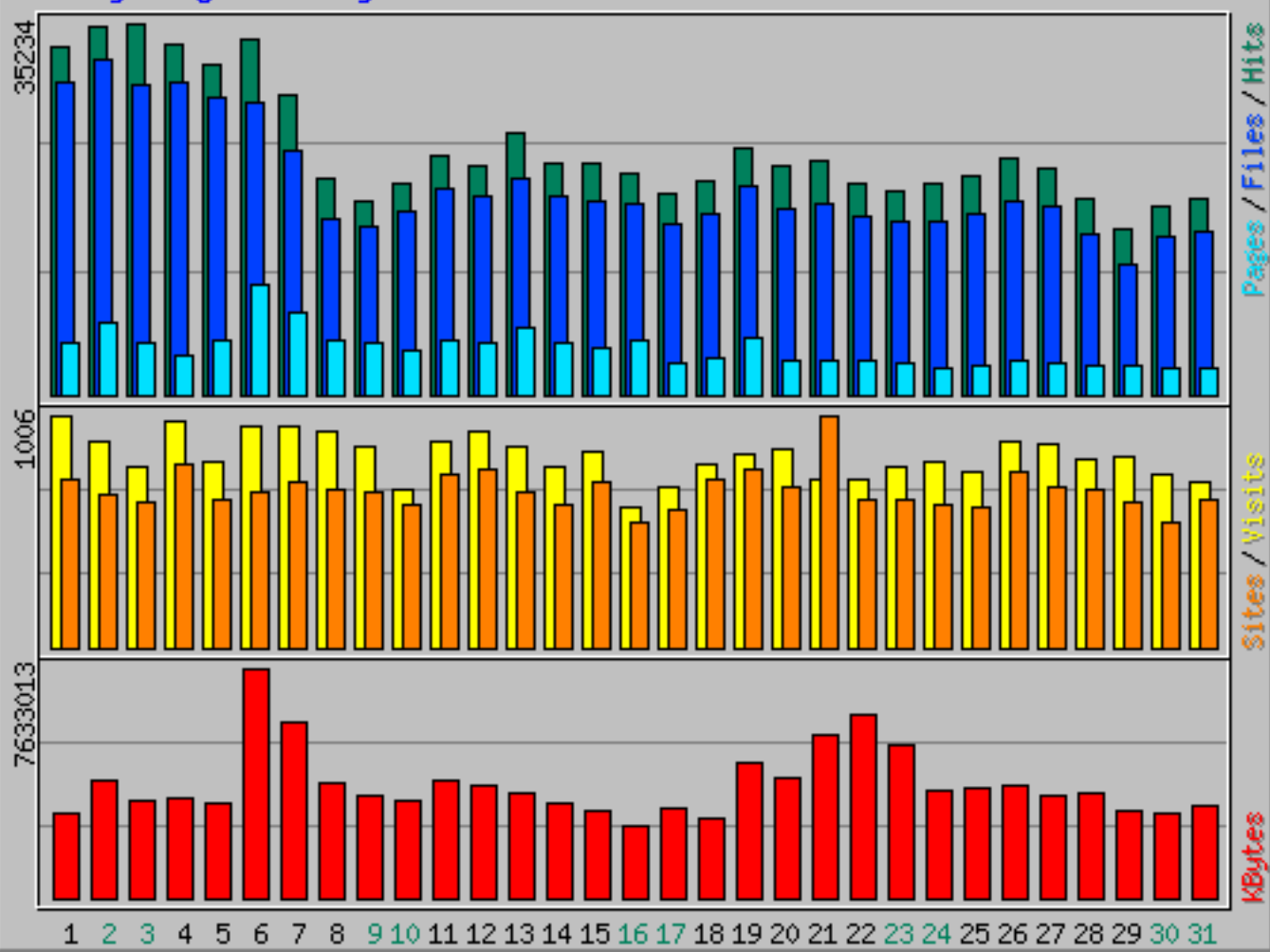
Usage Statistics for amrc.ssec.wisc.edu

Summary Period: May 2015
Generated 01-Jun-2015 01:00 UTC

[\[Daily Statistics\]](#) [\[Hourly Statistics\]](#) [\[URLs\]](#) [\[Entry\]](#) [\[Exit\]](#) [\[Sites\]](#) [\[Referrers\]](#) [\[Search\]](#) [\[Agents\]](#) [\[Countries\]](#)

Monthly Statistics for May 2015		
Total Hits	723142	
Total Files	613394	
Total Pages	136120	
Total Visits	25503	
Total KBytes	117075378	
Total Unique Sites	10387	
Total Unique URLs	5167	
Total Unique Referrers	1412	
Total Unique User Agents	507	
	Avg	Max
Hits per Hour	971	3093
Hits per Day	23327	35234
Files per Day	19786	31771
Pages per Day	4390	10482
Sites per Day	335	1003
Visits per Day	822	1006
KBytes per Day	3776625	7633013
Hits by Response Code		
Code 200 - OK	84.82%	613394
Code 206 - Partial Content	1.40%	10118
Code 301 - Moved Permanently	0.50%	3645
Code 302 - Found	0.04%	274
Code 304 - Not Modified	5.21%	37706
Code 400 - Bad Request	0.02%	113
Code 401 - Unauthorized	0.01%	73
Code 403 - Forbidden	0.04%	308
Code 404 - Not Found	7.94%	57406
Code 405 - Method Not Allowed	0.01%	64
Code 412 - Precondition Failed	0.00%	2
Code 416 - Requested Range Not Satisfiable	0.00%	3
Code 500 - Internal Server Error	0.00%	24
Code 501 - Not Implemented	0.00%	12

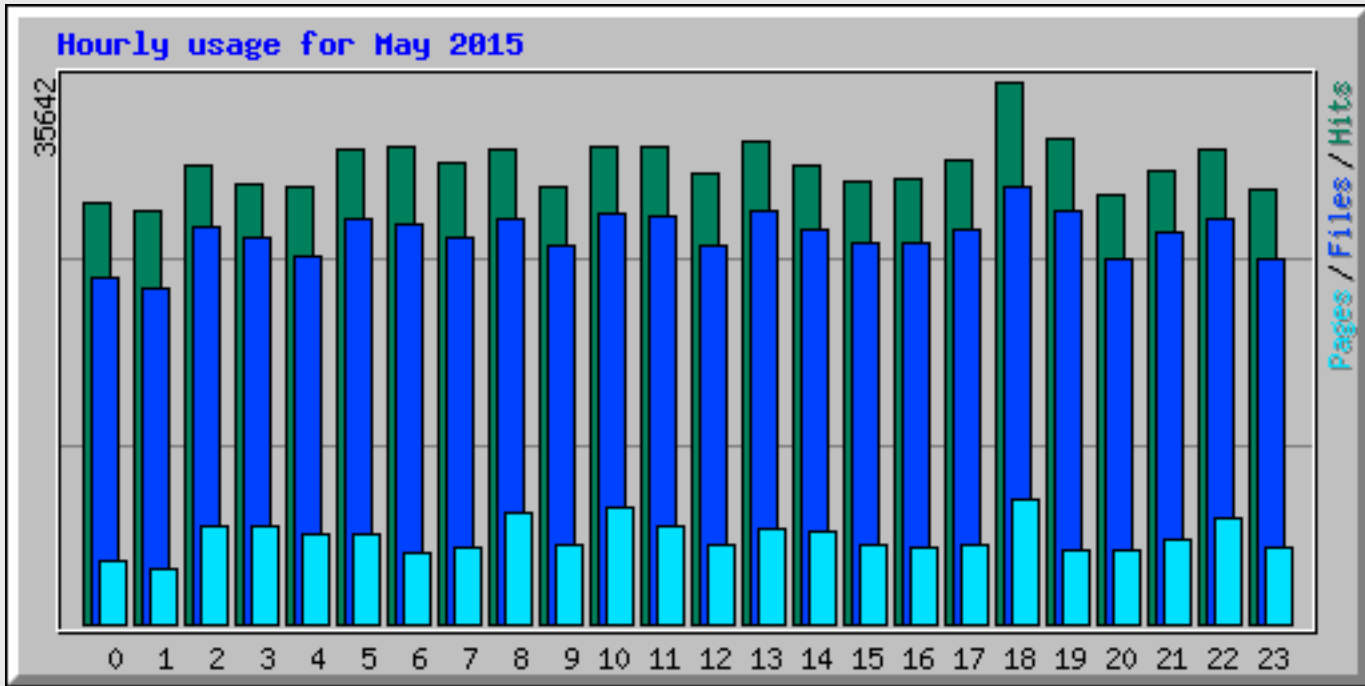
Daily usage for May 2015



Daily Statistics for May 2015

Day	Hits		Files		Pages		Visits		Sites		KBytes	
1	32863	4.54%	29674	4.84%	4869	3.58%	1006	3.94%	732	7.05%	2786395	2.38%
2	34980	4.84%	31771	5.18%	6858	5.04%	889	3.49%	663	6.38%	3898213	3.33%
3	35234	4.87%	29424	4.80%	4871	3.58%	783	3.07%	624	6.01%	3191030	2.73%
4	33134	4.58%	29602	4.83%	3664	2.69%	981	3.85%	797	7.67%	3313325	2.83%
5	31160	4.31%	28139	4.59%	5260	3.86%	809	3.17%	642	6.18%	3128359	2.67%
6	33621	4.65%	27693	4.51%	10482	7.70%	952	3.73%	676	6.51%	7633013	6.52%
7	28392	3.93%	23178	3.78%	7698	5.66%	961	3.77%	721	6.94%	5848131	5.00%
8	20501	2.83%	16767	2.73%	5121	3.76%	939	3.68%	686	6.60%	3843291	3.28%
9	18422	2.55%	15850	2.58%	4913	3.61%	874	3.43%	674	6.49%	3372710	2.88%
10	19966	2.76%	17463	2.85%	4300	3.16%	684	2.68%	616	5.93%	3234819	2.76%
11	22677	3.14%	19416	3.17%	5271	3.87%	886	3.47%	746	7.18%	3910072	3.34%
12	21700	3.00%	18769	3.06%	4936	3.63%	931	3.65%	772	7.43%	3769589	3.22%
13	24911	3.44%	20543	3.35%	6327	4.65%	867	3.40%	670	6.45%	3459701	2.96%
14	21864	3.02%	18933	3.09%	5028	3.69%	786	3.08%	620	5.97%	3142875	2.68%
15	22028	3.05%	18407	3.00%	4532	3.33%	846	3.32%	714	6.87%	2897190	2.47%
16	20895	2.89%	18065	2.95%	5177	3.80%	604	2.37%	544	5.24%	2357905	2.01%
17	19085	2.64%	16175	2.64%	2884	2.12%	689	2.70%	598	5.76%	3000037	2.56%
18	20239	2.80%	17148	2.80%	3536	2.60%	790	3.10%	726	6.99%	2619105	2.24%
19	23302	3.22%	19870	3.24%	5463	4.01%	835	3.27%	775	7.46%	4469382	3.82%
20	21665	3.00%	17513	2.86%	3251	2.39%	863	3.38%	690	6.64%	3994201	3.41%
21	22078	3.05%	18091	2.95%	3340	2.45%	730	2.86%	1003	9.66%	5443906	4.65%
22	20008	2.77%	16899	2.75%	3229	2.37%	723	2.83%	640	6.16%	6088055	5.20%

23	19378	2.68%	16500	2.69%	3069	2.25%	781	3.06%	640	6.16%	5108719	4.36%
24	19956	2.76%	16299	2.66%	2575	1.89%	803	3.15%	620	5.97%	3551740	3.03%
25	20650	2.86%	17022	2.78%	2722	2.00%	755	2.96%	608	5.85%	3627999	3.10%
26	22328	3.09%	18439	3.01%	3258	2.39%	890	3.49%	758	7.30%	3764916	3.22%
27	21341	2.95%	17848	2.91%	3010	2.21%	882	3.46%	695	6.69%	3364938	2.87%
28	18639	2.58%	15143	2.47%	2802	2.06%	817	3.20%	687	6.61%	3490522	2.98%
29	15662	2.17%	12459	2.03%	2785	2.05%	827	3.24%	630	6.07%	2852725	2.44%
30	17797	2.46%	14930	2.43%	2477	1.82%	754	2.96%	546	5.26%	2835344	2.42%
31	18666	2.58%	15364	2.50%	2412	1.77%	717	2.81%	635	6.11%	3077171	2.63%



Hourly Statistics for May 2015												
Hour	Hits			Files		Pages			KBytes			
	Avg	Total		Avg	Total	Avg	Total		Avg	Total		
0	894	27737	3.84%	733	22731	3.71%	133	4127	3.03%	135079	4187457	3.58%
1	873	27082	3.75%	712	22076	3.60%	115	3582	2.63%	112292	3481058	2.97%
2	972	30147	4.17%	839	26025	4.24%	207	6439	4.73%	129066	4001052	3.42%
3	934	28960	4.00%	819	25393	4.14%	205	6382	4.69%	126252	3913810	3.34%
4	926	28718	3.97%	778	24129	3.93%	189	5883	4.32%	144606	4482795	3.83%
5	1002	31079	4.30%	857	26572	4.33%	187	5806	4.27%	171562	5318416	4.54%
6	1011	31368	4.34%	845	26214	4.27%	151	4696	3.45%	199416	6181911	5.28%
7	979	30349	4.20%	818	25375	4.14%	159	4934	3.62%	176171	5461301	4.66%
8	1003	31122	4.30%	859	26656	4.35%	237	7372	5.42%	146198	4532132	3.87%
9	924	28669	3.96%	799	24774	4.04%	166	5166	3.80%	133719	4145283	3.54%
10	1008	31273	4.32%	868	26918	4.39%	244	7587	5.57%	134229	4161097	3.55%
11	1009	31306	4.33%	861	26720	4.36%	203	6323	4.65%	127481	3951909	3.38%
12	956	29651	4.10%	801	24835	4.05%	168	5211	3.83%	135603	4203686	3.59%
13	1023	31728	4.39%	877	27208	4.44%	202	6291	4.62%	170904	5298036	4.53%
14	970	30099	4.16%	834	25861	4.22%	193	5993	4.40%	171362	5312220	4.54%
15	936	29024	4.01%	809	25082	4.09%	165	5121	3.76%	139561	4326380	3.70%
16	944	29294	4.05%	805	24963	4.07%	159	4945	3.63%	154922	4802574	4.10%
17	983	30503	4.22%	836	25923	4.23%	164	5092	3.74%	180516	5596007	4.78%

18	1149	35642	4.93%	926	28728	4.68%	265	8240	6.05%	185160	5739961	4.90%
19	1028	31897	4.41%	874	27107	4.42%	156	4859	3.57%	193204	5989330	5.12%
20	907	28126	3.89%	772	23945	3.90%	153	4748	3.49%	157396	4879267	4.17%
21	957	29682	4.10%	827	25647	4.18%	177	5493	4.04%	164161	5088996	4.35%
22	1004	31131	4.30%	857	26592	4.34%	223	6913	5.08%	198363	6149250	5.25%
23	921	28555	3.95%	771	23920	3.90%	158	4917	3.61%	189402	5871451	5.02%

Top 30 of 5167 Total URLs												
#	Hits		KBytes		URL							
1	43110	5.96%	499646	0.43%	/aws/							
2	29204	4.04%	251845	0.22%	/data/view-data.php							
3	7449	1.03%	43321	0.04%	/							
4	6722	0.93%	16457	0.01%	/data/surface/awstext/8921.txt							
5	6680	0.92%	42002	0.04%	/data/surface/awstext/8903.txt							
6	6216	0.86%	1768	0.00%	/data/surface/awstext/8932.txt							
7	6195	0.86%	1065	0.00%	/data/surface/awstext/8900.txt							
8	5941	0.82%	31071	0.03%	/data/surface/awstext/8904.txt							
9	5940	0.82%	18431	0.02%	/data/surface/awstext/8916.txt							
10	5939	0.82%	16681	0.01%	/data/surface/awstext/8989.txt							
11	5931	0.82%	35750	0.03%	/data/surface/awstext/8911.txt							
12	5931	0.82%	41543	0.04%	/data/surface/awstext/8985.txt							
13	5930	0.82%	42114	0.04%	/data/surface/awstext/21361.txt							
14	5930	0.82%	33841	0.03%	/data/surface/awstext/8905.txt							
15	5930	0.82%	33920	0.03%	/data/surface/awstext/8947.txt							
16	5929	0.82%	42644	0.04%	/data/surface/awstext/21357.txt							
17	5928	0.82%	22985	0.02%	/data/surface/awstext/8918.txt							
18	5927	0.82%	40814	0.03%	/data/surface/awstext/8927.txt							
19	5927	0.82%	18246	0.02%	/data/surface/awstext/9116.txt							
20	5926	0.82%	41615	0.04%	/data/surface/awstext/21358.txt							
21	5926	0.82%	25562	0.02%	/data/surface/awstext/8984.txt							
22	5924	0.82%	38493	0.03%	/data/surface/awstext/8906.txt							
23	5923	0.82%	57290	0.05%	/data/surface/awstext/Linda.txt							
24	5922	0.82%	36997	0.03%	/data/surface/awstext/8934.txt							
25	5921	0.82%	35342	0.03%	/data/surface/awstext/8928.txt							
26	5921	0.82%	64391	0.05%	/data/surface/awstext/MinnaBluff.txt							
27	5921	0.82%	66068	0.06%	/data/surface/awstext/PegasusNorth.txt							
28	5920	0.82%	23686	0.02%	/data/surface/awstext/8914.txt							
29	5919	0.82%	41691	0.04%	/data/surface/awstext/8924.txt							
30	5919	0.82%	1017	0.00%	/data/surface/awstext/8981.txt							
View All URLs												

Top 10 of 5167 Total URLs By KBytes												
#	Hits		KBytes		URL							

1	26	0.00%	4321099	3.69%	/data/satellite/composite/ant.ir.anim.kmz
2	522	0.07%	2722855	2.33%	/aws/documents/fieldreports/aws_fldrpt0001.pdf
3	58	0.01%	2596880	2.22%	/aws/documents/fieldreports/aws_fldrpt0809.pdf
4	234	0.03%	1969364	1.68%	/aws/documents/fieldreports/fieldreport2012.pdf
5	31	0.00%	1931254	1.65%	/aws/documents/fieldreports/aws_fldrpt0607.pdf
6	12	0.00%	1811095	1.55%	/meetings/MGS/TOM-MGS-presentation.ppt
7	13	0.00%	1509013	1.29%	/meetings/meeting_05/talks/archer.ppt
8	21	0.00%	1508357	1.29%	/aws/documents/fieldreports/aws_fldrpt1011.pdf
9	25	0.00%	1145277	0.98%	/aws/documents/fieldreports/aws_fldrpt0506.pdf
10	11	0.00%	1041879	0.89%	/usap/byrd/1957-1972.txt

Top 10 of 406 Total Entry Pages					
#	Hits		Visits		URL
1	7449	1.03%	5279	25.23%	/
2	29204	4.04%	4044	19.33%	/data/view-data.php
3	43110	5.96%	3472	16.60%	/aws/
4	1181	0.16%	1104	5.28%	/blog/feed/
5	4324	0.60%	784	3.75%	/news/
6	800	0.11%	768	3.67%	/blog/comments/feed/
7	1349	0.19%	624	2.98%	/data/
8	288	0.04%	261	1.25%	/blog/wp-cron.php
9	412	0.06%	244	1.17%	/blog/
10	2353	0.33%	216	1.03%	/aws/station_list.php

Top 10 of 413 Total Exit Pages					
#	Hits		Visits		URL
1	7449	1.03%	4749	21.65%	/
2	29204	4.04%	4428	20.18%	/data/view-data.php
3	43110	5.96%	3507	15.99%	/aws/
4	1181	0.16%	1118	5.10%	/blog/feed/
5	4324	0.60%	817	3.72%	/news/
6	800	0.11%	769	3.51%	/blog/comments/feed/
7	1415	0.20%	743	3.39%	/data/surface/awstext/
8	1349	0.19%	450	2.05%	/data/
9	355	0.05%	315	1.44%	/cmt/cmt.html
10	288	0.04%	261	1.19%	/blog/wp-cron.php

Top 100 of 10387 Total Sites									
#	Hits		Files		KBytes		Visits		Hostname
1	278344	38.49%	272048	44.35%	1535575	1.31%	1	0.00%	bslscene.nerc-bas.ac.uk
2	58828	8.14%	58081	9.47%	282938	0.24%	744	2.92%	wahoo.mmm.ucar.edu
3	20296	2.81%	18416	3.00%	6201224	5.30%	0	0.00%	lobbyowl.ssec.wisc.edu

4	20020	2.77%	17256	2.81%	5817816	4.97%	0	0.00%	nebraska.ssec.wisc.edu
5	19351	2.68%	19120	3.12%	1750340	1.50%	10	0.04%	static.88-198-180-41.clients.your-server.de
6	17625	2.44%	17525	2.86%	5906634	5.05%	0	0.00%	tropopause.aos.wisc.edu
7	13805	1.91%	12725	2.07%	4274169	3.65%	0	0.00%	caveowl.ssec.wisc.edu
8	12807	1.77%	12439	2.03%	771113	0.66%	77	0.30%	b110158.yse.yahoo.net
9	11904	1.65%	0	0.00%	0	0.00%	744	2.92%	birch.ssec.wisc.edu
10	11006	1.52%	10994	1.79%	1156682	0.99%	6	0.02%	static.11.156.9.5.clients.your-server.de
11	9024	1.25%	8224	1.34%	4145012	3.54%	149	0.58%	b110088.yse.yahoo.net
12	6355	0.88%	642	0.10%	324584	0.28%	2	0.01%	121-99-193-72.bng1.nct.orcon.net.nz
13	5756	0.80%	1740	0.28%	387238	0.33%	11	0.04%	pc126.seg32.nipr.ac.jp
14	5201	0.72%	5201	0.85%	1776	0.00%	0	0.00%	meteoexploration.info
15	4918	0.68%	704	0.11%	214448	0.18%	137	0.54%	203.250.180.14
16	3971	0.55%	3968	0.65%	2617039	2.24%	0	0.00%	rajja.pair.com
17	3414	0.47%	696	0.11%	60506	0.05%	18	0.07%	203.250.179.193
18	3120	0.43%	499	0.08%	81338	0.07%	182	0.71%	14.139.119.1
19	2974	0.41%	0	0.00%	13694	0.01%	528	2.07%	metnet.met.co.nz
20	2953	0.41%	0	0.00%	13597	0.01%	0	0.00%	springtime.dreamhost.com
21	2215	0.31%	1814	0.30%	1760003	1.50%	352	1.38%	spider-100-43-85-25.yandex.com
22	2166	0.30%	2068	0.34%	11878	0.01%	312	1.22%	1.215.226.190
23	1924	0.27%	0	0.00%	8859	0.01%	0	0.00%	162-202-58-109.lightspeed.sndgca.sbcglobal.net
24	1664	0.23%	1664	0.27%	661578	0.57%	0	0.00%	pool-96-237-25-28.bstnma.east.verizon.net
25	1639	0.23%	757	0.12%	2186282	1.87%	186	0.73%	165.189.60.11
26	1632	0.23%	1552	0.25%	882032	0.75%	21	0.08%	84.237.179.110
27	1585	0.22%	0	0.00%	7298	0.01%	0	0.00%	151.190.254.108
28	1398	0.19%	1320	0.22%	229906	0.20%	30	0.12%	snares.ssec.wisc.edu
29	1354	0.19%	1354	0.22%	564240	0.48%	0	0.00%	pool-96-237-22-12.bstnma.east.verizon.net
30	1337	0.18%	1333	0.22%	391264	0.33%	7	0.03%	104.129.192.54
31	1245	0.17%	1245	0.20%	479	0.00%	5	0.02%	80.82.78.96
32	1227	0.17%	612	0.10%	675440	0.58%	32	0.13%	permafrost.ssec.wisc.edu
33	1161	0.16%	1161	0.19%	447	0.00%	4	0.02%	80.82.65.150
34	1091	0.15%	405	0.07%	8035	0.01%	204	0.80%	24-183-99-209.dhcp.mdsn.wi.charter.com
35	924	0.13%	924	0.15%	145	0.00%	109	0.43%	localhost
36	894	0.12%	610	0.10%	30289	0.03%	79	0.31%	122-62-98-181.jetstream.xtra.co.nz
37	881	0.12%	113	0.02%	7729	0.01%	758	2.97%	st-216-124-112-140.d64.org
38	837	0.12%	802	0.13%	533715	0.46%	8	0.03%	81.198.203.74
39	828	0.11%	811	0.13%	234078	0.20%	12	0.05%	129.137.208.80
40	827	0.11%	355	0.06%	195291	0.17%	9	0.04%	122-61-74-72.jetstream.xtra.co.nz
41	703	0.10%	660	0.11%	164655	0.14%	13	0.05%	75.77.22.66.nw.nuvox.net
42	692	0.10%	0	0.00%	3186	0.00%	0	0.00%	5ad13380.bb.sky.com
43	690	0.10%	580	0.09%	240548	0.21%	17	0.07%	host3.smn.gob.ar
44	682	0.09%	545	0.09%	5606	0.00%	23	0.09%	head.oat.ts.astro.it
45	650	0.09%	648	0.11%	242298	0.21%	6	0.02%	104.129.192.49
46	601	0.08%	599	0.10%	181939	0.16%	1	0.00%	static.118.27.76.144.clients.your-server.de
47	597	0.08%	567	0.09%	395559	0.34%	5	0.02%	91.105.26.14
48	594	0.08%	355	0.06%	9615	0.01%	6	0.02%	204.152.152.55
49	592	0.08%	486	0.08%	288553	0.25%	9	0.04%	pc141.seg32.nipr.ac.jp

95	287	0.04%	69	0.01%	17521	0.01%	8	0.03%	erebus.ssec.wisc.edu
96	265	0.04%	259	0.04%	10385	0.01%	1	0.00%	volleyball.ssec.wisc.edu
97	263	0.04%	262	0.04%	257003	0.22%	3	0.01%	128.148.231.12
98	263	0.04%	155	0.03%	1521	0.00%	29	0.11%	ti0177a400-2774.bb.online.no
99	261	0.04%	260	0.04%	43753	0.04%	0	0.00%	130.195.253.52
100	260	0.04%	46	0.01%	15229	0.01%	12	0.05%	pc151.seg32.nipr.ac.jp
View All Sites									

Top 10 of 10387 Total Sites By KBytes									
#	Hits		Files		KBytes		Visits		Hostname
1	20296	2.81%	18416	3.00%	6201224	5.30%	0	0.00%	lobbyowl.ssec.wisc.edu
2	17625	2.44%	17525	2.86%	5906634	5.05%	0	0.00%	tropopause.aos.wisc.edu
3	20020	2.77%	17256	2.81%	5817816	4.97%	0	0.00%	nebraska.ssec.wisc.edu
4	13805	1.91%	12725	2.07%	4274169	3.65%	0	0.00%	caveowl.ssec.wisc.edu
5	9024	1.25%	8224	1.34%	4145012	3.54%	149	0.58%	b110088.yse.yahoo.net
6	3971	0.55%	3968	0.65%	2617039	2.24%	0	0.00%	rajja.pair.com
7	1639	0.23%	757	0.12%	2186282	1.87%	186	0.73%	165.189.60.11
8	2215	0.31%	1814	0.30%	1760003	1.50%	352	1.38%	spider-100-43-85-25.yandex.com
9	19351	2.68%	19120	3.12%	1750340	1.50%	10	0.04%	static.88-198-180-41.clients.your-server.de
10	278344	38.49%	272048	44.35%	1535575	1.31%	1	0.00%	bslcene.nerc-bas.ac.uk

Top 30 of 1412 Total Referrers			
#	Hits		Referrer
1	511009	70.67%	- (Direct Request)
2	54121	7.48%	http://www.ssec.wisc.edu/owl-lobby/loop.html
3	35063	4.85%	http://amrc.ssec.wisc.edu/data/view-data.php
4	17625	2.44%	http://sysadm.aos.wisc.edu/~poker/owl-1443/loop.html
5	10040	1.39%	http://amrc.ssec.wisc.edu/data/
6	7948	1.10%	http://amrc.ssec.wisc.edu/aws/index.php
7	5905	0.82%	http://arctic.ssec.wisc.edu/data/view-data.php
8	5201	0.72%	nt
9	3741	0.52%	https://amrc.ssec.wisc.edu/data/view-data.php
10	3536	0.49%	http://amrc.ssec.wisc.edu/blog/
11	3087	0.43%	http://amrc.ssec.wisc.edu/
12	1609	0.22%	https://amrc.ssec.wisc.edu/repository
13	1269	0.18%	http://amrc.ssec.wisc.edu/aws/
14	1208	0.17%	https://amrc.ssec.wisc.edu/
15	1127	0.16%	http://amrc.ssec.wisc.edu/aws/station_list.php
16	1033	0.14%	http://uwamrc.ssec.wisc.edu/data/view-data.php
17	1006	0.14%	http://amrc.ssec.wisc.edu/style.css
18	999	0.14%	http://www.persicetometeo.com/public/artico_monitoring.htm
19	680	0.09%	http://www.google.com/url
20	670	0.09%	http://amrc.ssec.wisc.edu/meetings/meeting2015/index.shtml

21	654	0.09%	http://www.eldoradocountyweather.com/satellite/ssec/antarctica-composite-ir.html
22	646	0.09%	http://www.adventure-antarctica.de/
23	635	0.09%	https://www.google.com/
24	600	0.08%	https://amrc.ssec.wisc.edu/repository/entry/show
25	593	0.08%	http://www.astroflesz.pl/aktualnosci/newsy/306-jak-dlugo-trwa-lot-na-ksiezyc
26	592	0.08%	https://amrc.ssec.wisc.edu/data/
27	577	0.08%	https://amrc.ssec.wisc.edu/repository/metadata/list
28	570	0.08%	http://www.albrari.com/vb/showthread.php
29	552	0.08%	https://amrc.ssec.wisc.edu/repository/entry/show/AMRC+RAMADDA+Archive+Data+Repository
30	512	0.07%	http://ossfoundation.us/projects/environment/global-warming/myths/antarctica-is-cooling-gaining-ice

[View All Referrers](#)

Top 20 of 28 Total Search Strings

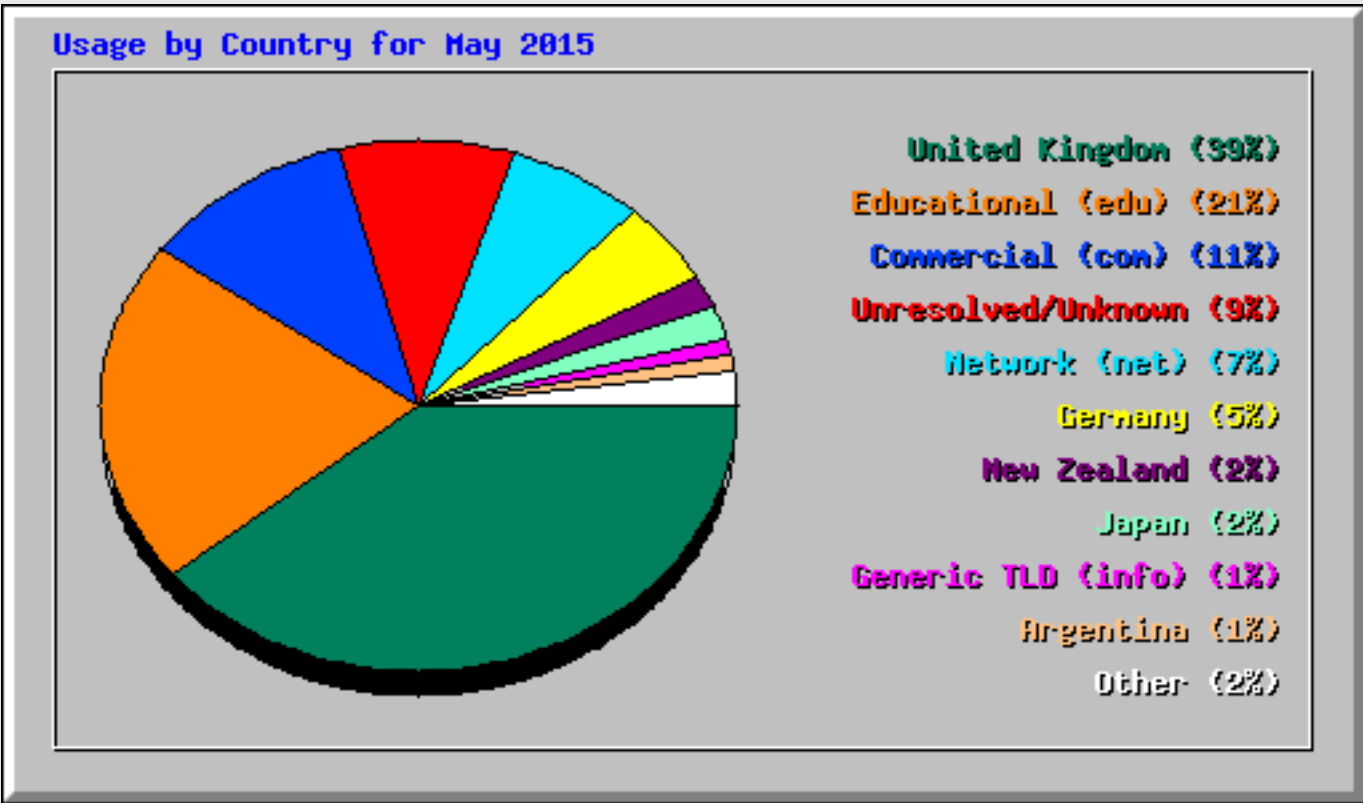
#	Hits		Search String
1	5	12.50%	2 guys 1 horse
2	5	12.50%	aws
3	2	5.00%	ago-1 aws
4	2	5.00%	amrc antarctica
5	2	5.00%	manuela inexpressible island aws
6	2	5.00%	santa claus island
7	1	2.50%	2015 anarctica meteorologists
8	1	2.50%	608-263-4207
9	1	2.50%	amrc uw madison
10	1	2.50%	antarctic meteorological research center
11	1	2.50%	antarctic weather stations map
12	1	2.50%	antarctica solar wisconsin university project
13	1	2.50%	arp xax
14	1	2.50%	automated weather station
15	1	2.50%	dome c 2
16	1	2.50%	ftp amrc
17	1	2.50%	history of mcmurdo station
18	1	2.50%	http://amrc.ssec.wisc.edu/aws/index.phpregion=west%20antarctica
19	1	2.50%	http://amrc.ssec.wisc.edu/blog/
20	1	2.50%	ice weather balloon

[View All Search Strings](#)

Top 50 of 507 Total User Agents

#	Hits		User Agent
1	290248	40.14%	Wget/1.11.4 Red Hat modified
2	174498	24.13%	Mozilla/5
3	58778	8.13%	Python-urllib/2.6
4	30958	4.28%	MegaIndex
5	21030	2.91%	Yahoo! Slurp

6	18409	2.55%	Googlebot/2
7	17304	2.39%	MSIE 7
8	9744	1.35%	bingbot/2
9	8219	1.14%	Baiduspider/2
10	5542	0.77%	Java/1.8.0_45
11	5201	0.72%	curl/7.19.7 (x86_64-redhat-linux-gnu) libcurl/7.19.7 NSS/3.16.2.3 Basic ECC zlib/1.2.8 libidn/1.18 libssh2/1.4.2
12	4688	0.65%	MSIE 9
13	4601	0.64%	MSIE 8
14	3971	0.55%	Wget/1.12 (freebsd8.1)
15	3873	0.54%	Mozilla/4
16	3563	0.49%	Googlebot-Image/1.0
17	3055	0.42%	Java/1.7.0_71
18	2804	0.39%	Mozilla/3.0 (compatible)
19	2416	0.33%	Windows NT 6
20	2306	0.32%	YandexBot/3
21	2138	0.30%	msnbot-media/1.1 (+http://search.msn.com/msnbot.htm)
22	1639	0.23%	Ultraseek
23	1443	0.20%	MSIE 10
24	949	0.13%	MSIE 6
25	917	0.13%	Apache/2.2.15 (CentOS) (internal dummy connection)
26	894	0.12%	AhrefsBot/5
27	765	0.11%	Apple-PubSub/65.28
28	748	0.10%	cis455mapreduce
29	564	0.08%	facebookexternalhit/1.1 (+http://www.facebook.com/externalhit_ua_text.php)
30	533	0.07%	Download Master
31	510	0.07%	Exabot/3
32	509	0.07%	UniversalFeedParser/5.1.5b +https://code.google.com/p/feedparser/
33	450	0.06%	Mozilla/4.0 (compatible;)
34	427	0.06%	SputnikImageBot/2
35	387	0.05%	CCBot/2.0 (http://commoncrawl.org/faq/)
36	340	0.05%	Linux x86_64
37	340	0.05%	TurnitinBot/3.0 (http://www.turnitin.com/robot/crawlerinfo.html)
38	331	0.05%	Java/1.6.0
39	329	0.05%	YandexImages/3
40	320	0.04%	+MSIE+6
41	310	0.04%	MSIE 5
42	290	0.04%	Opera 9
43	289	0.04%	SeznamBot/3
44	285	0.04%	Sogou web spider/4.0(+http://www.sogou.com/docs/help/webmasters.htm#07)
45	282	0.04%	Opera 8
46	251	0.03%	Mozilla"
47	244	0.03%	SputnikBot/2
48	244	0.03%	Twitterbot/1.0
49	188	0.03%	archive
50	187	0.03%	DotBot/1



Top 30 of 115 Total Countries

#	Hits		Files		KBytes		Country
1	279906	38.71%	273232	44.54%	1706704	1.46%	United Kingdom
2	151576	20.96%	131296	21.40%	24339506	20.79%	Educational (edu)
3	80738	11.16%	59651	9.72%	47071856	40.21%	Commercial (com)
4	62460	8.64%	43471	7.09%	17129656	14.63%	Unresolved/Unknown
5	51438	7.11%	44711	7.29%	12107824	10.34%	Network (net)
6	36934	5.11%	33540	5.47%	5962311	5.09%	Germany
7	13843	1.91%	3840	0.63%	1123712	0.96%	New Zealand
8	10999	1.52%	5396	0.88%	2334205	1.99%	Japan
9	5208	0.72%	5207	0.85%	1793	0.00%	Generic TLD (info)
10	4803	0.66%	3461	0.56%	692445	0.59%	Argentina
11	3767	0.52%	3408	0.56%	457242	0.39%	Italy
12	2114	0.29%	1957	0.32%	278748	0.24%	US Government (gov)
13	1948	0.27%	1678	0.27%	296731	0.25%	Australia
14	1501	0.21%	266	0.04%	61948	0.05%	Poland
15	1289	0.18%	403	0.07%	36928	0.03%	Non-Profit (org)
16	1287	0.18%	1195	0.19%	248245	0.21%	Netherlands
17	1140	0.16%	912	0.15%	319861	0.27%	Brazil
18	1090	0.15%	973	0.16%	165474	0.14%	France
19	1069	0.15%	837	0.14%	528264	0.45%	Russian Federation
20	916	0.13%	836	0.14%	172027	0.15%	Belgium
21	765	0.11%	719	0.12%	143191	0.12%	Spain
22	710	0.10%	649	0.11%	544234	0.46%	Ukraine
23	553	0.08%	505	0.08%	81163	0.07%	Finland
24	524	0.07%	472	0.08%	288572	0.25%	US Military (mil)
25	485	0.07%	380	0.06%	31451	0.03%	Canada

26	441	0.06%	274	0.04%	38830	0.03%	Kazakhstan
27	437	0.06%	287	0.05%	89740	0.08%	Turkey
28	367	0.05%	250	0.04%	25218	0.02%	Norway
29	365	0.05%	118	0.02%	69178	0.06%	Czech Republic
30	318	0.04%	290	0.05%	29028	0.02%	United States